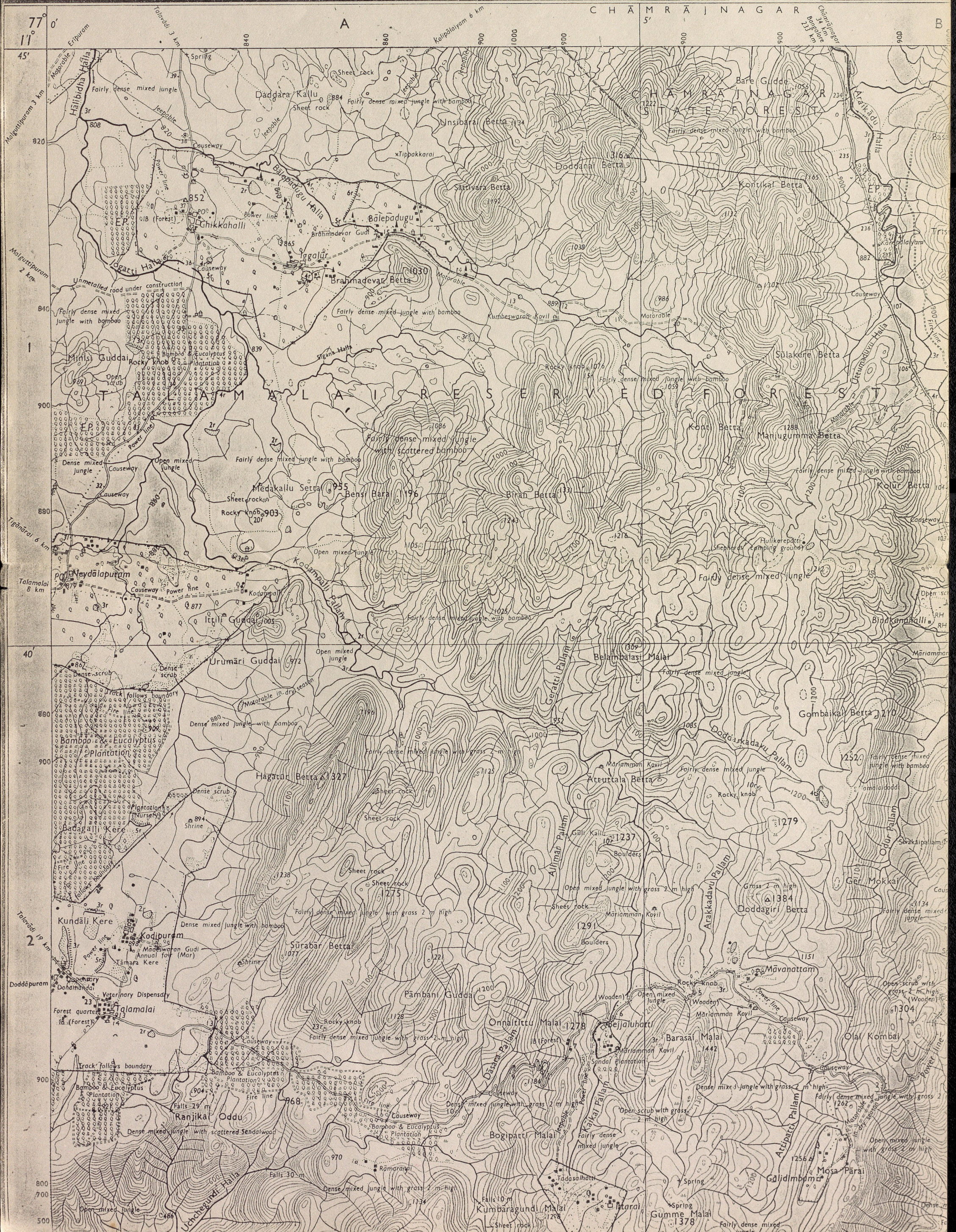


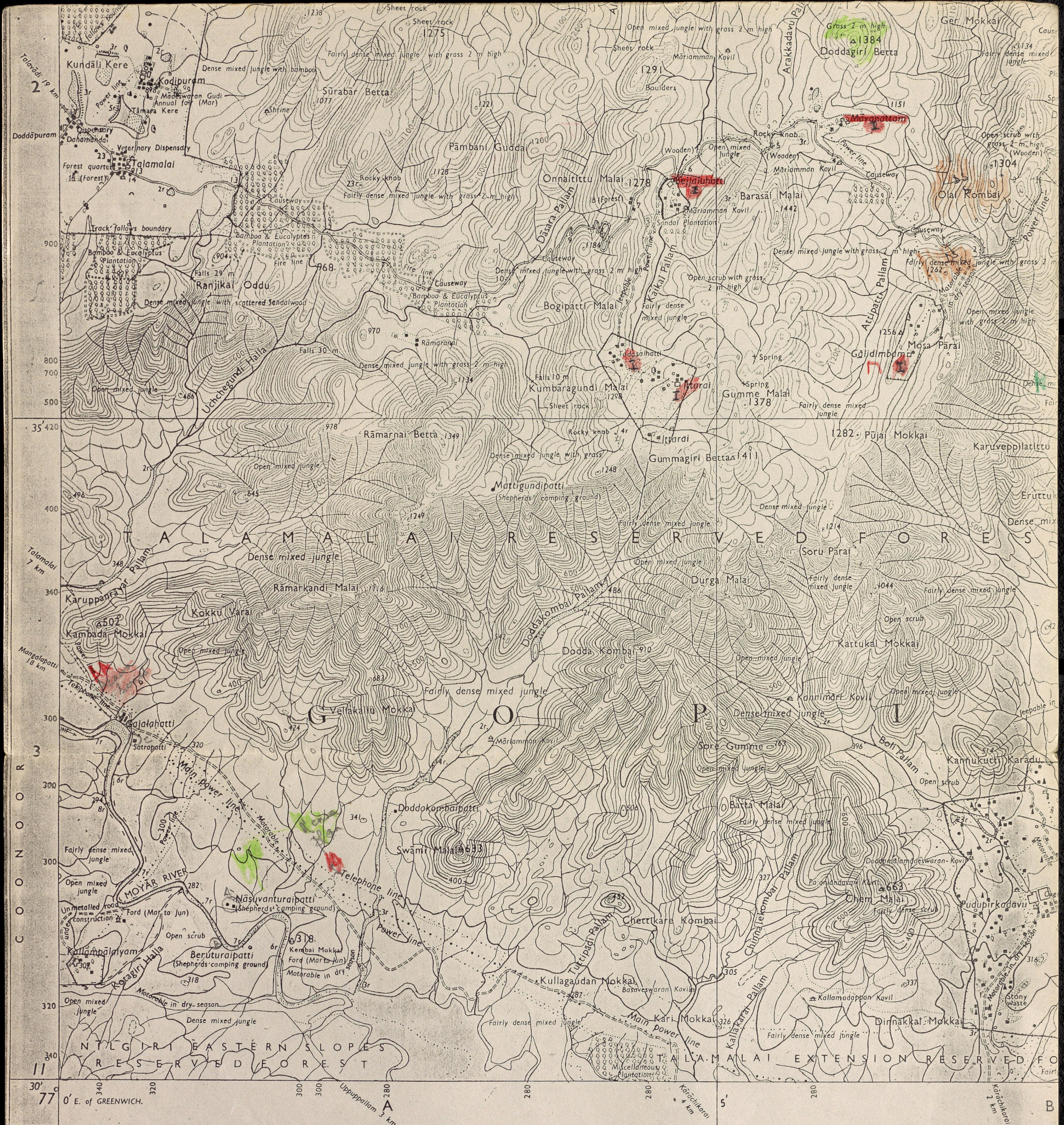
MYSORE DISTRICT.
COIMBATORE AND
NĪLGIRI DISTRICTS.

584/2

Surveyed 1971-72.
(Also see foot-note)

KARNĀTAKA,





REG. No. 4016-104 D 76 (D.O. 4-1-33,333)-1134 '77-2502 '79-5706 '84.

Roads, metalled: according to importance; distance stone	==	20
unmetalled: do. do. bridge	---	---
Cart-track, pack-track and pass. Foot-path with bridge
Bridges: with piers; without. Causeway. Ford or Ferry	==	==
Streams: with track in bed; undefined. Canal.	---	---
Dams: masonry or rock-filled earthwork. Weir.	---	---
River banks: shelving; steep. 3 to 6 metres; over 6 metres.	---	---
dry with water channel; with island & rocks. Tidal river.	---	---
Submerged rocks. Shoal. Swamp. Reeds.	---	---
Wells: lined; unlined. Tube-well. Spring. Tanks: perennial; dry.	---	---
Embankments: road or rail; tank. Broken ground.	---	---
Railways, broad gauge: double; single with station; under constr.	---	---
other gauges: do. do. with distance stone; do.	---	---
Light railway or tramway. Telegraph line. Cutting with tunnel.	---	---
Contours with sub-features. Rocky slopes. Cliffs.	---	---
Sand features: (1) flat; (2) sand-hills and dunes (surveyed); (3) shifting dunes.	---	---

Index to Sheets

58 A/13	58 E/1	58 E/5
58 A/14	58 E/2	58 E/6
58 A/15	58 E/3	58 E/7

58 E/2

Published under the direction of Major-General K.L. Khosla, B.Sc., B.E (Civil) 1976

500 m to 1 cm
Metres 1000 500 0 1 2 3
1:50,000

HEIGHTS & CONTOUR INTERVAL

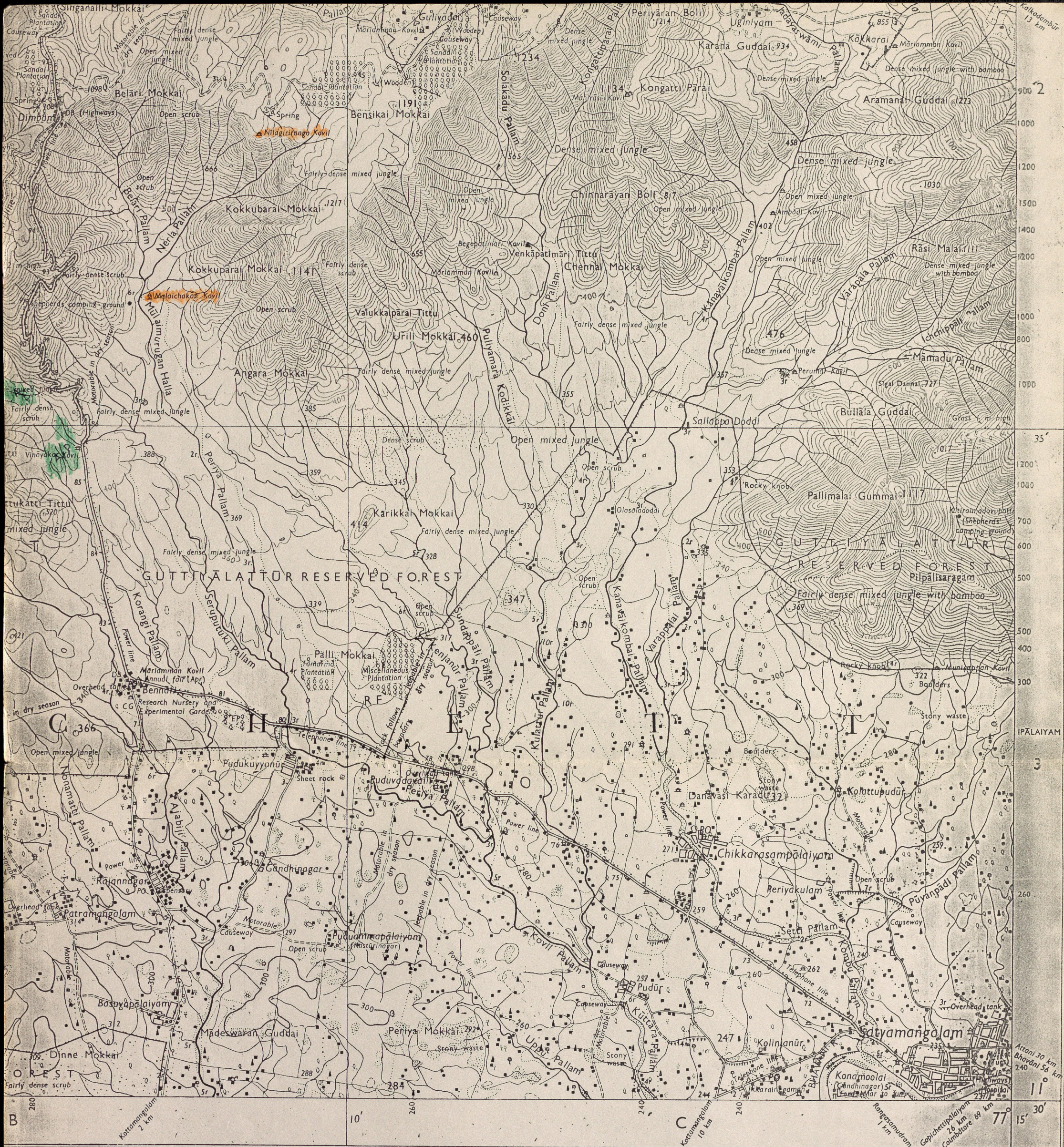
- *Water features are shown in blue where they generally contain water.
- *Cultivated areas are coloured yellow.
- The exterior boundaries of areas of Reserved or Protected Forests are shown by green ribands.
- *Not applicable

This sheet has been compiled from 1:25,000 survey. The kilometre scale numbers along roads are shown in slant type, e.g. Temples with one or more gopurams are shown thus Betelnut trees are shown thus

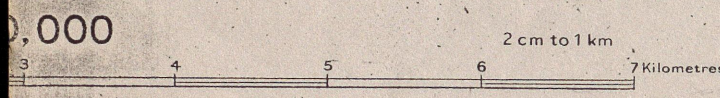
1st Edition 1976. (Previous Editions on 1-inch scale: 1st 1927; 2nd 1945).

REFER TO THIS MAP AS :- 1:50,000 SHEET 58 E/2 FIRST EDITION

REFEREN EP Eucalyptus P



Civil, F.I.S., F.I.E., F.I.G.U., M.A.S.C.E. (U.S.A.), Surveyor General of India, 1976.



Contours are approximate. A relative height, *sr*, represents the approximate height, in metres, between the top and bottom of a steep slope. Wooded areas are coloured green. Scattered trees and other vegetation are in green, but prominent surveyed trees are in black.

Applicable. e.g., '5' whereas milestone numbers are shown in upright type, e.g., '5'.

Administrative Index



1 MYSORE, KARNATAKA.
2 NILGIRI, TAMIL NADU.

58E/2

PRINTED AT THE 104 (HBD) PRINTING GROUP OF SURVEY OF INDIA.

Towns or Villages; inhabited; deserted. Fort	
Huts: permanent; temporary. Tower. Antiquities	
Temple. Chhatri. Church. Mosque. Idgah. Tomb. Graves	
Lighthouse. Lightship. Buoys: lighted; unlighted. Anchorage	
Mine. Vine on trellis. Grass. Scrub	
Palms: palmyra; other. Plantain. Conifer. Bamboo. Other trees	
Boundary, international	
state: demarcated; undemarcated	
district: subdivn; tahsil or taluk; forest	
Boundary pillars: surveyed; unlocated; village trijunction	
Heights: triangulated; station, point; approximate	
Bench-mark: geodetic; tertiary; canal	
Post office. Telegraph office. Combined office. Police station. PO	
Bungalows: dak or travellers; inspection. Rest-house	
Circuit house. Camping ground. Forest: reserved; protected	
Spaced names: administrative; locality or tribal	

GOVERNMENT OF INDIA COPYRIGHT, 1976.
Price: Five Rupees.

CENTRE FOR
ECOLOGICAL SCIENCES

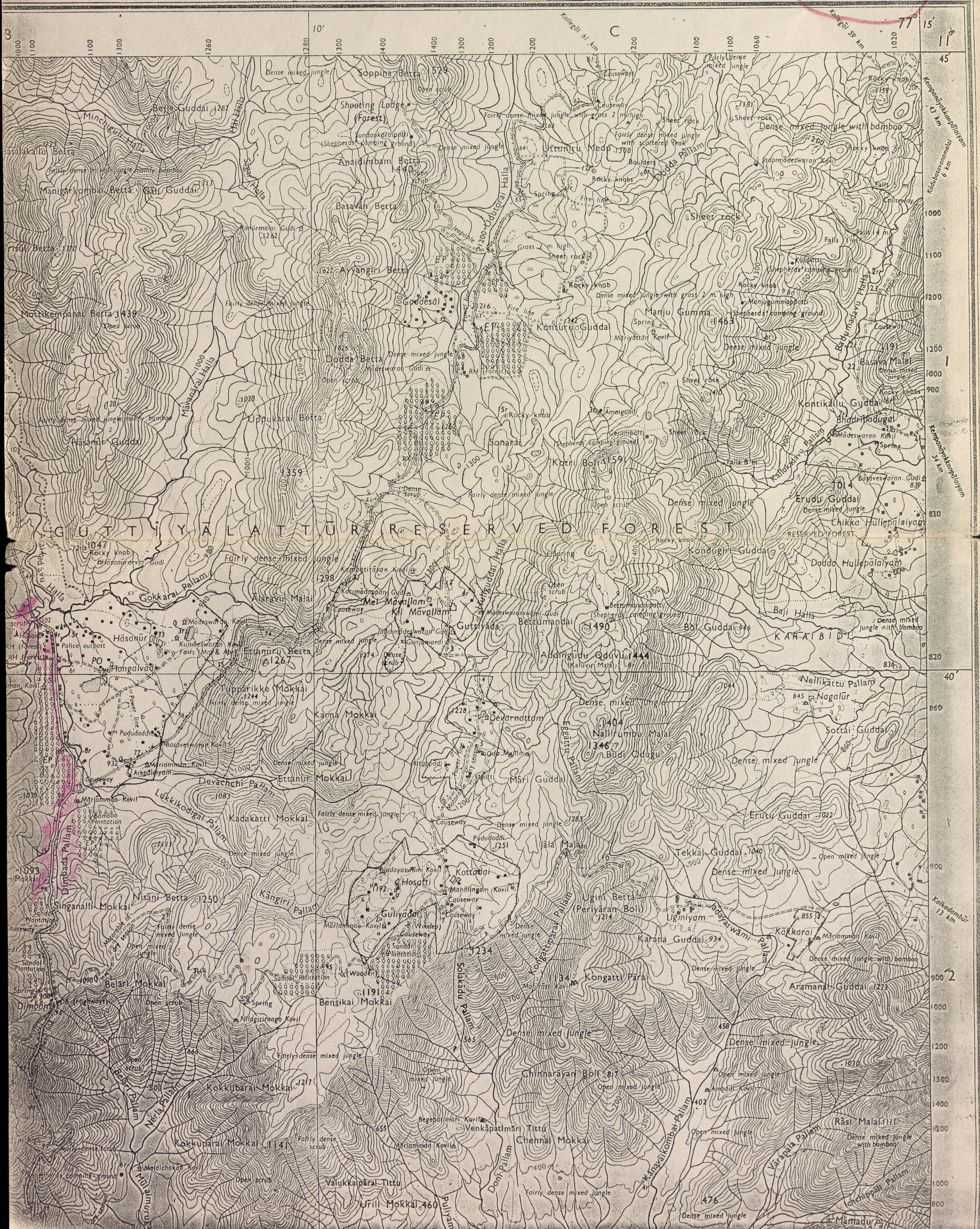
REFERENCE
ptus Plantation.

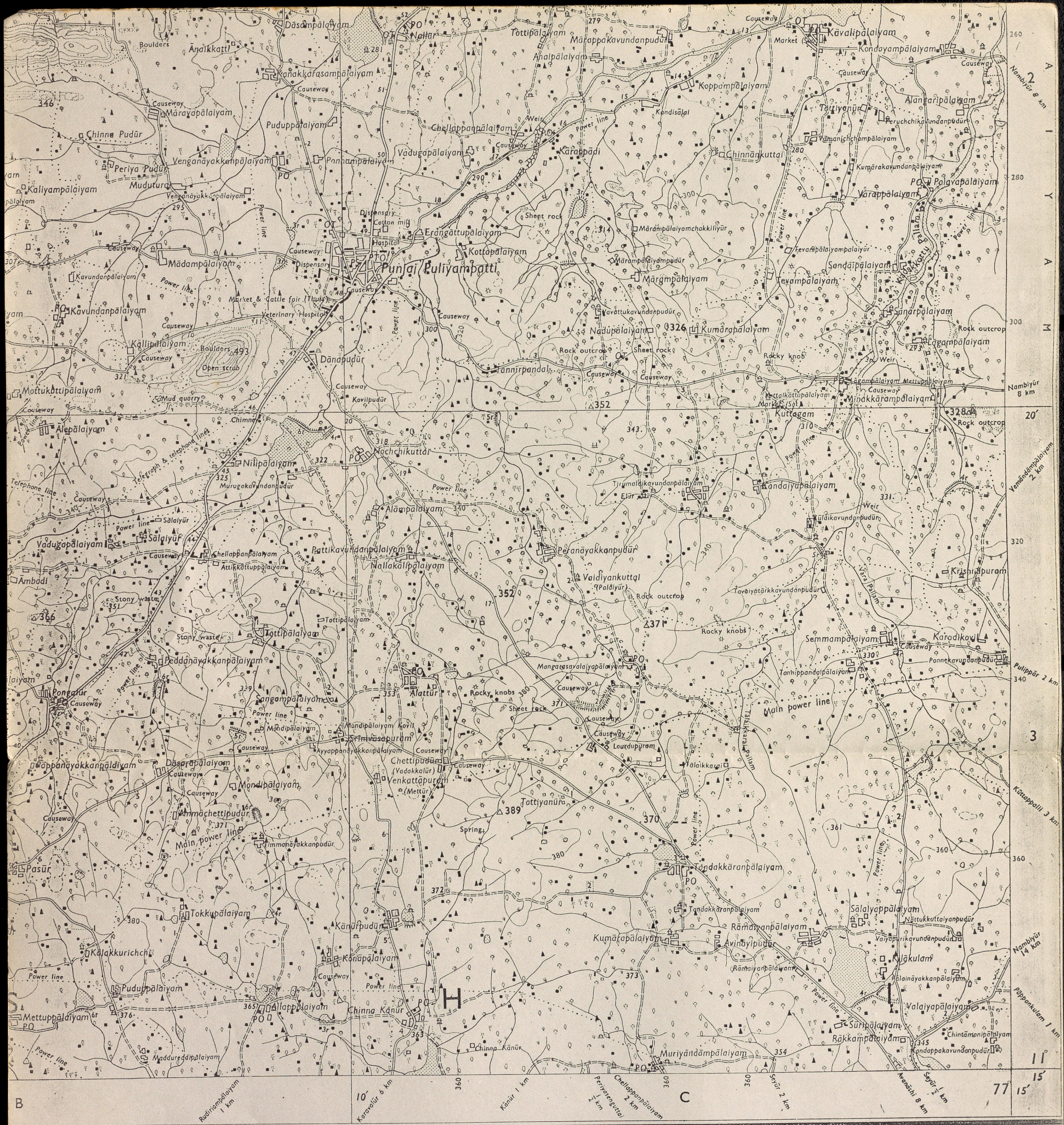
CENTRE FOR ECOLOGICAL SCIENCES
FIRST EDITION

TAMIL NĀDU

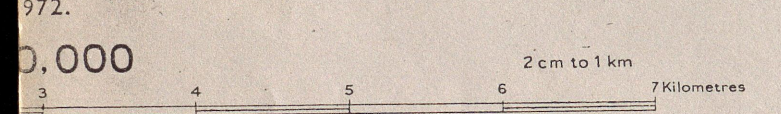
Magnetic Variation from True North about 2° West in 1970.
(Decreasing by about 1' annually).

No. 58 E/2



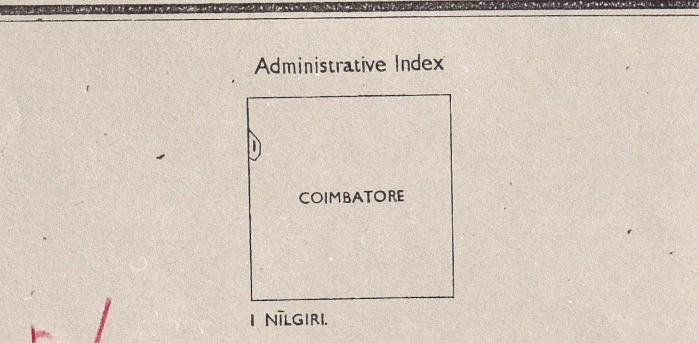


Surveyor General of India.



TOURS IN METRES
 INTERVAL 20 METRES

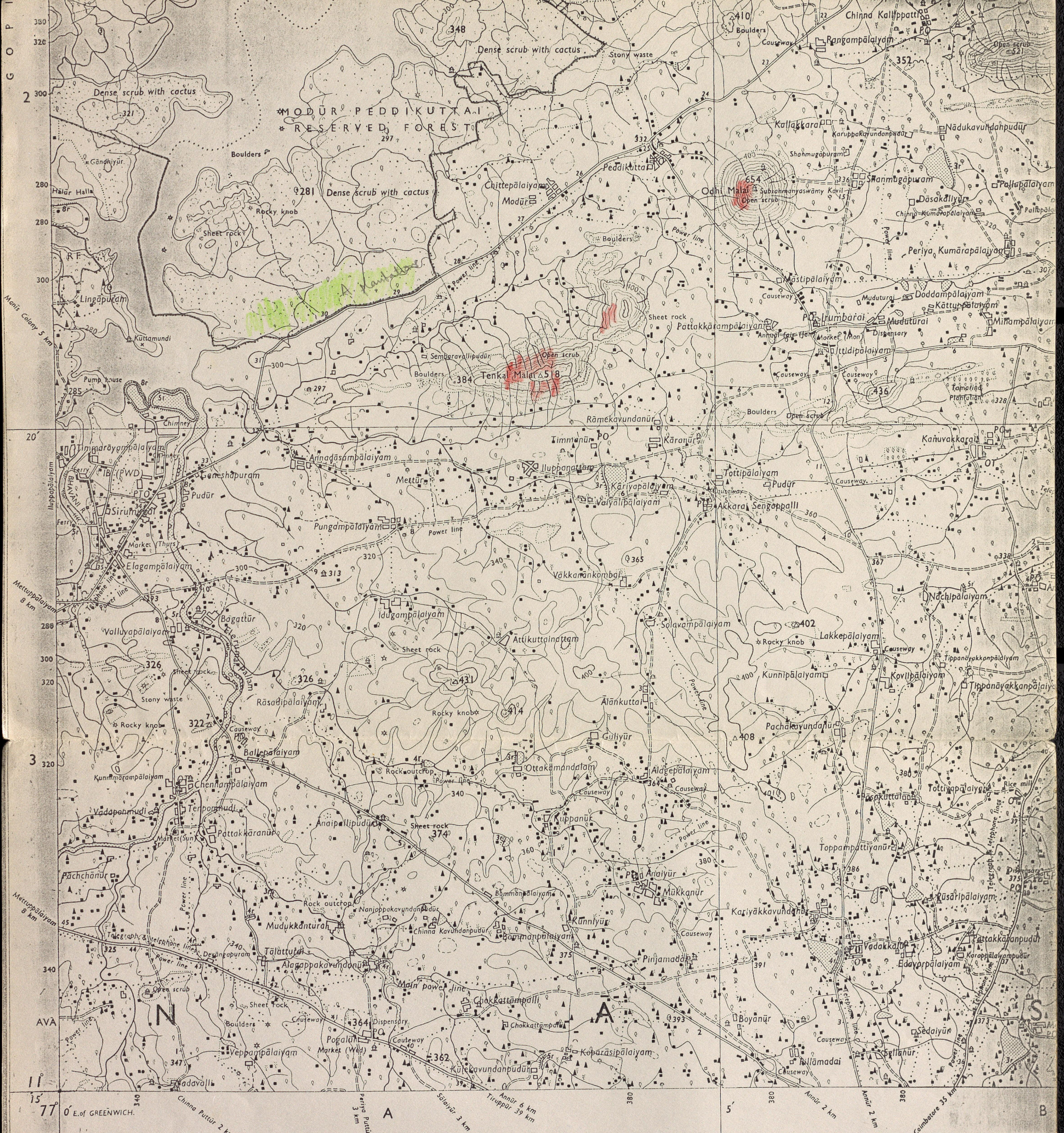
Contours are approximate.
 A relative height, *h*, represents the approximate height, in metres, between the top and bottom of a steep slope.
 Wooded areas are coloured green. Scattered trees and other vegetation are in green, but prominent surveyed trees are in black.



CENTRE FOR ECOLOGICAL SCIENCES

PRINTED AT THE 104 (HBD) PRINTING GROUP OF SURVEY OF INDIA.

Towns or Villages: inhabited; deserted; Fort			
Huts: permanent; temporary; Tower; Antiquities			
Temple; Chhatri; Church; Mosque; Idgah; Tomb; Graves			
Lighthouse; Lightship; Buoys: lighted; unlighted; Anchorage			
Mine; Vine on trellis; Grass; Scrub			
Palms: palmyra; other; Plantain; Conifer; Bamboo; Other trees			
Boundary: international			
state: demarcated; undemarcated			
district: subdivided; tahsil or taluk; forest			
Boundary pillars: surveyed; unlocated; village trijunction			
Heights: triangulated; station; point; approximate			
Bench-mark: geodetic; tertiary; canal			
Post office; Telegraph office; Combined office; Police station; PO; TO; PTO; PS			
Bungalows: dak or travellers; inspection; Rest-house			
Circuit house; Camping ground; Forest: reserved; protected			
Spaced names: administrative; locality or tribal			



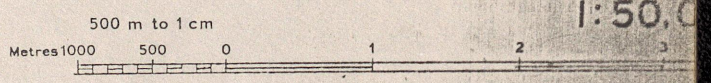
REG. No. 2032-104 D '84 (D.O. 4-1-33,333)-668 '77-3006 '78-6706.

Published under the direction of Dr. Hari Narain, M.S. 1972.

Roads, metalled: according to importance: distance stone	==	20
.. unmetalled: do. do. bridge	==	==
Cart-track. Pack-track and pass. Foot-path with bridge	---	---
Bridges: with piers: without. Causeway. Ford or Ferry	==	==
Streams: with track in bed: undefined. Canal	---	---
Dams: masonry or rock-filled: earthwork. Weir	---	---
River banks: shelving: steep. 3 to 6 metres: over 6 metres	---	---
dry with water channel: with island & rocks. Tidal river	---	---
Submerged rocks. Shoal. Swamp. Reeds	---	---
Wells: lined: unlined. Tube-well. Spring. Tanks: perennial: dry	---	---
Embankments: road or rail: tank. Broken ground	---	---
Railways: broad gauge: double: single with station: under constr.	---	---
other gauges: do. do. with distance stone: do.	---	---
Light railway or tramway. Telegraph line. Cutting with tunnel	---	---
Contours with sub-features. Rocky slopes. Cliffs	---	---
Sand features: (1) flat: (2) sand-hills and dunes (surveyed): (3) shifting dunes	---	---

Index to Sheets

58 A/14	58 E/2	58 E/6
58 A/15	58 E/3	58 E/7
58 A/16	58 E/4	58 E/8



HEIGHTS & CONTOUR INTERVAL

- Water features are shown in blue where they generally contain water.
- Cultivated areas are coloured yellow.
- The exterior boundaries of areas of Reserved or Protected Forests are shown by green ribands.

58 E/3

1st Edition 1972. (Previous Editions on 1-inch scale: 1st 1928; 2nd 1945; 3rd 1954).

REFER TO THIS MAP AS :- 1:50,000 SHEET 58 E/3 FIRST EDITION

This sheet has been compiled from 1:25,000 survey. Unmetalled roads and the cart-tracks against which there are no remarks on the kilometre stone numbers along roads and canals are shown in solid lines. A relative height e.g., 6r, marked along a canal indicates the height of the Tanks, shown dry in this area, usually contain water from October to February. Tobacco is one of the principal crops in this area. Wells are numerous throughout the sheet; some have been omitted.

NĀDU

Magnetic Variation from True North about $2\frac{3}{4}$ West in 1970.
(Decreasing by about 1 annually).

No. 58 $\frac{E}{3}$

