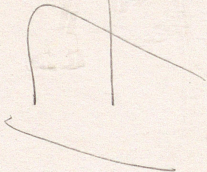


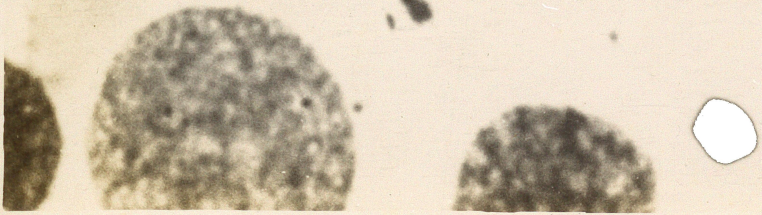
C 80

c. f. d. h.



2

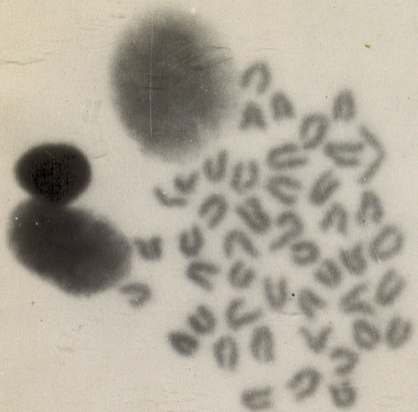
Handwritten text, possibly a list or notes, consisting of several lines of characters and symbols. The text is arranged in a roughly triangular shape, with the top line being the longest and the bottom line being the shortest. The characters are dark and somewhat irregular, suggesting they were written with a pen or marker on a light-colored surface. The text is difficult to decipher due to its cursive and somewhat illegible nature.



C²⁵

C. mal.





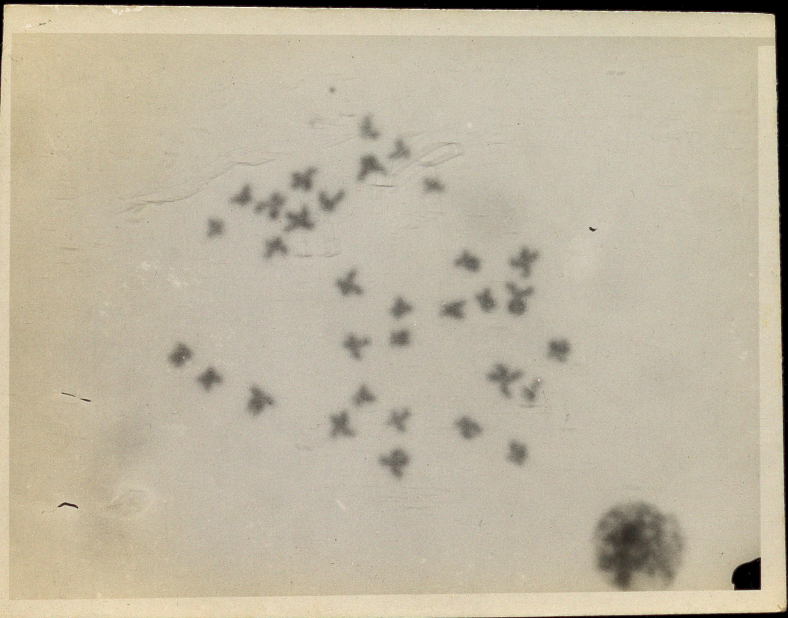
NG 1
CA 24.
21-5-79

20

15-7-79

UNIVERSITY OF CALIFORNIA
LIBRARY
DURHAM

23 (15-7-79)



RG12

21-8-79

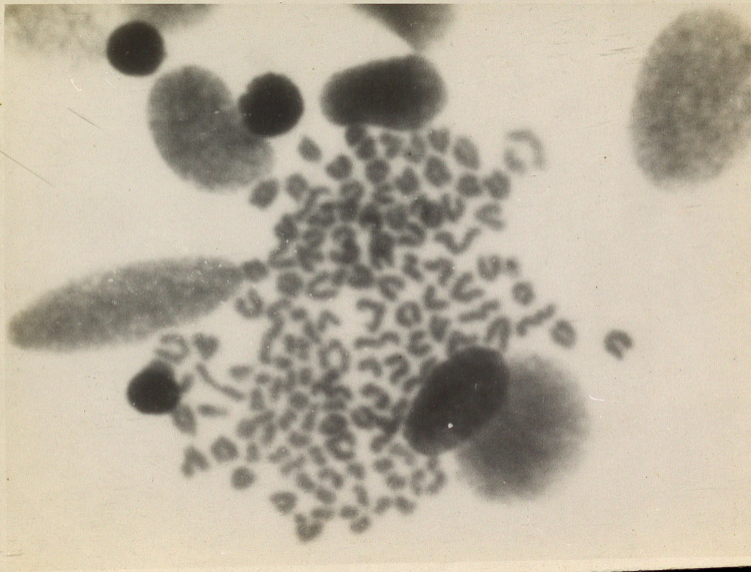
channel = 32

22

30-9-79 2

1-10-79

64



Polybleidy

?

^x
Slip over lead
- like this



26

27-4-80

Quarlin

Handwritten text, possibly a list or notes, arranged in a circular or spiral pattern. The text is extremely faint and difficult to decipher, but appears to contain several lines of characters.

RAS (2)

60-1-4-80

(26) - 27. camel.

27-4-80

Quarter

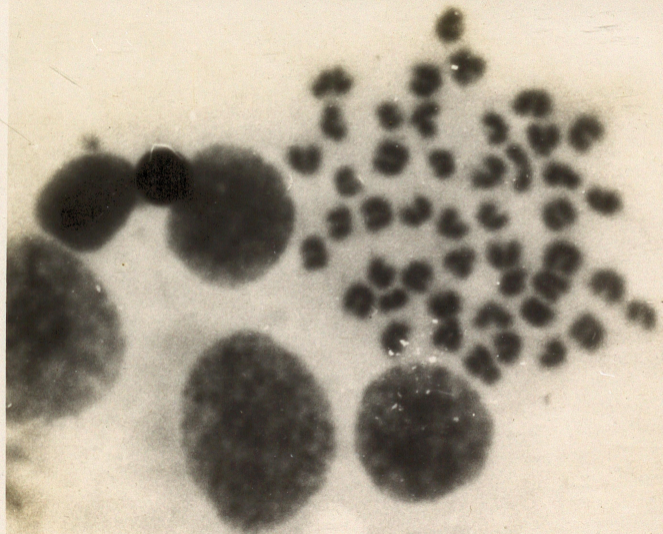
Handwritten text, possibly a signature or name, written in a cursive or stylized script. The text is dark and appears to be written on a light-colored background. The characters are somewhat obscured by the texture of the paper and the lighting, but the overall shape suggests a name or a set of initials.

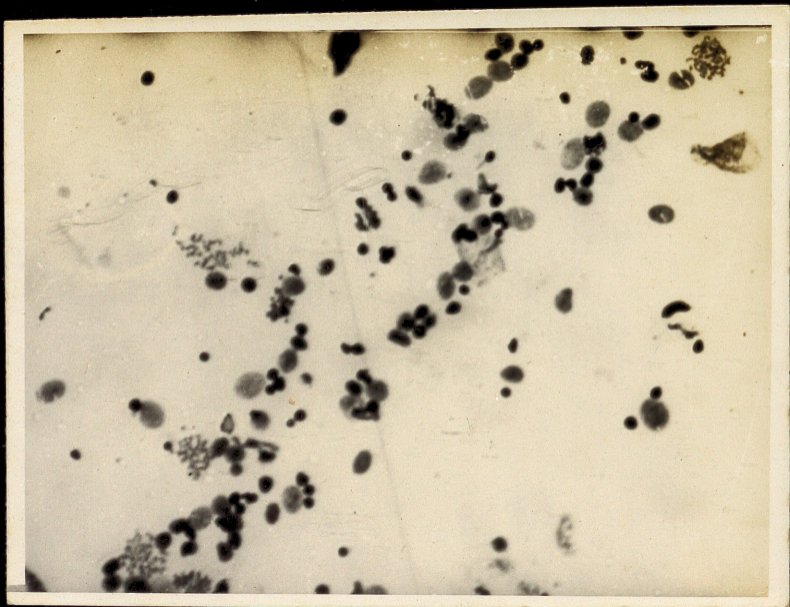
S61 2

16-8-79

(30)

1-10-79





Se. 25'

2, 18-4-80

to show the spread

18

11-5-80

Handwritten text, possibly a signature or name, written in a cursive or stylized script. The text is difficult to decipher due to the image quality and orientation. It appears to be written in a circular or semi-circular pattern.



(21)

22-10-79

C124

my

my

Handwritten text, possibly a signature or name, written in a cursive or stylized script. The text is oriented vertically and appears to be written on a light-colored surface. The characters are dark and somewhat blurred, making them difficult to decipher. The text is arranged in several vertical columns, with some characters appearing to be connected or overlapping. The overall appearance is that of a handwritten note or signature, possibly in a historical or archival context.

Hg. 56

19, 29-10-77

~~chrome~~ paper

(25)

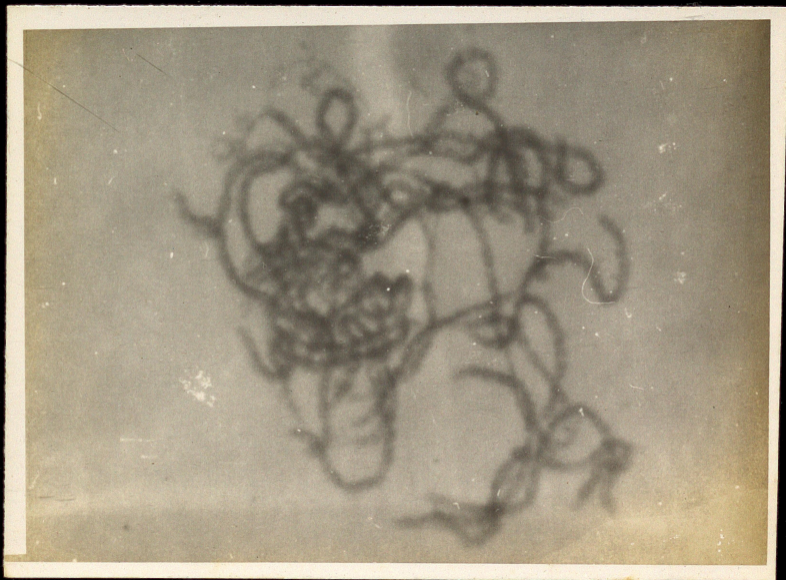
double exposed
strip

Handwritten text, possibly a signature or name, written in a circular or spiral pattern. The characters are difficult to decipher due to the cursive style and the circular arrangement. The text appears to be written in dark ink on a light-colored background.

(3) Karyotype analysis

15-7-79

(22)



CS: 2 1

7-2-80

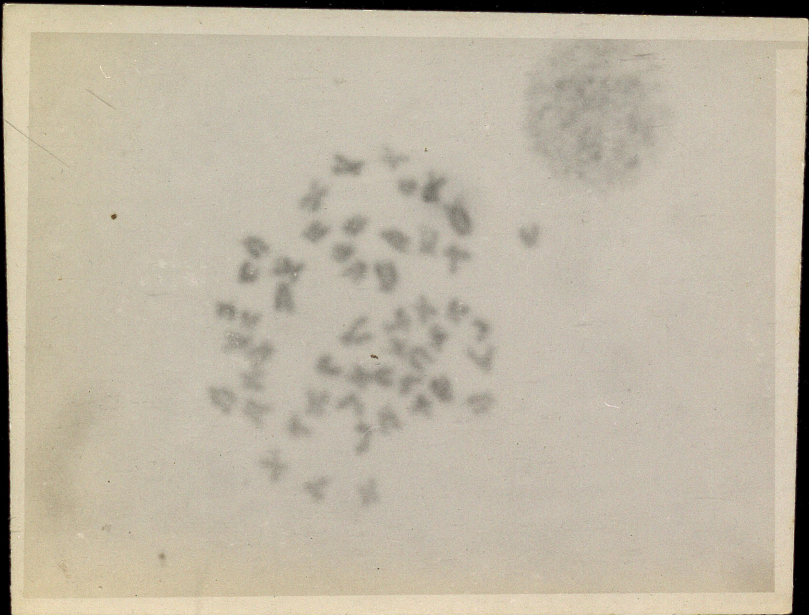
T

Paelyhin)

(18)

19 camel -

5-4-80



U.671

5-9-79

= 50

23

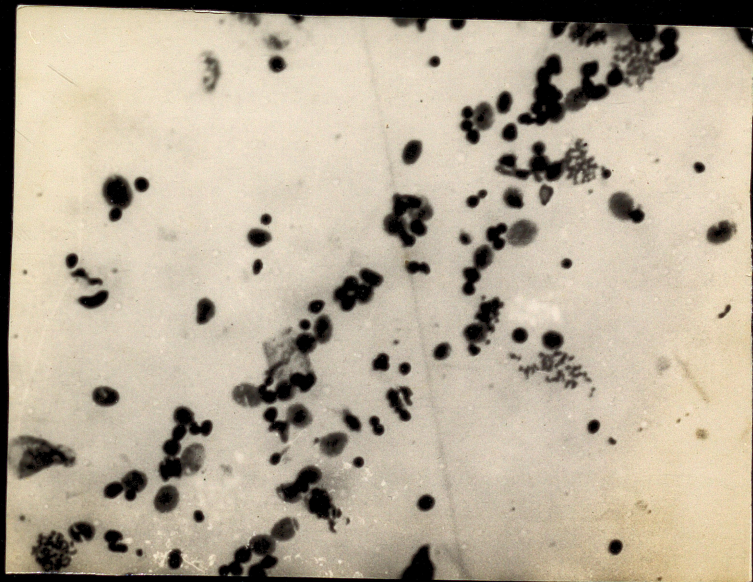
1-10-79

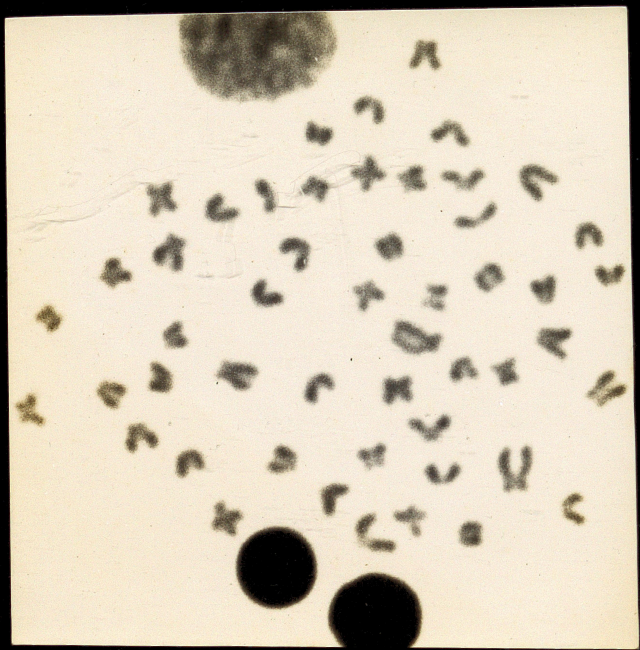
THE
MUSEUM
OF
THE
CITY
OF
NEW
YORK

18

15-7-79

19

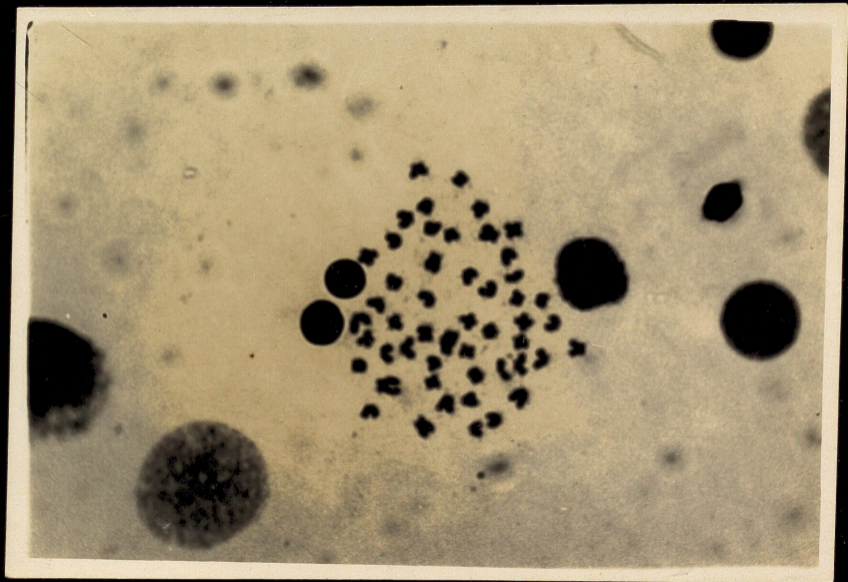




50



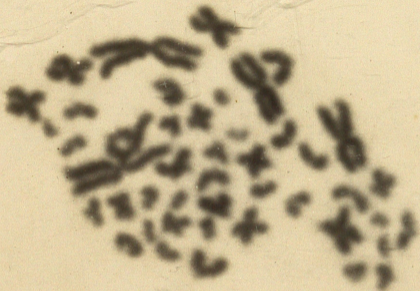
c



33

15.7.79

half



SG 1

11-7-79

33

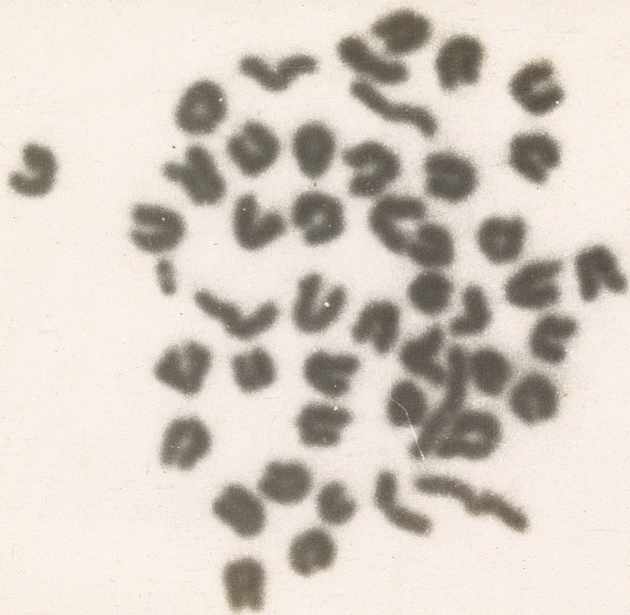
15-7-79

500 fish
14 brained + 32 unbrained

= 60

1/2 size

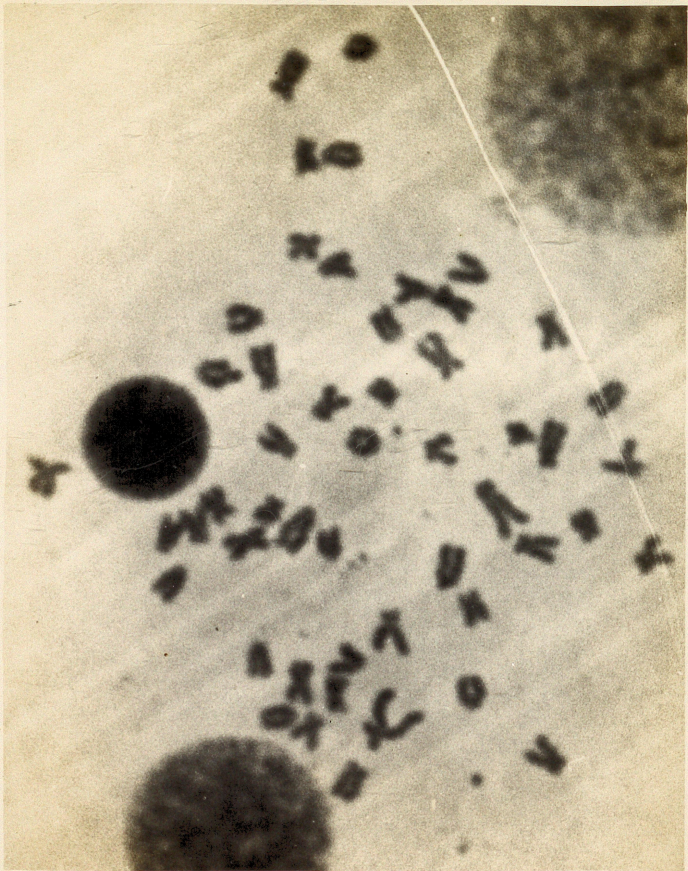
Klopp



Handwritten text, possibly a list or code, consisting of numerous small, dark, illegible characters arranged in a roughly circular pattern.

Handwritten mark or character, possibly a checkmark or a specific symbol.

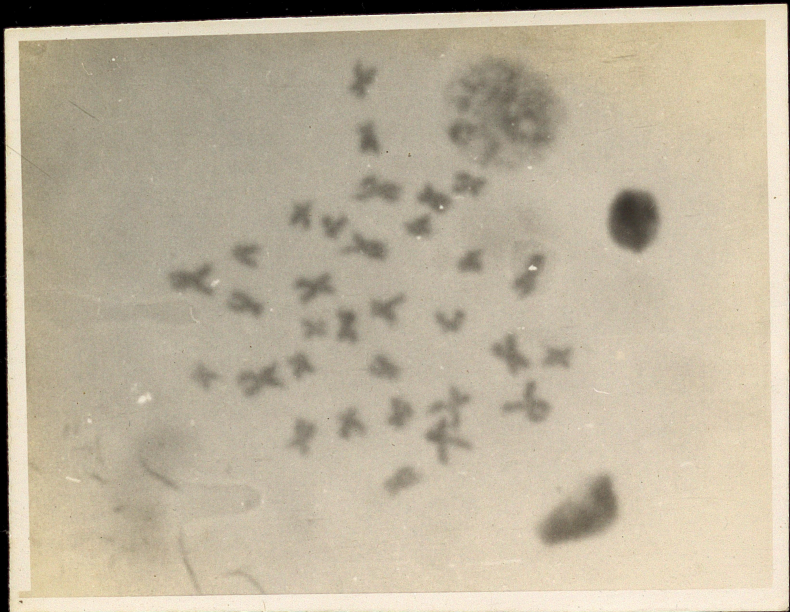




50

LD

c



Rks

21-8-79

(18)

1-10-79

32

Chamun