

TRINITY COLLEGE,
CAMBRIDGE.

March 16

Dear Hyengar,

I am sorry, but neither
Ms is altogether suitable for publication.

In the D.A. one goes on in detail
what is in fact the general principle of
London; in the other there is not, I fear,
the necessary combination of novelty & interest.

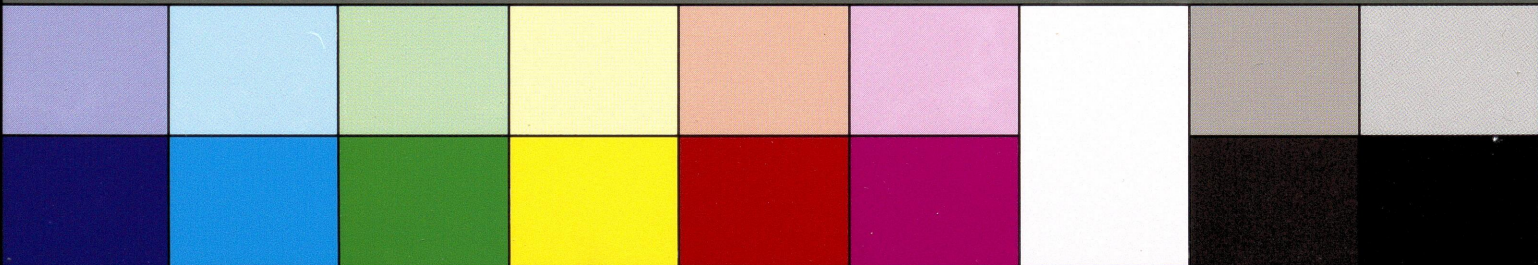
Inches 1 2 3 4 5 6 7 8

Centimetres

TIFFEN Color Control Patches

© The Tiffen Company, 2007

Blue Cyan Green Yellow Red Magenta White 3/Color Black



I may say, however, that your work impresses me
as quite promising, & ~~seems~~ it shows genuine
ability, somewhat undisciplined.

It is difficult to advise subjects for research by
letter, especially if you are handicapped by inadequate
libraries. I fear that you made research difficult
by going straight off to India.

In investigating many dimensional problems
- series or what not - the interesting things are the
which are those where the correspondence
with the 1-dim! problem is not straight forward.

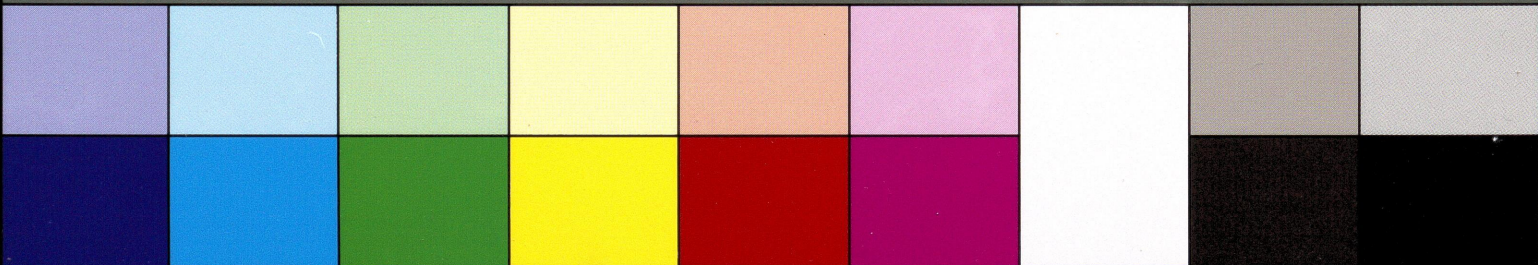
Inches 1 2 3 4 5 6 7 8

Centimetres

TIFFEN Color Control Patches

© The Tiffen Company, 2007

Blue Cyan Green Yellow Red Magenta White 3/Color Black





Prof. B. S. Madhava Rao,
Mathematics Dept.,
College of Engineering

Mysore University

BANGALORE

INDIA

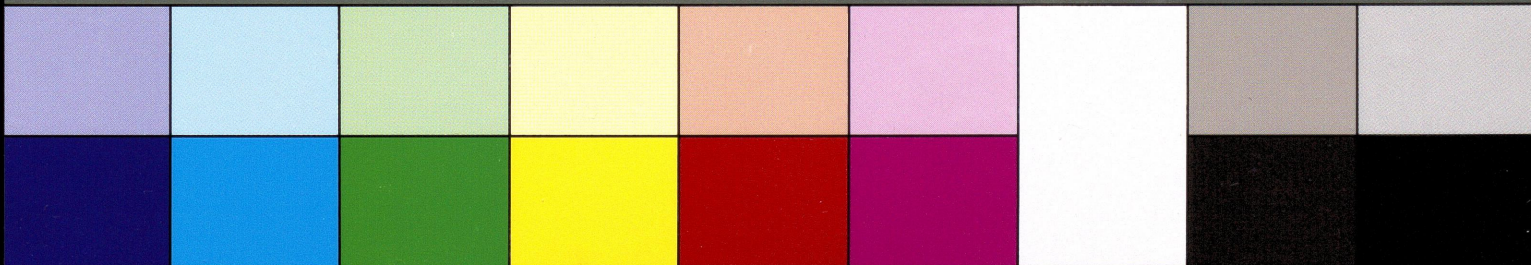
Inches 1 2 3 4 5 6 7 8

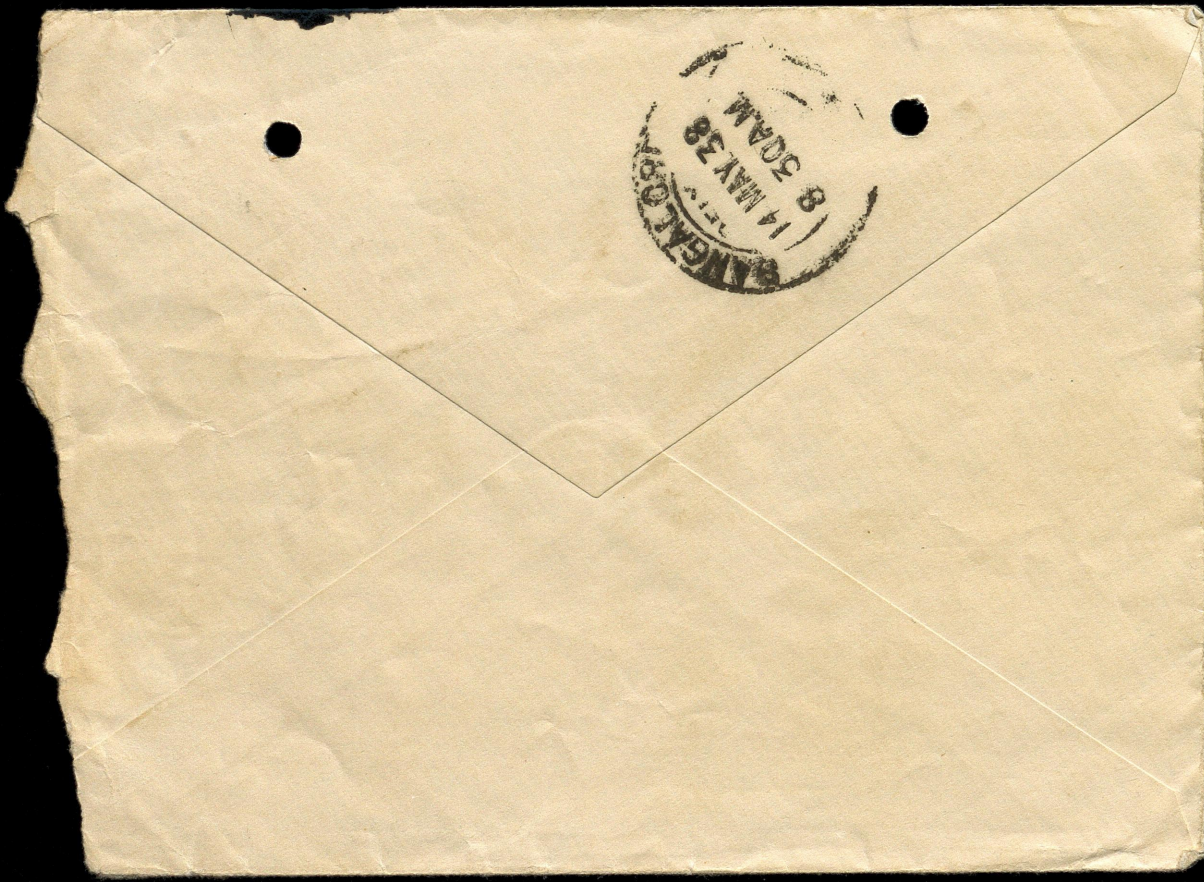
Centimetres 1 2 3 4 5 6 7 8 9 10 11 12 13 14 15 16 17 18 19

TIFFEN Color Control Patches

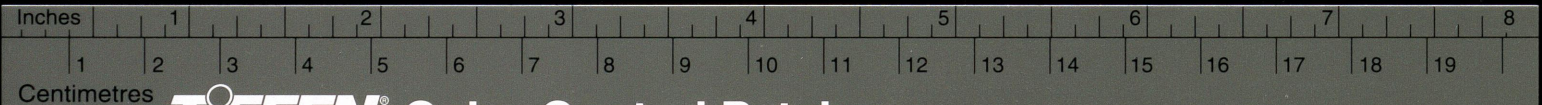
© The Tiffen Company, 2007

Blue Cyan Green Yellow Red Magenta White 3/Color Black





BANGALORE
14 MAY 38
8 30 AM



TIFFEN Color Control Patches

© The Tiffen Company, 2007

Blue	Cyan	Green	Yellow	Red	Magenta	White	3/Color	Black