



Watch out for those you love

punetreewatch@yahoo.com

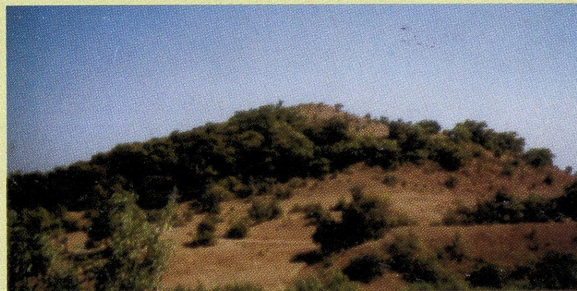
www.punetreewatch.org



lizards, 25 frogs and 600 fish! This has helped in recommending higher priority for conserving forests with more or unique diversity such as Bhamragad from Vidarbha, which is recently declared as a wildlife sanctuary by the State Forest Department. The database was recently included, by consulting over 50 experts, into the Maharashtra Biodiversity Strategy and Action Plan (MBSAP), for the Western Ghats sector, for the State Government & NGOs, keeping ongoing 10th Plan process in mind (www.ranwa.org/nbsap).

PEOPLE'S BIODIVERSITY REGISTER

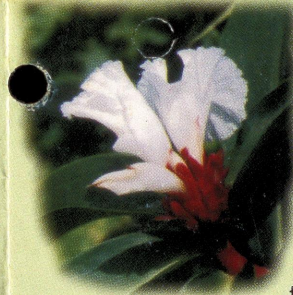
RANWA has pioneered **documentation of folk knowledge and practices of conservation of biodiversity**. Such People's Biodiversity Registers (PBR) have now become popular all over the country, as tool to stake people's claim of prior knowledge for sharing benefits from its commercial use protected through Intellectual Property Rights (IPRs). RANWA is currently helping National Innovations Foundation (NIF) in registration of



Outstanding traditional knowledge for recognising and rewarding individuals (www.nifindia.org), so that they and their villages feel encouraged to continue the eco-friendly traditions.

SACRED GROVES : GOD'S OWN FOREST

Tradition of conserving sacred groves i.e. forests **believed to be abode of deities** is common across villages throughout India in hilly & tribal regions. **Protected from harvests or destruction**, these Sacred groves often host the **oldest, largest, rarest trees** from an area as well as **many rare birds and mammals**. However, fading religious taboos & increasing timber and fuelwood demand has destroyed many and degraded most groves in recent decades. RANWA has **documented deity, area, location, biodiversity and conservation strategy** for hundreds of sacred groves in India with focus on



Western Ghats. RANWA is enhancing awareness amongst society and government about **ecosystem & social services** such as watershed provided by these community conserved areas (CCAs). This lays the foundation for conserving these groves through **awareness and government recognition as biological heritage sites**, rather than overemphasis on Protected Areas (PA) such as Wild Life Sanctuaries (WLS), National Parks (NP) and Biosphere Reserves (BR) so far.

REACHING OUT

Like seeds of a tree, RANWA's student founders are now helping **nature study and conservation through other organisations** such as Rural Communes, Pune; Kalpavriksha, Pune; Indian Institute of Sciences (IISc), Bangalore; Foundation for Revitalisation of Local Health Traditions (FRLHT), Bangalore; Bombay Natural History Society (BNHS), Mumbai; Oxford Forestry Institute, Oxford etc. To encourage fresh students to observe and study nature, RANWA offered **scholarships**. Besides documentation of plants and animals around Pune, this has also generated a database of district level distribution of 250 fish species across the Western Ghats. Some have been benefitted by social exposure through visiting reputed institutions across the country

ACTIVITIES

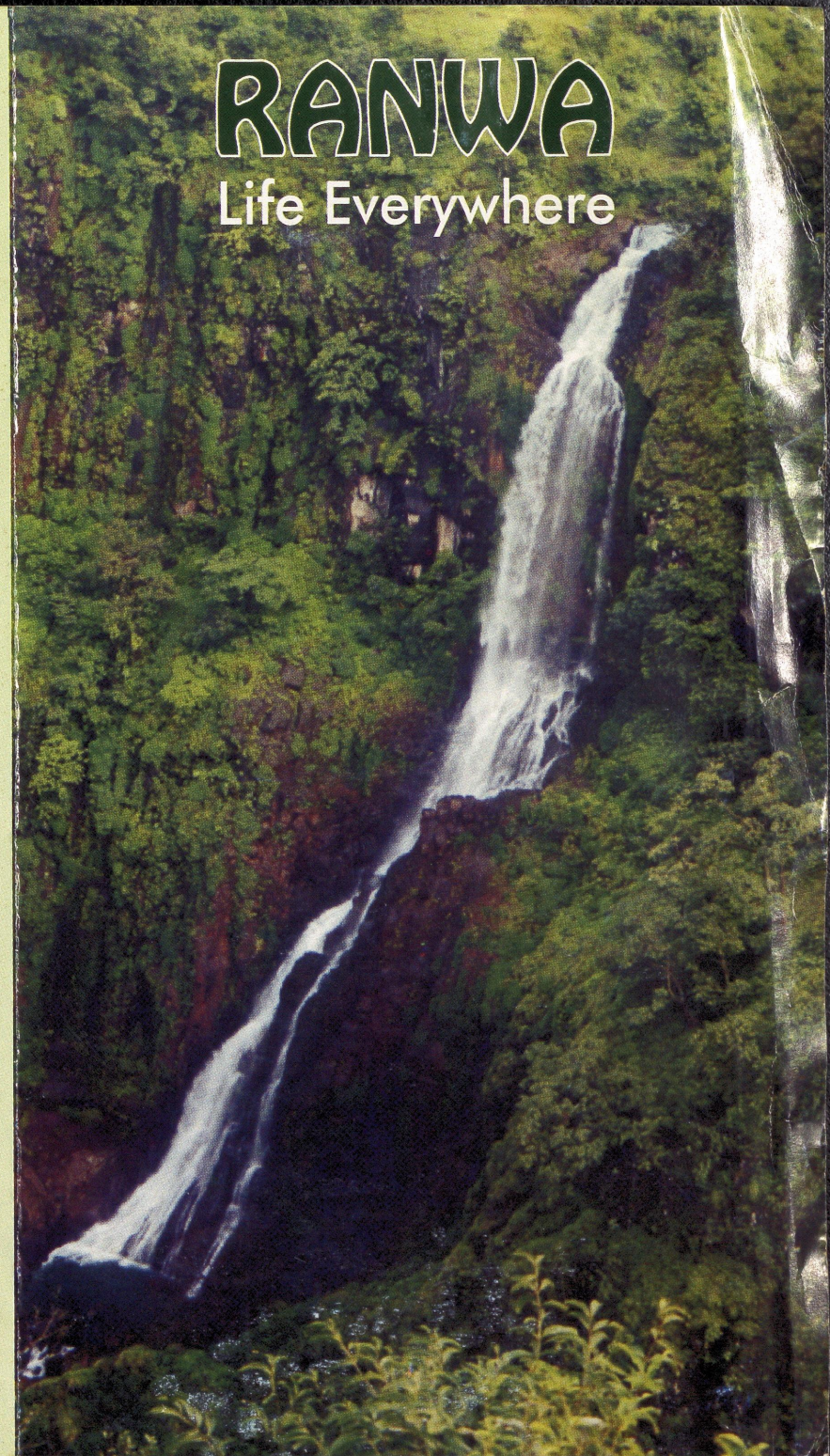
-  Biodiversity Assessment
-  Environmental Impact Assessment
-  Environmental Education & Training
-  Wildlife Census
-  Urban Wildlife Surveys
-  Eco Mapping
-  Butterfly Gardens
-  Medicinal Plant Gardens

RANWA

(Research and Action in Natural Wealth Administration)
C-26/1, Ketan Heights, Kothrud,
Pune, 411 038. Maharashtra, India.
TeleFax : 91- 20- 544 65 18
Email: ranwa@pn3.vsnl.net.in, ranwa@yahoogroups.com

www.ranwa.org

Ornate Comm. 020 5446518



WILDERNESS THY SPIRIT

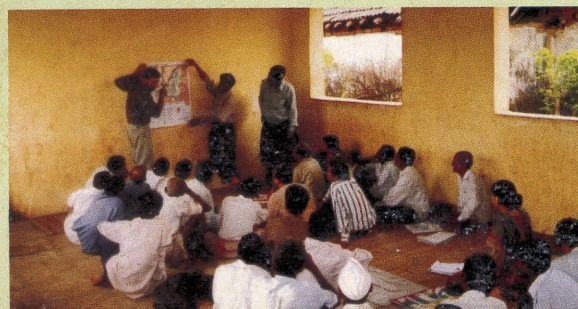
RANWA (Research and Action in Natural Wealth Administration) is an NGO working in the field of Biodiversity Conservation and Environmental Awareness. RANWA is registered as a Public Charitable Trust at Pune. RANWA means wilderness in vernacular! Its objectives include nature, Environmental research, education and activism everywhere, primarily through college students.

RANWA members include people from various walks of life. Members or invited experts such as Prof. S. D. Mahajan, Prof. R. V. Gandhe, Prof. Sanjeev Nalawade etc. share their experience of nature trails, interesting information regarding environmental issues through chats, slide-shows, games etc. at 'Katta' i.e. fortnightly informal gatherings. These gatherings also help in planning & reviewing activities. RANWA office maintains a small nature library. Funds are raised mainly from research grants and donations.

RANWA activities include week-end nature education trails around city hills, gardens & lakes, as well as talks and programs for both general nature lovers and students. These activities highlight beauty and variety of plants,



birds and butterflies as well as ways to study & conserve them, beginning from your home garden. **Research projects** document plants, animals as well as destructive and constructive human activities especially in Western Ghats. Actions promote plantation of local plants species as well as support environmental campaigns.

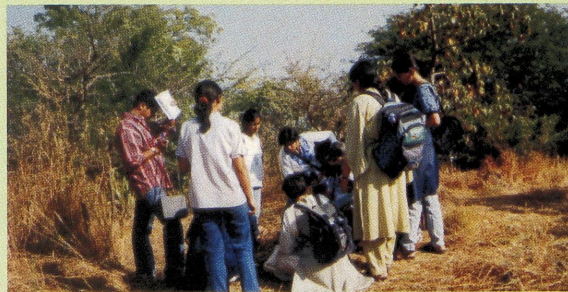


MILLENNIUM ECOSYSTEM ASSESSMENT - Global program for capacity building.

RANWA in collaboration with ATREE (Ashoka Trust for Research in Ecology and Environment), is selected as a candidate along with ATREE for the assessment of Indian biodiversity hotspots. RANWA is collaborating the assessment for the Northern Western Ghats sector with focus on Urban Ecosystem.

URBAN ECOSYSTEM PLANNING

RANWA has compiled, for the first time in South Asia, an urban directory of plants and animals. Published by Ecological Society, this directory tells you whom to find where, when and how much about 300 trees, 400 birds, 100 butterflies and even mushrooms, snails and ants, besides mammals around Pune City. The directory also alarms at their declining

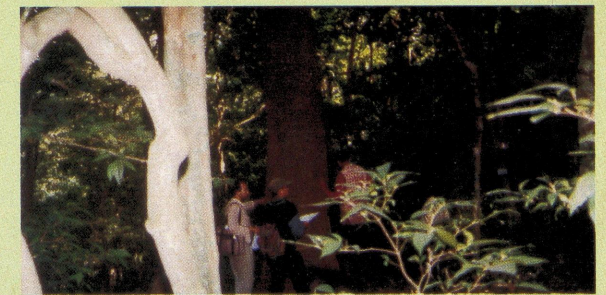


Abundance and diversity due to human impacts. It also suggests corresponding conservation localities and measures, (www.ranwa.org/punealive). Indian Institute of Sciences (IISc) and ATREE, based at Bangalore provided grants to project these lessons globally at the International Conference of Association of Tropical Biology (ATB) at Bangalore in 2001 (www.ranwa.org/atb). International Union for Conservation of Nature & Natural resources (IUCN) has publicised it to global policymakers through its Parks magazine. United Nations Development Programme (UNDP) is encouraging, sharpening and broadcasting this theme through its Small Grant Program of Global Environment Facility (GEF) through Centre for Environment Education (CEE). This extension to Pune-Mumbai belt aims at converting the directory into an ecosystem management blueprint to minimise destruction from and life to urbanisation, especially at Khandala & Pune. This includes, for instance, ongoing research in management planning for Pashan lake or gardens and avenue plantations, river pollution and mosquito control.



FOREST AND WILDLIFE MONITORING

RANWA is monitoring wealth of trees, birds, butterflies, frogs etc. at Bhimashankar, Mahabaleshwar, Phansad & Koyna along marked forest plots and transects with the support of the State Forest Department for the



last 5-6 years. These studies, co-sponsored by IISc, have revealed that notwithstanding the past forest degradation across the country, enhanced forest protection during the last few decades have lead to almost doubling of forest biomass here. However, forests near tourist spots lack regeneration, due to heavy firewood extraction; unlike modest harvests by villagers. These results were appreciated at the International Forest Dynamics Conference at Washington organised by Smithsonian Institution in 1995. These plots are now yielding insights into their carbon absorption potential amidst regional urbanisation. We also intend to publish handy field guides to promote many more naturalists to identify, study & conserve these forests and their amazing creatures!

MAHARASHTRA BIODIVERSITY ATLAS

RANWA reports depict geographical & habitat type distribution of nearly 600 trees, shrubs & climbers of the state, particularly in Vidarbha and Western Ghats, based on study visits and literature survey, co-sponsored by WWF-India and MaxMueller Bhavan (Goethe Institute). Similar compilation also exists for about 100 mammals, 500 birds, 100 snakes &

