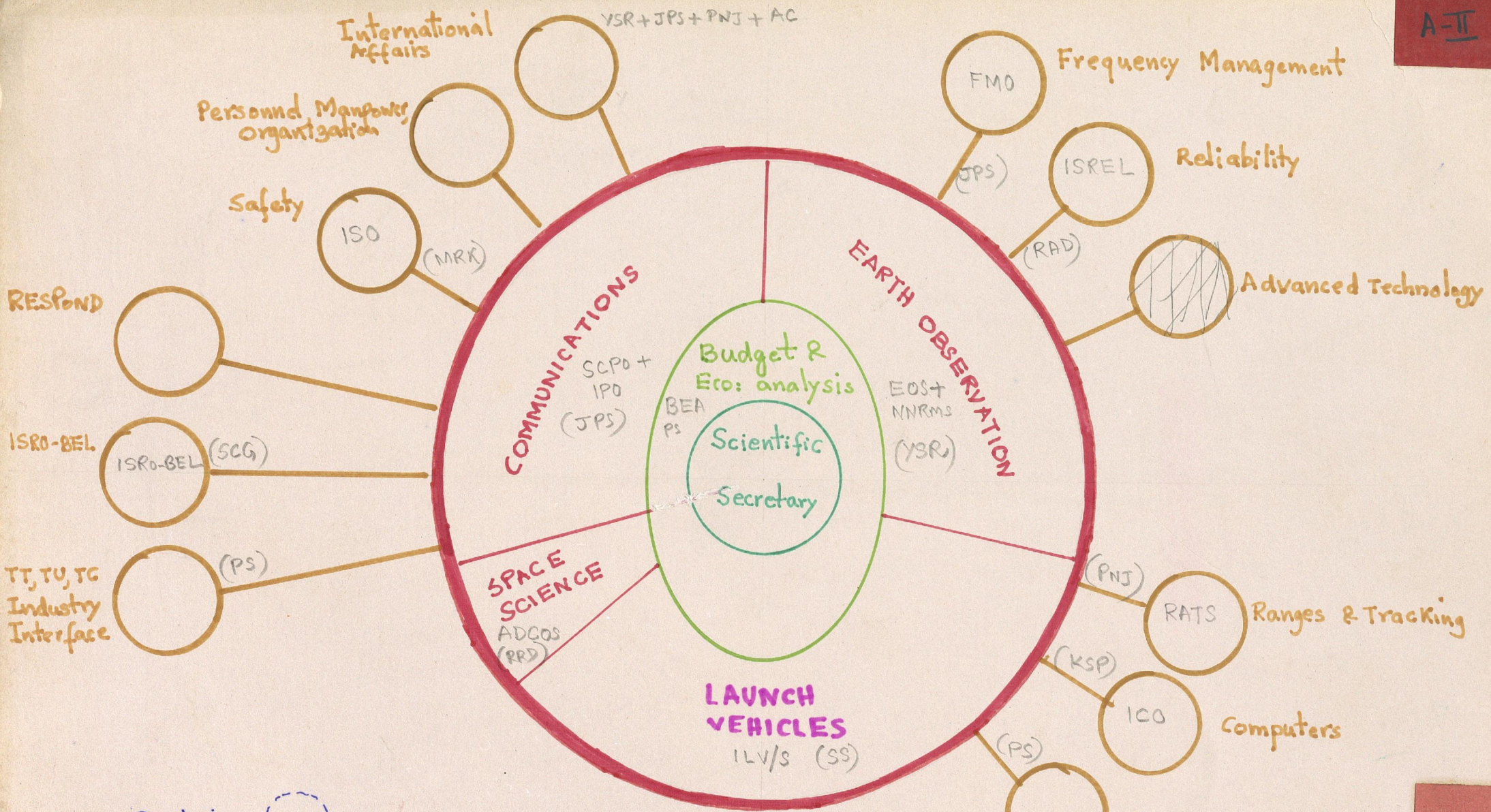
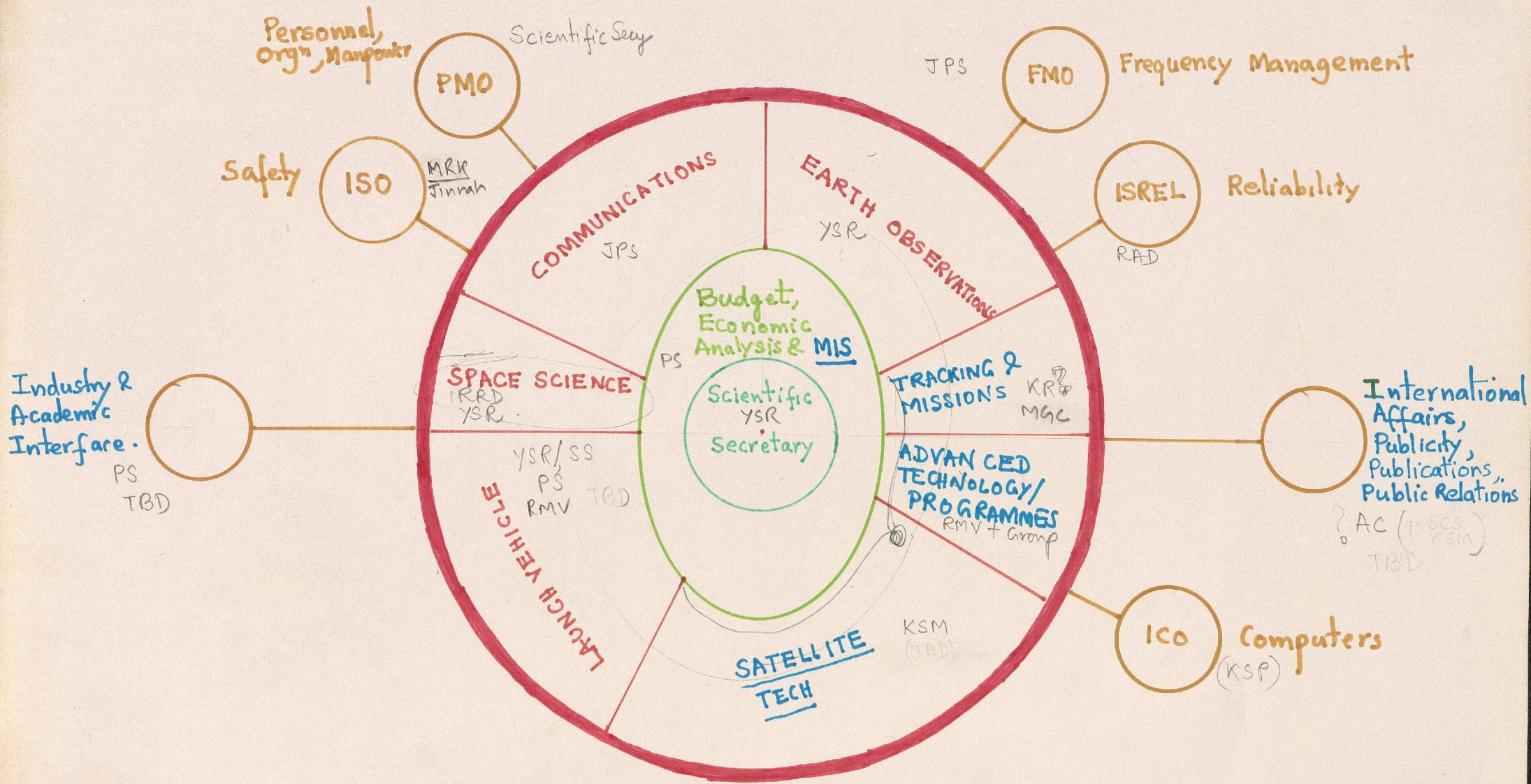


18 PROGRAMME OFFICES

1. Scientific Secretary's office
2. SCPO — JPS Director SCPO + Programme Director INSAT
3. FMO — JPS Director FMO
4. EOS — YSR Director EOS
5. ILV/S — Setty (No designation)
6. RATS — PNJ Programme Director RATS
7. ICO — KSP Director ICO
8. ISREL — RAD Director ISREL
9. ISO — MRK Director ISO
10. ISRO-BEL — SCG Chairman ISRO-BEL *
11. ADCOS — RRD Chairman ADCOS *
12. RESPOND
13. Personnel, Manpower, organization } Scientific Secy
14. International Affairs } Scientific Secy
15. Advanced Tech. } Scientific Secy
16. BEA — PS - Director BEA
17. TT, Industry, Interfau - PS - Chairman TTG
18. Chem, Propellants, Composites, Materials PS - No designation

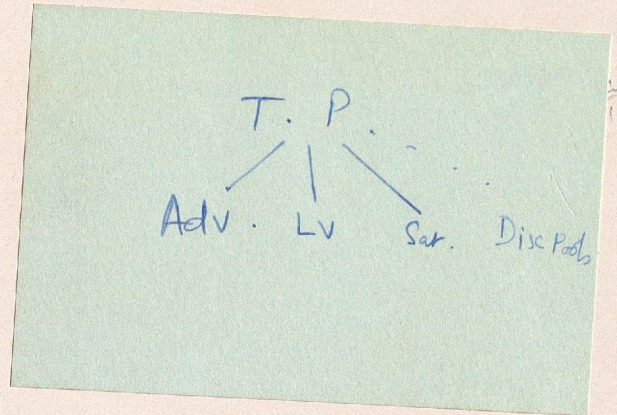


RELATIVE POSITIONS OF HQ PROGRAMME OFFICES/ FOCAL POINTS -



H
I
G
H
L
I
G
H
T
S
O
F
T
H
E
N
E
W
P
R
O
P
O
S
A
L

- * Scientific Secretary: ^{ISRO / DOS} Chief Staff officer to Chairman ISRO/ Secy DOS on all tech/scientific/managerial matters + chief of ISRO.
- * MIS to be added to BSA.
- * Programme Offices : Seven



- (i) Communications
- (ii) Earth observations/NWAMS
- (iii) Space Science

What is the relationship?
How does it create flow.

- (iv) Launch vehicles Programme (ASLV, PSLV, GSLV + RSR Tech element)
- (v) Satellites Programme (SROSS/IRS/INSAT-II ...)
- (vi) Tracking & Missions
- (vii) Advanced Technology/Programmes (a group of Research persons drawn from Centres/HQ, with a Coordinator)

Administratively how will head be set up?

* ISO, ICO, ISREL, [✓]FMO to continue as specialist support services

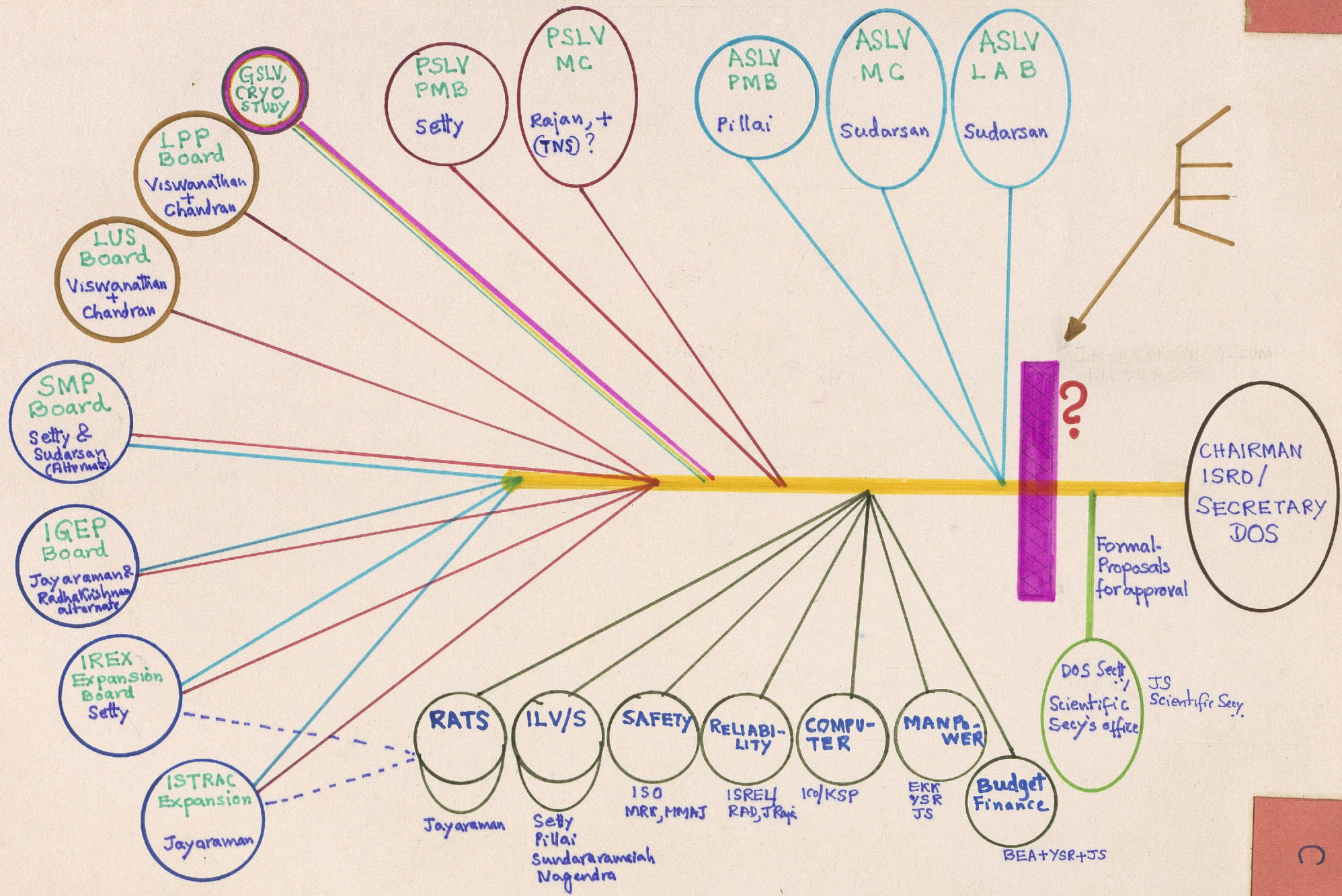
* Personnel, Manpower, Organization office - Manpower Planning & Organization elements must get importance now. This office may reside with Scientific Secretary now.

Scientific Secretary

* International Affairs, BPRu - to be integrated

* TT, TU, TC + (ISRO-BEL) + RESPOND ^{linked to LV system} to be integrated

* Ranges, (Chemicals/Propellants/Composites/Propellants ~~composites~~ materials) to go under LV Programme office. Mechanical Systems/Fabrication and Aero/Structural to be added in LV Programme office



FLOW OF HQ INPUTS ON LAUNCH VEHICLE-RELATED ACTIVITIES.