

Ex-Medical Officer :

- IRWIN & G. B. PANT HOSPITALS, NEW DELHI
- Delhi Administration
- Delhi Municipal School Medical Scheme.

Facilities Available :

All Vaccinations : Polio, D.P.T., Measles Cholera, Typhoid etc.

Lady Doctor for Women Patients with Facilities of Abortions & Copper-T etc.

Resi. & Nursing Home : a few  
C-168, Lohia Nagar,  
Ghaziabad-201001

Have written for more information  
22/2/92

~~12.~~ LITTLE GREEN HERON  
(Butorides striatus) ←

~~11.~~ WHITENECKED STORK ←  
(Ciconia episcopus)

~~13.~~ BLACK IBIS ←  
(Pseudibis papillosa)

**Dr. A.K. Gupta**

B.Sc. M.B.B.S. MAMC (Delhi) MRSH (U.K.)

PHYSICIAN AND SURGEON

Specialist in :

CHEST DISEASES

ON PANEL OF  
Bharat Electronics Ltd.  
Hindustan Insecticides Ltd.  
L. I. C.

Regd. No. 0472

Clinic :

B-9, Lohia Nagar Mkt.  
Ghaziabad - 201001

Mon. 9 A.M. To 1 P.M.

Even. 5 P.M. To 8 P.M.

Sunday Even. Closed

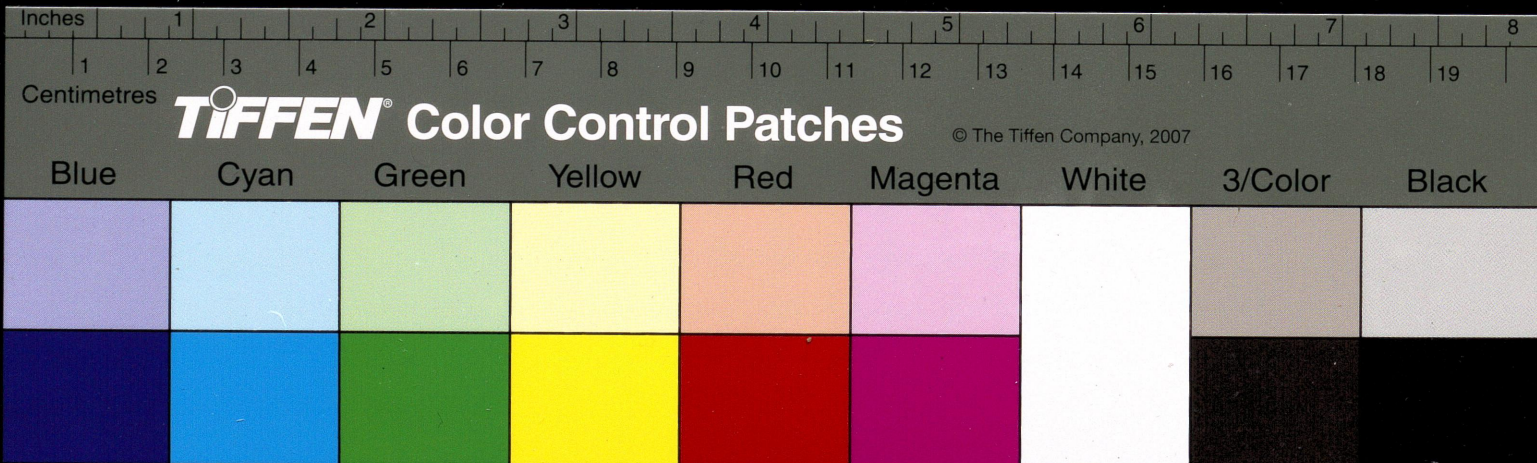
Date. 27.9.1991

144 species  
**BIRDS IN GHAZIABAD**

Birds as recorded by me during past one year. New bird species are (almost on my every field visit) being continuously added. Even to-day (27.9.91) morning I discovered three new species along the banks of river Hindon. I feel that besides this list ~~supplement~~ a few more species will be found in the coming sometime.

1. DABCHICK (Tachybaptus ruficollis)
2. LITTLE CORMORANT (Phalacrocorax niger)
3. INDIAN SHAG (Phalacrocorax fuscicollis)
4. CATTLE EGRET (Egretta <sup>ibis</sup> ~~garzetta~~)
5. LITTLE EGRET (Egretta garzetta)
6. INTERMEDIATE EGRET (Egretta intermedia)
7. LARGE EGRET (Ardea alba)
8. GREY HERON (Ardea cinerea)
9. POND HERON (Ardeola grayii)
10. OPEN BILL STORK (Anastomus oscitans)
11. PAINTED STORK (Ibis leucocephalus)
12. WHITE IBIS (Threskiornis melanocephalus)
13. BAR-HEADED GOOSE (Anser indicus)
14. WHISTLING DUCK (Dendrocygna javanica)
15. COTTON TEAL (Nettapus coromandelianus)

P.T.O. contd - Page 2.



Ex-Medical Officer :

IRWIN & G. B. PANT  
HOSPITALS, NEW DELHI  
Delhi Administration  
Delhi Municipal School  
Medical Scheme.

Facilities Available :

All Vaccinations :  
Polio, D.P.T., Measles  
Cholera, Typhoid etc.

Lady Doctor for Women  
Patients with Facilities of  
Abortions & Copper-T  
etc.

SHOVELER  
(*Anas chrypeata*)

Resi. & Nursing Home :  
C-168, Lohia Nagar,  
Ghaziabad-201001

PALLA'S FISH-EAGLE  
(*Haliaeetus leucorhynchus*)

**Dr. A.K. Gupta**

B.Sc. M.B.B.S. MAMC (Delhi) MRSH (U.K.)

ON PANEL OF  
Bharat Electronics Ltd.  
Hindustan Insecticides Ltd.  
L. I. C.

PHYSICIAN AND SURGEON  
Specialist in :  
CHEST DISEASES

Regd. No. 0472

Clinic :

B-9, Lohia Nagar Mkt.  
Ghaziabad - 201001

Mon. 9 A.M. To 1 P.M.

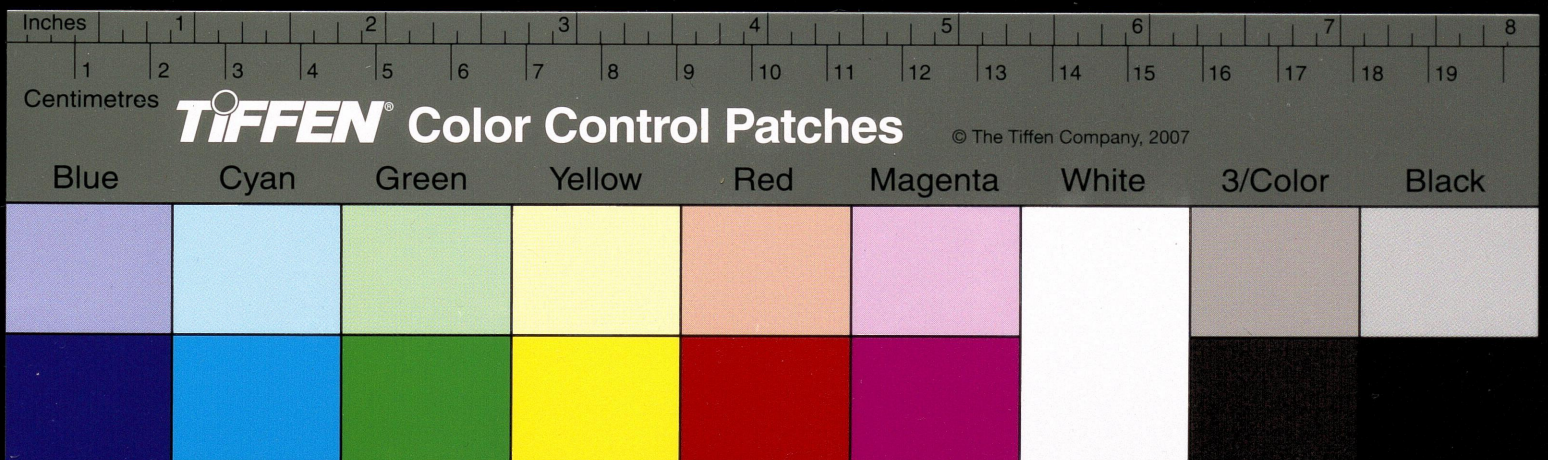
Even. 5 P.M. To 8 P.M.

Sunday Even. Closed

Date.....27/9/91

- (2.)
16. SPOTBILL (*Anas poecilorhyncha*)
  17. COMMON TEAL (*Anas crecca*)
  18. PINTAIL (*Anas acuta*)
  19. WHITE-BACKED VULTURE (*Gyps bengalensis*)
  20. SCAVENGER VULTURE (*Neophron percnopterus*)
  21. BLACK-WINGED KITE (*Elanus caeruleus*)
  22. BRAHMINY KITE (*Haliastur indus*)
  23. PARIJAH KITE (*Milvus migrans*)
  24. MARSH HARRIER (*Circus aeruginosus*)
  25. HEN HARRIER (*C. cyaneus*)
  26. CRESTED SERPENT-EAGLE (*Spilornis cheela*)
  27. STEPPE EAGLE (*Aquila rapax nipalensis*)
  28. SHIKRA (*Accipiter badius*)
  29. PEA FOWL (*Pavo cristatus*)
  30. BLACK PARTRIDGE (*Francolinus francolinus*)
  31. GREY PARTRIDGE (*Francolinus pondicerianus*)
  32. COMMON QUAIL (*Coturnix coturnix*)
  33. SARUS CRANE (*Grus antigone*)
  34. COMMON CRANE (*Grus grus*)
  35. MOORHEN (*Gallinula chloropus*)
  36. COOT (*Fulica atra*)
  37. PURPLE MOORHEN (*Porphyrio porphyrio*)
  38. BRONZE-WINGED JACANA (*Metopidius indicus*)

P.T.O. continuation Page - 3.



Ex-Medical Officer :

- IRWIN & G. B. PANT HOSPITALS, NEW DELHI
- Delhi Administration
- Delhi Municipal School Medical Scheme.

Facilities Available :

All Vaccinations :  
Polio, D.P.T., Measles  
Cholera, Typhoid etc.

Lady Doctor for Women  
Patients with Facilities of  
Abortions & Copper-T  
etc.

Resi. & Nursing Home :  
C-168, Lohia Nagar,  
Ghaziabad-201001

~~50.~~ RING DOVE  
(COLLARED DOVE)  
[Streptopelia decora?]

## Dr. A.K. Gupta

B.Sc. M.B.B.S. MAMC (Delhi) MRSH (U.K.)

ON PANEL OF  
Bharat Electronics Ltd.  
Hindustan Insecticides Ltd.  
L. I. C.

PHYSICIAN AND SURGEON  
Specialist in :  
CHEST DISEASES

(3)

Regd. No. 0472

Clinic :

B-9, Lohia Nagar Mkt.  
Ghaziabad - 201001

Mon. 9 A.M. To 1 P.M.

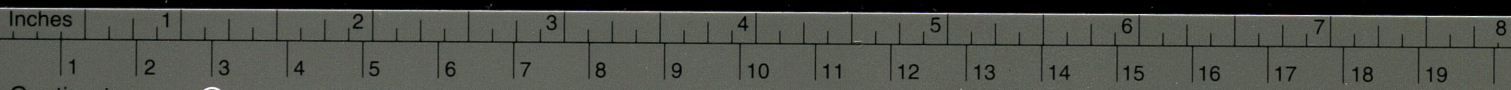
Even. 5 P.M. To 8 P.M.

Sunday Even. Closed

Date.....27/9/91

39. PHEASANT-TAILED JACANA (*Hydrophasianus chirurgus*)
40. RED-WATTLED LAPWING (*Vanellus indicus*)
41. SPUR-WINGED LAPWING (*V. spinosus*)
42. LITTLE RINGED PLOVER (*Charadrius dubius*)
43. WOOD SANDPIPER (*Tringa glareola*)
44. COMMON SANDPIPER (*Tringa hypoleucos*)
45. LITTLE STINT (*Calidris minutus*)
46. BLACK-WINGED STILT (*Himantopus himantopus*)
47. STONECURLER (*Burhinus oedienemus*)
48. BLACK-HEADED GULL (*Larus ridibundus*)
49. RIVER TERN (*Sterna aurantia*)
50. WHISKERED TERN (*Chlidonias hybrida*)
51. LITTLE BROWN DOVE (*Streptopelia senegalensis*)
52. SPOTTED DOVE (*S. chinensis*)
53. Red TURTLE DOVE (*S. tranquebarica*)
54. BLUE ROCK PIGEON (*Columbia livia*)
55. ROSE-RINGED PARAKEET (*Psittacula krameri*)
56. BLOSSOM-HEADED PARAKEET (*P. cynocephala*)
57. KOEL (*Eudynamis scolopacea*)
58. COUCAL (*Centropus sinensis*)
59. SPOTTED OWLET (*Athene brama*)
60. LITTLE GREEN BEE-EATER (*Merops orientalis*)

Contd - Page 4

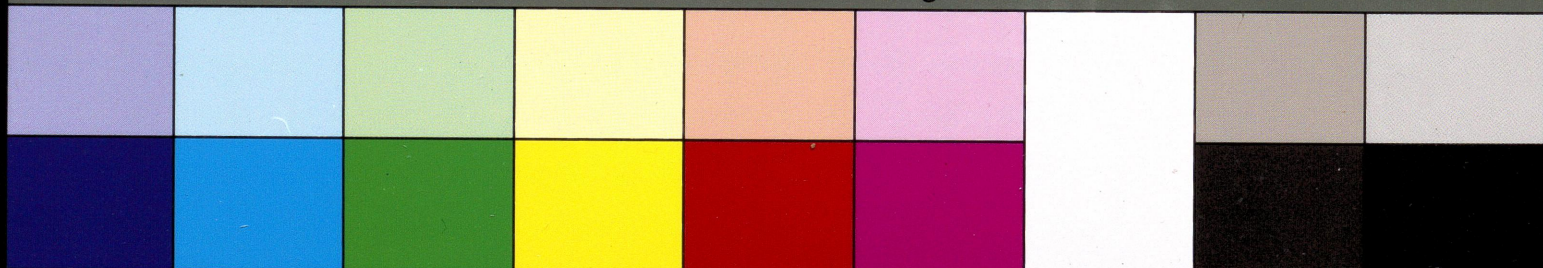


Centimetres

TIFFEN Color Control Patches

© The Tiffen Company, 2007

Blue Cyan Green Yellow Red Magenta White 3/Color Black



Ex-Medical Officer :

- IRWIN & G. B. PANT HOSPITALS, NEW DELHI
- Delhi Administration
- Delhi Municipal School Medical Scheme.

Facilities Available :

1. All Vaccinations : Polio, D.P.T., Measles Cholera, Typhoid etc.
2. Lady Doctor for Women Patients with Facilities of Abortions & Copper-T etc.

Resi. & Nursing Home :  
C-168, Lohia Nagar,  
Ghaziabad-201001

~~100~~ HOUSE SWIFT  
(*Apus affinis*)

DUSKY CRAG MARTIN  
(*Hirundo concolor*)

WHITE WAGTAIL

~~100~~ *M. a. personata*

YELLOW WAGTAIL

YELLOW HEADED  
WAGTAIL

~~100~~ *M. f. melanogrisea*

## Dr. A.K. Gupta

B.Sc. M.B.B.S. MAMC (Delhi) MRSH (U.K.)  
PHYSICIAN AND SURGEON

ON PANEL OF  
Bharat Electronics Ltd.  
Hindustan Insecticides Ltd.  
L. I. C.

Specialist in :  
CHEST DISEASES  
(4)

Regd. No. 0472

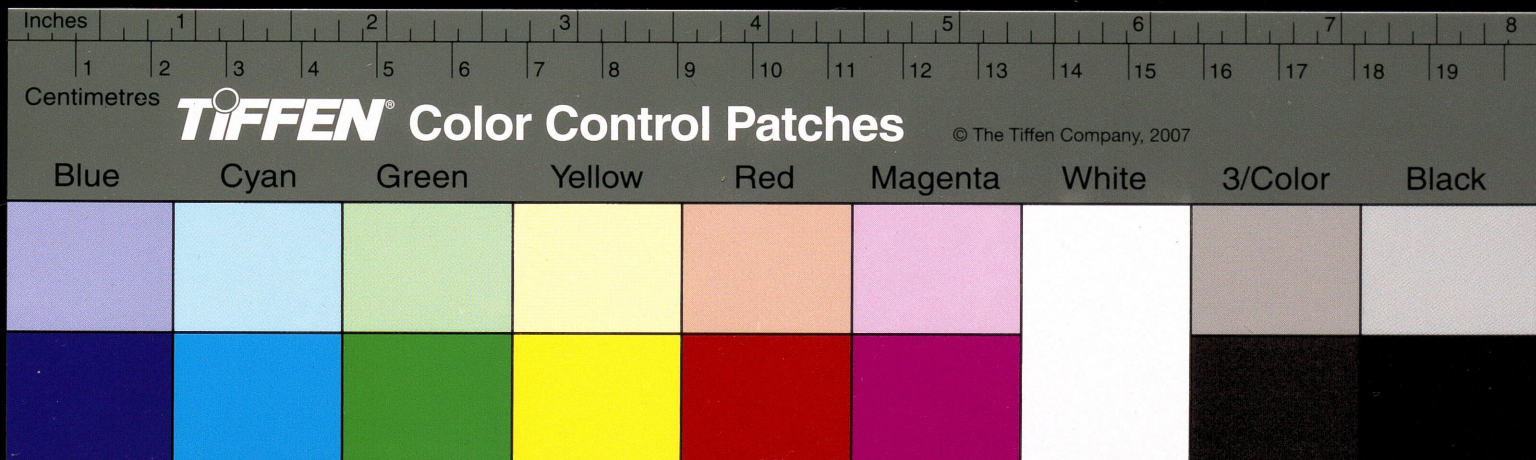
Clinic :  
B-9, Lohia Nagar Mkt.  
Ghaziabad - 201001

Mon. 9 A.M. To 1 P.M.  
Even. 5 P.M. To 8 P.M.  
Sunday Even. Closed

61. WHITE-BREASTED KINGFISHER  
(*Halcyon smyrnensis*)
62. PIED KINGFISHER (*Ceryle rudis*)
63. COMMON KING FISHER (*Alcedo atthis*)
64. COMMON GREY HORNBILL (*Tockus birostris*)
65. HOOPOE (*Upupa epops*)
66. INDIAN ROLLER (*Coccyzus benghalensis*)
67. ASHY-CROWNED FINCH-LARK (*Eremopterix grisea*)  
(Black Bellied Finch Lark)
68. CRESTED LARK (*Galerida cristata*)
69. SMALL SKYLARK (*Alauda gulgula*)
70. SHORT TOED LARK (*Calandrella cinerea*)
71. CLIFF SWALLOW (*Hirundo fluvicola*)
72. WIRE TAILED SWALLOW (*H. smithii*)
73. RED-RUMPED SWALLOW (*H. daurica*)
74. INDIAN PIPIT (*Anthus novaeseelandiae*)
75. *Motacilla alba dukhimensis*
76. *M. a. leucopsis*
77. *M. a. alboides*
78. LARGE PIED WAGTAIL (*M. madagascariensis*)
79. *Motacilla flava beema*
80. *M. f. thumbergi*
81. *Motacilla citreola citreola*
82. *M. c. calcarata*

Date.....27/9/19

enter Page - 5



Ex-Medical Officer :

- IRWIN & G. B. PANT HOSPITALS, NEW DELHI
- Delhi Administration
- Delhi Municipal School Medical Scheme.

Facilities Available :

1. All Vaccinations : Polio, D.P.T., Measles Cholera, Typhoid etc.
2. Lady Doctor for Women Patients with Facilities of Abortions & Copper-T etc.

COMMON WOODSHRIKE ←

*Ctaphrodornis pondicerianus*  
OR  
BROWN SHRIKE  
(*Lanius cristatus*)

Resi. & Nursing Home :

C-168, Lohia Nagar,  
Ghaziabad-201001

# Dr. A.K. Gupta

B.Sc. M.B.B.S. MAMC (Delhi) MRSH (U.K.)

ON PANEL OF

Bharat Electronics Ltd.  
Hindustan Insecticides Ltd.  
L. I. C.

PHYSICIAN AND SURGEON

Specialist in :

CHEST DISEASES

(5)

Regd. No. 0472

Clinic :

B-9, Lohia Nagar Mkt.  
Ghaziabad - 201001

Mon. 9 A.M. To 1 P.M.

Even. 5 P.M. To 8 P.M.

Sunday Even. Closed

Date..... 27/9/91

83. RED VENTED BULBUL (*Pycnonotus cafer*)
84. RED-WHISKERED BULBUL (*P. jocosus*)
85. RUFIOUS-BACKED SHRIKE (*Lanius schach*)
86. BAY-BACKED SHRIKE (*L. vittatus*)
87. INDIAN GREY SHRIKE (*L. excubitor*)
88. MAGPIE-ROBIN (*Copsychus saularis*)
89. STONE CHAT (*Saxicola torquata*)
90. PIED BUSH-CHAT (*S. caprata*)
91. INDIAN ROBIN (*Saxicoloides fulicata*)
92. BROWN ROCK-CHAT (*Cercomela fusca*)
93. BROWN CHIFF CHAFF (*Phylloscopus collybita*)
94. TAILOR BIRD (*Orthotomus sutorius*)
95. ASHY PRINIA (*Prinia socialis*)
96. INDIAN PRINIA (*P. subflava*)
97. FRANKLIN'S WREN <sup>W</sup>BARBLER (*P. hodgsonii*)
98. JUNGLE BABLER (*Turdoides striatus*)
99. LARGE GREY BABLER (*T. malabaricus*)
100. COMMON BABBLER (*T. caudatus*)
101. PURPLE SUNBIRD (*Nectarinia asiatica*)
102. BLUE THROAT (*Erithacus svecicus*)
103. RED AVADAVAT (*Amandara amandara*)
104. SPOTTED MUNIA (*Lonchura punctulata*)
105. WHITE BACKED MUNIA (*L. striata*)
106. WHITE THROATED MUNIA (*L. malabarica*)
107. BLACK HEADED MUNIA (*L. malacca*)  
(white bellied form)

RUFIOUS-BELLIED BABBLER

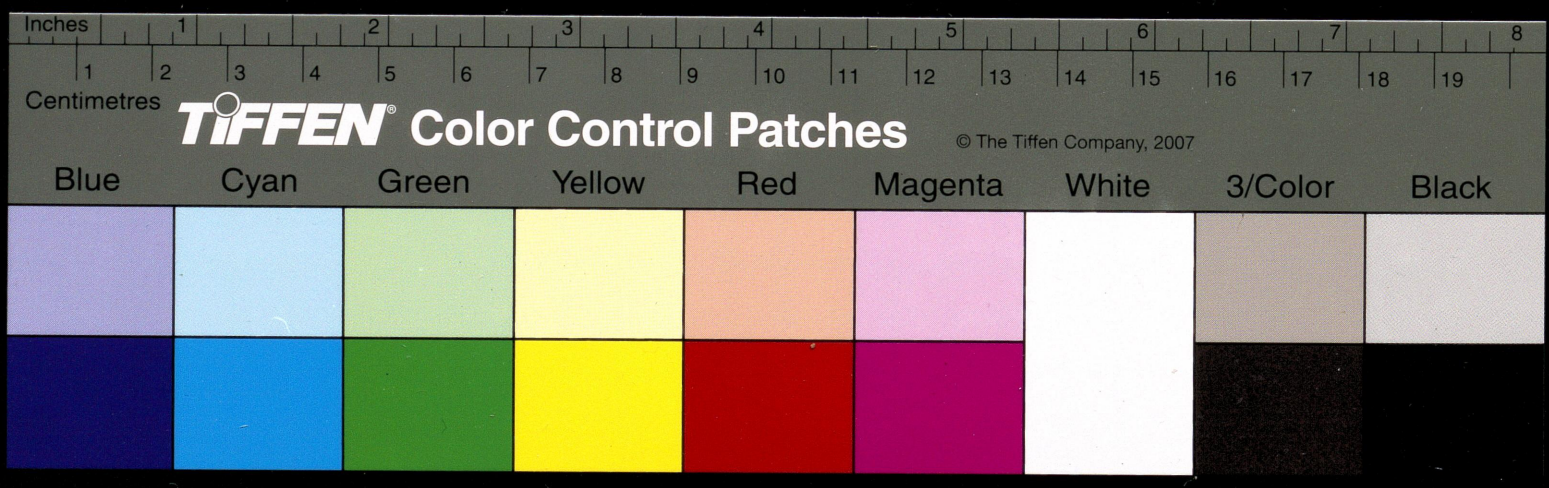
(*Dumetia hyperythra*) ←

OR

YELLOW-EYED BABBLER

(*Chrysomma sinense*)

Contd. Page-6



Ex-Medical Officer :

IRWIN & G. B. PANT  
HOSPITALS, NEW DELHI  
Delhi Administration  
Delhi Municipal School  
Medical Scheme.

Facilities Available :

All Vaccinations :  
Polio, D.P.T., Measles  
Cholera, Typhoid etc.

Lady Doctor for Women  
Patients with Facilities of  
Abortions & Copper-T  
etc.

Resi. & Nursing Home :  
C-168, Lohia Nagar,  
Ghaziabad-201001

## Dr. A.K. Gupta

B.Sc. M.B.B.S. MAMC (Delhi) MRSH (U.K.)

ON PANEL OF  
Bharat Electronics Ltd.  
Hindustan Insecticides Ltd.  
L. I. C.

PHYSICIAN AND SURGEON

Specialist in :

CHEST DISEASES

(6)

Regd. No. 0472

Clinic :

B-9, Lohia Nagar Mkt.  
Ghaziabad - 201001

Mon. 9 A.M. To 1 P.M.

Even. 5 P.M. To 8 P.M.

Sunday Even. Closed

Date: 27/9/91

108. BAYA WEAVER (*Ploceus philippinus*)
109. STREAKED WEAVER (*P. manyar*)
110. BLACK-THROATED WEAVER (*P. benghalensis*)?
111. HOUSE SPARROW (*Passer domesticus*)
112. BRAHMINY MYNA (*Sturnus pagodarum*)
113. PIED MYNA (*S. contra*)
114. BANK MYNA (*Acridotheres gingianus*)
115. COMMON MYNA (*A. tristis*)
116. INDIAN TREE PIE (*Dendrocitta vagabunda*)
117. GOLDEN ORIOLE (*Oriolus oriolus*)
118. JUNGLE CROW (*Corvus macrorhynchos*)
119. HOUSE CROW (*C. splendens*)
120. WHITE BELLIED DRONGO (*Dicrurus caeruleus*)
121. BLACK DRONGO (*D. adsimilis*)
122. PURPLE HERON (*Ardeidae purpurea*)
123. ~~SHOVELER~~ (*Anas clypeata*)
124. WHITE BREASTED WATERHEN (*Amaurornis phoeniceus*)
125. FERRUGINOUS DUCK (*Aythya nyroca*)
126. ~~RING DOVE [COLLARED DOVE]~~ (*Streptopelia dussumieri*)
127. INDIAN ROBBIN (*Spizella monticola*)
127. PAINTED SNIPE (*Rostratula benghalensis*)
128. COMMON SNIPE (*Gallinago gallinago*)
- M.A. → 129. YELLOW WATTLED LAPWING (*Vanellus malabaricus*)
130. ~~HOUSE SWIFT~~ (*Apus affinis*)
131. LESSER SPOTTED EAGLE (*Aquila pomarina*)
- COMMON STARLING (*Sturnus vulgaris*)

