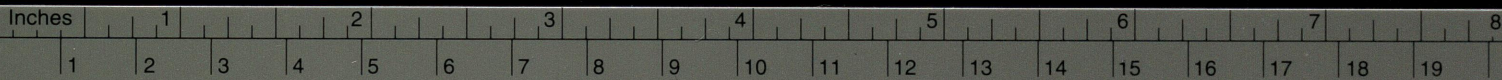


THE TAILOR BIRD AS CONSUMER OF KHAPRA BEETLE LARVAE & FOOD-GRAIN
PEST by Indra Kumar Sharma.

In November 1980 our house-store wheat was badly infested by the larvae of the Khapra beetle (Targoderma granarium). When we placed infested wheat on the roof of our house for pest control (killing) by sunlight, I was surprised to observe that a pair of the tailor bird (Orthotomus sutorius) of my garden heavily preyed upon the larvae with intensive search for these which escaped into corners and creeks in shady areas. This shows that the tailor bird is effective controller of Khapra beetle larvae which is serious pest of stored wheat, sorghum, rice, barley, gram and dry fruits, in India and many parts of the world.

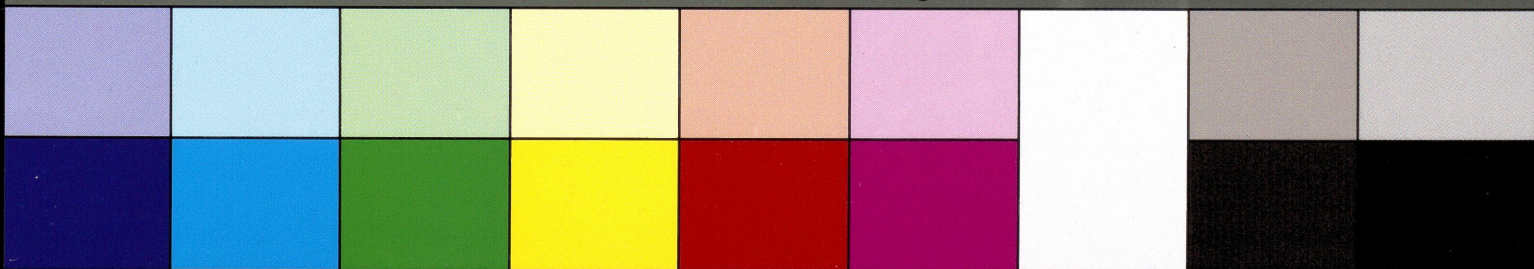


Centimetres

TIFFEN Color Control Patches

© The Tiffen Company, 2007

Blue Cyan Green Yellow Red Magenta White 3/Color Black



CHECKLIST OF BIRDS OF JODHPUR by INDRA KUMAR SHARMA

Jodhpur city and its surrounding areas are very rich with avi-fauna because of protection by the local men and because of comprise of several different typical environments (biotopes) having specific avi-fauna there. Occurrence of avi-fauna according to the typical environments (biotopes) is as follows. In the list only common or fairly common birds are mentioned, rare birds have been omitted.

URBAN AREAS

Accipitridae: Pariah kite (*Milvus migrans*), Bengal vulture (*Gyps bengalensis*), Shikra (*Accipiter badius*), Peafowl (*Pavo cristatus*),
 Phasianidae:
 Columbidae: Blue Rock Pigeon (*Columba livia*), Indian Ring-dove (*Streptopelia decacote*), Little brown dove (*S. senegalensis*), Psittacidae:
 Indian Rose-ring parakeet (*Psittacula krameri*). Strigidae: Great Horned owl (*Bubo bubo*), Spotted owl (*Athene brama*). Apodidae: House Swift (*Apus affinis*). Meropidae: Green bee-eater (*Merops orientalis*)
 Hirundinidae: Common swallow (*Hirundo rustica*). Sturnidae: Common myna (~~Stxxxxx~~ *Acridotheres tristis*), Bank myna (*A. ginginianus*), Brahmini myna (*Sturnus pagodarum*), Rosy pastor (*S. roseus*). Corvidae: House crow (*Corvus splendens*), Jungle crow (*C. macrorhynchos*). Turdinae: Indian robin (*Saxicoloides fulicata*), Nectarinidae: Sun bird (*Nectarinia asiatica*). Ploceidae: House sparrow (*Passer domesticus*). Timalinae: Jungle babbler (*Turdoides striatus*). Pycnonotidae: Redvented bulbul (*Pycnonotus cafer*), Whitecheeked bulbul (*P. leucogynus*)

SUBURB AREAS Birds additional to the urban areas including house-gardens, small agricultural farms outskirts of suburbs.

Accipitridae: Tawny eagle (*Aquila rapax*), Laggar falcon (*Falco biarmicus*), Kestrel (*F. tinnunculus*). Phasianidae: Grey partridge (*Francolinus pondicerianus*). Charadriidae: Redwattled lapwing (*Vanellus indicus*). Columbidae: Red turtle-dove (*Streptopelia tranquebarica*)
 Alcedinidae: Common king-fisher (*Alcedo atthis*). Coraciidae: Indian Roller (*Coracias bengalensis*). Upupidae: Hoopoe (*Upupa epops*).
 Picidae: Maharatta wood-pecker (*Dendrocopos maharattensis*). Alaudidae:
 Blackbellied finchlark (*Eremopterix grisea*). Laniidae: Grey shrike

