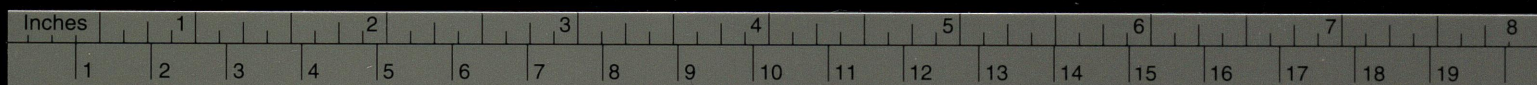








90. Spotted owl (*Athene brama*).
91. Shorteared owl (*Asia flammeus*).
92. Alpine swift (*Apus melba*).
93. House swift (*A. affinis*).
94. Palm swift (*Cypsiurus parvus*).
95. Lesser Pied Kingfisher (*Ceryle rudis*). Ruddy Kingfisher
96. Common Kingfisher (*Alcedo atthis*).
97. Whitebreasted Kingfisher (*Halcyon smyrnenensis*).
98. Blackcapped Kingfisher (*H. pileata*).
99. Bluetailed bee-eater (*Merops philippinus*).
100. Green Bee-eater (*M. orientalis*).
101. Indian Roller (*Coracias benghalensis*).
102. Hoopoe (*Upupa epops*).
103. Crimsonbreasted barbet (*Megalaima haemacephala*).
104. Lesser Goldenbacked woodpecker (*Dinopium benghalense*).
105. Indian Pitta (*Pitta brachyura*).
106. Redwinged bushlark (*Mirafra erythroptera*).
107. Blackbellied finchlark (*Eremopterix grisea*).
108. Rufoustailed finchlark (*Ammonanes proenicurus*).
109. Short-toed lark (*Calandrella cinerea*).
110. Eastern skylark (*A. lauda gulgula*).
111. Collared sand martin (*Riparia riparia*).
112. Common swallow (*Hirundo rustica*).
113. Redrumped swallow (*H. daurica*).
114. Brown shrike (*Lanius cristatus*).
115. Golden oriole (*Coriolus oriolus*).
116. Black Drongo (*Dicrurus adsimilis*). Racket-Tailed Drongo
117. Grey Drongo (*D. leucophaeus*).
118. Whitebellied drongo (*D. caeruleus*).
119. Ashy swallow shrike (*Artamus fuscus*).
120. Blackheaded myna (*Sturnus pagodarum*). Bank Myna  
Greyheaded Myna
121. Common myna (*Acridotheres tristis*).
122. Indian treepie (*Dendroitta vagabunda*).
123. House crow (*Corvus splendens*).
124. Jungle crow (*Corvus macrorhynchos*).
125. Common wood shrike (*Tephrodornis pondicerianus*).
126. Black-headed cuckoo-shrike (*Coracina melanoptera*).
127. Small Minivet (*Pericrocotus cinnamomeus*).
128. Common Iora (*Aegithina tiphia*).
129. Redwhiskered bulbul (*Pycnonotus jocosus*).
130. Redvented bulbul (*P. cafer*).
131. Whitebrowed bulbul (*P. luteolus*).
132. Whiteheaded babbler (*Turdoides affinis*).
133. Brown Flycatcher (*Muscicapa latirostris*).
134. Redbreasted Flycatcher (*M. parva*).
135. Tickell's Blue Flycatcher (*M. tickelliae*).
136. Paradise Flycatcher (*Terpsiphone paradisi*).
137. Blacknaped Flycatcher (*Monarcha azurea*).
138. Streaked Fantail warbler (*Cisticola juncidis*).
139. Plain Longtail warbler (*Primia subflava*).
140. Ashy longtail warbler (*Primia socialis*).



Centimetres

**TIFFEN** Color Control Patches

© The Tiffen Company, 2007

Blue

Cyan

Green

Yellow

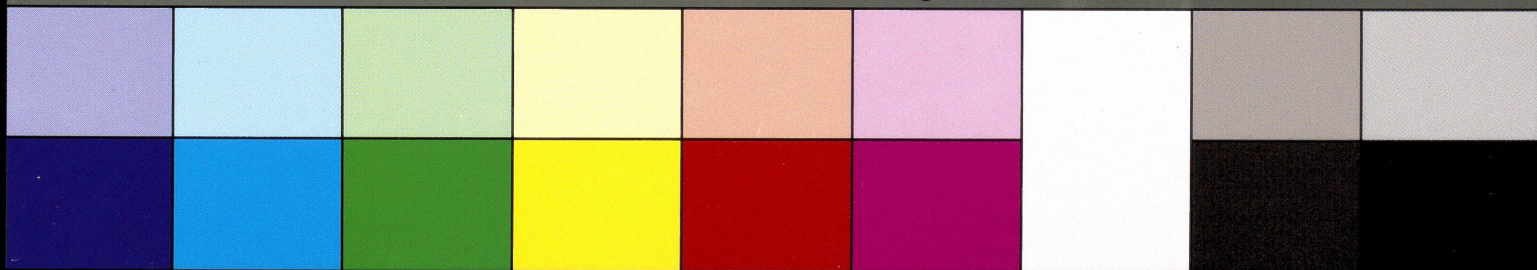
Red

Magenta

White

3/Color

Black



141. Tailorbird (*Orthotomus sutorius*).
142. Thickbilled warbler (*Phragamaticola aedon*).
143. Blyth's reed warbler (*Acrocephalus dumetorum*).
144. Lesser whitethroat (*Sylvia curruca*).
145. Greenish warbler (*Phylloscopus* spp.).
146. Magpie-robin (*Copsychus saularis*).
147. Pied Bushchat (*Saxicola caprata*).
148. Indian Robin (*Saxicoloides fulicata*).
149. ~~Red~~ Paddy field pipit (*Anthus novaeseelandiae*).
150. Forest wagtail (*Motacilla indica*).
151. Grey-headed yellow-wagtail (*M. flava thunbergi*).
152. Blue-headed yellow wagtail (*M. flava beema*).
153. Black-headed yellow wagtail (*M. flava melanogrisea*).
154. Yellow-headed wagtail (*M. citreola*).
155. Grey wagtail (*M. caspica*).
156. White wagtail (*M. alba dukhunensis*).
157. Large pied wagtail (*M. maderaspatensis*).
158. Purple-rumped sunbird (*Nectarinia zeylonica*).
159. Loten's sunbird (*N. lotenia*).
160. House sparrow (*Passer domesticus*).
161. Baya weaverbird (*Ploceus philippinus*).
162. Spotted Munia (*Lonchura punctulata*).

In addition, my friends have recorded the following:

- (1) Yellow Bittern (*Ixobrychus sinensis*)
- (2) Painted Stork (*Ibis leucocephalus*)
- (3) Openbill stork (*Anastomus oscitans*)
- (4) Pintail (~~*Anas acuta*~~)
- (5) Shoveller (~~*A. clypeata*~~)
- (6) Red crested Pochard (*Netta rufina*).
- (7) Black crested Baza (*Avicada leucophotes*).
- (8) Pallas's Fishing Eagle (~~*Haliaeetus leucoryphus*~~)
- (9) Indian Longbilled vulture (~~*Gyps indicus*~~) - Museum record.
- (10) Asiatic Sparrowhawk (*Accipiter nisus*) - "
- (11) Desert Buzzard (*Buteo vulpinus*) - "
- (12) Spotted Redshank (~~*Tringa erythropus*~~)
- (13) Great stone Plover (~~*Esacus magnirostris*~~)
- (14) Painted snipe (~~*Rostratula benghalensis*~~)
- (15) Whitecheeked Tern (~~*Sterna repressa*~~) - Museum record.
- (16) Asian Pectoral Sandpiper (~~*Calidris acuminatus*~~) - "
- (17) Red-winged crested cuckoo (~~*Clamator coromandus*~~) - "
- (18) Barn owl (*Tyto alba*).
- (19) Mottled wood owl (*Strix ocellata*) - Museum record.
- (20) Indian Nighthawk (*Caprimulgus indicus*).
- (21) Ruddy Kingfisher (~~*Halcyon coromanda*~~)
- (22) Rackettailed Drongo (~~*Dicrurus paradiseus*~~) - Museum Record.
- (23) Grey-headed Myna (~~*Sturnus malabaricus*~~)
- (24) Bank Myna (~~*Acridotheres ginginianus*~~) - Museum record.
- (25) Black Bittern (*Dupetor flavicollis*) - "

