

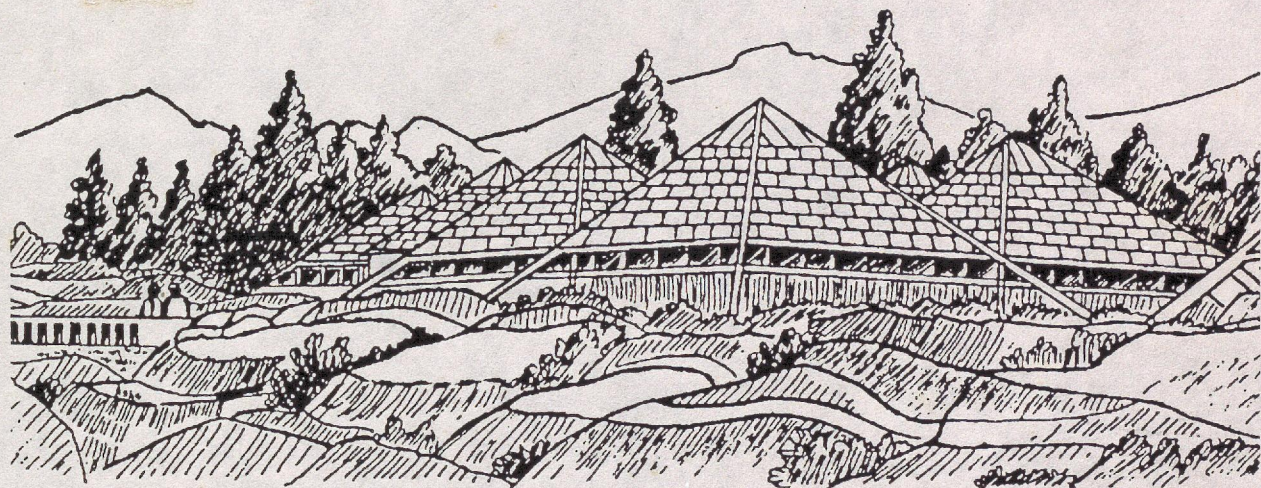
To

Mr. B. C.

Campus Biodiversity

Master Copy

FLORA AND FAUNA OF CHANDRABANI
(Biodiversity in WII Campus)



September, 1992



भारतीय वन्यजीव संस्थान
Wildlife Institute of India

**FLORA AND FAUNA OF CHANDRABANI
(Biodiversity in WII Campus)**

CHECKLISTS PREPARED BY:

VEGETATION:	P.L.SAKLANI (WII, Herbarium)
INVERTIBRATES:	PRACHI MEHTA and ANAND PENDHARKAR
HERPETOFAUNA:	S. BHUPATHY and JUSTUS JOSHUA
AVIFAUNA:	JUSTUS JOSHUA
MAMMALS:	JUSTUS JOSHUA

COLLATED AND COMPILED BY B.C. CHOUDHURY

September, 1992

On the southern fringe of the Doon, in a 80 ha. of Sal forest and grassy downs of Chandrabani, is located the new campus of the Wildlife Institute of India. Contiguous with the Shiwaliks, and literally with the Rajaji National Park, it will not be out of place to say that the institute campus has a Protected Area on its backyard and the city of Dehra Dun on the front. Enclosed in a boundary since 1985, the wilderness within has blossomed. With minimal alteration of this natural world, has sprung-up an institute where Nature is the Password and Conservation the Creed.

One can come across within the campus an interspersed Sal forest, grassy undulations, meandering streams dotted with pools of water. Surrounding this naturalness, is a country side with farmlands and orchards. This diversity of landscape, vegetation and habitat supports equally diverse life forms which make it a living laboratory for wildlifers who come here to live in and learn about nature.

The pioneer community of wildlifers moved into this idyllic campus in January, 1992 and started exploring the surroundings. In this age of biodiversity, it is heartening to know that this small patch of wilderness supports such a large number of flora and fauna. Translated into the following pages is the effort and the result of this venture. By no means this is a complete list. A beginning has been made for inheritors of this wilderness to complete this work.

THE VEGETATION

This checklist of vegetation is prepared on the basis of collections since March 1992. The final checklist will be prepared after completion of the collections. All collections are from Chandrabani and represent most of the common or characteristic tree, shrub, herb, climbers, sedges, grass and fern. The list (185 species in 152 genera, in 54 families). The list is arranged alphabetically into families.

ACANTHACEAE

Barleria cristata, Linn

Dicliptera bulpleuroides, Nees

Justicia adhatoda, Linn

J. peploides, (Nees) Clarke

Rungia pectinata, (Linn) Nees

AMARANTHACEAE

Achyranthes aspera, W Ait

Aerva sanguinolenta, (L) Bl.

A.scandens, Wall ex Moq

Alternanthera pugens, H.B.K.

A.sessilis, (L) R.Br.ex DC

Amaranthus spinosus, Linn

A.tricolor, Linn

A.Viridis, Linn

Gomphrena celosioides, Mart

APIACEAE

Centella asiatica, (L) Urb

APOCYNACEAE

Carissa carandas, L

C. opaca, Stapf.

Holarrhena antidysenterica, Wall

Ichnocarpus frutescens, Br

Rauwolfia serpentina, Benth

Vallaris solanacea, O.Kuntze

Wrightia tomentosa, Roem & Sch.

ARACEAE

Colocasia antiquorum, Schult

ASCLEPIADACEAE

Calotropis procera, (Willd) Dry & ex W. Ait

ASTERACEAE

Acanthospermum hispidum, DC

Ageratum conyzoides, Linn

Artemisia parviflora, Buch-Ham

Bidens pilosa, Linn

Blainvillea acmella, (L) Philipson

Blumea lacera, DC

Caessulia axillaris, Roxb.

Centipeda minima, (L) A.Br.& Asch

Cotula Hemisphaerica, Wall ex Benth

Emilia sonchifolia, (L) DC

Eupatorium adenophorum, spreng

Gnaphalium polycaulon, Pers

Siegesbeckia orientalis, Linn

Vicoa indica, (Linn) DC

BORAGINACEAE

Ehretia laevis, Roxb

Trichodesma indicum, R.Br.

BIXACEAE

Xylosma longifolia, clos

BRASSICACCAE

Brassica juncea, (L) czern & coss

Capsella bursa-pastoris, Moench

CELASTERACEAE

Celastrus paniculata, Willd

HENOPODIACEAE

Chenopodium ambrosioides, Linn

COMMELINACEAE

Commelina diffusa, Burm.f.

Cynotis fasciculata, Schult

CONVOLVULACEAE

Convolvulus arvensis, Linn

Evolvulus nummularius, Linn

CUCURBITACEAE

Trichosanthes cucumerian, L

CYPERACEAE

Cyperus Compressus, Linn

C. cyperoides, (Linn) O.Ktz

C. difformis, L

C. iria, L

C.nutans, Vahl

C.pumilus, L

C.rotandus, Linn

Fimbristylis dichotoma, (L) Vahl

DIOSCOREACEAE

Dioscorea bulbifera, Linn

D.pentaphylla, Linn

D.sativa, Thumb

DIPTEROCARPACEAE

Shorea robusta, Gaertn f

EUPHORBIACEAE

- Jatropha curcans*, DC
Mallotus philipensis, Muell-Arg
Phyllanthus urinaria, Linn
Putranjiva roxburghii, Wall
Securinega Virosa, (Roxb) Ballion

FLACOURTIACEAE

- Casearia elliptica*, willd
Flacourtia indica, merr

GERANIACEAE

- Biophytum sensitivum*, (Linn) DC
Geranium lucidum, Linn

LAMIACEAE

- Anisomeles indica*, (L) O. Kuntze
A. ovata, R.Br.
Callicarpa macrophylla, Vahl.
Perilla fruticosa, D.Don
Plectranthus japonicus, (Burm f) Koidz

LEEACEAE

- Leea asiatica*, (L) Ridsdale
Ampelocissus latifolia, (Roxb) Planch

LEGUM-FABACEAE

- Crotalaria albida*, Heyne
C. sericea, Retz.
Desmodium gangeticum, (Linn) DC.
D.pulchellum, (Linn) Benth
Flemingia macrophylla, Willd & Ktze
F. Strobilifera, (L) R.Br.
Melilotus indica, (Linn) All
Neptunia triquetra, Benth
Sesbania bipinosa, L
Zornia zibosa, Spreng

LEGUM-CAESALPINIACEAE

- Cassia occidentalis*, Linn
C. tora, Linn

LEGUM-MIMOSACEAE

- Mimosa himalayana*, Gamble
M.pudica, L

LILIACEAE

- Asparagus adscendens*, (Roxb)

LYTHRACEAE

- Lawsonia alba*, Lamk
Wendlandia exserta, (Roxb) DC

MALVACEAE

Abelmoschus esculentus, (L) Moench

Lazanza lampas, (Cav) Alex

Sida acuta, Burm

S. Cordifolia, Linn

S. humilis, Wild

Urena lobata, Linn

MELIACEAE

Melia azeadarach, Linn

MENISPERMACEAE

Cissampelos pareira, Linn

Cocculus hirsutus, (Linn) Diels

MORACEAE

Morus alba, Linn

M. indica, Linn

NYCTANTHACEAE

Nyctanthes arbor-tristis, Linn

OENOTHERACEAE

Oenothera rosea, W . Ait

OLEACEAE

Jasminum sambac, Ait

PAPAVERACEAE

Argemone mexicana, Linn

Papaver rhoeas, Linn

PASSIFLORACEAE

Passiflora foetida, Linn

PIPERACEAE

Peperomia pellucida, H.B.&K

POACEAE

Apluda mutica, L

Arthraxon lancifolius, (Trin) Hoclist

Arundinella nepalensis, Trin

Arundo donax, L

Bothriochloa ischaemum

B.paldhii, Stewart

Brachiaria ramosa, (L) Stapf

Chloris dolichostachya, Lagasca

Chrysopogon gryllus, Trin

C.serrulatus, Trin

Coix lachryma-jobi, Linn

Cymbopogon martinii, (Roxb) Wats

Cynodon dactylon, (L) Pers.

Dactyloctenium aegyptiacum, (L) Willd

Desmostachya bipinnata, Stapf

Dichanthium annulatum, (Forsk) Stapf

Digitaria sanguinalis, (L) Scop

Eleusine indica, Gaertn

Echinochloa colonum, L

Eragrostis uniloides, Nees

E.Viscosa, Trin

Hemarthria compressa, Kunth

Heteropogon contartus, L contartus, L.

Imperata cylindrica, (L) Beauv

Neyraudia arundinacea, (L) Hen

Oplismens burmannii, Beauv

O. Compositus, Beauv

Panicum miliare, Lamk

Paspalidum flavidum, (Retz) A

Paspalum distichum, Linn

P. scorbiculatum, Linn

Perotis indica, Retz.

Pogontherum crinitum, Trin

Polypogon fugax, Nees ex steud

Rotboellia exaltata, L.f

Saccharum spontaneum, Linn

Setaria glauca, Beauv

Sporobolus diander, Beauv

Vetiveria zizanioides, L Nash

POLYGONACEAE

Polygonum barbatum, Linn

P.plebejum, R.Br.

Rumex hastatus, D.Don

PORTULACACEAE

Portulaca grandiflora, Hook

RANUNCULACEAE

Clematis gouriana, Roxb.

Ranunculus muricatus, Tutin

RHAMNACEAE

Ziziphus mauritian, Lam.

ROSACEAE

Pyrus pashia, Buch-Ham ex D.Don

RUBIACEAE

Randia tetrasperma, (Roxb) Benth

Rubia cordifolia, Linn

Rubus paniculatus, Smith

Oldenlandia corymbosa, Hook f.

RUTACEAE

Murrya Koenigii, (L) Spreng

M. Paniculata, (L) Jack

SCHROPHULARIACEAE

Mazus pumilus, (Burm f) Steenis

Mecardonia procumbens, (Miller) Small

SOLANIACEAE

Physalis minima, Linn

Solanum hispidum, Pers

S.indicum, Linn

S.khasianum, Clarke

S.nigrum, Linn.

TILIACEAE

Corchorus aestuans, L

Helicteres isora, Linn

URTICACEAE

Broussonetia Papyrifera, Vent

Maclura cochinchinensis, (Lour) Corner

Urtica parviflora, Roxb

ERBENACEAE

Caryopteris odorata, (D.Don) Robinson

Clerodendron infortunatum, Linn

C.serratum, (L) Spreng

Lantana camara, Linn

Vitex negundo, Linn

ZINGIBERACEAE

Costus speciosus, (Koenig ex Retz) J.E.

ADIANTACEAE (FERN)

Adiantum caudatum, L

SINOPTERIDACEAE (FERN)

Cheilanthes farinosa, (Forsk) Kaulf.

THE INVERTEBRATES (Butterflies and Moths)

What are those blues, reds and yellows fluttering in the bushes? Yes, that is Colour on wings ! Butterflies are always a refreshing sight to watch with their beautifully coloured wings and fascinating patterns. As butterflies and moths are primarily dependent on plants as food source both as caterpillars and adults, the diverse vegetation in our campus supports quite a diversity of them.

There are 30 species of butterflies near the developed campus area alone. Many of them feed and lay eggs on **Lantana camara**, **Calotropis gigantea** and **Parthenium** . 16 species of Moths are recorded in the area without having to go out and look for them!

Butterflies:

1. *Papilo polytes romulus* Common Mormon
2. *Papilo demoleus demoleus* Lime
3. *Graphium sarpedon teredon* Common Bluebottle
4. *Graphium agamennon menids* Tailed Jay
5. *Leptosialiania nina nina* The Psyche
6. *Delias eucharis* Common Jezebel
7. *Cepora nerissa phryne* Common Gull
8. *Pieris rapae* Small Cabbage white
9. *Catopsilla pyranthe pyranthe* Mottled Emigrant
10. *Eurema blanda silhetana* Common Grass yellow
11. *Danius plexipus* The Common Tiger
12. *Danius chrysipus* The Plain Tiger
13. *Euploea core core* Common Indian crow
14. *Melianitis leda isemene* Evening Brown
15. *Ypthima huberniha* Common Fourring
16. *Neptis hylas varmona* Common Sailor
17. *Hepolimnas bolina* Great Eggfly

18. <i>Hepolimnas missipus</i>	Danaid Eggfly
19. <i>Kallima philarchus</i>	Blue Oakleaf
20. <i>Kallima inachus</i>	Orange Oakleaf
21. <i>Precis hierta hierta</i>	Yellow Pansy
22. <i>Precis orithya swinhoei</i>	Blue pansy
23. <i>Precis lemonias vaisya</i>	Lemon Pansy
24. <i>Precis iphita pluviatilis</i>	Chocolate pansy
25. <i>Vanessa cardui</i>	Painted Lady
26. <i>Argynnis hyperbius</i>	Indian fritillary
27. <i>Atela phalantha</i>	Common Leopard
28. <i>Telchinia violae</i>	Tawny Castor
29. <i>Zizeeria lysimon</i>	Dark glass blue
30. <i>Colias erate erate</i>	Pale Clouded Yellow

MOTHS:

- | | |
|---------------------------------|--------------------------------------|
| 1. <i>Spodoptera littoralis</i> | Egyptian cotton moth ,Leaf worm moth |
| 2. <i>Laothoe populi</i> | Poplar hawk moth |
| 3. <i>Deilephila elpenor</i> | Elephant hawk moth |
| 4. <i>Agathia arucuata</i> | |
| 5. <i>Phyle arcuosaris</i> | |
| 6. <i>Palpita unionalis</i> | |
| 7. <i>Maruca testylalis</i> | |
| 8. <i>Diaphania superalis</i> | |
| 9. <i>Pleurotypa ruralis</i> | Mother of pearl |
| 10. <i>Odezia dolabroria</i> | Chimney sweeper |
| 11. <i>Agathia succadanea</i> | |
| 12. <i>Antheraea spp.</i> | Tussore silk moth |
| 13. <i>Hippotion spp</i> | Silverstrip hawk moth |
| 14. <i>Amascata latinea</i> | |
| 15. <i>Diacrisia sannia</i> | Clouded buff |
| 16. <i>Ailanthus Silk moth</i> | Cynthia moth |

Snakes:

The snakes are no more the feared, creepy creatures. They have earned enough respect by the people who care to pick them up and study them. Lizards with their beautiful coloration have lured many into studying herpetofauna. And the turtles are no more considered as slow, passive and drab reptiles. People in the campus have so far recorded 7 species of snakes, two of them being poisonous. The fear and hatred for snakes vanishing slowly more species would be picked up in future.

- | | |
|---------------------------------|----------------------------------|
| 1. <i>Typhlina bramina</i> | Common worm snake or blind snake |
| 2. <i>Elaphe helena</i> | Trinket snake |
| 3. <i>Xenochrophis piscator</i> | Checkered keelback |
| 4. <i>Amphiesma stolata</i> | Buffstriped keelback |
| 5. <i>Boiga trigonata</i> | Indian gamma or Cat snake |
| 6. <i>Bungarus caeruleus</i> | Common Indian Krait |
| 7. <i>Naja naja</i> | Indian cobra |

Turtles:

Two species of turtles are found here which also breed in this area. The tricanate hill turtle is commonly found here and has been a subject of morphometric studies by the turtle freaks.

- | | |
|------------------------------------|---------------------------------|
| 1. <i>Melanochelys tricarinata</i> | Tricarinate hill turtle |
| 2. <i>Lissemys punctata</i> | Indian Mud or flap shell turtle |

Lizards:

A widely diversified group of reptiles, this group is not represented by many species, perhaps there is a need to check for them during the next summer.

<i>Hemidactylus brooki</i>	Brook's Gecko
<i>Hemidactylus flaviviridis</i>	Northern House Gecko
<i>Hemidactylus leschenaulti</i>	Bark gecko
<i>Calotes versicolor</i>	Common garden lizard

Skinks:

<i>Mabuya dissimilis</i>	Sand skink
--------------------------	------------

Two unidentified spp. of skinks

THE AVIFAUNA

Birdwatching is not a pastime in the campus - its an obsession. Binoculars (and of late mistnets) have become a fixture with strollers, joggers and sleepwalkers too. Craned necks and stares have sent many an eagle into a tizzy of self consciousness. But there is method in all this madness. A careful cataloguing of the avifauna, complete with captures and morphometric measurements are underway. Birding can be a pain in the neck but with a growing list, there's no greater happiness than putting one's feet up at night to the sound of the Longtailed Nightjar's 'chaunk'.

1. <i>Ardeola grayii</i>	POND HERON
2. <i>Egretta grazetta</i>	LITTLE EGRET
3. <i>Nycticorax nycticorax</i>	NIGHT HERON
4. <i>Bubulcus ibiis</i>	CATTLE EGRET
5. <i>Elanus caeruleus</i>	BLACKWINGED KITE
6. <i>Pernis ptilorhyncus</i>	HONEY BUZZARD
7. <i>Milvus migrans govinda</i>	PARIAH KITE
8. <i>Accipiter badius</i>	SHIKRA
9. <i>Sarcogyps calvus</i>	BLACK or KING VULTURE
10. <i>Gyps bengalensis</i>	INDIAN WHITEBACKED VULTURE
11. <i>Neophron percnopterus</i>	SCAVENGER VULTURE
12. <i>Circus aeruginosus</i>	MARSH HARRIER
13. <i>Falco tinnunculus</i>	KESTREL
14. <i>Francolinus francolinus</i>	BLACK PATRIDGE
15. <i>Francolinus pondicerianus</i>	GREY PATRIDGE
16. <i>Perdicula asiatica</i>	JUNGLE BUSH QUAIL
17. <i>Gallus gallus</i>	RED JUNGLEFOWL
18. <i>Amaurornis akool</i>	BROWN CRAKE
19. <i>Amaurornis phoenicurus</i>	WHITEBREASTED WATERHEN
20. <i>Vanellus indicus</i>	REDWATTLED LAPWING
21. <i>Tringa ochropus</i>	GREEN SANDPIPER
22. <i>Columba livia</i>	BLUEROCK PIGEON
23. <i>Streptopelia tranquebarica</i>	RED TURTLE DOVE
24. <i>Streptopelia chinensis</i>	SPOTTED DOVE
25. <i>Streptopelia senegalensis</i>	LITTLE BROWN DOVE
26. <i>Calcophaps indica</i>	EMERALD DOVE
27. <i>Psittacula eupatria</i>	ALEXANDRINE PARAKEET
28. <i>Psittacula krameri</i>	ROSERINGED PARAKEET
29. <i>Psittacula cyanocephala</i>	BLOSSOMHEADED PARAKEET
30. <i>Psittacula himalayana</i>	SLATYHEADED PARAKEET
31. <i>Clamator jacobinus</i>	PIED CRESTED CUCKOO
32. <i>Cuculus varius</i>	COMMON HAWK CUCKOO
33. <i>Cuculus micropterus</i>	INDIAN CUCKOO
34. <i>Cuculus canorus</i>	THE CUCKOO
35. <i>Cacomantis passerinus</i>	INDIAN PLAINTIVE CUCKOO
36. <i>Centropus sinensis</i>	CROW PHEASANT or COUCAL
37. <i>Bubo bubo</i>	GREAT HORNED OWL
38. <i>Glaucidium radiatum</i>	JUNGLE OWLET
39. <i>Athene brama</i>	SPOTTED OWLET
40. <i>Caprimulgus macrurus</i>	LONGTAILED NIGHTJAR
41. <i>Apus melba</i>	ALPINE SWIFT
42. <i>Apus affinis</i>	HOUSE SWIFT

- | | |
|---------------------------------------|---|
| 43. <i>Ceryle rudis</i> | LESSER PIED KINGFISHER |
| 44. <i>Alcedo atthis</i> | SMALL BLUE KINGFISHER |
| 45. <i>Halcyon smyrnensis</i> | WHITEBREASTED KINGFISHER |
| 46. <i>Merops philippinus</i> | BLUETAILED BEE-EATER |
| 47. <i>Merops orientalis</i> | GREEN BEE-EATER |
| 48. <i>Coracias bengalensis</i> | INDIAN ROLLER |
| 49. <i>Upupa epops</i> | HOOPOE |
| 50. <i>Tockus birostris</i> | COMMON GREY HORNBILL |
| 51. <i>Megalaima zeylanica</i> | LARGE GREEN BARBET |
| 52. <i>Megalaima asiatica</i> | BLUETHROATED BARBET |
| 53. <i>Megalaima haemacephala</i> | CRIMSONBREASTED BARBET |
| 54. <i>Micropternus brachyurus</i> | RUFOUS WOODPECKER |
| 55. <i>Picus myrmecophoneus</i> | LITTLE SCALYBELLIED
GREEN WOODPECKER |
| 56. <i>Picus chlorolophus</i> | SMALL YELLOWNAPED
WOODPECKER |
| 57. <i>Dinopium benghalense</i> | LESSER GOLDENBACKED
WOODPECKER |
| 58. <i>Picoides canicapillus</i> | GREYCROWNED PIGMY
WOODPECKER |
| 59. <i>Alauda arvensis</i> | SKYLARK |
| 60. <i>Hirundo rustica</i> | SWALLOW |
| 61. <i>Hirundo smithii</i> | WIRETAILED SWALLOW |
| 62. <i>Hirundo daur</i> | REDRUMPED SWALLOW |
| 63. <i>Lanius vittatus</i> | BAYBACKED SHRIKE |
| 64. <i>Lanius schach</i> | RUFOUSBACKED SHRIKE |
| 65. <i>Oriolus oriolus</i> | GOLDEN ORIOLE |
| 66. <i>Oriolus xanthornus</i> | BLACKHEADED ORIOLE |
| 67. <i>Dicrurus adismilis</i> | BLACK DRONGO |
| 68. <i>Dicrurus caerulescens</i> | WHITEBELLIED DRONGO |
| 69. <i>Dicrurus hottentottus</i> | HAIRCRESTED DRONGO |
| 70. <i>Sturnus malabaricus</i> | GREYHEADED MYNA |
| 71. <i>Sturnus pagodarum</i> | BRAHMINY MYNA |
| 72. <i>Sturnus contra</i> | PIED MYNA |
| 73. <i>Acridotheres tristis</i> | COMMON MYNA |
| 74. <i>Acridotheres fuscus</i> | JUNGLE MYNA |
| 75. <i>Dendrocita vagabunda</i> | INDIAN TREE PIE |
| 76. <i>Corvus splendens</i> | HOUSE CROW |
| 77. <i>Corvus macrorhynchos</i> | JUNGLE CROW |
| 78. <i>Hemipus picatus</i> | PIED FLYCATCHER-SHRIKE |
| 79. <i>Tephrodornis pondicerianus</i> | COMMON WOOD SHRIKE |
| 80. <i>Pericrocotus flammeus</i> | SCARLET MINIVET |
| 81. <i>Pericrocotus roseus</i> | ROSY MINIVET |
| 82. <i>Pericrocotus cinnamomeus</i> | SMALL MINIVET |
| 83. <i>Aegithina tiphia</i> | COMMON IORA |
| 84. <i>Pycnonotus atriceps</i> | BLACKHEADED BULBUL |
| 85. <i>Pycnonotus leucogenys</i> | WHITECHEEKED BULBUL |
| 86. <i>Pycnonotus cafer</i> | REDVENTED BULBUL |
| 87. <i>Pellorneum ruficeps</i> | SPOTTED BABBLER |
| 88. <i>Pomatorhinus erythrogyne</i> | RUSTYCHEEKED SCIMITAR
BABBLER |
| 89. <i>Rhopocichla atriceps</i> | BLACKHEADED BABBLER |
| 90. <i>Chrysomma sinense</i> | YELLOW EYED BABBLER |
| 91. <i>Turdoides caudatus</i> | COMMON BABBLER |
| 92. <i>Turdoides malcolmi</i> | LARGE GREY BABBLER |

93. <i>Turdoides striatus</i>	JUNGLE BABBLER
94. <i>Muscicapa striata</i>	SOOTY FLYCATCHER
95. <i>Muscicapa latirostris</i>	BROWN FLYCATCHER
96. <i>Muscicapa tickelliae</i>	TICKELL'S BLUE FLYCATCHER
97. <i>Rhipidura aureola</i>	WHITEBROWED FANTAIL FLYCATCHER
98. <i>Rhipidura albicollis</i>	WHITETHROATED FANTAIL FLYCATCHER
99. <i>Terpsiphone paradisi</i>	PARADISE FLYCATCHER
100. <i>Cettia montana</i>	STRONGFOOTED BUSH WARBLER
101. <i>Prinia hodgsonii</i>	FRANKLIN'S WREN-WARBLER
102. <i>Prinia socialis</i>	ASHY WREN-WARBLER
103. <i>Orthotomus sutorius</i>	TAILOR BIRD
104. <i>Acrocephalus dumetorum</i>	BLYTH'S REED WARBLER
105. <i>Sylvia communis</i>	WHITETHROAT
106. <i>Phylloscopus griseolus</i>	OLIVACEOUS LEAF WARBLER
107. <i>Phylloscopus trochiloides</i>	DULL GREEN LEAF WARBLER
108. <i>Phylloscopus occipitalis</i>	LARGE CROWNED LEAF WARBLER
109. <i>Phylloscopus reguloides</i>	BLYTH'S LEAF WARBLER
110. <i>Erithacus svecicus</i>	BLUETHROAT
111. <i>Copsychus saularis</i>	MAGPIE ROBIN
112. <i>Cercomela fusca</i>	BROWN ROCK CHAT
113. <i>Saxicola torquata</i>	STONE CHAT
114. <i>Saxicola caparata</i>	PIED BUSH CHAT
115. <i>Monticola solitarius</i>	BLUE ROCK THRUSH
116. <i>Parus major</i>	GREY TIT
117. <i>Anthus trivialis</i>	TREE PIPIT
118. <i>Motacilla alba</i>	PIED WAGTAIL
119. <i>Motacilla maderaspatensis</i>	LARGE PIED WAGTAIL
120. <i>Dicaeum agile</i>	THICKBILLED FLOWERPECKER
121. <i>Dicaeum erythrorhynchos</i>	TICKELL'S FLOWERPECKER
122. <i>Nectarinia asiatica</i>	PURPLE SUNBIRD
123. <i>Aethopyga siparaja</i>	YELLOW BACKED SUNBIRD
124. <i>Zosterops palpebrosa</i>	WHITE EYE
125. <i>Passer domesticus</i>	HOUSE SPARROW
126. <i>Petronia xanthocollis</i>	YELLOWTHROATED SPARROW
127. <i>Ploceus philippinus</i>	BAYA
128. <i>Ploceus manyar</i>	STREAKED WEAVER BIRD
129. <i>Estrilda amandava</i>	RED MUNIA
130. <i>Lonchura striata</i>	WHITEBACKED MUNIA
131. <i>Lonchura punctulata</i>	SPOTTED MUNIA
132. <i>Carduelis spinoides</i>	HIMALAYAN GREENFINCH
133. <i>Carpodacus erythrinus</i>	COMMON ROSEFINCH
134. <i>Prinia gracilis</i>	STREAKED WREN WARBLER
135. <i>Certhia familiaris</i>	TREE CREEPER

THE MAMMALS

The yelps of jackals, the bark of a Muntjac and the pugmarks of a leopard never fail to get the adrenalin of a wildlifer streaming. If the grass is greener on the other side of the fence, what are these animals doing here? We haven't seen any jumping jackasses yet, or have we? With an increasing interest in the mammals of the campus, there has been an increase in the number of torch bearing strollers. But judging from the length of the list, the number is still small.

Macaca mulatta

Panthera pardus

Felis chaus

Viverricula indica

Herpestes edwardsi

Canis aureus

Pipistrellus coromandra

Hystrix indica

Lepus nigricollis ruficaudatus

Axis axis

Muntiacus muntjak

Sus scrofa

Rhesus Macaque

Leopard

Jungle Cat

Small Indian Civet

Common Mongoose

Jackal

Indian Pipistrelle

Indian Porcupine

Rufoustailed Hare

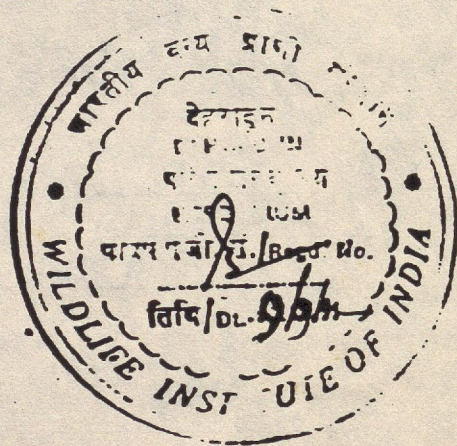
Chital

Barking Deer

Indian Wild Boar

WILDLIFE INSTITUTE OF INDIA
HERBARIUM

Check list of Flora of Chandrabani.



next

The Preliminary check List of Flora of Chandrabani

Clematis gouriana, Roxb. (Ranunculaceae)

Ranunculus muricatus, Tutin "

Cissampelos pareira, Linn (Menispermaceae)

Cocculus hirsutus, (Linn) Diels "

Argemone mexicana, Linn (Papaveraceae)

Papaver rhoeas, Linn "

Brassica juncea, (L) Czern & Coss (Brassicaceae)

Capsella bursa-pastoris, Moench. "

Xylosma longifolia, Clos (Bixaceae)

Casaria elliptica, Willd (Flacourtiaceae)

Flacourtia indica, Merr "

Portulaca grandiflora, Hook. (Portulacaceae)

Shorea robusta, Gaertn. f. (Dipterocarpaceae)

Abelmoschus esculentus, (L.) Moench (Malvaceae)

Lazania lampas, (Cav.) Alex.

Sida acuta, Burm. "

S. humilis, Willd. "

S. cordifolia, Linn. "

Urena lobata, Linn. "

Cochorus aestuans, L (Tiliaceae)

Helicteres isora, Linn "

Biophytum sensitivum, (Linn) DC. (Geraniaceae)

Geranium lucidum, Linn "

Murraya koenigii, (L) Spreng (Rutaceae)

M. paniculata, (L) Jack. "

Melia azedarach, Linn (Meliaceae)

Jasminum sambac, Ait (Oleaceae)

Celastrus paniculata, Willd (Celastraceae)

Ziziphus mauritiana, Lam (Rhamnaceae)

Leea asiatica, (L) Ridsdale (Leeaceae)

Ampelocissus latifolia, (Roxb) Planch. "

Crotalaria albida, Heyne (Fabaceae)

C. serica, Retz. "

Desmodium gangeticum (Linn) D.C. "

D. pulchellum (Linn) Benth "

Flemingia macrophylla, Willd & Ktze

F. strobilifera, (L) R.Br.

Melilotus indica, (Linn) All

Neplunia triquetra, Benth (Fabaceae)
Sesbania bipinosa, L
Zornia zibosa, Spreng.
Cassia occidentalis, Linn (Caesalpinaceae)
C. lota Linn "

Mimosa himalayana, Gamble (Mimosaceae)
Rhus pashia, Buch-Ham ex D. Don (Rosaceae)
Lawsonia alba, Lamk (Lythraceae)
Wendlandia exserta, (Roxb) DC. "
Oenothera rosea, W. Ait (Oenotheraceae)
Passiflora foetida, Linn (Passifloraceae)
Trichosanthes cucumerina, L (Cucurbitaceae)
Centella asiatica, (L) Urb. (Apiaceae)
Randia tetrasperma, (Roxb) Benth (Rubiaceae)
Rubia cordifolia, Linn "
Rubus paniculatus, Smith "
Oldenlandia corymbosa, Hook. f. "
~~Wendlandia exserta, (Roxb) DC.~~
Acanthospermum hispidum, DC. (Asteraceae)
Ageratum conyzoides, Linn. "

Artemisia parviflora, Buch-Ham (Asteraceae)

Bidens pilosa, Linn "

Bainvillea acmella (L.) Philipson "

Blumea lacera,

Caessulia axillaris, Roxb. "

Centipeda minima (L.) A. Br & Aschers "

Colula hemispherica, Wall ex Benth & Hook. "

Emilia sonchifolia, (L.) DC. "

Eupatorium adenophorum, Spreng "

Inaphalium polycaulon, Pers "

Siegesbeckia orientalis, Linn "

Vicia indica, (Linn) DC. "

Carissa carandas, L (Apocynaceae)

C. opaca Stapf. "

Holarthena antidysenterica, Wall. "

Ichnocarpus frutescens, Br "

Rauwolfia serpentina, Benth "

Vallaris Solanacea, O. Kuntze "

Wrightia lomentosa, Roem & Sch. "

Calotropis procera, (Willd) Dry & ex W. Ait (Asclepiadaceae)

Trichodesma indicum, R. Br. (Borraginaceae)

Ehretia laevis, Roxb. "

Convolvulus arvensis, Linn (Convolvulaceae)

Evolvulus numularius, Linn. "

Physalis minima, Linn (Solaniaceae)

Solanum hispidum, Pers. "

S. indicum, Linn. "

S. khasianum, Clarke "

S. nigrum, Linn. "

Mazus pumilus, (Burm. f.) Steenis (Schrophulariaceae)

Meibomia procumbens, (Miller) Small. "

Barleria cristata, Linn (Acanthaceae)

Dicliptera bulbocaulis, Nees "

Justicia adhatoda, Linn. "

J. peploides, (Nees) Clarke "

Rungia pectinata (Linn) Nees. "

Caryopteris odorata, (D. Don) Robinson (Verbenaceae)

Clerodendron infortunatum, Linn. "

C. serratum, (L.) Spreng. "

Lantana camara, Linn (Verbonaceae)

Vilox negundo, Linn "

Anisomeles indica, (L) O. Kuntze (Lamiaceae)

A. ovala, R.Br. "

Callicarpa macrophylla, Vahl. "

Coleus forskohlii (Willd) Briq. "

Perilla fruticosa, N. Don. "

Plectranthus japonicus (Burm f.) Koich. "

Nyctanthes arbor-tristis, Linn (Nyctanthaceae)

Achyranthes aspera, W. Ait (Amaranthaceae)

Aerva sanguinolenta, (L) Bl. "

A. scandens, Wall ex Moq. "

Alternanthera pugens, H.B.K. "

A. sessilis, (L) R.Br. ex DC. "

Amaranthus spinosus, Linn "

A. tricolor, Linn "

A. viridis, Linn "

Gomphrena celosioides, Mart. "

Chenopodium ambrosioides, Linn (Chenopodiaceae)

Polygonum barbatum, Linn (Polygonaceae)

P. plebeium, R.Br. "

Rumex hastatus, D. Don. "

Peperomia pellucida, H.B. & K. (Piperaceae)

Jatropha curcans, DC. (Euphorbiaceae)

Mallotus philipensis, Muell-Arg. "

Phyllanthus urinaria, Linn. "

Pultanea Roxburghii, Wall. "

Securinga virosa, (Roxb) Ballion "

Morus alba, Linn (Moraceae)

M. indica, Linn.

Broussonetia papyrifera, Vent (Urticaceae)

Maclura cochinchinensis, (Lour) Cornu "

Urtica parviflora, Roxb. "

Dioscorea bulbifera, Linn (Dioscoreaceae)

D. pentaphylla, Linn. "

D. sativa, Thunb. "

Asparagus adscendens, (Roxb) (Liliaceae)

Commelina diffusa, Burm. f. (Commelinaceae)

cynotis fasciculata, Schult. "

• Colocasia antiquorum, Schott (Araceae)

Coslus speciosus, (Koenig ex Rehb.) J.E.
(Zingiberaceae)

Adiantum caudatum (Adiantaceae)

Cheilanthes farinosa (Forsk) Kaulf.
(Sinopletericaceae)

Fimbristylis dichotoma, (L.) Vahl (Cyperaceae)

Cyperus difformis, L

C. cyperoides, (Linn) O.Klze

C. nulans, Vahl

C. compressus, Linn

C. rotundus, Linn

C. pumilus,

C. iria, L.

Apluda mutica, L (Poaceae)
Arthraxon lancifolius (Trin) Hochst
Mundinella nepalensis, Trin
Aundo donax, L
Poltrichloa ischaemum
B. paldani, Stewart
Brachiaria latnosa, (L.) Stapf
Chloris dolichostachya, Lagasca
Chrysopogon gryllus, Trin
C. serrulatus, Trin
Coix lachyria-jobi, Linn
Cymbopogon martinii (Roxb) Walp
Cynodon dactylon, (L.) Pers
Dactyloctenium aegyptiacum, (L.) Willd.
Nesimastachya bipinnata, Stapf
Dichanthium annulatum (Forsk) Stapf
Digitaria sanguinalis (L) Scop
Elettaria indica, Gaertn
Echinochloa colonum, L.
Liagostis culioides, Nees
E. viscosa, Trin
Hemarthria compressa, Kunth

Heliotropium contortus, L.
Imperata cylindrica (L.) Beauv.
Neyraudia arundinacea, (L.) Henr.
Oplismenus hurmannii, Beauv.
O. compositus, Beauv.
Panicum miliare, Lamk.
Paspalum flavidum, (Retz) A.
Paspalum distichum, Linn.
P. scorticulatum, Linn.
Perotis indica, Retz.
Pogontherum cinereum, Trin.
Polypogon sugax, Nees ex Steud.
Rolobellia axillata, L. f.
Saccharum spontaneum, Linn.
Setaria glauca, Beauv.
Sporobolus diander, Beauv.
Veliveria zizanioides, L. Nash.

The preliminary check list is prepared on the basis of collection. The collection work is going on and final check list will be prepared after completion of the collection.

Prepared by P.L. Saklani
Herbarium Asstt.

THE VEGETATION

This checklist of vegetation is prepared on the basis of collections since March 1992. The final checklist will be prepared after completion of the collections. All collections are from Chandrabani and represent most of the common or characteristic tree, shrub, herb, climbers, sedges, grass and fern. The list (185 species in 152 genera, in 54 families). The list is arranged alphabetically into families.

ACANTHACEAE

- Barleria cristata*, Linn
- Dicliptera bulpleuroides*, Nees
- Justicia adhatoda*, Linn
- J. peploides*, (Nees) Clarke
- Rungia pectinata*, (Linn) Nees

AMARANTHACEAE

- Achyranthes aspera*, W Ait
- Aerva sanguinolenta*, (L) Bl.
- A.scandens*, Wall ex Moq
- Alternanthera pugens*, H.B.K.
- A.sessilis*, (L) R.Br.ex DC
- Amaranthus spinosus*, Linn
- A.tricolor*, Linn
- A.Viridis*, Linn
- Gomphrena celosioides*, Mart

APIACEAE

- Centella asiatica*, (L) Urb

APOCYNACEAE

- Carissa carandas*, L
- C. opaca*, Stapf.
- Holarrhena antidysenterica*, Wall
- Ichnocarpus frutescens*, Br
- Rauwolfia serpentina*, Benth
- Vallis solanacea*, O.Kuntze
- Wrightia tomentosa*, Roem & Sch.

ARACEAE

- Colocasia antiquorum*, Schult

ASCLEPIADACEAE

- Calotropis procera*, (Willd) Dry & ex W. Ait

ASTERACEAE

- Acanthospermum hispidum*, DC
Ageratum conyzoides, Linn
Artemisia parviflora, Buch-Ham
Bidens pilosa, Linn
Blainvillea acmella, (L) Philipson
Blumea lacera, DC
Caessulia axillaris, Roxb.
Centipeda minima, (L) A.Br.& Asch
Cotula Hemisphaerica, Wall ex Benth
Emilia sonchifolia, (L) DC
Eupatorium adenophorum, spreng
Gnaphalium polycaulon, Pers
Siegesbeckia orientalis, Linn
Vicoa indica, (Linn) DC

BORAGINACEAE

- Ehretia laevis*, Roxb
Trichodesma indicum, R.Br.

BIXACEAE

- Xylosma longifolia*, clos

BRASSICACCAE

- Brassica juncea*, (L) czern & coss
Capsella bursa-pastoris, Moench

CELASTERACEAE

- Celastrus paniculata*, Willd

HENOPODIACEAE

- Chenopodium ambrosioides*, Linn

COMMELINACEAE

- Commelina diffusa*, Burm.f.
Cynotis fasciculata, Schult

CONVOLVULACEAE

- Convolvulus arvensis*, Linn
Evolvulus nummularius, Linn

CUCURBITACEAE

- Trichosanthes cucumerian*, L

CYPERACEAE

- Cyperus Compressus*, Linn
C. cyperoides, (Linn) O.Ktz
C. difformis, L
C. iria, L
C.nutans, Vahl
C.pumilus, L
C.rotandus, Linn
Fimbristylis dichotoma, (L) Vahl

DIOSCOREACEAE

- Dioscorea bulbifera*, Linn
D.pentaphylla, Linn
D.sativa, Thumb

DIPTEROCARPACEAE

- Shorea robusta*, Gaertn f

EUPHORBIACEAE

- Jatropha curcans*, DC
Mallotus philipensis, Muell-Arg
Phyllanthus urinaria, Linn
Putranjiva roxburghii, Wall
Securinega Virosa, (Roxb) Ballion

FLACOURTIACEAE

- Casearia elliptica*, willd
Flacourtia indica, merr

GERANIACEAE

- Biophytum sensitivum*, (Linn) DC
Geranium lucidum, Linn

LAMIACEAE

- Anisomeles indica*, (L) O. Kuntze
A. ovata, R.Br.
Callicarpa macrophylla, Vahl.
Perilla fruticosa, D.Don
Plectranthus japonicus, (Burm f) Koidz

LEEACEAE

- Leea asiatica*, (L) Ridsdale
Ampelocissus latifolia, (Roxb) Planch

LEGUM-FABACEAE

- Crotalaria albida*, Heyne
C. sericea, Retz.
Desmodium gangeticum, (Linn) DC.
D.pulchellum, (Linn) Benth
Flemingia macrophylla, Willd & Ktze
F. Strobilifera, (L) R.Br.
Melilotus indica, (Linn) All
Neptunia triquetra, Benth
Sesbania bipinosa, L
Zornia zibosa, Spreng

LEGUM-CAESALPINIACEAE

- Cassia occidentalis*, Linn
C. tora, Linn

LEGUM-MIMOSACEAE

- Mimosa himalayana*, Gamble
M.pudica, L

LILIACEAE

- Asparagus adscendens*, (Roxb)

LYTHRACEAE

- Lawsonia alba*, Lamk
Wendlandia exserta, (Roxb) DC

MALVACEAE

Abelmoschus esculentus, (L) Moench

Lazanza lampas, (Cav) Alex

Sida acuta, Burm

S. Cordifolia, Linn

S.humilis, Wild

Urena lobata, Linn

MELIACEAE

Melia azeadarach, Linn

MENISPERMACEAE

Cissampelos pareira, Linn

Cocculus hirsutus, (Linn) Diels

MORACEAE

Morus alba, Linn

M.indica, Linn

NYCTANTHACEAE

Nyctanthes arbor-tristis, Linn

OENOTHERACEAE

Oenothera rosea, W . Ait

OLEACEAE

Jasminum sambac, Ait

PAPAVERACEAE

Argemone mexicana, Linn

Papaver rhoeas, Linn

PASSIFLORACEAE

Passiflora foetida, Linn

PIPERACEAE

Peperomia pellucida, H.B.&K

POACEAE

Apluda mutica, L

Arthraxon lancifolius, (Trin) Hoclif

Arundinella nepalensis, Trin

Arundo donax, L

Bothriochloa ischaemum

B.paldhii, Stewart

Brachiaria ramosa, (L) Stapf

Chloris dolichostachya, Lagasca

Chrysopogon gryllus, Trin

C.serrulatus, Trin

Coix lachryma-jobi, Linn

Cymbopogon martinii, (Roxb) Wats

Cynodon dactylon, (L) Pers.

Dactyloctenium aegyptiacum, (L) Willd

Desmostachya bipinnata, Stapf

Dichanthium annulatum, (Forsk) Stapf

Digitaria sanguinalis, (L) Scop

Eleusine indica, Gaertn

Echinochloa colonum, L

Eragrostis uniloides, Nees

E.Viscosa, Trin

Hemarthria compressa, Kunth

Heteropogon contartus, L *contartus*, L.

Imperata cylindrica, (L) Beauv

Neyraudia arundinacea, (L) Hen

Oplismens burmannii, Beauv

O. Compositus, Beauv

Panicum miliare, Lamk

Paspalidum flavidum, (Retz) A

Paspalum distichum, Linn

P. scorbiculatum, Linn

Perotis indica, Retz.

Pogontherum crinitum, Trin

Polypogon fugax, Nees ex steud

Rotboellia exaltata, L.f

Saccharum spontaneum, Linn

Setaria glauca, Beauv

Sporobolus diander, Beauv

Vetiveria zizanioides, L Nash

POLYGONACEAE

Polygonum barbatum, Linn

P.plebejum, R.Br.

Rumex hastatus, D.Don

PORTULACACEAE

Portulaca grandiflora, Hook

RANUNCULACEAE

Clematis gouriana, Roxb.

Ranunculus muricatus, Tutin

RHAMNACEAE

Ziziphus mauritian, Lam.

ROSACEAE

Pyrus pashia, Buch-Ham ex D.Don

RUBIACEAE

Randia tetrasperma, (Roxb) Benth

Rubia cordifolia, Linn

Rubus paniculatus, Smith

Oldenlandia corymbosa, Hook f.

RUTACEAE

Murrya Koenigii, (L) Spreng

M. Paniculata, (L) Jack

SCHROPHULARIACEAE

Mazus pumilus, (Burm f) Steenis

Mecardonia procumbens, (Miller) Small

SOLANIACEAE

Physalis minima, Linn

Solanum hispidum, Pers

S.indicum, Linn

S.khasianum, Clarke

S.nigrum, Linn.

TILIACEAE

Corchorus aestuans, L

Helicteres isora, Linn

URTICACEAE

Broussonetia Papyrifera, Vent

Maclura cochinchinensis, (Lour) Corner

Urtica parviflora, Roxb

ERBENACEAE

Caryopteris odorata, (D.Don) Robinson

Clerodendron infortunatum, Linn

C.serratum, (L) Spreng

Lantana camara, Linn

Vitex negundo, Linn

ZINGIBERACEAE

Costus speciosus, (Koenig ex Retz) J.E.

ADIANTACEAE (FERN)

Adiantum caudatum, L

SINOPTERIDACEAE (FERN)

Cheilanthes farinosa, (Forsk) Kaulf.

THE INVERTEBRATES (Butterflies and Moths)

What are those blues, reds and yellows fluttering in the bushes? Yes, that is Colour on wings ! Butterflies are always a refreshing sight to watch with their beautifully coloured wings and fascinating patterns. As butterflies and moths are primarily dependent on plants as food source both as caterpillars and adults, the diverse vegetation in our campus supports quite a diversity of them.

There are 30 species of butterflies near the developed campus area alone. Many of them feed and lay eggs on **Lantana camara**, **Calotropis gigantea** and **Parthenium** . 16 species of Moths are recorded in the area without having to go out and look for them!

Butterflies:

- | | |
|--|---------------------|
| 1. <i>Papilo polytes romulus</i> | Common Mormon |
| 2. <i>Papilo demoleus demoleus</i> | Lime |
| 3. <i>Graphium sarpedon teredon</i> | Common Bluebottle |
| 4. <i>Graphium agamennon menids</i> | Tailed Jay |
| 5. <i>Leptosialiana nina nina</i> | The Psyche |
| 6. <i>Delias eucharis</i> | Common Jezebel |
| 7. <i>Cepora nerissa phryne</i> | Common Gull |
| 8. <i>Pieris rapae</i> | Small Cabbage white |
| 9. <i>Catopsilla pyranthe pyranthe</i> | Mottled Emigrant |
| 10. <i>Eurema blanda silhetana</i> | Common Grass yellow |
| 11. <i>Danius plexipus</i> | The Common Tiger |
| 12. <i>Danius chrysipus</i> | The Plain Tiger |
| 13. <i>Euploea core core</i> | Common Indian crow |
| 14. <i>Melianitis leda isemene</i> | Evening Brown |
| 15. <i>Ypthima huberhiha</i> | Common Fourring |
| 16. <i>Neptis hylas varmona</i> | Common Sailor |
| 17. <i>Hepolimnas bolina</i> | Great Eggfly |

18. <i>Hepolimnas missipus</i>	Danaid Eggfly
19. <i>Kallima philarchus</i>	Blue Oakleaf
20. <i>Kallima inachus</i>	Orange Oakleaf
21. <i>Precis hierta hierta</i>	Yellow Pansy
22. <i>Precis orithya swinhoei</i>	Blue pansy
23. <i>Precis lemonias vaisya</i>	Lemon Pansy
24. <i>Precis iphita pluviatilis</i>	Chocolate pansy
25. <i>Vanessa cardui</i>	Painted Lady
26. <i>Argynnis hyperbius</i>	Indian fritillary
27. <i>Atela phalantha</i>	Common Leopard
28. <i>Telchinia violae</i>	Tawny Castor
29. <i>Zizeeria lysimon</i>	Dark glass blue
30. <i>Colias erate erate</i>	Pale Clouded Yellow

MOTHS:

1. <i>Spodoptera littoralis</i>	Egyptian cotton moth ,Leaf worm moth
2. <i>Laothoe populi</i>	Poplar hawk moth
3. <i>Deilephila elpenor</i>	Elephant hawk moth
4. <i>Agathia arucuata</i>	
5. <i>Phyle arcuosaris</i>	
6. <i>Palpita unionalis</i>	
7. <i>Maruca testylalis</i>	
8. <i>Diaphania superalis</i>	
9. <i>Pleurotypa ruralis</i>	Mother of pearl
10. <i>Odezia dolabroria</i>	Chimney sweeper
11. <i>Agathia succadanea</i>	
12. <i>Antheraea spp.</i>	Tussore silk moth
13. <i>Hippotion spp</i>	Silverstrip hawk moth
14. <i>Amascata latinea</i>	
15. <i>Diacrisia sannia</i>	Clouded buff
16. <i>Ailanthus Silk moth</i>	Cynthia moth

**THE HERPETOFAUNA
(AMPHIBIANS AND REPTILES)**

A night stroll around the campus- and you will know that you are not alone.... incessant calls of toads and frogs keeps you company. The habitat is suitable for the amphibians as there are rainfed pools of water and bushes for the tree frogs. Morphometric measurements and breeding patterns of eleven species of frogs and toads just near the hostel area and the tree frog *Rhachophorus taeniatus* nest are the interesting findings.

Frogs and toads:

1. *Bufo stomaticus*

2. *Bufo melanostictus*

3. *Microhyla ornata*

Narrow mouth frog

4. *Rana crassa*(?)

5. *Rana cyanophlyctis*

The skipper frog

6. *Rana tigrina*

The bull frog

7. *Tomopterna breviceps*

The burrowing frog

8. *Rhachophorus taeniatus*

The tree frog

9. *Uperodon systoma*

The ballon frog

10. Two unidentified spp.(?)

Snakes:

The snakes are no more the feared, creepy creatures. They have earned enough respect by the people who care to pick them up and study them. Lizards with their beautiful coloration have lured many into studying herpetofauna. And the turtles are no more considered as slow, passive and drab reptiles. People in the campus have so far recorded 7 species of snakes, two of them being poisonous. The fear and hatred for snakes vanishing slowly more species would be picked up in future.

- | | |
|---------------------------------|----------------------------------|
| 1. <i>Typhlina bramina</i> | Common worm snake or blind snake |
| 2. <i>Elaphe helena</i> | Trinket snake |
| 3. <i>Xenochrophis piscator</i> | Checkered keelback |
| 4. <i>Amphiesma stolata</i> | Buffstriped keelback |
| 5. <i>Boiga trigonata</i> | Indian gamma or Cat snake |
| 6. <i>Bungarus caeruleus</i> | Common Indian Krait |
| 7. <i>Naja naja</i> | Indian cobra |

Turtles:

Two species of turtles are found here which also breed in this area. The tricanate hill turtle is commonly found here and has been a subject of morphometric studies by the turtle freaks.

- | | |
|------------------------------------|---------------------------------|
| 1. <i>Melanochelys tricarinata</i> | Tricarinate hill turtle |
| 2. <i>Lissemys punctata</i> | Indian Mud or flap shell turtle |

Lizards:

A widely diversified group of reptiles, this group is not represented by many species, perhaps there is a need to check for them during the next summer.

<i>Hemidactylus brooki</i>	Brook's Gecko
<i>Hemidactylus flaviviridis</i>	Northern House Gecko
<i>Hemidactylus leschenaulti</i>	Bark gecko
<i>Calotes versicolor</i>	Common garden lizard

Skinks:

<i>Mabuya dissimilis</i>	Sand skink
--------------------------	------------

Two unidentified spp. of skinks

THE AVIFAUNA

Birdwatching is not a pastime in the campus - its an obsession. Binoculars (and of late mistnets) have become a fixture with strollers, joggers and sleepwalkers too. Craned necks and stares have sent many an eagle into a tizzy of self consciousness. But there is method in all this madness. A careful cataloguing of the avifauna, complete with captures and morphometric measurements are underway. Birding can be a pain in the neck but with a growing list, there's no greater happiness than putting one's feet up at night to the sound of the Longtailed Nightjar's 'chaunk'.

1. <i>Ardeola grayii</i>	POND HERON
2. <i>Egretta grazetta</i>	LITTLE EGRET
3. <i>Nycticorax nycticorax</i>	NIGHT HERON
4. <i>Bubulcus ibiis</i>	CATTLE EGRET
5. <i>Elanus caeruleus</i>	BLACKWINGED KITE
6. <i>Pernis ptilorhyncus</i>	HONEY BUZZARD
7. <i>Milvus migrans govinda</i>	PARIAH KITE
8. <i>Accipiter badius</i>	SHIKRA
9. <i>Sarcogyps calvus</i>	BLACK or KING VULTURE
10. <i>Gyps bengalensis</i>	INDIAN WHITEBACKED VULTURE
11. <i>Neophron percnopterus</i>	SCAVENGER VULTURE
12. <i>Circus aeruginosus</i>	MARSH HARRIER
13. <i>Falco tinnunculus</i>	KESTREL
14. <i>Francolinus francolinus</i>	BLACK PATRIDGE
15. <i>Francolinus pondicerianus</i>	GREY PATRIDGE
16. <i>Perdicula asiatica</i>	JUNGLE BUSH QUAIL
17. <i>Gallus gallus</i>	RED JUNGLEFOWL
18. <i>Amaurornis akool</i>	BROWN CRAKE
19. <i>Amaurornis phoenicurus</i>	WHITEBREASTED WATERHEN
20. <i>Vanellus indicus</i>	REDWATTLED LAPWING
21. <i>Tringa ochropus</i>	GREEN SANDPIPER
22. <i>Columba livia</i>	BLUEROCK PIGEON
23. <i>Streptopelia tranquebarica</i>	RED TURTLE DOVE
24. <i>Streptopelia chinensis</i>	SPOTTED DOVE
25. <i>Streptopelia senegalensis</i>	LITTLE BROWN DOVE
26. <i>Calcophaps indica</i>	EMERALD DOVE
27. <i>Psittacula eupatria</i>	ALEXANDRINE PARAKEET
28. <i>Psittacula krameri</i>	ROSERINGED PARAKEET
29. <i>Psittacula cyanocephala</i>	BLOSSOMHEADED PARAKEET
30. <i>Psittacula himalayana</i>	SLATYHEADED PARAKEET
31. <i>Clamator jacobinus</i>	PIED CRESTED CUCKOO
32. <i>Cuculus varius</i>	COMMON HAWK CUCKOO
33. <i>Cuculus micropterus</i>	INDIAN CUCKOO
34. <i>Cuculus canorus</i>	THE CUCKOO
35. <i>Cacomantis passerinus</i>	INDIAN PLAINTIVE CUCKOO
36. <i>Centropus sinensis</i>	CROW PHEASANT or COUCAL
37. <i>Bubo bubo</i>	GREAT HORNED OWL
38. <i>Glaucidium radiatum</i>	JUNGLE OWLET
39. <i>Athene brama</i>	SPOTTED OWLET
40. <i>Caprimulgus macrurus</i>	LONGTAILED NIGHTJAR
41. <i>Apus melba</i>	ALPINE SWIFT
42. <i>Apus affinis</i>	HOUSE SWIFT

- | | |
|---------------------------------------|---|
| 43. <i>Ceryle rudis</i> | LESSER PIED KINGFISHER |
| 44. <i>Alcedo atthis</i> | SMALL BLUE KINGFISHER |
| 45. <i>Halcyon smyrnensis</i> | WHITEBREASTED KINGFISHER |
| 46. <i>Merops philippinus</i> | BLUETAILED BEE-EATER |
| 47. <i>Merops orientalis</i> | GREEN BEE-EATER |
| 48. <i>Coracias bengalensis</i> | INDIAN ROLLER |
| 49. <i>Upupa epops</i> | HOOPOE |
| 50. <i>Tockus birostris</i> | COMMON GREY HORNBILL |
| 51. <i>Megalaima zeylanica</i> | LARGE GREEN BARBET |
| 52. <i>Megalaima asiatica</i> | BLUETHROATED BARBET |
| 53. <i>Megalaima haemacephala</i> | CRIMSONBREASTED BARBET |
| 54. <i>Micropternus brachyurus</i> | RUFOUS WOODPECKER |
| 55. <i>Picus myrmecophoneus</i> | LITTLE SCALYBELLIED
GREEN WOODPECKER |
| 56. <i>Picus chlorolophus</i> | SMALL YELLOWNAPED
WOODPECKER |
| 57. <i>Dinopium benghalense</i> | LESSER GOLDENBACKED
WOODPECKER |
| 58. <i>Picoides canicapillus</i> | GREYCROWNED PIGMY
WOODPECKER |
| 59. <i>Alauda arvensis</i> | SKYLARK |
| 60. <i>Hirundo rustica</i> | SWALLOW |
| 61. <i>Hirundo smithii</i> | WIRETAILED SWALLOW |
| 62. <i>Hirundo daur</i> | REDRUMPED SWALLOW |
| 63. <i>Lanius vittatus</i> | BAYBACKED SHRIKE |
| 64. <i>Lanius schach</i> | RUFOUSBACKED SHRIKE |
| 65. <i>Oriolus oriolus</i> | GOLDEN ORIOLE |
| 66. <i>Oriolus xanthornus</i> | BLACKHEADED ORIOLE |
| 67. <i>Dicrurus adismilis</i> | BLACK DRONGO |
| 68. <i>Dicrurus caerulescens</i> | WHITEBELLIED DRONGO |
| 69. <i>Dicrurus hottentottus</i> | HAIRCRESTED DRONGO |
| 70. <i>Sturnus malabaricus</i> | GREYHEADED MYNA |
| 71. <i>Sturnus pagodarum</i> | BRAHMINY MYNA |
| 72. <i>Sturnus contra</i> | PIED MYNA |
| 73. <i>Acridotheres tristis</i> | COMMON MYNA |
| 74. <i>Acridotheres fuscus</i> | JUNGLE MYNA |
| 75. <i>Dendrocitta vagabunda</i> | INDIAN TREE PIE |
| 76. <i>Corvus splendens</i> | HOUSE CROW |
| 77. <i>Corvus macrorhynchos</i> | JUNGLE CROW |
| 78. <i>Hemipus picatus</i> | PIED FLYCATCHER-SHRIKE |
| 79. <i>Tephrodornis pondicerianus</i> | COMMON WOOD SHRIKE |
| 80. <i>Pericrocotus flammeus</i> | SCARLET MINIVET |
| 81. <i>Pericrocotus roseus</i> | ROSY MINIVET |
| 82. <i>Pericrocotus cinnamomeus</i> | SMALL MINIVET |
| 83. <i>Aegithina tiphia</i> | COMMON IORA |
| 84. <i>Pycnonotus atriceps</i> | BLACKHEADED BULBUL |
| 85. <i>Pycnonotus leucogenys</i> | WHITECHEEKED BULBUL |
| 86. <i>Pycnonotus cafer</i> | REDVENTED BULBUL |
| 87. <i>Pellorneum ruficeps</i> | SPOTTED BABBler |
| 88. <i>Pomatorhinus erythrogyne</i> | RUSTYCHEEKED SCIMITAR
BABBler |
| 89. <i>Rhopocichla atriceps</i> | BLACKHEADED BABBler |
| 90. <i>Chrysomma sinense</i> | YELLOW EYED BABBler |
| 91. <i>Turdoides caudatus</i> | COMMON BABBler |
| 92. <i>Turdoides malcolmi</i> | LARGE GREY BABBler |

93. <i>Turdoides striatus</i>	JUNGLE BABBLER
94. <i>Muscicapa striata</i>	SOOTY FLYCATCHER
95. <i>Muscicapa latirostris</i>	BROWN FLYCATCHER
96. <i>Muscicapa tickelliae</i>	TICKELL'S BLUE FLYCATCHER
97. <i>Rhipidura aureola</i>	WHITEBROWED FANTAIL FLYCATCHER
98. <i>Rhipidura albicollis</i>	WHITETHROATED FANTAIL FLYCATCHER
99. <i>Terpsiphone paradisi</i>	PARADISE FLYCATCHER
100. <i>Cettia montana</i>	STRONGFOOTED BUSH WARBLER
101. <i>Prinia hodgsonii</i>	FRANKLIN'S WREN-WARBLER
102. <i>Prinia socialis</i>	ASHY WREN-WARBLER
103. <i>Orthotomus sutorius</i>	TAILOR BIRD
104. <i>Acrocephalus dumetorum</i>	BLYTH'S REED WARBLER
105. <i>Sylvia communis</i>	WHITETHROAT
106. <i>Phylloscopus griseolus</i>	OLIVACEOUS LEAF WARBLER
107. <i>Phylloscopus trochiloides</i>	DULL GREEN LEAF WARBLER
108. <i>Phylloscopus occipitalis</i>	LARGE CROWNED LEAF WARBLER
109. <i>Phylloscopus reguloides</i>	BLYTH'S LEAF WARBLER
110. <i>Erithacus svecicus</i>	BLUETHROAT
111. <i>Copsychus saularis</i>	MAGPIE ROBIN
112. <i>Cercomela fusca</i>	BROWN ROCK CHAT
113. <i>Saxicola torquata</i>	STONE CHAT
114. <i>Saxicola caparata</i>	PIED BUSH CHAT
115. <i>Monticola solitarius</i>	BLUE ROCK THRUSH
116. <i>Parus major</i>	GREY TIT
117. <i>Anthus trivialis</i>	TREE PIPIT
118. <i>Motacilla alba</i>	PIED WAGTAIL
119. <i>Motacilla maderaspatensis</i>	LARGE PIED WAGTAIL
120. <i>Dicaeum agile</i>	THICKBILLED FLOWERPECKER
121. <i>Dicaeum erythrorhynchos</i>	TICKELL'S FLOWERPECKER
122. <i>Nectarinia asiatica</i>	PURPLE SUNBIRD
123. <i>Aethopyga siparaja</i>	YELLOW BACKED SUNBIRD
124. <i>Zosterops palpebrosa</i>	WHITE EYE
125. <i>Passer domesticus</i>	HOUSE SPARROW
126. <i>Petronia xanthocollis</i>	YELLOWTHROATED SPARROW
127. <i>Ploceus philippinus</i>	BAYA
128. <i>Ploceus manyar</i>	STREAKED WEAVER BIRD
129. <i>Estrilda amandava</i>	RED MUNIA
130. <i>Lonchura striata</i>	WHITEBACKED MUNIA
131. <i>Lonchura punctulata</i>	SPOTTED MUNIA
132. <i>Carduelis spinoides</i>	HIMALAYAN GREENFINCH
133. <i>Carpodacus erythrinus</i>	COMMON ROSEFINCH
134. <i>Prinia gracilis</i>	STREAKED WREN WARBLER
135. <i>Certhia familiaris</i>	TREE CREEPER

THE MAMMALS

The yelps of jackals, the bark of a Muntjac and the pugmarks of a leopard never fail to get the adrenalin of a wildlifer streaming. If the grass is greener on the other side of the fence, what are these animals doing here? We haven't seen any jumping jackasses yet, or have we? With an increasing interest in the mammals of the campus, there has been an increase in the number of torch bearing strollers. But judging from the length of the list, the number is still small.

Macaca mulatta

Panthera pardus

Felis chaus

Viverricula indica

Herpestes edwardsi

Canis aureus

Pipistrellus coromandra

Hystrix indica

Lepus nigricollis ruficaudatus

Axis axis

Muntiacus muntjak

Sus scrofa

Rhesus Macaque

Leopard

Jungle Cat

Small Indian Civet

Common Mongoose

Jackal

Indian Pipistrelle

Indian Porcupine

Rufoustailed Hare

Chital

Barking Deer

Indian Wild Boar