

Chairman of CAB International's 1990 Review Conference, Dr M S Swaminathan, right, is presented with a gift of appreciation by the Vice Chairman, Dato Wan Jaafar bin Abdullah of Malaysia at the end of the five-day meeting. Also in the photograph are, left to right: Director General, Don Mentz; Director, Administration, Tim Martin; Director of the International Mycological Institute, Professor David Hawksworth; General Counsel, Daud Ilyas and Director, Scientific Services, Dr Dennis Greenland.

In five days of debate and discussion, the conference agreed radical changes to CABI's financial structure which will enable it to do more to meet the agricultural information and research needs of developing countries.

RC90 Special issue

CAB International held its 1990 review conference at the Queen Elizabeth II Conference Centre, London from 30 July to 3 August for representatives of its 29 member countries as well as observers from a further 30 countries and from a dozen international organisations.

The event was formally opened by Mrs Lynda Chalker, UK Minister of Overseas Development, and chaired by the eminent Indian agricultural scientist and environmentalist, Dr M S Swaminathan.

His Royal Highness the Duke of Edinburgh attended part of the first day of the meeting, listening to reports from the Director General and the Directors of Scientific Services, Information and Information Technology, before expressing some of his own views on the importance of sustainable agriculture and the place of biological control in it.

Agreed by conference . . .

CABI's plans . . .

- for greater financial self sufficiency
- to introduce the principle of 'fees for service'
- for phased reduction in membership contributions
- to prepare for charging for identification services after 1993
- to set up a Partnership Facility to help developing countries buy CABI services
- to replace the Governing Committee with a Governing Board of experts in their fields
- to make capital investments in the research institutes
- to step up research programmes concerned with sustainable agriculture, the environment and biological controls.

Sustainability theme for RC90

Dr M S Swaminathan FRS, president of the National Academy of Sciences of India and of the International Union for the Conservation of Nature and Natural Resources, chaired the five days' of formal sessions and detailed discussions which made up CAB International's 1990 Review Conference.

He gave a detailed address on the first day of the meeting, voicing some of his concerns about the future of world agriculture and the difficulties of increasing output in developing countries without harming the environment.

But he also talked about his belief that combining frontier technologies with traditional approaches to farming could produce the land saving agriculture that developing countries need if they are to feed their growing populations. It may also encourage people to stay in the countryside and not become economic migrants living in the slums of the cities.

These extracts from Dr Swaminathan's talk cover some of the many points that he made.

'These are days when 'sustainability' is used as an essential characteristic of all development programmes to stress that short term gains should not be at the expense of long term prospects.

'For CABI, the challenge lies in achieving a sustainable dynamism. To do this, the organisation has to be eternally young in terms of the relevance and excellence of its programmes, products and services.

'The diversity of biological wealth and agricultural capability among the members of CABI is great. Some members have substantial food surpluses while others have to import food to meet their needs.

'Many are rich in biological diversity, while several are rich in the biological technologies, chemical engineering and management skills necessary to convert biological wealth into economic wealth. But their collective strength is considerable. The challenge lies in capturing this for the common good.

Pressure on land and water

'In the developing part of the world serviced by CABI, the pressure of human and animal populations on land and water is increasing day by day. The per capita availability of land is already below 0.5 hectares in several countries, including India; in China it is as low as 0.15 hectares.

'Unsustainable exploitation and unscientific practices are diminishing the biological potential of the soil and depleting groundwater reserves. The poor and the marginalised suffer most from such environmental breakdowns.

'The only path open to such countries to meet their food and other agricultural needs is a continuous improvement in terrestrial and aquatic productivity without harming the basic natural assets of land, water, flora, fauna and the atmosphere. This will call for a continuous but sustainable enhancement of productivity per unit of area, water, energy and time.

'The green revolution of the 1970s resulted in higher production of wheat and rice through improvements in yield, thus helping to save land.

'In 1964 India produced 12 million tonnes of wheat from 14 million hectares of land. In 1990, farmers harvested about 55 million tonnes of wheat from about 23 million hectares of land. To harvest 55 million tonnes at 1964 yield levels, the country would have needed nearly 40 million hectares of additional land. The United Nations Environment Programme estimates that 90% of the world's deforestation of 12 million hectares a year is caused by the spread of agriculture into forest land.

'In most developing countries the

population is predominantly young. Over 50% of India's 850 million are below the age of 21. Nearly 70% of the population derives their livelihood from agriculture and other rural professions.

'The future of agriculture in such countries depends on our ability to attract and retain youth in farming and other rural professions, otherwise urban slums will multiply and social tensions will grow. Agriculture has to become an occupation which requires as much brain as brawn.

Land saving agriculture

'What is needed in population rich but land hungry countries is land saving agriculture and grain saving animal husbandry. This can be achieved only by further improvements in technology.

'At the same time, persistent environmental degradation will have to be arrested. This calls for greater effort to blend traditional and frontier technologies so that the ecological and economic strengths of both are combined.

'The frontier technologies of particular interest are biotechnology, space technology such as weather satellites in remote sensing, information technology including computer aided instruction and extension and management technology which pulls all the pieces together.

'Technology and trade have been prime movers of economic prosperity in the countryside in industrialised countries. Non-farm and off-farm employment opportunities grow when post-harvest technologies and trade opportunities improve. To achieve this, we need research into skilled job creation specifically tailored to rural areas.

'Since many members of CABI have extensive coastal areas, there is also need for a coastal systems research programme designed to promote both capture and culture fisheries, coastal forestry and agroforestry - including the protection of mangroves, coral reefs, sea grasses and associated flora and fauna. They also need methodologies for an ocean productivity classification on the model of land capability studies. As much carbon is fixed in the ocean as on land and we must derive better benefit from it.

Ending chronic hunger

'A third requirement for sustainable agriculture is to end chronic hunger. High under-five infant mortality rates impede the success of programmes to stabilise population. Inadequate purchasing power, the primary cause of hunger today, leads in many developing countries to uncomfortable food gluts even when there

is an increase of only five to ten per cent in grain food production.

'While efforts to improve food production must continue, imaginative ways of improving food consumption and eliminating chronic hunger are also needed. Increasing production and productivity by resource-poor farmers will need reinforcing packages of technology, services, public policy and international cooperation.

'All this calls for a revolution, both in patterns of international cooperation and in information systems. Such information systems should be capable of integrating and analysing the interactions between biophysical, environmental, economic, social and demographic trends of rural systems.

'CABI is well placed to meet these challenges. It is not a time to relax. I am confident that the decisions which Conference takes will establish a basis for CABI to meet the challenges ahead during this decade and beyond to help play its part in a world which will be free from hunger.'

India and CABI sign cooperation agreement

India was one of the founder members of CABI and has been a contributor to it and its predecessors for 60 years. It has drawn in return on CABI expertise on pest and disease identification, pest control research and information facilities.

The research station at Bangalore formerly operated by the International Institute of Biological Control and the Indian Council of Agricultural Research (ICAR) has been taken over fully by ICAR and is now the centre for the All-India biological control programme. CABI's Scientific Services collaborate with ICAR. But the Council, which promotes and directs agricultural research throughout the country and CABI decided to formalise arrangements with an agreement which would establish a basis for closer and more effective cooperation in the future.

So RC90 was chosen as the forum for the signing ceremony which marks a new era of cooperation between two organisations both aiming to benefit the agriculture and agricultural research of the South Asia region.

Here Director General, Don Mentz, right and Dr G C Srivastava, far right, Secretary of the Indian Council for Agricultural Research, complete the signing ceremony with a handshake.

Creating a new style international organisation

Three days of hard and detailed discussion of radical proposals intended to change CABI into a new style international service organisation followed the formal presentations of the first day of the 1990 Review Conference.

Implementing CABI's plans for greater financial self-sufficiency depended crucially on member country representatives at the conference agreeing to a phased reduction in membership contributions – eventually to nearly zero – and to the counter balancing introduction of charges for services which were previously free.

Conference did agree. The decision not only triggers the change in philosophy but is also a vote of confidence in CABI that it can sell more services to existing members, bring in new ones and continue to attract funds from donor organisations to carry out its research, information and consultancy projects for developing countries.

Financially sound

Director General, Don Mentz, was in no doubt as to the future when he spoke to the Conference.

'This Conference could be accurately described as the launch of the new CAB International', he said. 'The foundations were laid by the 1985 Review Conference which unanimously recommended that membership should be open to all countries and that the former Commonwealth Agricultural Bureaux should be transformed into C·A·B International.

'A new name and a new constitution was just the start. It is the work of this 1990 Conference to put flesh on the bones created in 1985.'

'CABI's underlying finance is sound and it has a large untapped market potential. It is already quite different from most comparable international organisations. Only 16% of its income is from member country contributions; 84% comes mainly from the sale of its products and services.'

Proposals for the next decade, put to RC90 as part of the overall strategic plan, call for income to be raised faster than the projected rise in expenses.

This is to be achieved by exploiting advances in information technology, by continuing to diversify into primary journals and books and by increasing earnings from scientific and development services. That will at the same time lessen dependence on products derived from the agricultural database. Marketing too will have a big role to play.

CABI already finances through its earnings scientific activities which would not normally be self-supporting. Setting up Development Services in 1986 introduced a new dimension to CABI's multi-disciplinary agricultural consultancy projects.

New directions

CABI plans for the 1990s call for research, which has been the hallmark of the organisation since its early days, to be brought to the fore and directed

sharply towards specific aims. Environmental issues and related activities such as pest management loom large. So CABI is to inject a greater environmental perspective into all its work.

The scientific institutes are to continue to monitor new technologies. These include developments in biochemistry and biotechnology with their promising opportunities such as the application of recombinant-DNA technology to filamentous fungi and other microorganisms.

CABI also plans to develop new information products and services through technical innovation, paying special attention to the needs of developing countries.

And language barriers to the sale and use of CABI products and services will be lessened if ways can be found to publish in French and Spanish.

Need for more members

'Unit costs, particularly on the information side, are greatly influenced by the volume of usage', the Director General pointed out to RC90. 'We need more usage of CABI services by existing members and we need more members. The strategic plan sets the target at doubling the number of members from the present 29 within the next decade.'

'The concept of membership calls for relatively small direct financial obligations but substantial commitment to scientific cooperation. This opens up opportunities for genuine partnership between developed and developing countries.'

The importance to CABI of the concept of partnership with its member countries and the interaction which goes with it is emphasised in plans to extend the network of regional offices. To the Asia Regional Office are to be added before the end of 1991 regional offices in Trinidad for the Caribbean and Latin America area and in Kenya for Eastern and Southern Africa.

Much of what the Director General asked for in his main speech to the Conference was formally agreed in the resolution on membership arrangements adopted on the final day.

Over the next five years, membership contributions are to be phased down, charges for pest and disease identification services phased in and quota arrangements for information products phased out. Responsibilities of membership were also agreed and include using 'best endeavours' to maximise the use of CABI products and services by the private as well as the public sector of member countries.

The RC90 resolution spelled out that priority needs of developing member countries for CABI services may be supported through the bilateral development assistance programmes of developed member countries and other donor organisations, or through a Partnership Facility set up to provide funds to help developing countries, a proposal also agreed by the Conference.

Management is to report on the new membership arrangements, charges and discounts to the Executive Council in 1992 and to the 1993 Review Conference.



Conference agrees Partnership Facility

RC90 directed Executive Council to authorise the setting up of a Partnership Facility as another way of funding developing country projects. It also asked the development assistance agencies of member governments to support the Facility and to encourage other agencies to lend their support.

High priority within the Partnership Facility will be given to country appraisal missions. Each mission will discuss with a country its agricultural information and research needs to develop an agreed programme which will serve as a basis to seek funding either through the Facility or as individual projects.

That was the thinking behind the early 1990 visits to Uganda and the Philippines funded by the Australian International

Development Assistance Bureau and carried out by teams led by Margot Bellamy, head of CABI's Bureau of Agricultural Economics, and Dr Klaus Carl, entomologist in charge at the International Institute of Biological Control's European Station at Delemont, Switzerland (*C·A·B International News*, June 1990).

Conference agreement to the Partnership Facility brings membership of CABI within reach for developing countries otherwise cut off from its services by lack of money.

A list of programmes and projects offered for external funding through the Partnership Facility or by direct agreement between the donor and CABI was given to RC90 delegates. It ranges from programmes to supply CABI products and services to

developing countries to improving the national capacity for pest management in the forests of Africa, and from country appraisal programmes to schemes to help outstanding young professionals from developing countries increase their skills.

Next Review Conference: 1993

CABI is to hold review conferences more frequently than in the past. Because of the speed of developments in CABI and the new approach to its international role, the next meeting is planned for 1993. In the past the pattern has been for quinquennial reviews.

Five years of progress for Scientific Services

Director, Scientific Services, Professor Dennis Greenland, reported five years of progress to the 1990 Review Conference.

- Development Services was set up in 1986 as CABI's consultancy arm and project management/implementation service. It has had a steady stream of work since then from member countries and international agencies and is now also responsible for coordinating CABI's international training activities.
- The research institutes' taxonomic services have continued to grow in importance. Among a number of successes, identifying the mango and citrus mealybug, *Rastrococcus invadens*, has led to a successful biological control programme in West Africa. New biocontrol agents recently identified include a fungus which can control the giant spiny mimosa.
- International awareness of the value of biological control is bringing increased funding to the International Institute of Biological Control. Biocontrol projects have more than doubled in the last ten years and project income has trebled from £300,000 (US\$564,000) in 1980 to £1.1 million (US\$2 million) in 1989.
- The research institutes maintain their position at the forefront of knowledge



HRH Prince Philip, centre, questions IIBC's Deputy Director, Dr Jeff Waage, about the international biological control project for locusts which is being led by IIBC. On Prince Philip's left is Director, Scientific Services, Dr Dennis Greenland.

on taxonomy and pest ecology. The fundamental research this allows them to carry out includes projects such as the International Mycological Institute's work on biochemical ways of differentiating between races of the damaging *Fusarium* fungus.

- Growing cooperation with other national and international research organisations is leading to collaborative projects such as the £2.5 million (US\$4.7 million) biological control programme for locusts being led by IIBC.

enhance CABI's systems capability.

Systems has also gone on to fulfil the second part of its remit - to establish a research and development programme to enhance the use of information technology and to deliver new income earning products and services.

In the forefront is the development of the CD-ROM - compact disc-read only memory - databases. 'They are', says Jim Gilmore, 'a breakthrough in transferring information to developing countries and will take CABI into new areas of technology. I envisage in-house production of CD-ROM and its use in producing advanced products such as electronic information compendiums on the major pests and diseases of food crops.

More systems for information, research

'Top flight information technology lies behind most of the income generating work of Information Services. On the research side, almost all CABI scientists now use microcomputers routinely in their work', Director, Information Technology Services, Jim Gilmore reported to RC90.

Finance, personnel and office services are fully automated and all sectors of the organisation, including the overseas offices are now connected by modern telecommunications. This meets the challenge set by the 1985 Review Conference to introduce a five-year development programme to

Minister announces CD-ROM collaboration

'I am pleased to tell you that the Overseas Development Administration has agreed to finance the preparation by CABI and the Oxford Forestry Institute of a database which will greatly improve access to the results of forestry research worldwide.'

'It is to be based on the new compact disc technology known as CD-ROM. A single compact disc will contain all the abstracts prepared by CABI on forestry over the last 50 years. It will be a unique and invaluable resource to the forestry community.'

This announcement was made by Mrs Lynda Chalker, UK Minister for Overseas Development, when she formally opened CABI's 1990 Review Conference.

Mrs Chalker went on to say: 'The crucial role of forestry practices in environmental protection is now well understood. But we are only beginning to understand how critical is the interface between farmer and forester and the complex but vital role trees have to play in sustainable agricultural systems. There are social dimensions to this relationship too, for example, in terms of the role women have in all aspects of development. In most developing countries they are both farmers and collectors of wood and water. The role of information in addressing these forestry related problems will be crucial.'



UK Minister for Overseas Development, Mrs Lynda Chalker, opened the 1990 Review Conference. She endorsed CABI's proposal for a Partnership Facility to enable development agencies to fund projects administered by CABI: 'I can say for my part that the Overseas Development Administration for one will be prepared to consider requests from developing countries for assistance with projects associated with C·A·B International'.

Information Services: new products, new ideas

Over the past five years, Acting Director Information Services, Dr Colin Ogbourne told the Review Conference, input to CAB ABSTRACTS has averaged 130,000 new records a year. In 1990, the rate of input has been accelerated to over 150,000, adding even more information to CABI's already vast store of knowledge on agricultural and related research worldwide. It now amounts to 2.5 million abstracts in electronic form, plus 3 million published only in printed journals before 1973.

Four new abstract journals have been issued since the 1985 Review Conference, including *AgBiotech News and Information* and *Postharvest News and Information*, bringing the total number of titles to 45.

The book publishing programme has been expanded and the list of primary journals published by CABI now includes *Outlook on Agriculture*, acquired from Pergamon Press in 1989.

50 years of forestry information

CABI's new forestry CD-ROM will hold all the abstracts of the world's forestry literature prepared by CABI over the last half century. When completed in 1992, the compact disc will contain over 300,000 abstracts and is expected to be the most comprehensive guide to international forestry literature available anywhere in the world. The information has been drawn from *Forestry Abstracts*, *Forest Product Abstracts* and *Agroforestry Abstracts*.

As Marketing Manager for Electronic Publications, Deb Wiley, explains: 'When connected to a personal computer, this new product will provide an entire forestry library at your fingertips. The user friendly software will enable users to search virtually every word on the compact disc or to limit the search to a specific field such as the title or index.'

'The new CD-ROM will give easy access in seconds to over half a century of the world's forestry literature.'

New governing body will add international expertise

In another departure from the past, CABI is to have a change of governing structure. RC90 agreed that the current Governing Council, which is drawn mainly from member countries' diplomatic staff, should be replaced by a 10-strong Governing Board of international experts in fields which impinge directly on CABI's activities.

The resolution on change of governance states that 'members of the Governing Board shall generally be citizens of member countries. They shall be persons of high competence and demonstrated leadership in areas relevant to the work of CABI and shall between them have experience in

- management of scientific programmes, including research on insects, fungi, parasites and biological control; at least one person should have recent experience doing, or supervising directly those doing field or bench research
- editorial and business aspects of database management and related products
- information science and its application in agricultural research

- development of agriculture and agricultural research in the tropics
- economics
- high level experience in administering an international organisation in a related field
- senior responsibility in administration management and finance.

The Chairman of the new Governing Board is to be Dr M S Swaminathan. He and fellow members will be responsible for the overall guidance of CABI, ensuring the implementation of the decisions of the Review Conference and overseeing the general operations of the organisation.

The Executive Council, which will appoint the Governing Board, remains the body responsible for key issues such as the admission of new members and the approval of budgets.

A five member nominating committee is to suggest names for the new Governing Board to the Executive Council before the end of 1990. The intention is for it then to commence operation not later than the end of March 1991.



RC90 brought to the Queen Elizabeth II Conference Centre, London, representatives of CABI's 29 member countries, as well as observers from a further 30 countries and from international donor organisations.

Sustainable agriculture: looking after the microorganisms

Only about a million out of an estimated 8 to 80 million of the world's invertebrates have been described, and there are still plenty of them in the tropical regions. But there are concerns about the protection of unique ecosystems as reservoirs of the biodiversity which is so important to human populations. This diversity will be needed increasingly to enhance agricultural productivity through improving soil structure and fertility, through providing alternative ways of controlling pests and diseases and for developing novel products.

That was the conclusion of the July 1990 workshop on the 'Ecological Foundations of Sustainable Agriculture: the Importance of Biodiversity among Invertebrates and Microorganisms', held in London a few days before RC90.

The workshop brought together some 130 policy makers, scientific administrators and scientists from 23 countries.

A statement of findings was drawn up at the end of the two-day meeting, which was chaired by Dr M S Swaminathan. A copy has been forwarded to Dr Maurice Strong, secretary of the United Nations Conference on the Environment and Development to be held in Brazil in 1992.

The workshop concluded that much more information is needed about the effect of changes in land use on the numbers and types of lower organisms, including fungi and bacteria. Those organisms are fundamental to the success of sustainable agriculture in many ways, including helping maintain soil fertility, forming the lowest links in the food chain and generally providing the basis for the complex pattern of interactions between living organisms.

Speakers stressed how important it is to be able to identify and classify invertebrates and microorganisms. So a continuing flow

of material for identification is not only a service to the country which submits the sample but also the basis for a better understanding of biodiversity among the lower organisms.

CABI sponsored the ecological workshop with the Third World Academy of Science, The Commonwealth Science Council and the Commission on the Application of Science to Agriculture, Forestry and Aquaculture of the International Council of Scientific Unions.

The United Nations' Development Programme, the UK's Overseas Development Administration, the Australian International Development Assistance Bureau, the Ford Foundation, the EC's Technical Centre for Agriculture and Rural Cooperation and the British Council gave additional financial support.

The workshop proceedings are to be published by CABI.

Pest identification charges under review

The 1990 conference agreed that, as membership contributions are phased down, so fees for service must be introduced. That includes charging for pest and disease identifications which are currently free to member countries.

CABI's research institutes carry out on average 11,000 free pest and disease identifications a year for member countries and some 3000 more for a fee for non-member countries. It is likely that the numbers of samples sent for identification by both developed and the developing country members will fall when they have to pay, and the national capabilities in taxonomy will be enhanced. The CABI Institutes will work to support the improvement of national capabilities, and donor support will be sought to help fund identifications for countries unable to pay for or conduct their own identifications.

The specimens that are sent for identification help the taxonomists monitor the distribution of pests, pathogens and beneficial organisms, information which is used to update CABI's distribution maps. They also alert the research institutes to species which could become serious problems in different parts of the world. In several instances, the identification services have given early warning of a previously unknown pest or of the introduction of a serious, exotic pest.

For example, a specimen submitted to the International Institute of Entomology and identified by scientists of the Natural History Museum warned of the introduction to North Africa of the New World screw-worm fly. This serious pest is a major threat to livestock, wildlife and people and was previously unknown outside the American continent. In 1987, the International Mycological Institute identified in a sample of bananas from Zanzibar, a disease, blackstreak, previously unknown in Eastern Africa.

Because of the importance of the identi-

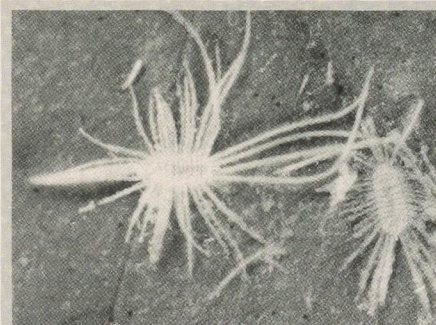
fication services not only to farmers and growers around the world but also to the taxonomists working in the CABI research institutes, consultant Dr M H Arnold, a member of the Commission on the Application of Science to Agriculture, Forestry and Aquaculture of the International Council of Scientific Unions was commissioned to review the likely impact of a 'fees for service' approach.

'CABI's services are complementary to FAO activities and to national identification services. As those services become stronger, the CABI biosystematic institutes will increasingly concentrate on the more difficult specimens. If CABI was unable to maintain an effective identification and monitoring service of this type, alternative international arrangements would have to be made to fulfil this function', comments Dr Arnold in his report to the 1990 Conference.

Several ways have been suggested for charging for identification services ranging from supplementary subscriptions to vouchers to paying for individual identifications - or a combination of all three.

Any new arrangements will allow for exceptions. For example, charges could be waived for identifications when there is an emergency, such as the suspected occurrence of a potentially serious pest, or where there are special scientific needs either on the part of member countries or by CABI research scientists.

Conference endorsed the proposal to defer charging for identifications until after the 1993 Review Conference. Before then, CABI management will prepare a definitive proposal to be discussed by the new Governing Board and put to Executive Council. Then CABI will publicise the scheme among member countries and development agencies to make sure that they know about the change when preparing their budgets for 1994 on.



Identifying this mealybug, *Rastrococcus invadens*, has led to a biological control programme which is saving West African mango and citrus crops from devastation.

Malaysia: international pest management seminar

CABI and the Agricultural Institute of Malaysia are organising a joint international seminar on May 7 and 8 1991 under the title *Pest Management and the Environment in the Year 2000*.

The event is to be held in Kuala Lumpur for agricultural scientists, administrators, plantation managers and representatives from the agricultural industries of the South East Asia region.

The meeting is being held to determine the best policy for pest control in the future, using Malaysia as the meeting place because of the high quality of pest management work in the country and the importance of its agricultural sector.

The meeting is to have five sessions led by international speakers, covering

- pest problems in 2000
- pesticides in 2000
- integrated pest management
- biological control
- biodiversity and biotechnology.

For further information contact CABI Asian Regional Office, Level 3, Block E Kompleks Pejabat Damansara, Jalan Dungun, Damansara Heights, 50490 Kuala Lumpur, Malaysia.

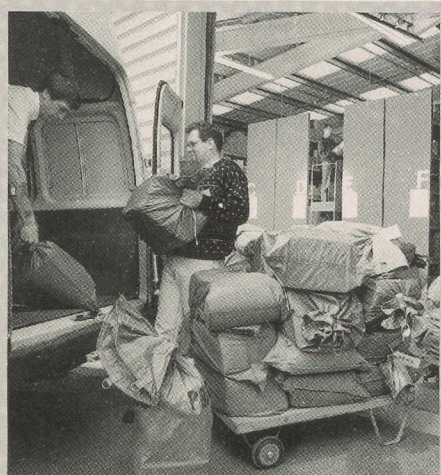
Books, journal despatch now starts from Wallingford

A new 742m² (8,000 sq ft) warehouse specially designed for storing and distributing CABI books and journals has been completed at Wallingford and is beginning to work well. It brings together from three other locations the distribution of all CABI publications.

Stores manager, Gordon Hewson, was closely involved in the design of the new building as the person most familiar with the problems of coping with over 250 titles, some 50 of which are regular journals. There is also the need to hold journal stocks at reasonable levels for two years and to keep old issues for researchers in need of information published anything up to 20 years ago. In fact, says Gordon Hewson, copies of key publications are kept back to CABI's beginnings as the Imperial Agricultural Bureaux – and that was in 1928.

Books are now packed and stored in pallet loads so can be moved easily by fork lift truck, and the racks are organised so that journals can be handled efficiently.

Stock control is being computerised in



Several thousand journals and books are despatched each week from the new warehouse at Wallingford.

stages but, because of the variety of order, size and destination, much of the sorting and labelling can only be done by hand. So the seven young people working as sorters and consolidators swop jobs regularly, taking turns to manage the computerised records, wrap packages and organise despatch details.

The daily van collection takes away sackloads of books and journals destined for universities, libraries, international agencies, research institutes and individual scientists in virtually every country in the world.

The locust project is progressing

The collaborative project on biocontrol of locusts set up a few months ago by the International Institute of Biological Control (IIBC), the International Institute of Tropical Agriculture (IITA) and Département de Formation en Protection des Vegetaux (DFPV) (*C·A·B International News* June 1990) is continuing to progress.

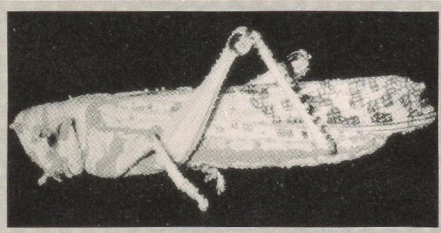
- Exploration by IIBC staff in Niger has led to the identification of a pathogen not previously known to infect locusts.
- Applicators for fungal pathogens developed at the International Pesticide Application Research Centre at Silwood Park have successfully undergone their first field tests in Benin.
- IITA has established laboratories for locust and grasshopper studies at its Cotonou Station, Benin.

The next locust project management committee was being held in Washington DC at the end of October as this issue of *C·A·B International News* went to press.

IITA chairmanship

IITA takes over the chairmanship of the meetings from CABI for the second year of the project, starting with the Washington review. The chairmanship alternates between Director of Scientific Services, Professor Dennis Greenland, and the Deputy Director General (Research) of IITA, Dr Ken Fischer.

The biological control programme for locusts is funded by a consortium of donor



organisations from Canada, the Netherlands, the USA and the UK. It is managed by a committee drawn from the organisations taking part in the project. Donors attend the management committees as observers and other interested organisations such as FAO and UNDP are invited to take part.

People

Dr Colin Ogbourne has been appointed Acting Director, Information Services following the appointment of *Dr John Metcalfe* as General Manager of International Food Information Service, an organisation of which CABI is a sponsor.

Jim Gilmore, Director, Information Technology, is taking on the additional responsibility for Marketing and Sales following the move of former head, *Elaine Cook*, to become Group Marketing Manager at the ITEM Group.

Dr J Mark Ritchie joined the International Institute of Entomology as Assistant Director in July 1990 from the UK's Natural Resources Institute. He will have particular responsibilities for the administration of the identification services and for training.

Books: new series on biotechnology

A new series of books on biotechnology in agriculture is being published by CABI. Three titles are to be available before the end of 1990 and several more are in preparation. The series general editor is Gabrielle Persley from the International Service for National Agricultural Research (ISNAR), in The Hague and project manager for the World Bank/ISNAR/Australian Centre for International Agricultural Research (ACIAR) biotechnology study.

The first two titles, *Beyond Mendel's Garden: Biotechnology in the Service of World Agriculture and Agricultural Biotechnology: Opportunities for International Development*, are based on a study set up by the World Bank, ISNAR and ACIAR. Its aim was to assess the potential of biotechnology to increase productivity and to identify the socio-economic, policy and management issues which may affect its application.

Beyond Mendel's Garden, number one in the series, is a companion volume to the second in the series, *Agricultural Biotechnology* and focuses more on policy and socio-economic issues related to Third World development than on individual commodities. It is written at a less technical level than the main title and is aimed at readers without a detailed knowledge of genetics or biotechnology so will interest policy makers, non-specialist scientists, students and teachers concerned with the broader aspects of agriculture and Third World development.

Beyond Mendel's Garden was published in October 1990 at a price (including postage) of £11.95 (US\$21: Americas only).

Agricultural Biotechnology is made up of 32 commissioned chapters and 500 pages covering biotechnology in relation to plant production, its potential for the control of plant diseases, pests and weeds, its use in agricultural diagnostics in developing countries, socio-economic and regulatory issues, proprietary rights and chapters on commodities including rice, wheat, potato, oil crops, banana, cassava, cocoa and coffee.

Agricultural Biotechnology is due to be published in December 1990 at a price, including postage, of £60 (US\$99.50 Americas only).

The third in the series of biotechnology books due out in 1990 is entitled *The Molecular and Cellular Biology of the Potato* and is edited by M E Vayda from the University of Maine and W Park from Texas A & M University. It reviews recent advances in the understanding of the molecular biology, cell biology and genetic engineering of the potato and is written by the world's leading research workers from Europe, the United States and the International Potato Center, Peru.

Published in June 1990, *The Molecular and Cellular Biology of the Potato* costs, including postage, £30 (US\$49.50 Americas only).

New site for International Mycological Institute

The International Mycological Institute (IMI) is to move to Egham, Surrey to what is known as the Alderhurst site in the grounds of Royal Holloway and Bedford New College, part of the University of London.

Director General, Don Mentz, was able to announce to delegates visiting the proposed location during RC90 that planning permission had just been received to allow the project to go ahead.

The 1990 Review Conference authorised CABI to spend the £5.1 million (approx US\$9.2 million) that the relocation will cost.

The move for IMI has become essential now that it has outgrown the facilities adjoining the Royal Botanic Gardens at Kew which have been its base since 1920. Short term arrangements have been made with Kew in recent years to ease the pressure on space. But lack of space is now so acute that it is affecting IMI's ability to expand its research and service activities to play its full part in the new style CABI.

The search for a new site continued throughout 1988 and 1989. The new location had to be within easy reach of the Royal Botanic Gardens because of the interlinking of the two organisations' fungal collections and libraries. It was also important to stay within reasonable reach of CABI's other research institutes and of headquarters, at Wallingford.

The Alderhurst site at Royal Holloway and Bedford New College meets all the criteria. It is only 12 miles from Kew. Even more important, the International Institute of Biological Control can be reached by car within five to eight minutes, an important factor because of the number of joint projects run by the institutes and their

exchanges of library material.

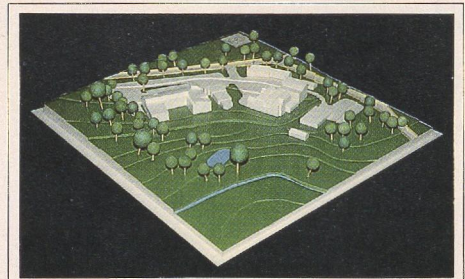
Alderhurst covers in all an area of 14 acres (6.4 hectares), most of which is still natural habitat with its special appeal to mycologists who delight in finding fungi of all kinds in undisturbed areas. CABI is to buy four acres (1.8 hectares) of land which includes the original manor house, lodge and stable block. The main house is to be extended. There will also be a large new block for laboratories and for teaching, together with glasshouses.

IMI already offers a range of training courses and takes on students for higher degree project work. At Egham there will be more space and more scope for extending that side of the Institute's activities. And expertise at Royal Holloway and Bedford New College complements that of IMI research staff; both expect to share the use of biochemical, ultrastructural and computing equipment.

Building of the new facilities is expected to start in 1991 for IMI to start moving in 1992.

The move for the International Mycological Institute epitomises the stated aim of Director, Scientific Services, Professor Dennis Greenland, 'to make the work of the Scientific Services more effective by a greater degree of collaboration between the institutes themselves, with other parts of CABI, and with other national and international organisations around the world.'

IMI is recognised as an international centre of excellence in mycology, undertaking research and providing identifications of rare and difficult specimens to specialists around the world. It is the world's leading centre on the systematics of many groups of fungi.



This model of the new site for the International Mycological Institute was on display at RC90. A four-acre site is being purchased in the grounds of Royal Holloway and Bedford New College at Egham, not far from CABI headquarters at Wallingford, from IIBC at Ascot and from the Royal Botanic Gardens at Kew with whom IMI share fungal collections and libraries.

Change of name for research institutes . . .

CABI's four research institutes are now to be known as

- International Mycological Institute
- International Institute of Biological Control
- International Institute of Parasitology
- International Institute of Entomology with a sub-description 'an Institute of CAB International'.

The change of name, agreed at RC90, recognises the international status of the institutes.

. . . and Systems becomes Information Technology

In recognition of its widening role and to reflect its function more accurately, Systems Division has been renamed Information Technology Services. Jim Gilmore is therefore now designated Director, Information Technology.

More space for IIBC

The RC90 conference agreed a further investment of £750,000 for an extension to the International Institute of Biological Control.

The new buildings at Imperial College's science park at Silwood Park, Ascot opened just over a year ago (*C·A·B International News*, June 1990) are already fully occupied. The extension will provide space for joint work with IMI and IIE and for IIBC's new areas of activity.

IIBC is to place increasing emphasis on assessing natural enemies and their role in relation to other pest control measures as a way of improving integrated pest management techniques. There will also be more work on biological control agents and biopesticides for developing countries.

RC90 Special Issue

Contents

- | | |
|---|---|
| 1 | Agreed by Conference . . . |
| 2 | Sustainability theme for RC90 |
| 2 | India and CABI sign cooperation agreement |
| 3 | Creating a new style international organisation |
| 4 | Conference agrees Partnership Facility |
| 4 | Next review conference: 1993 |
| 4 | Five years of progress for Scientific Services |
| 4 | More systems for information, research |
| 4 | New governing body will add international expertise |
| 5 | Minister announces CD-ROM collaboration |
| 5 | 50 years of forestry information |
| 5 | Information Services: new products, new ideas |
| 6 | Sustainable agriculture: looking after the microorganisms |
| 6 | Pest identification charges under review |
| 6 | Malaysia: international pest management seminar |
| 7 | Books, journal despatch now starts from Wallingford |
| 7 | The locust project is progressing |
| 7 | People |
| 7 | Books: new series on biotechnology |
| 8 | New site for International Mycological Institute |
| 8 | Change of name for research institutes . . . and Systems becomes Information Technology |
| 8 | More space for IIBC |

C·A·B International
NEWS

Published by C·A·B International
Wallingford, Oxon OX10 8DE, England
Tel: 0491 32111
Fax: 0491 33508
Telex: 847964 COMAGG G
Telecom Gold/International
Dialcom: 84:CAU001

Press
Release



C.A.B International

56 Queen's Gate, London SW7 5JR, UK

Telephone: (071) 584 0067/8 Telecom Gold/Dialcom: 84: CAU006
Telex: 9312102251 (IE G) Fax: (071) 581 1676

Press
Release

NEW BOARD REFLECTS BUSINESS AND SCIENCE

C.A.B International (CABI) - World Services to Agriculture - announce the appointment of a Governing Board, with members of high competence and demonstrated leadership. Dr M S Swaminathan President of the International Union for the Conservation of Nature, who played a key role in India's green revolution, has accepted appointment as the first Chairperson.

Sir Ralph Halstead, deputy chairman of British Steel, will bring a business orientation to the Board. "This appointment reflects CABI's determination to run a tight business operation whilst maintaining its scientific excellence", declares its Director General, Mr Don Mentz, who is Australian. "The decision by member countries to set up a Governing Board was taken at the 1990 Review Conference and the high level of professional guidance now available is essential to navigate a rapidly expanding organisation into the next century", he concludes.

C.A.B International's 29 member governments will continue to exercise ultimate control over the organisation through a periodical Review Conference and through an Executive Council which will meet at least annually. The Governing Board will be responsible to the Executive Council. /mf2

In keeping with CABI's international status Board members are drawn from seven countries around the world. In addition to Dr Swaminathan and Sir Ronald Halstead members are Dr Curtis Farrar (United States); Dr Nicholas Mumba (Zambia), Secretary for Agriculture; Dr Gabrielle Persley (Australia), International Service for National Agricultural Research; Professor J A Spence (Trinidad), Cocoa Research Unit, University of the West Indies; Ms Martha B Stone (Canada), International Development Research Centre; and Professor J K Syers (United Kingdom). Dean of Agriculture, University of Newcastle-upon-Tyne.

The first meeting of the Governing Board is expected to be held in March 1991. Members will familiarise themselves with C.A.B International operations by visiting its Information Services at Wallingford Oxon and its four scientific institutes in and around London.

-END-

Issued by: **Jane Tweedy**
Press Officer

10 January 1991



Press
Release

C.A.B International

56 Queen's Gate, London SW7 5JR, UK

Telephone: (071) 584 0067/8 Telecom Gold/Dialcom: 84: CAU006
Telex: 9312102251 (IE G) Fax: (071) 581 1676

Press
Release

**MINISTRY'S CHIEF SCIENTIST
HOSTS RECEPTION
FOR
NEW GOVERNING BOARD**

Dr David Shannon, Chief Scientist (Agriculture and Horticulture), Ministry of Agriculture, Fisheries and Food, Chairman of CAB International's Executive Council, hosted a reception this evening Thursday 21 March 1991, to enable the new Governing Board to meet members of the Executive Council. The occasion was held at CAB International's central London headquarters, 56 Queen's Gate, London SW7 5JR.

In welcoming Board members, drawn from seven countries around the world, Dr Shannon referred to "this historic moment" as he reflected on CABI'S determination to run a tight business operation whilst maintaining its scientific excellence.

Attachments: Executive Council members, Governing Board members, Senior CAB International officials.

/mf2

EXECUTIVE COUNCIL MEMBERS

Dr D W F Shannon (CHAIRMAN)
Dr Keith T H Farrer
Mr Kent Campbell
Mr M Shahjahan Majumder
Mr C Mogotsi
Dr Erle Jones
Mr Pantelis Demosthenous
Mr S Robbins
Mr A Mbye
Mr S P Mehta
Mrs Sharon Saunders
Mr C M Kang'e
Mr G B Malunga
Mr B Dilmahamood
Dr J O Alimole
Mr David Anggo
Mr E Neilson (Hon Consul)
Mr G Munasinghe
Mrs V Calvin-Smith
Miss M Kedisi
Mr S Mutondo
Mr S Udenge

UNITED KINGDOM
AUSTRALIA
THE BAHAMAS
BANGLADESH
BOTSWANA
CANADA
CYPRUS
DEPENDENT TERRITORIES
THE GAMBIA
INDIA
JAMAICA
KENYA
MALAWI
MAURITIUS
NIGERIA
PAPUA NEW GUINEA
SOLOMON ISLANDS
SRI LANKA
TRINIDAD & TOBAGO
UGANDA
ZAMBIA
ZIMBABWE

GOVERNING BOARD MEMBERS

DR M S SWAMINATHAN, FRS (CHAIRMAN)
(Monkombu Sambasivan)
INDIA

President of the National Academy of Sciences of India
President of the International Union for the Conservation of
Nature and Natural Resources

First World Food Prizewinner 1987

DR CURTIS FARRAR
USA

Consultant

Executive Secretary, Consultative Group on International
Agricultural Research (CGIAR) 1982-1989. The CGIAR
secretariat is the focal point of a system of 13 international
centres financed at a level of \$250 million per annum by almost
40 countries.

SIR RONALD HALSTEAD CBE
UNITED KINGDOM

Deputy Chairman, British Steel Corporation.
Previously Chairman and Chief Executive Beecham Group.
Member of Council of Reading and Buckingham Universities.

DR NICHOLAS MUMBA
ZAMBIA

Permanent Secretary, Ministry of Agriculture.

Chairman, Board of the International Institute of
Tropical Agriculture (IITA).

/mf4

GOVERNING BOARD MEMBERS

Cont. . . .

**DR GABRIELLE JOSEPHINE PERSLEY
AUSTRALIA**

Biotechnology Manager, International Service for
National Agricultural Research (ISNAR)

Research Programme Coordinator (Crop Sciences) Australian Centre
for International Agricultural Research (ACIAR) - (1982-89).

**PROFESSOR JOHN A SPENCE
REPUBLIC OF TRINIDAD & TOBAGO**

Head Cocoa Research Unit, University of the West Indies (UWI).

Member of the Senate of the Republic of Trinidad & Tobago since
1987.

**MS MARTHA STONE*
CANADA**

Director Information Sciences Division, International Development
Research Centre, Ottawa. Manages a budget of \$CAN 14 million to
assist developing countries to adopt and use information
technologies.

**PROFESSOR JOHN KEITH SYERS*
UNITED KINGDOM**

Dean of Faculty of Agriculture, University of Newcastle-upon-
Tyne.

Professor and Head of Department of Soil Science, Massey
University New Zealand (1972-1985). Awarded Life Membership of
the New Zealand Society of Soil Science 1985.

*denotes absent

/mf5

SENIOR CAB INTERNATIONAL OFFICIALS

Director General
Don Mentz, BAgrSC, BEc

Director, Scientific Services
Professor D J Greenland, MA, DPhil, DAgrSc

Director, Administrative Services
T Martin FCA

Director, Information Technology
J H Gilmore, BSc, MACS

Acting/Director, Information Services
C P Ogbourne, BSc, PhD

Director, International Mycological Institute
Professor D L Hawksworth PhD, DSc, FLS, CBiol, FIBiol

Director, International Institute of Biological Control
D J Greathead BSc, ARCS, PhD, DSc, FIBiol

Director, International Institute of Entomology
*K M Harris DSc, DipAgrSci, DTA

Director, International Institute of Parasitology
R L J Muller BSc, PhD, FIBiol

General Counsel
Daud Ilyas, MA, BCL

Special Assistant To The Director General (External Relations)/
Secretary to the Board
Paul Kelloway, BA, DipPubAdmin

Press Officer
Jane Tweedy

* denotes absent

21 March 1991

Press
Release



C.A.B International

56 Queen's Gate, London SW7 5JR, UK

Telephone: (071) 584 0067/8 Telecom Gold/Dialcom: 84: CAU006
Telex: 9312102251 (IE G) Fax: (071) 581 1676

Press
Release

C.A.B INTERNATIONAL
World Services to Agriculture

C.A.B International (CABI) - World Services to Agriculture - is an intergovernmental agricultural, research and information organisation, established by a treaty level Agreement between governments. CABI's support for sustainable agriculture - improving food production without exhausting soils and destroying other resources - is far reaching as is its support for environmental conservation.

CABI'S SERVICES

CABI maintains the world's largest bibliographic database of abstracts on agricultural research and related subjects (CAB ABSTRACTS). Its three international biosystematic¹ institutes (Entomology, Mycology and Parasitology), identify more than 30,000 individual specimens, globally each year. The Institute of Biological Control (IIBC) has recently received grants of £2.5 million from several agencies for work on locust control in Africa.

- . CABI earns more than 80% of its expenditure, largely from the sale of scientific journals and other information services;
 - . only 15% of CABI income is from member country contributions.
- ¹(the science of classifying and identifying organisms)

/mf2

WHO GOVERNS CABI

An Executive Council composed of member country representatives advised by a Governing Board, whose members are selected for their competence and experience in areas of CABI's activities.

WHO ARE THE MEMBERS?

There are 30 member countries exhibiting wide differences in size, wealth, climate and institutional capacity. CABI has been active in opening up contacts with Eastern Europe, which resulted in Hungary's accession to membership in 1988.

WHAT DOES CABI DO?

Information

The computerised database on research in agriculture and related disciplines contains abstracts of 2,500,000 scientific papers and other publications; 150,000 were added in 1990. CABI's 45 abstract journals make the contents of the database available to subscribers in 166 countries. Abstracts added to the database since 1984 are now available on CD ROM which is already in use in 40 countries.

Identifications

CABI international biosystematic institutes provided identifications of organisms of agricultural and economic importance for scientists in 86 countries in 1990. In the same year the International Institute of Biological Control (IIBC) supplied natural enemies totalling more than 144,000 individuals of 63 species to 15 countries.

/mf3

Training

CABI training courses were held at locations around the world, during 1990; in all more than 370 students from 83 countries received training from CABI.

NEW CABI INITIATIVE

A 'Partnership Facility' has been set up to increase the provision of CABI's services to developing countries. This is envisaged as "a rolling programme of projects and activities", prepared in consultation with developing countries, which international donor agencies can then select for funding.

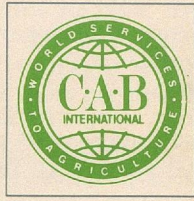
HISTORICAL NOTE

Established in 1929, CABI's name was changed from Commonwealth Agricultural Bureaux in 1986 to reflect the international status then being assumed. Its headquarters are located at Wallingford, Oxon.

-END-

Issued by: Jane Tweedy
 Press officer

March 1991



C·A·B International

World Services To Agriculture

C.A.B International

C.A.B International is an intergovernmental organization which provides information, scientific and development services on agriculture and related disciplines throughout the world. These services include:

- the world's largest bibliographic database of abstracts on agricultural research and development (CAB ABSTRACTS);
- access to the database online, on CD-ROM and through a range of abstract journals spanning every aspect of agriculture;
- customised database derivatives in the form of floppy discs, tapes and annotated bibliographies;
- publication of authoritative books;
- electronic publishing;
- diagnostic identification services for harmful and beneficial organisms;
- authoritative and up-to-date information on harmful and beneficial organisms (including biosystematics, distribution, biology, ecology and information on pest management);
- field surveys of pests and natural enemies and advice on the assessment of economic and environmental impacts;
- biological control programmes;
- assistance in establishing and maintaining international, national or local reference collections and appropriate biosystematic support services;
- provision of appropriate training in all of these subject areas.

C.A.B International is thus particularly well placed to provide practical assistance to the development of self-sustaining agriculture and to the conservation of the environment.

CABI is perhaps unique among intergovernmental organizations in earning more than 80% of its expenditure, largely from the sale of journals and other information services.

In addition to work undertaken for national institutions around the world, a growing part of the work of CABI supports the efforts of the Consultative Group on International Agricultural Research (CGIAR). Eight specialised journals are produced, under sponsorship by funding agencies, by arrangement with four CGIAR institutes, and distributed to thousands of research workers nominated by them. CABI's biocontrol and biosystematic work supports the research of many of the CGIAR institutes by identifying pests and exploring the use of natural enemies to control them.

Information Services

The information services provided by CABI constitute the world's largest and most respected database on research in agriculture, forestry and related disciplines including relevant social sciences and also aspects of human medicine. The machine-readable database contains more than two million abstracts of agricultural and related publications; another three million, accumulated prior to 1972, are available in printed form. Some 130,000 abstracts, prepared by CABI specialists from 10,000 serial publications as well as reports, books and conference proceedings, are added each year.

The information in the database is made available in printed and machine-readable forms. Fifty abstract journals cover most topics in agriculture and related fields. In total, almost 30,000 volumes of journals are distributed each year to 10,000 subscribing institutions all over the world. A current awareness service, based on the most recent input to the database, is provided to subscribers according to their own research profiles or in standard profiles designed by CABI. The database can be searched online and its contents are also available in machine-readable forms, such as magnetic tape and CD-ROM.

This flow of information is essential to enable scientists to keep abreast of the ever-expanding volume of relevant research. For scientists in isolated institutions or in poor countries, CABI abstracts can be a lifeline – in some cases the only scientific journals they receive. Recognising this, several international institutions have sponsored the publication of specialised journals, such as Wheat, Barley and Triticale Abstracts, for distribution in developing countries.

The information services are carefully managed to combine economy of operation with the use of efficient computer technology. They are self-supporting and contribute towards the cost of CABI's other services to agriculture.

Scientific Services

These services are based on the three biosystematic institutes (Entomology, Mycology and Parasitology), which are centres of excellence for research and identification of organisms of agricultural and economic importance; and the Institute of Biological Control. The correct identification of insect pests, parasites and disease organisms is vital to crop and livestock protection, as well as to effective plant quarantine and export control. Each year the three biosystematic institutes identify 40,000 specimens. This work underpins the efforts of scientists throughout the world to control pests and diseases and increase agricultural production. It provides vital support to scientists concerned with the major food crops such as rice, wheat, maize, sorghum and cassava, as well as export crops such as cotton, coffee, cocoa and oil palm. Its scope also extends to animal production, forestry and fisheries and also to human health.

The accumulated experience of the Institutes is a major scientific resource which is increasingly called upon to support work related to pest management and the effects of micro-organisms in agricultural and other industries.

The scope of the biosystematic institutes can best be illustrated by a few selected facets of their activities:

- ◆ The Institute of Entomology examined more than 30,000 specimens in 1986–87 and provided identifications to almost 70 countries. Many of the identifications were provided for CGIAR institutes and for multilateral and bilateral development assistance projects.
- ◆ The Mycological Institute is the largest centre for systematic mycology in the world. It provides identification and biosystematic services for fungi and plant pathogenic bacteria based on a collection of over 300,000 dried specimens and more than 12,000 living micro fungi. In addition to its work for agriculture, the Institute carries out a wide range of industrial investigations and testing.
- ◆ The Institute of Parasitology provides an identification service for plant and animal parasites to agricultural, biological and medical scientists. The Institute also has a unit which is contributing to the effort to develop new drugs for the treatment of river blindness.

The Institute of Biological Control has its headquarters in UK and stations in Kenya, Pakistan, Switzerland, Malaysia and Trinidad. Its staff provide advice and information on biological control of insect pests and weeds, undertake research and implementation of projects and participate in integrated pest management programmes in association with other agencies. The Institute also provides intermediate quarantine facilities for the screening of biological agents being moved between tropical countries; such quarantine is essential to prevent the inadvertent introduction of pests and diseases.

The Institute has had some notable success in controlling noxious plant and insect damage to crops, saving growers many millions of pounds in return for a very small investment in research and propagation of control agents. With increasing environmental concern, there is renewed emphasis throughout the world on biological control and integrated pest management. The Institute is playing a vital role in this effort. It is leading the research efforts to find a biological control method to remove the threat of locust plagues.

Systems

The Systems Division provides information technology resources for all parts of the organization and has special expertise in information management and electronic publishing.

Its development programme aims at producing advanced information technology products and services, particularly those which can assist developing countries in meeting critical weaknesses in scientific support for their agriculture.

This includes the use of optical storage systems for information dissemination, particularly through CD-ROM technology, and the development in collaboration with CABI's scientific institutes of expert systems to support pest management programmes.

Development Services

Much of CABI's work has always been for the benefit of developing countries. To make it available more effectively, a new Development Services Division has been established. The Division plans and coordinates the application of multi-disciplinary inputs from various units of CABI in development assistance contracts.

The Division also assists in organizing and improving training programmes which are a significant and growing part of CABI's services, especially for developing countries.

The work of the Division enhances the value of the range of services which can be mobilised to meet the needs of agricultural development. Long-established in-house expertise is available in the following subjects:

- information technology;
- computerisation;
- entomology;
- mycology and plant bacteriology;
- animal helminthology;
- plant nematology;
- integrated pest management;
- biological control.

Additional expertise can be provided by associate organizations and specialist consultants.

Membership

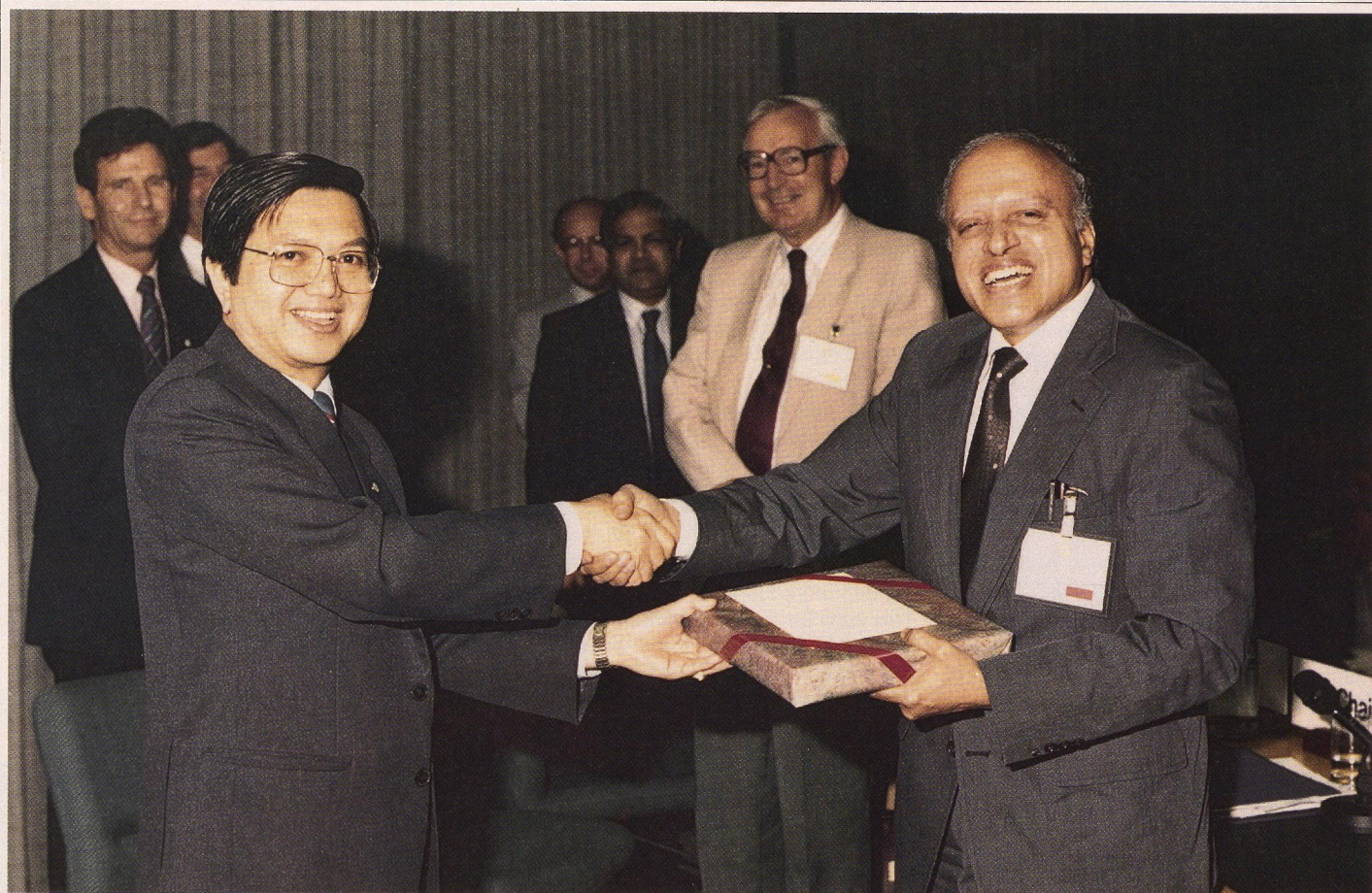
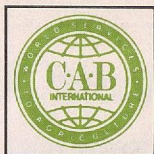
CABI has a long history as a Commonwealth institution under the name of the Commonwealth Agricultural Bureaux. This organization was established in 1928, but its earliest constituent part, the Bureau of Entomology, goes back to 1913. Membership was confined to governments within the Commonwealth. In 1985, the 29 members adopted a new constitution with membership open to any interested government.

This action was motivated by a recognition that the services provided by CABI are used by countries all over the world. Abstract journals, and other information services, are sold throughout the world. The biosystematic institutes provide identifications to more than 60 non-Commonwealth countries.

Consultation with a number of countries interested in membership is proceeding and one has already acceded to the Agreement.

Further information can be obtained from the Director General:

C.A.B International, Wallingford, Oxon OX10 8DE, UK.



Chairman of CAB International's 1990 Review Conference, Dr M S Swaminathan, right, is presented with a gift of appreciation by the Vice Chairman, Dato Wan Jaafar bin Abdullah of Malaysia at the end of the five-day meeting. Also in the photograph are, left to right: Director General, Don Mentz; Director, Administration, Tim Martin; Director of the International Mycological Institute, Professor David Hawksworth; General Counsel, Daud Ilyas and Director, Scientific Services, Dr Dennis Greenland.

In five days of debate and discussion, the conference agreed radical changes to CABI's financial structure which will enable it to do more to meet the agricultural information and research needs of developing countries.

RC90 Special issue

CAB International held its 1990 review conference at the Queen Elizabeth II Conference Centre, London from 30 July to 3 August for representatives of its 29 member countries as well as observers from a further 30 countries and from a dozen international organisations.

The event was formally opened by Mrs Lynda Chalker, UK Minister of Overseas Development, and chaired by the eminent Indian agricultural scientist and environmentalist, Dr M S Swaminathan.

His Royal Highness the Duke of Edinburgh attended part of the first day of the meeting, listening to reports from the Director General and the Directors of Scientific Services, Information and Information Technology, before expressing some of his own views on the importance of sustainable agriculture and the place of biological control in it.

Agreed by conference . . .

CABI's plans . . .

- for greater financial self sufficiency
- to introduce the principle of 'fees for service'
- for phased reduction in membership contributions
- to prepare for charging for identification services after 1993
- to set up a Partnership Facility to help developing countries buy CABI services
- to replace the Governing Committee with a Governing Board of experts in their fields
- to make capital investments in the research institutes
- to step up research programmes concerned with sustainable agriculture, the environment and biological controls.