

XX AK BA VE ZA AA

BB AB BA BB BA

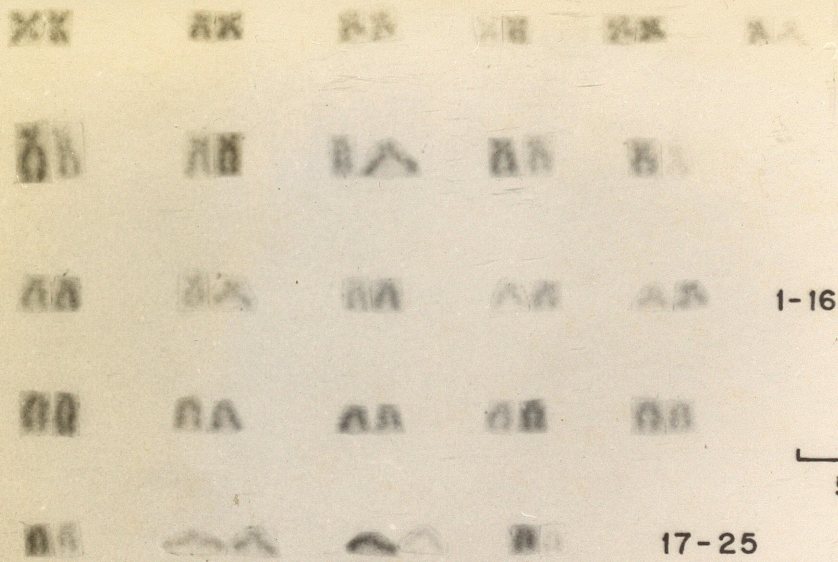
BB BA BA AB BA 1-16

BB BA BA BB BB

5μ

BB BA BA BB 17-25

Labeo calbasu female (2) (KIDNEY)



1-16

5μ

17-25

Labeo calbasu female (2) (KIDNEY)

XX AK BA HB BK AA

DB AB BA BA BA

DB AB AB AB AB 1-16

DB AB AB AB AB

5μ

DB AB AB AB 17-25

Labeo calbasu female (2) (KIDNEY)

YE AA EE EE EA EE

EE EE EE EA EE

EA EE EE EE 1-15

┌───┐  
5 μ

EE EE EE EA EE

EE EE EE EE EE 16-25

F<sub>2</sub> 'Calbahu' MALE (KIDNEY)

KK      LL      MM      NN      OO      PP

QQ      RR      SS      TT

5μ

UU      VV      WW      XX      1-14

YY      ZZ      AA      BB      CC      DD

EE      FF      GG      HH      II      15-25

Labeo calbasu male (1) (KIDNEY)

NOTE A HETEROMORPHIC PAIR

AA

AA

AA

AA

AA

AA

AA

AA

AA

AA

AA

AA

AA

AA

AA

1-15

AA

AA

AA

AA

AA

AA

AA

AA

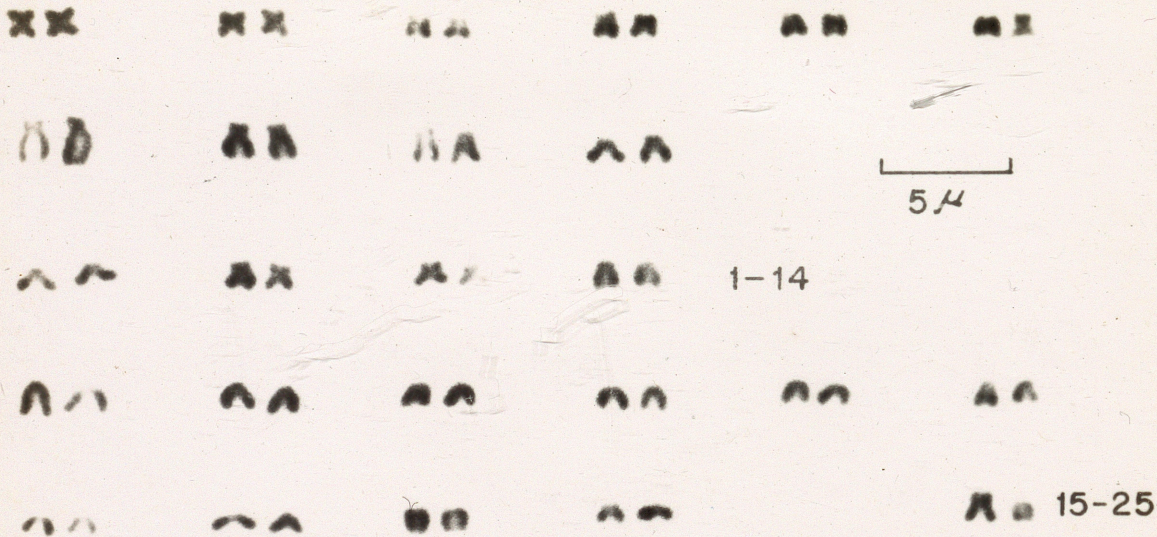
AA

AA

16-25

HYBRID II 'Rosu' FEMALE (KIDNEY)

5μ



Labeo calbasu (2) (KIDNEY)  
 NOTE A HETEROMORPHIC PAIR

XX      AK      AA      AB      AK      AA

OB      AB      BA      AB      BA

AA      BA      AA      AB      AB

1-16

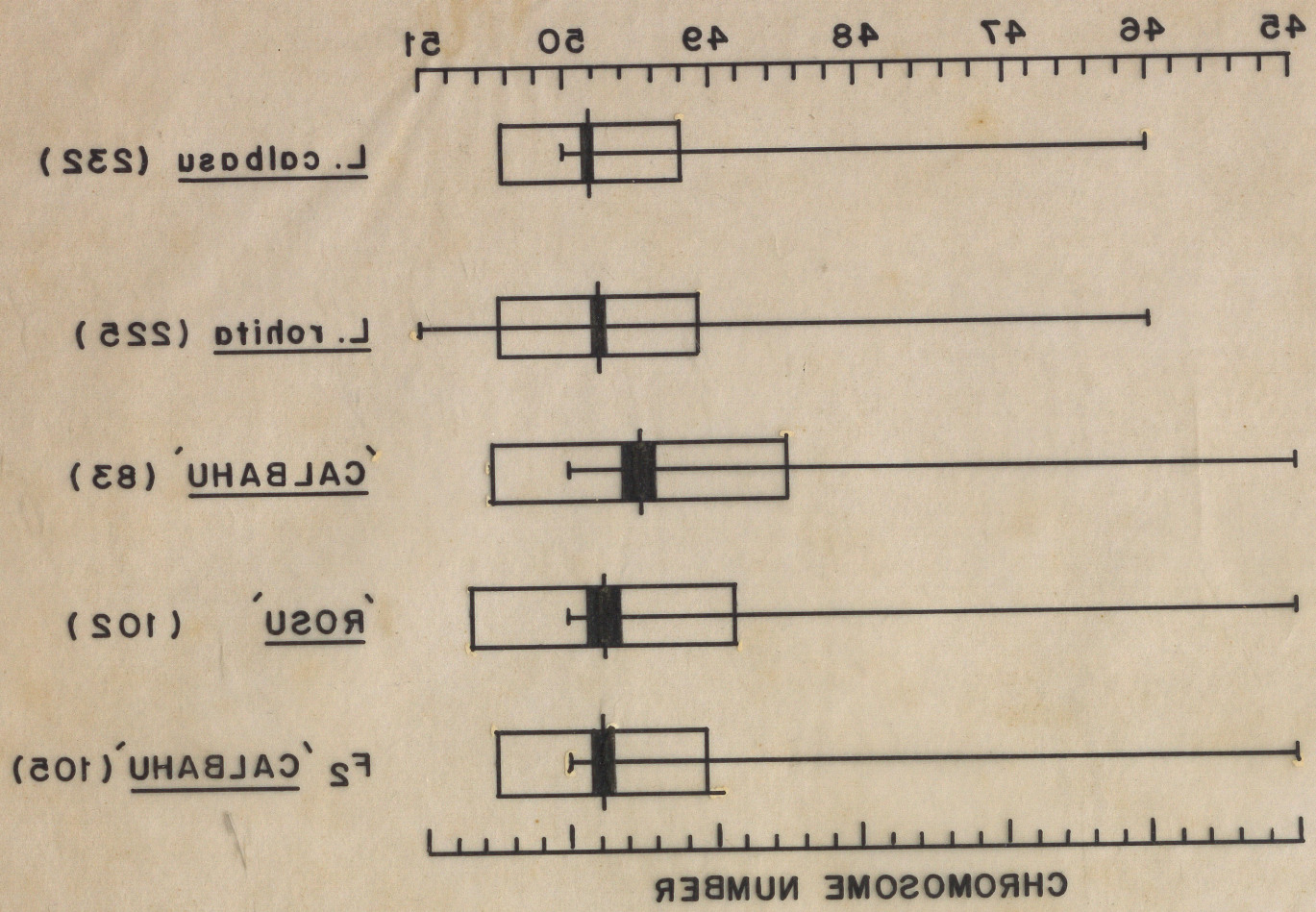
OB      AA      AA      OB      OB

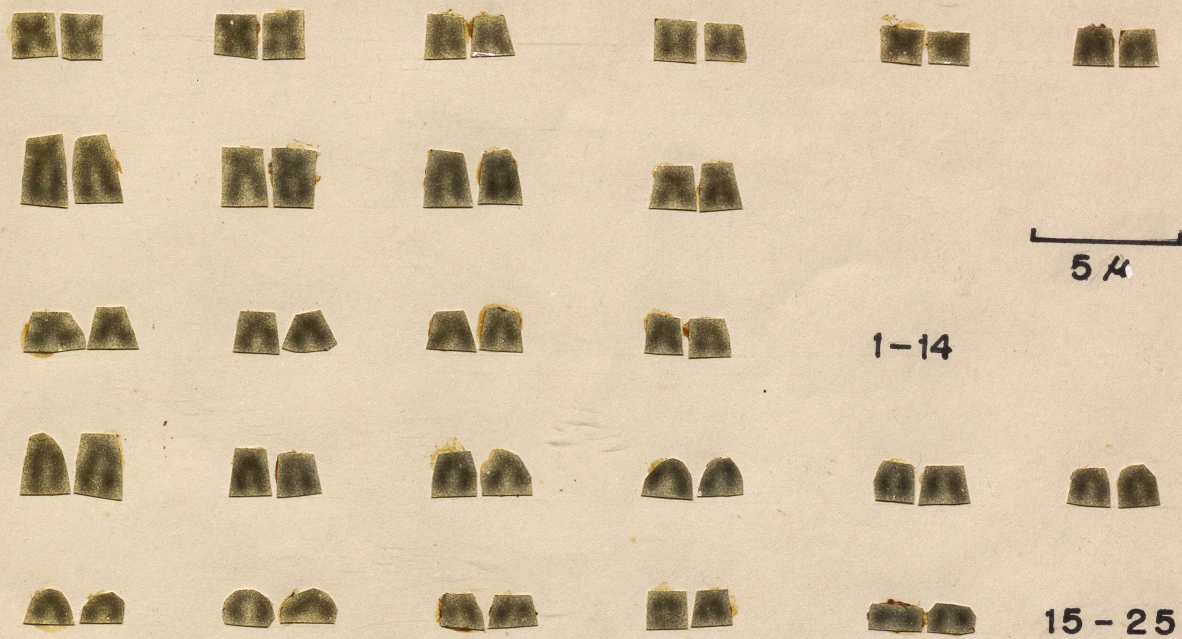
┌───┐  
5μ

AB      BA      BA      AB

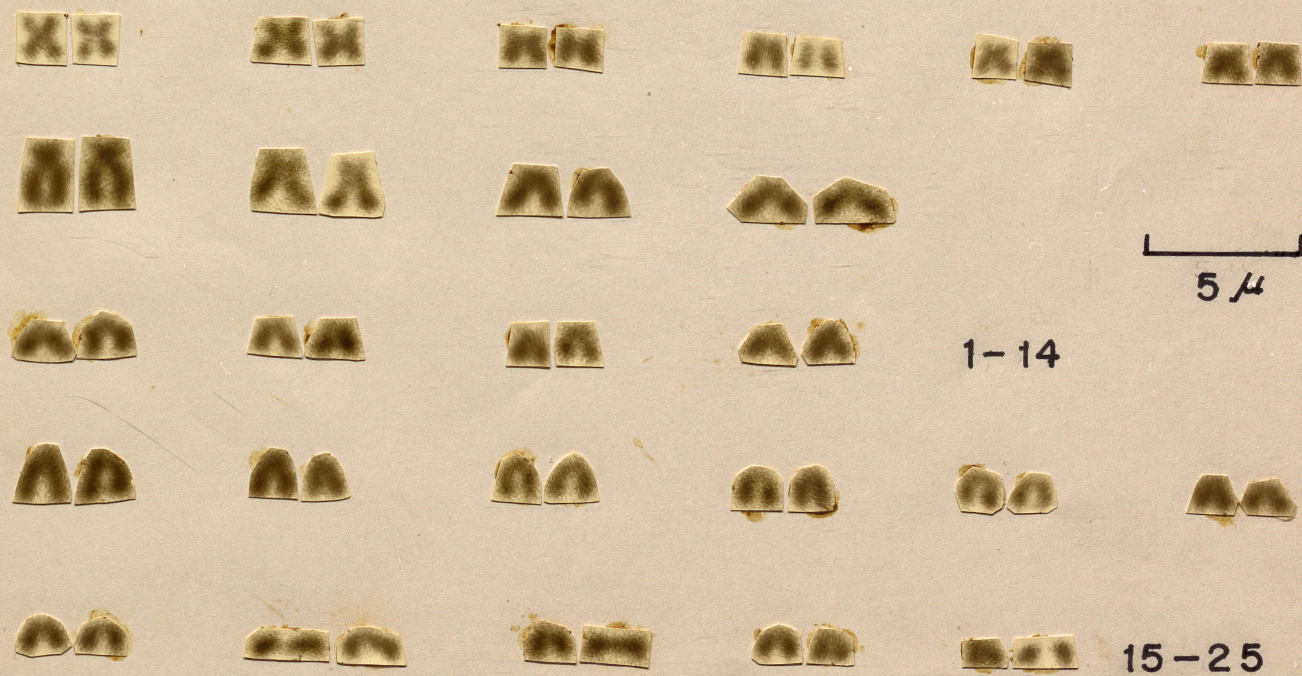
17-25

Labeo calbasu female (2) (KIDNEY)

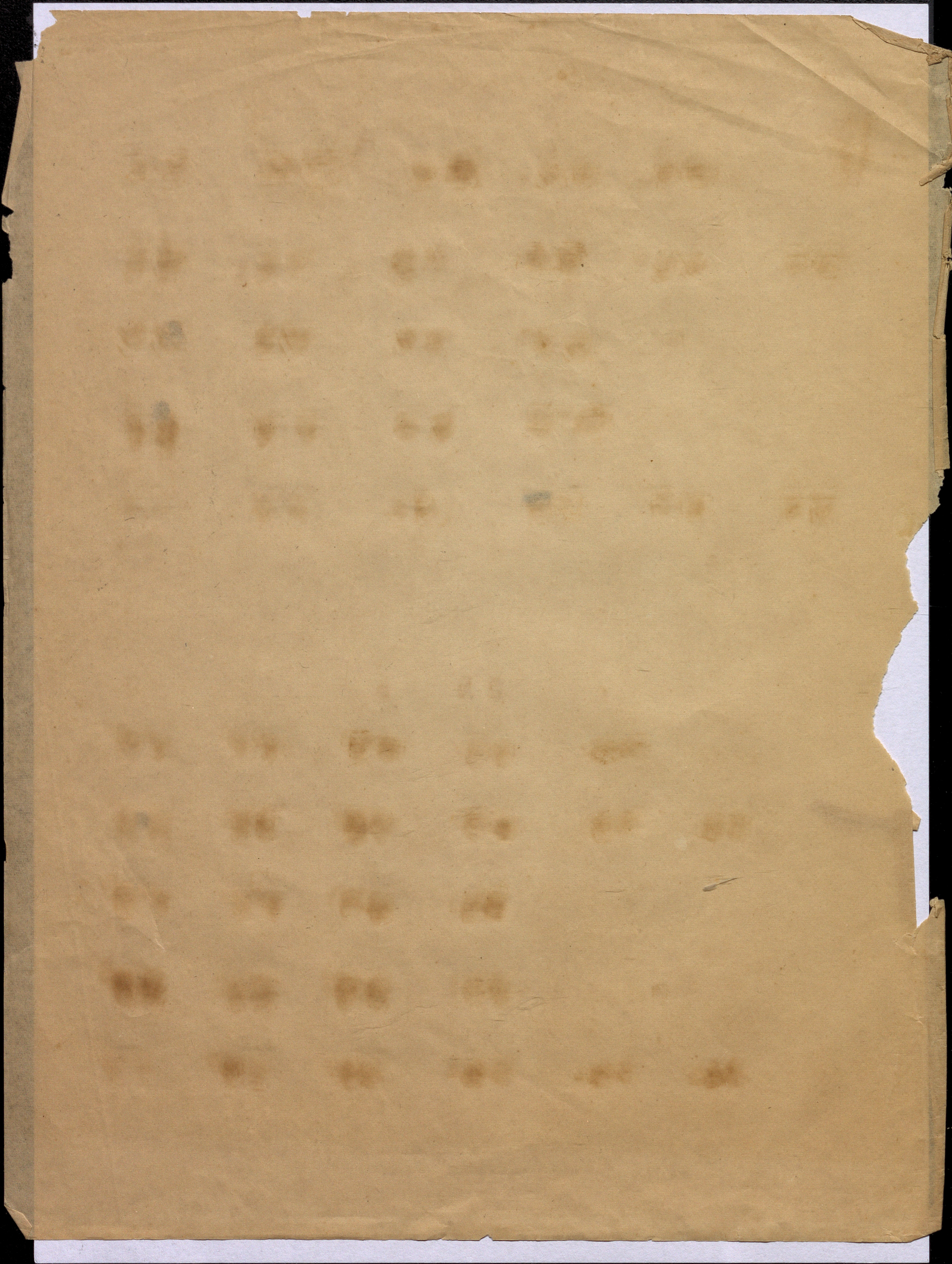




Labeo rohita FEMALE (KIDNEY)

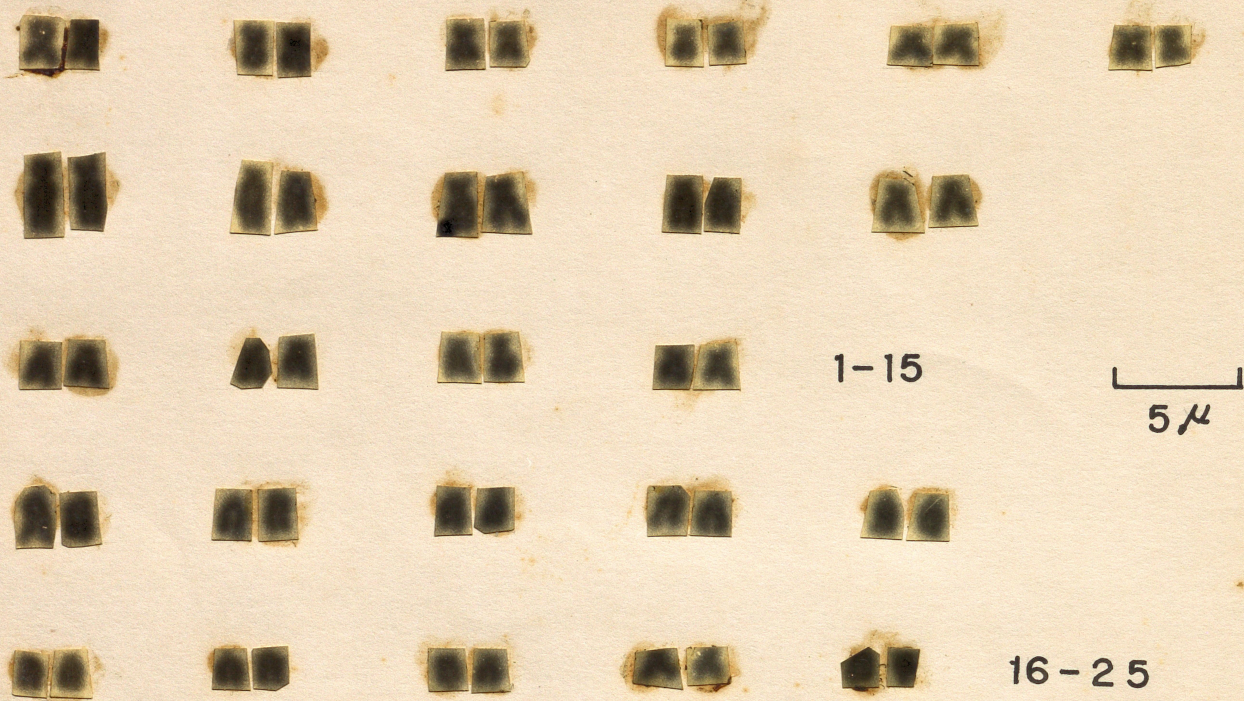


Labeo rohita MALE (KIDNEY)

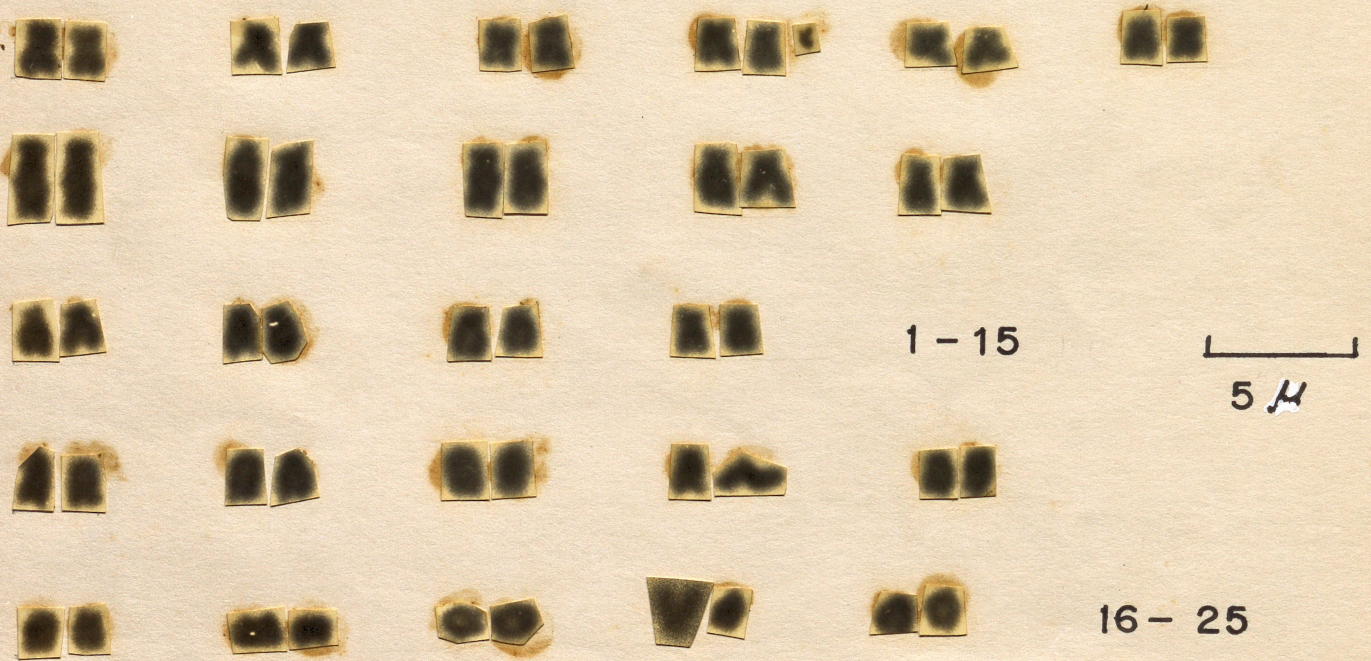


Species	Frequency of chromosome no. of							cell no. scored	Modal no.	NF	
	45	46	47	48	49	50	51				
Labeo calbasu	-	2	3	6	15	206	-	232	50	82 (1)	79 (2)
Labeo rohita	-	3	-	17	7	197	1	225	50	78 (M)	78 (F)
Hybrid I 'calbasu'	1	2	1	8	3	32	-	47	50	80 (F)	-
Hybrid II 'Rosa'	2	-	3	5	3	30	-	43	50	80 (F)	-

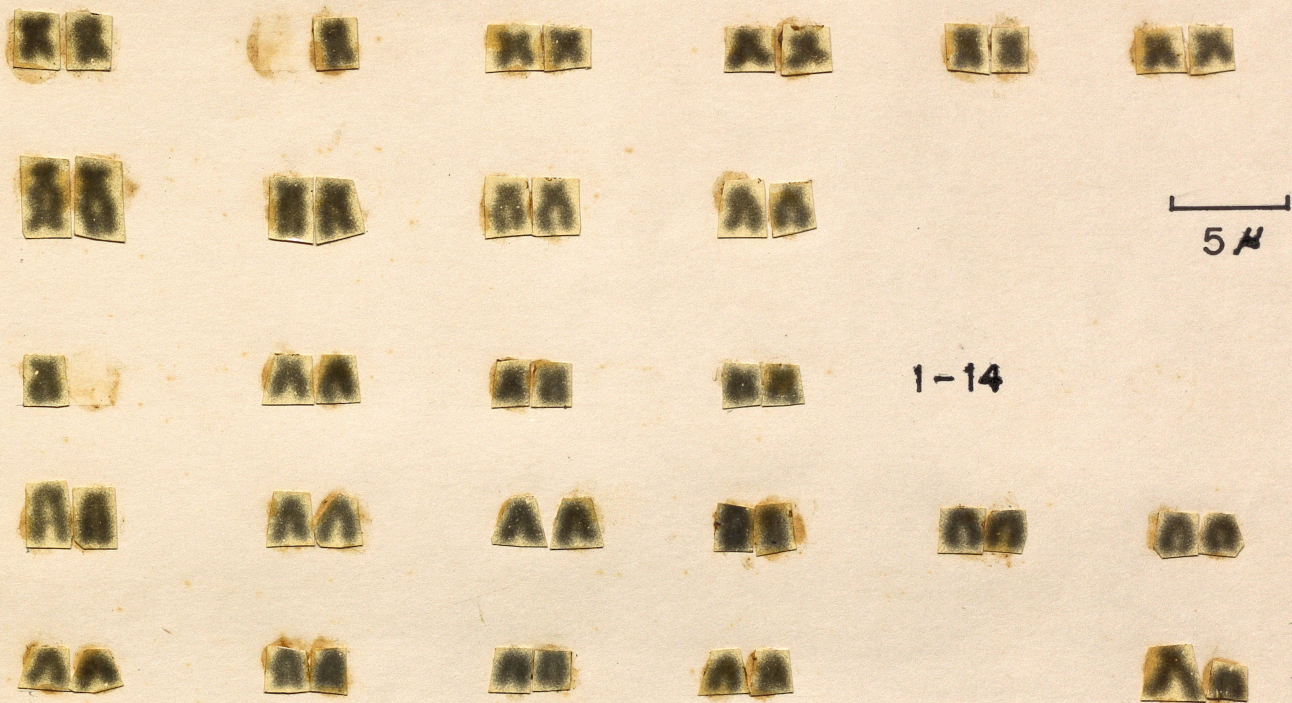
Table. 1. Distribution of Diploid chromosome no. and NF in Labeo calbasu, Labeo rohita and their hybrids.



F<sub>2</sub> 'Calbahu' FEMALE (KIDNEY)



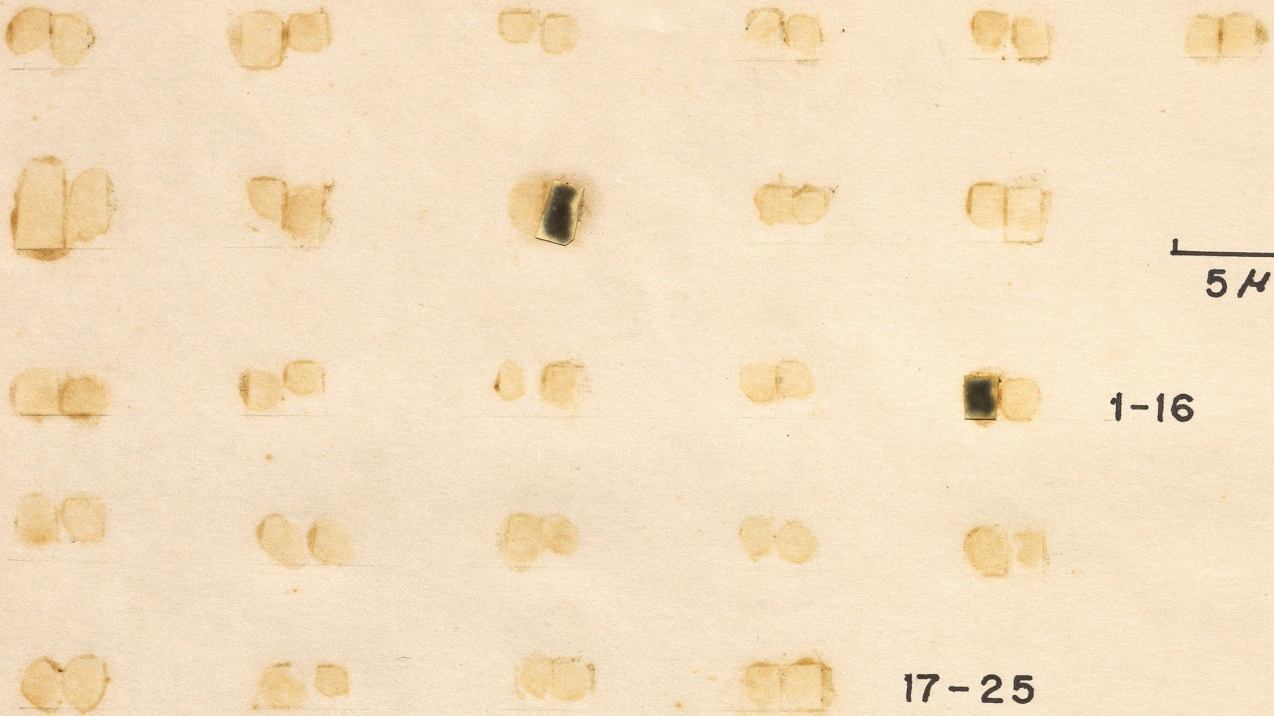
F<sub>2</sub> 'Calbahu' MALE (KIDNEY)



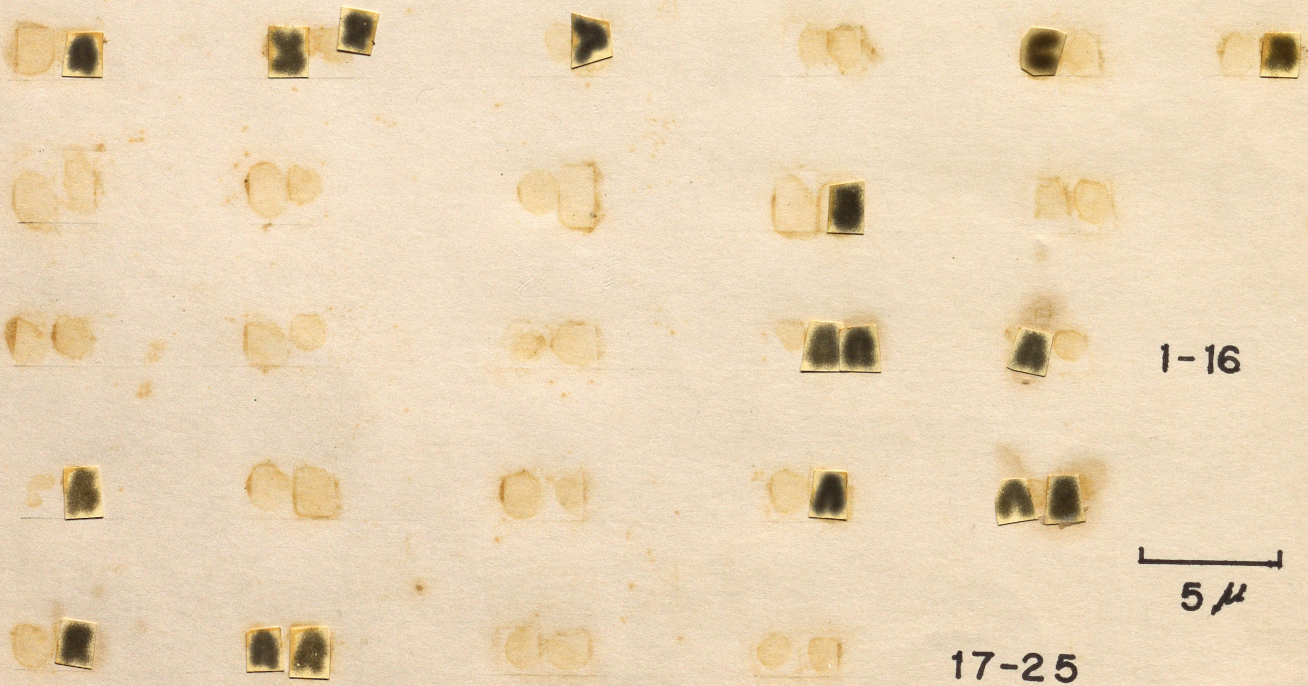
Labeo calbasu male (1) (KIDNEY)  
NOTE A HETEROMORPHIC PAIR



Labeo calbasu female (2) (KIDNEY)



Labeo calbasu male (2)



Labeo calbasu male (3)

U U

U U

U U

U U

V V

V V

V V

V V

V V

U U

U U

V V

U U

U U

V V

V V

U U

U U

V V

U U

U U

U U

U U

U U

U U

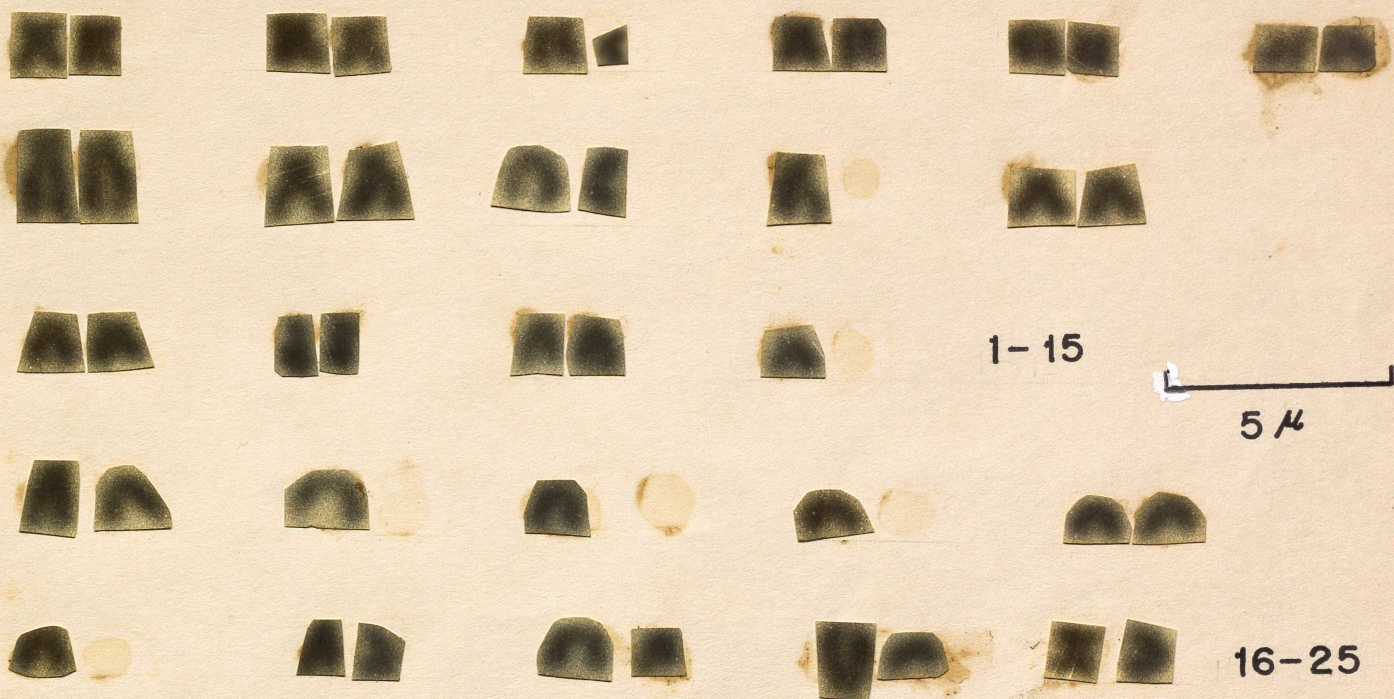


Labeo calbasu (1) (KIDNEY)

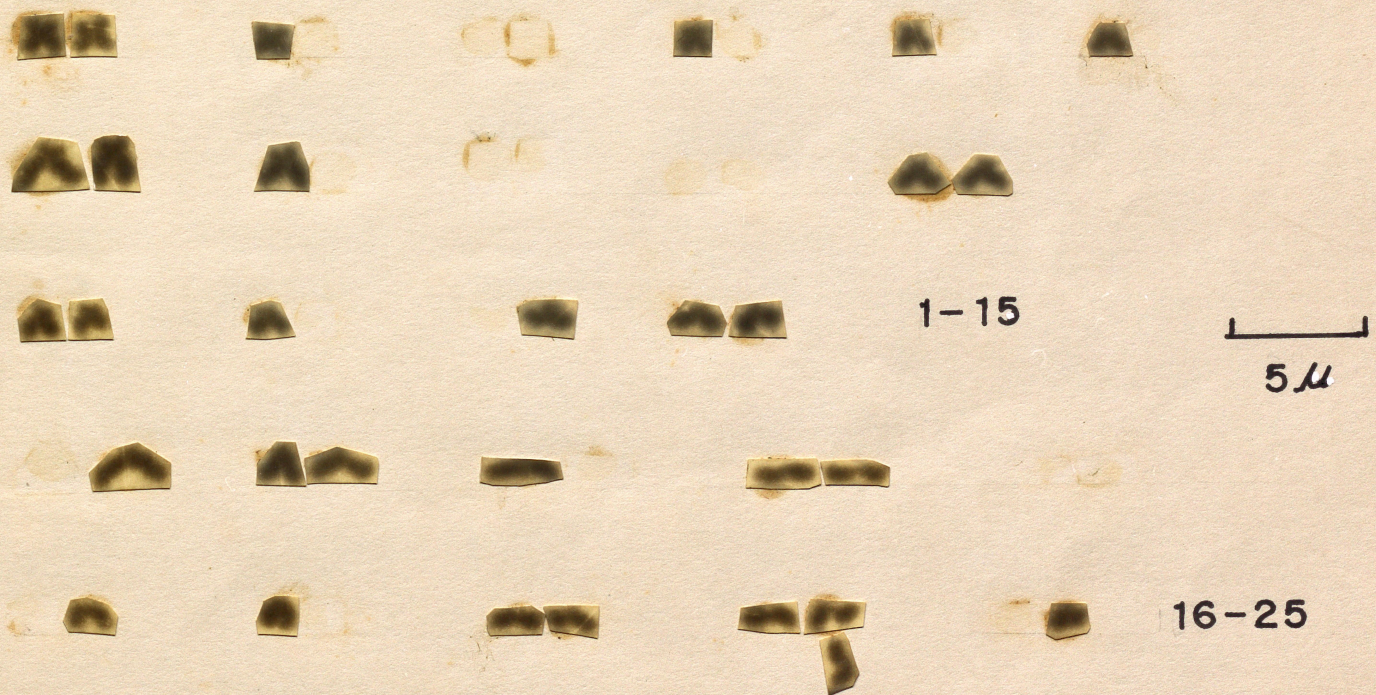


Labeo calbasu (2) (KIDNEY)

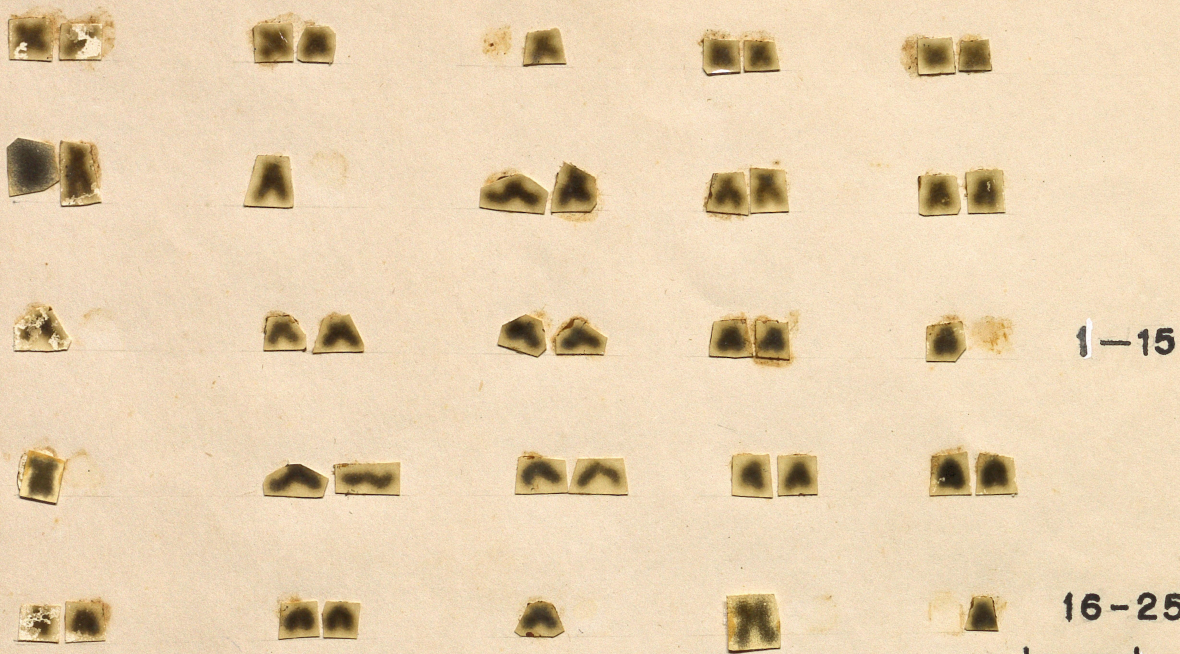
NOTE A HETEROMORPHIC PAIR



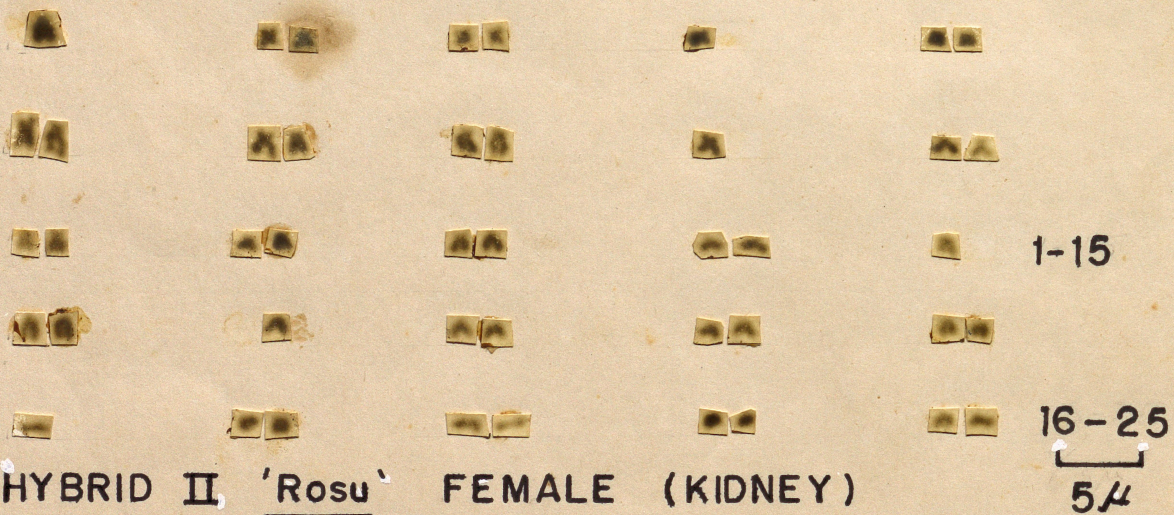
HYBRID I 'Calbahu' FEMALE ( KIDNEY )



HYBRID II 'Rosu' MALE ( KIDNEY )



HYBRID I 'Calbahu' FEMALE (KIDNEY)



HYBRID II 'Rosu' FEMALE (KIDNEY)