

GOVERNMENT OF INDIA

MINISTRY OF AGRICULTURE AND IRRIGATION

CENTRAL WATER AND POWER RESEARCH STATION,
KHADAKWASLA, - POONA - 24.

Presents

PHOTO ALBUM TO

Dr. M.S. SWAMINATHAN

Chairman

HIGH LEVEL REVIEW COMMITTEE

DATE :- 21st JULY 1976

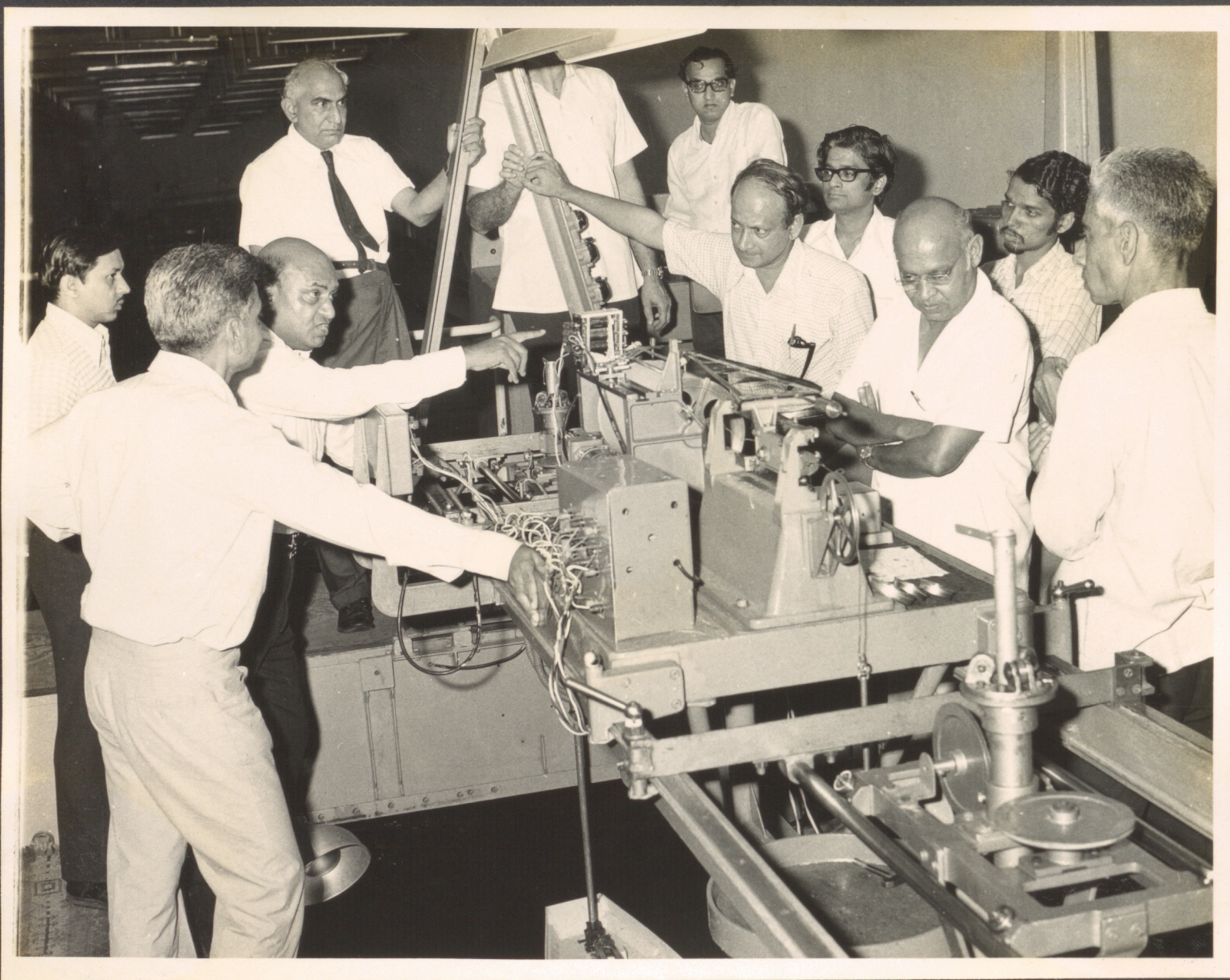
DIRECTOR
C.W. & P. R. STN.



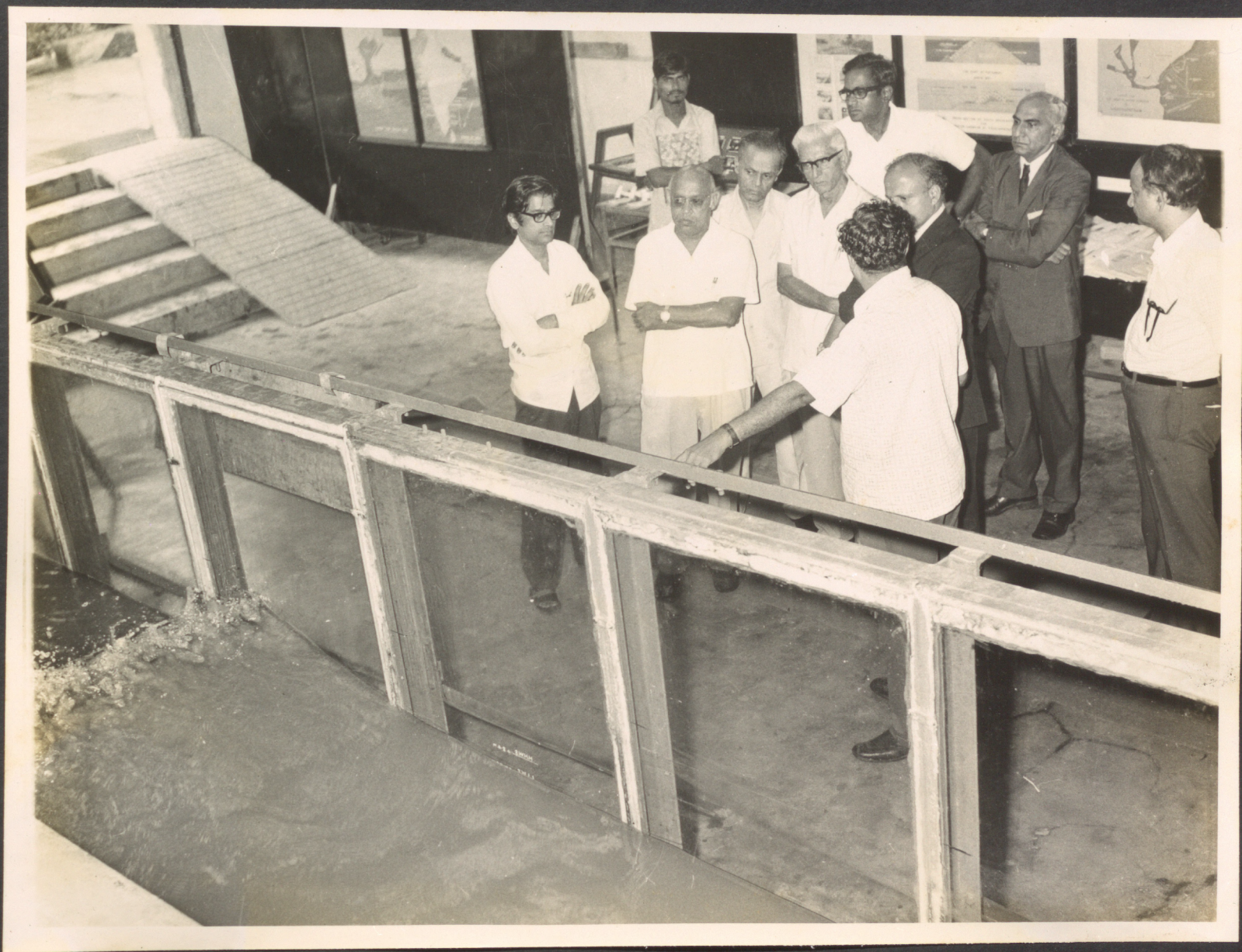
GROUP PHOTOGRAPH OF MEMBERS OF HIGH LEVEL COMMITTEE



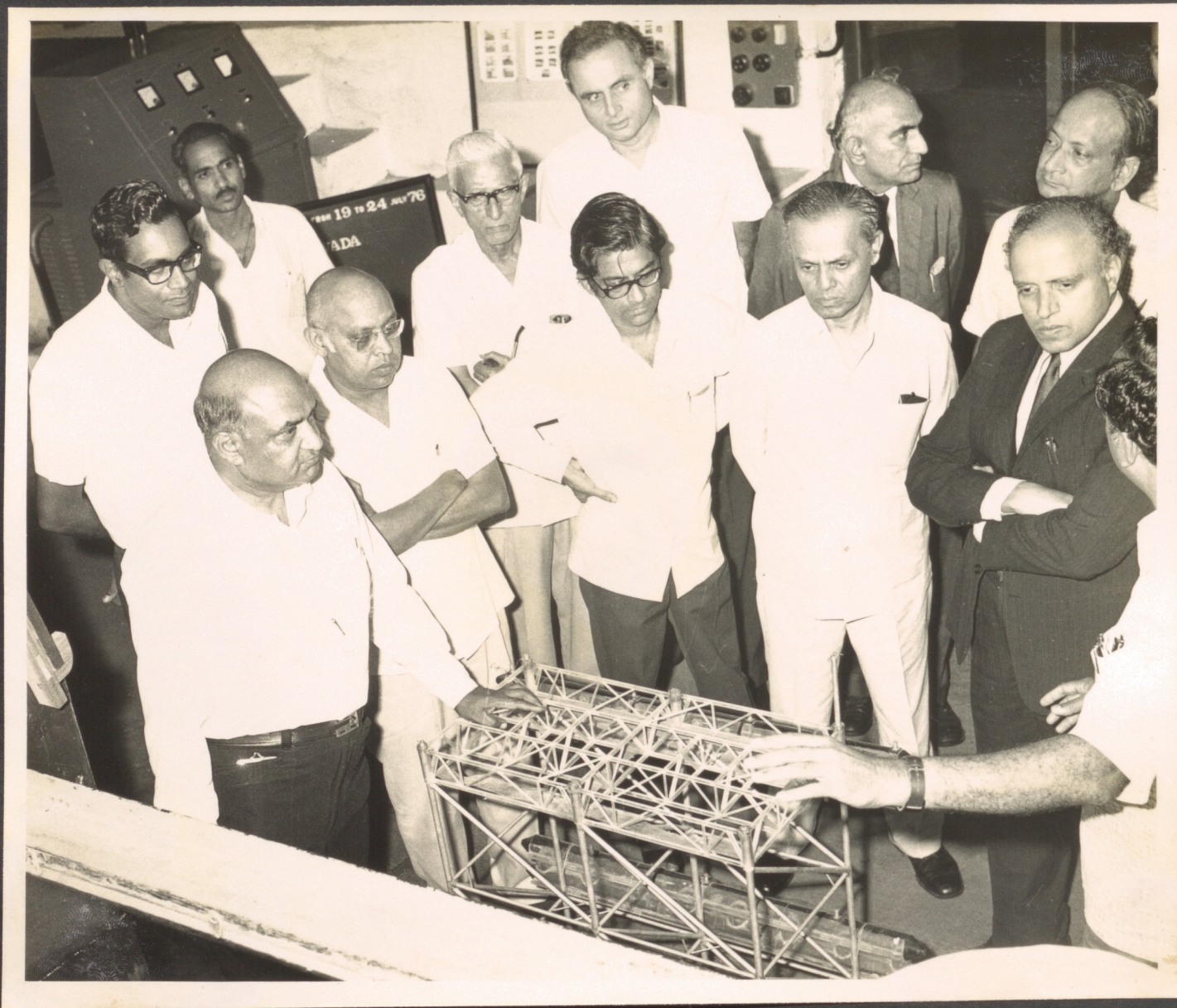
AT SHIP TESTING TROLLEY



DIRECTOR EXPLAINING THE FUNCTION OF
SHIP TESTING TROLLEY



AT WAVE STUDIES



DEMONSTRATION OF MODEL OF BLOCK FOR O.N.G.C. PLATFORM



STUDIES FOR STABILITY OF MIRKARWADA BREAKWATER



AT MADRAS ATOMIC POWER PROJECT INTAKE MODEL



AT GATES AND VALVES DIVISION



MODEL OF A GATE STRUCTURE BEING EXPLAINED



AT SATPURA MODEL
THERMAL POWER PROJECT



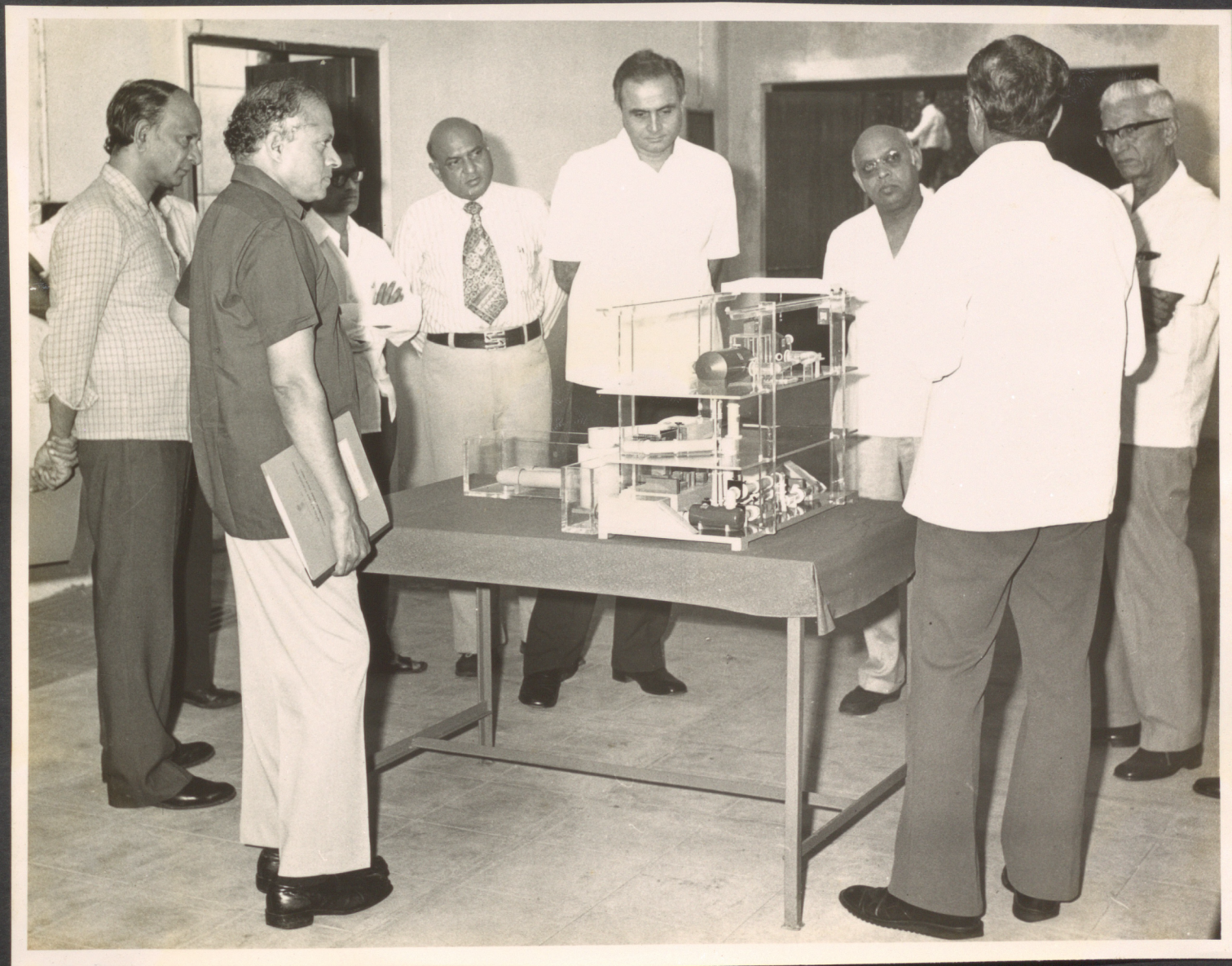
AT SATPURA MODEL



MEMBERS HAVING A LOOK AT BOMBAY PORT MODEL
NHAVA-SHEVA DOCK DEVELOPMENT



AT BOMBAY PORT MODEL



AT CAVITATION DIVISION



MEMBERS WATCHING CONTROL DESK AT CAVITATION DIVISION



AT SOIL AND CONCRETE DIVISION



DR. SWAMINATHAN EXAMINING A ROCK SPECIMEN



AT VIBRATION CHAMBER



MEMBERS WATCHING POLARIASCOPE AT P.E. DIVISION

