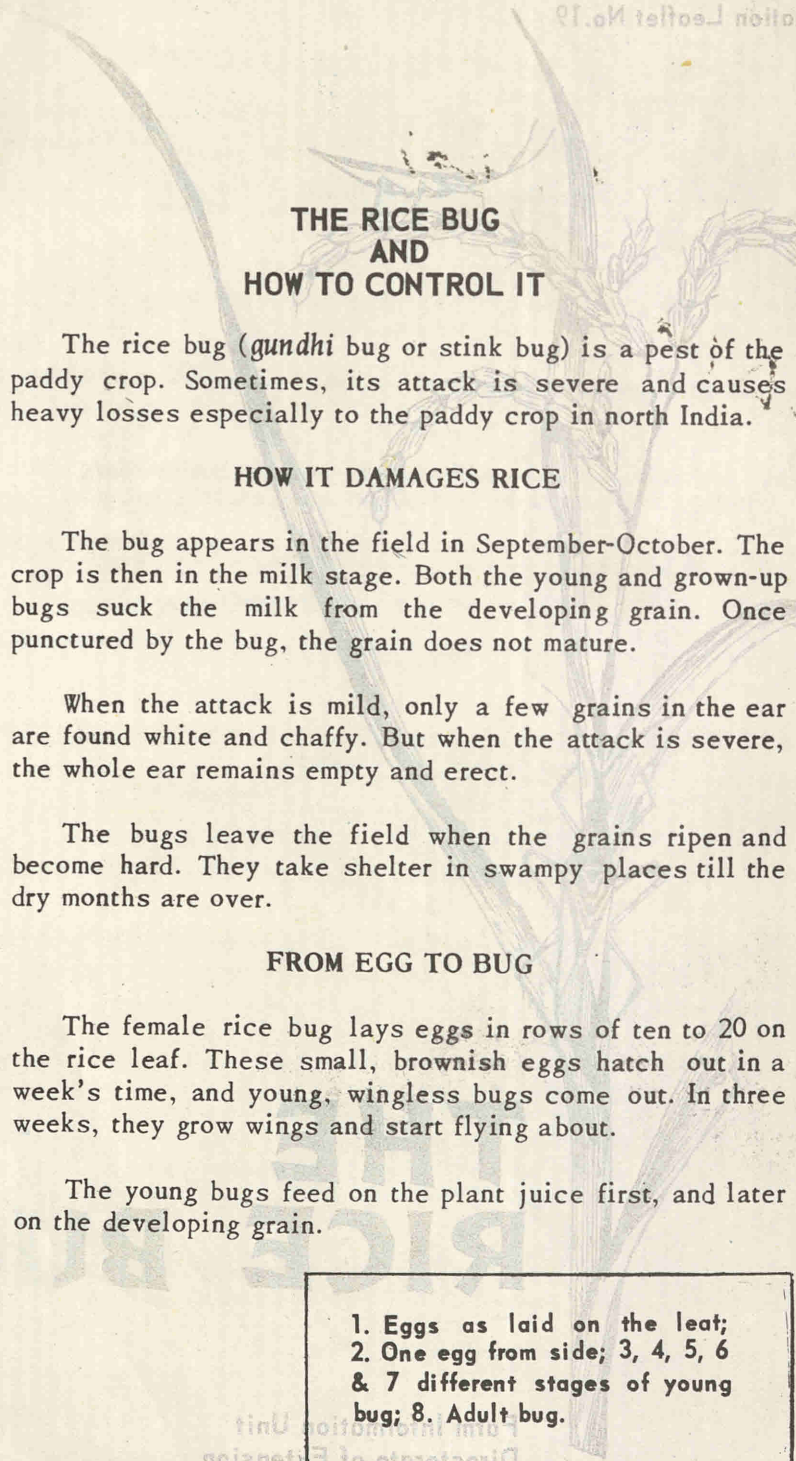


THE RICE BUG

Farm Information Unit
Directorate of Extension
Ministry of Food and Agriculture, New Delhi



THE RICE BUG AND HOW TO CONTROL IT

The rice bug (*gundhi* bug or stink bug) is a pest of the paddy crop. Sometimes, its attack is severe and causes heavy losses especially to the paddy crop in north India.

HOW IT DAMAGES RICE

The bug appears in the field in September-October. The crop is then in the milk stage. Both the young and grown-up bugs suck the milk from the developing grain. Once punctured by the bug, the grain does not mature.

When the attack is mild, only a few grains in the ear are found white and chaffy. But when the attack is severe, the whole ear remains empty and erect.

The bugs leave the field when the grains ripen and become hard. They take shelter in swampy places till the dry months are over.

FROM EGG TO BUG

The female rice bug lays eggs in rows of ten to 20 on the rice leaf. These small, brownish eggs hatch out in a week's time, and young, wingless bugs come out. In three weeks, they grow wings and start flying about.

The young bugs feed on the plant juice first, and later on the developing grain.

1. Eggs as laid on the leaf;
2. One egg from side; 3, 4, 5, 6 & 7 different stages of young bug; 8. Adult bug.

Department of Biosciences

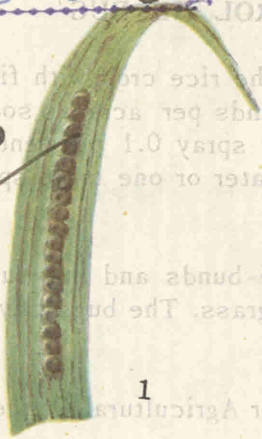
Student's Library

Biology/Zoology

Acc. No. 511-12a (129)

HOW TO CONTROL

SCB 12



1



2

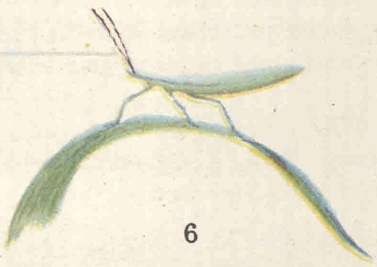


3

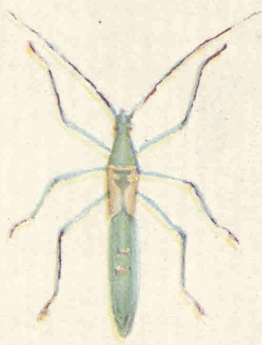
4



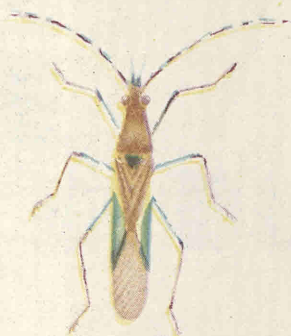
5



6



7



8

Jan. 60 7A

MINISTRY OF FOOD AND AGRICULTURE
GOVERNMENT OF INDIA
NEW DELHI

Price 10 Naye Paisa

The bug gives out a foul smell. It flies about from field to field at night. It is attracted to light.

HOW TO CONTROL THE BUG

To control the bug dust the rice crop with five to ten per cent BHC at 20 to 25 pounds per acre as soon as the bugs are seen on the crop or spray 0.1 per cent 'Endrin' (8 ounces in 100 gallons of water or one table spoonful in one kerosene tinful of water).

It also helps to keep the bunds and the surrounding area of the rice fields free of grass. The bugs may breed in these places.

Contact your Gram Sevak or Agricultural Officer for any help you need.