

Abbreviations used

(1)

R = Resident

B = Breeding

C = Common

LM = Local Migrant

U = Uncommon

S = Stray

GREBES

1. Little Grebe (*Podiceps ruficollis*)

R ~~B~~

PELICANS

2. Grey or Spotted-billed Pelican (*Pelecanus philippensis*)

R ~~B~~

CORMORANTS and DARTER

3. Little Cormorant (*Phalacrocorax niger*)

R

4. Darter or Snake Bird (*Anhinga rufa*)

R

HERONS and EGRETS

5. Pond Heron (*Ardeola grayii*)

R

6. Purple Heron (*Ardea purpurea*)

R

7. Grey Heron (*Ardea cinerea*)

R

8. Cattle Egret (*Bubulcus ibis*)

R

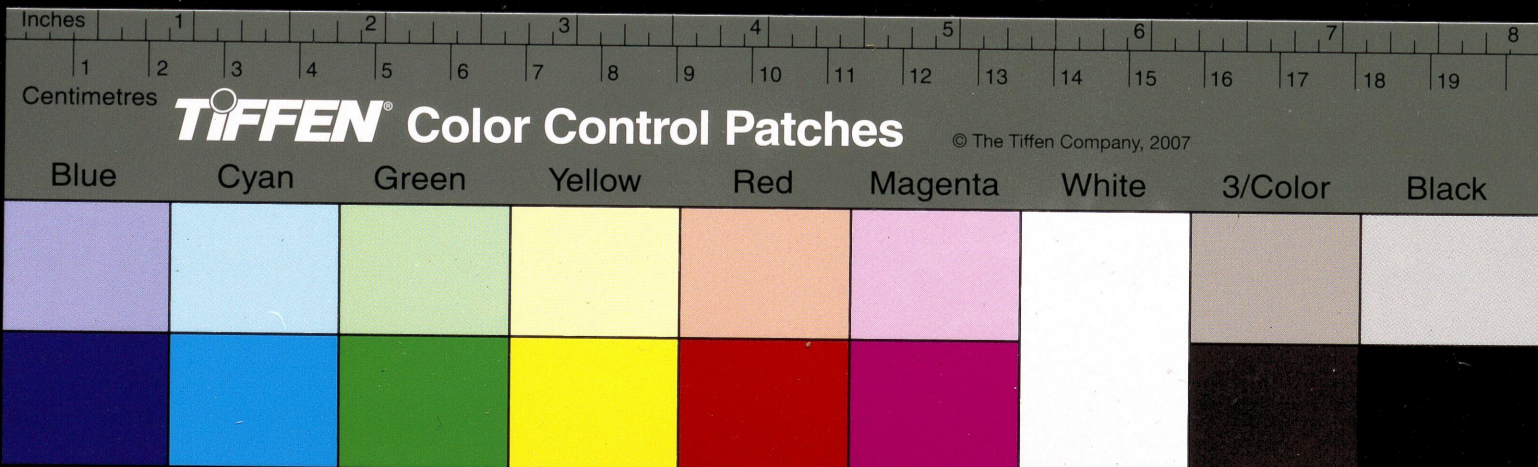
9. Smaller Egret (*Egretta intermedia*)

R

10. Little Egret (*Egretta garzetta*)

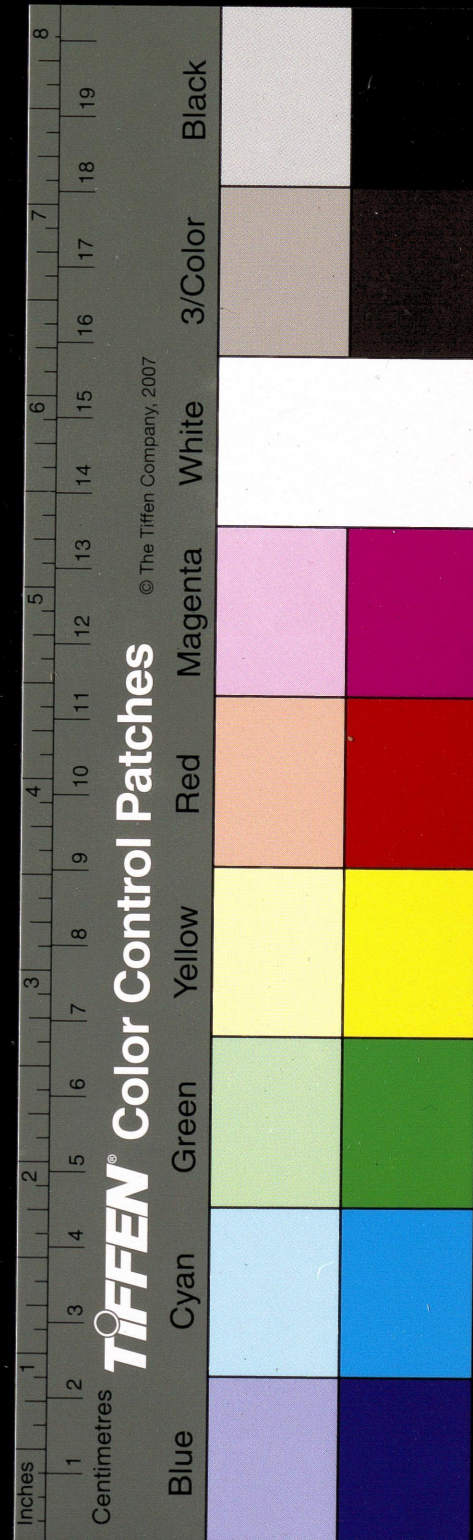
R

11.



PART - II

JOB NO.	M. L. SR. NO.	BY CONT/ COMMIT DELEV.	SCHD. REF.	DESCRIPTION	CLIENT	G.S.V. Rs.	INSP. BY	READY FOR DESP. BY	DESP. BY	REMARKS
5725	2447	MAR.81	AUG-01	Fluid Coupling DT-550 - 1 No.	HASTINA- PUR	14,820	OVER	OVER	46	
5660	2414	FEB.81	JUL-02	Chip Conveyor.	NATIONAL ENGG.	1,77,000	48	48	48	
5746		MAR.81	JUL-08	Electronic W/Bridge Platform Structure.	RAASI CEMENT	1,00,000	OVER	OVER	47	
5698	2532	FEB.81	JUL-26	Spares.	FCI	6,000	45	45	45	
5655	2312	MAR.81	JUL-27	Drive unit assly. for motorised calibration chain real.	NARMADA CEMENT	NIL	46	46	46	
5807		AUG.81	JUL-29	Belt Weigher (Mech) - 2 Nos.	SIMON CARVES	NIL	OVER	OVER	47	
4650	2712		JUL-64	Troughing Idlers for replacement (for Conv.No.61120/611220)	UPSCC	NIL	OVER	OVER	47	
				<u>ELECTRONICS :</u>						
5229/ 30		MAR.80	OCT-58	LAU System & Load Cells.	RAASI CEMENT	40,000	48	48	48	Subject to mech. components by WK-46.
5232		AUG-80	OCT-59	Loose Instruments.	OPIL	88,080	48	48	48	



STORKS

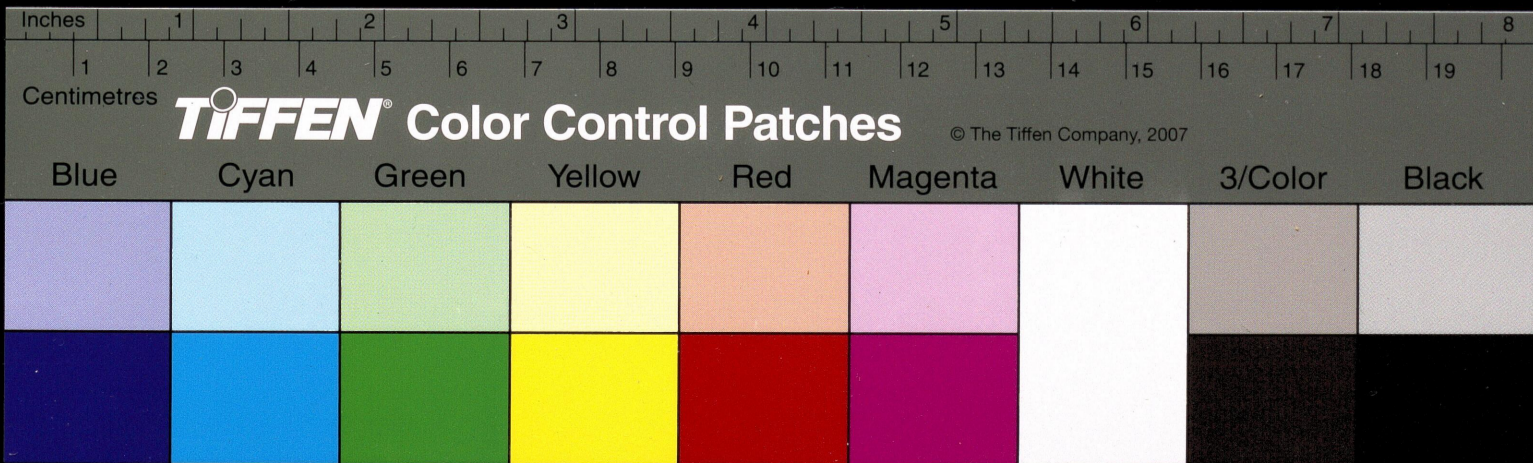
- 12 Whitenecked stork (*Ciconia episcopus*) R.
- 13 *Anasomus oscitans* (Openbill stork) R.

IBISES and SPOONBILL

- 14 *Platalea leucorodia* Spoonbill R
- 15 *Treskornis melanocepala* White Ibis R.
- 16 *Pseudibis pappilosa* Black Ibis R.

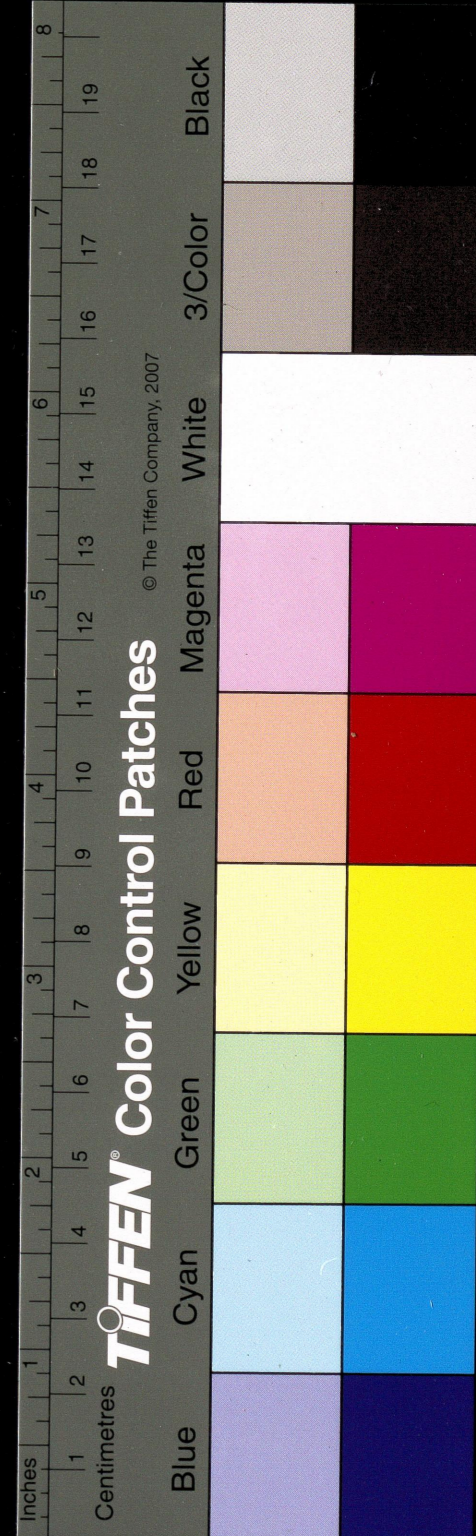
DUCKS and GEESE

- 17 Nukta or Comb Duck (*Sarkidiornis melanotus*) R
- 18 Cotton teal (*Nettion coromandelianus*) R
- 19 Spotbill or Grey Duck (*Anas poecilorhynchos*) R
- 20 Mallard (*Anas platyrhynchos*) M
- 21 ~~Shoveller~~ (*Anas clypeata*) M
- 22 Common teal (*Anas crecca*) M
- 23 Pintail (*Anas acuta*) M
- 24 Brahminy Duck (*Tadorna ferruginea*) M
- 25 Barganey or Blue winged Teal (*Anas querquedula*) M



PART - II

JOB NO.	M. L. SR. NO.	SUPV.	SCHD. REF.	DESCRIPTION	CLIENT	G.S.V. Rs.	INSP. BY	READY FOR DESP. BY	DESP. BY	REMARKS
5769	2913	MAR.81	OCT-27	Spare Rollers.	CCI(A)	6,350	OVER	45	45	
5742	2857	APR.81	OCT-29	Spares for B.Conveyors.	CCI	48,360	47	47	47	
5808	2573/72/ 2607/08/06	AS BA- RLY AS POSS- IBLE	AUG-30	Spares for W/F (Sr.No.28) (Sr (Sr.No.25)	CCI(AD) "	5,940 2,520	OVER 45	OVER 45	45 45	
5803	2916	JUL.81	OCT-39	Spares.	GSFC	7,700	48	48	48	
5775	2849	MAY.81	OCT-40	Spares for B/W (Mech)	MYSORE PAPER	2,600	OVER	OVER	45	
5857	2916 TO 2919/ 36/55/75/ 77/80/81/83/ 84/89/74/91/ 92/93/94/96/98/ 99/3000/09/31	OCT.81	OCT-41	Modification of Raw Meal Weigh Feeder.	MYSORE CEMENT	NIL	48	48	48	
5589	2102	DEC.80	AUG-29	Spares for E V.F. (Sr.No.9)	BALCO	8,800	45	45	45	
5774		SEP.81	AUG-38	Spare Idlers 40 Nos.	FERTI- PLANT	22,280	OVER	OVER	46	
5367	2592	MAR.81	AUG-41	Electronic W/Bridge Type 'E' Platform Structure - 1 No.	NARMADA CEMENT (MAGDALLA)	85,500	OVER	OVER	46	



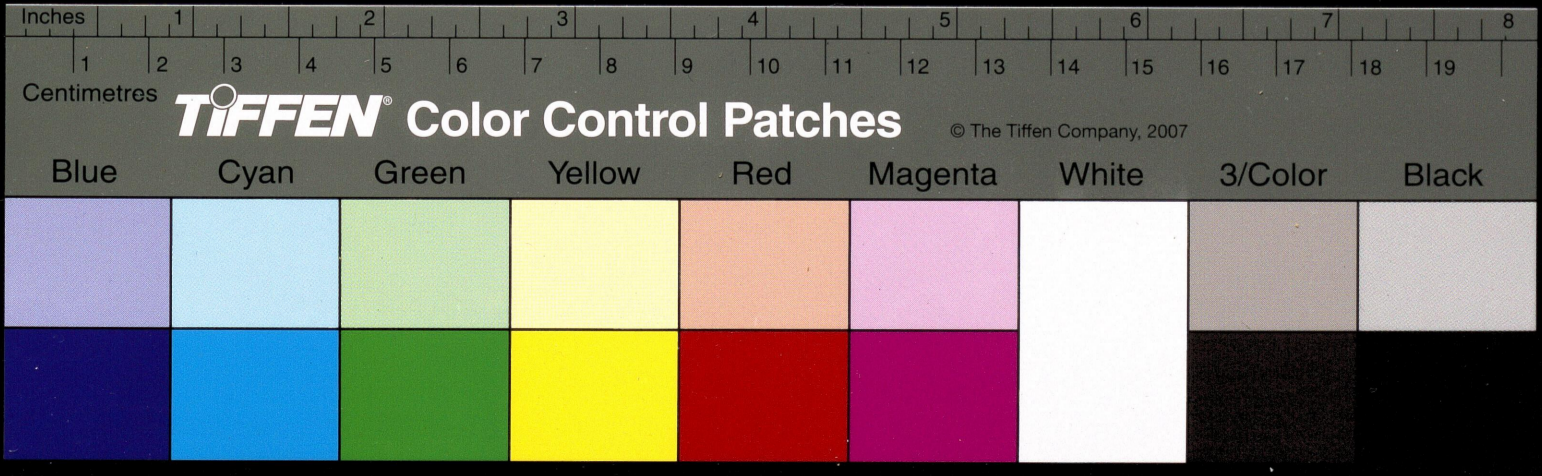
- 1. On all inland water bodies, village ponds, and roadside ditches though normally solitary at small parties, occasionally found in enormous congregations. An excellent diver.
- 2. In several well watered tracts of Andhra including Andhra Pradesh and Orissa.
- 4. Found in rivers, tanks, and tidal estuaries.
- 5. Found in the same habitat as the Little Cormorant.

6-11 : The Pond Heron is one of the most patient of birds. It waits endlessly ~~the patience~~ and long suffering ~~character of the Indian people.~~ It waits patiently for a morsel of food ~~at the foot of a tree within striking distance of its perch~~ ~~and then hops~~ ~~and while stationary it seems to be an entirely brown bird but as it flies the large white patch on the underside is prominently seen.~~ ~~becomes brown~~

26 Greylag Goose R
Rarer Rarer
 Barheaded Goose Rarer Indicus

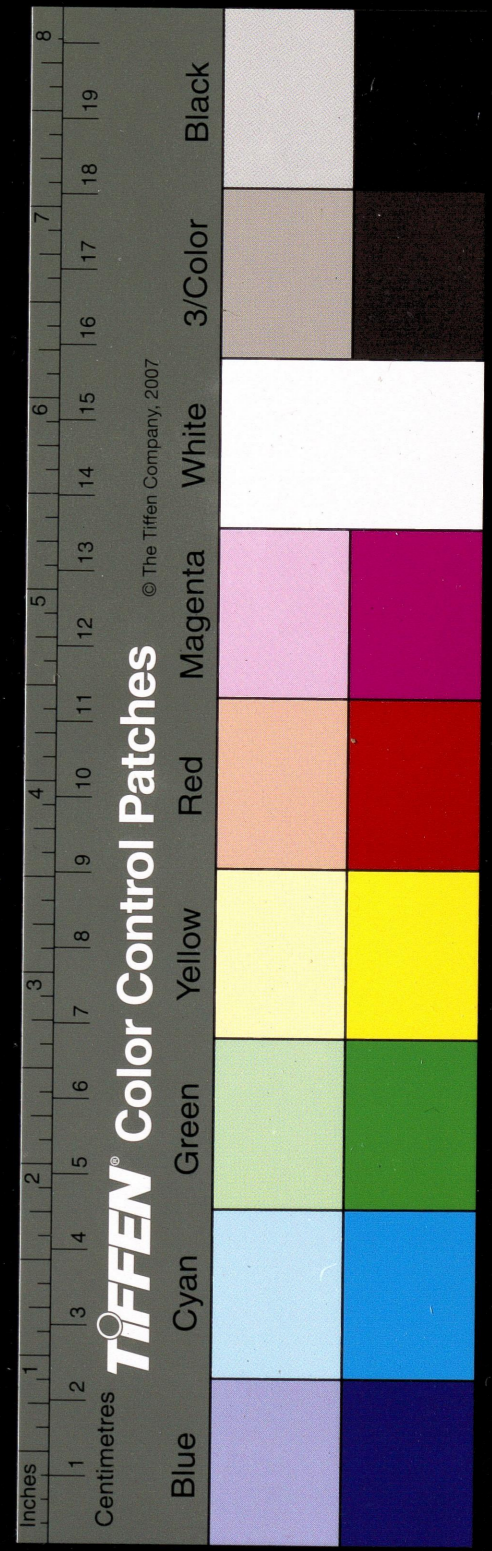
27 BIRDS OF PREY

- 28 Pariah Kite (Molurus melanurus) (R.)
- 29 Whitebacked Vulture (Gyps bengalensis) (R)
- 30 Egyptian Vulture (Neophron percnopterus) R
- 31 Black-winged Kite (Elanus caeruleus) R,
- 32 Marsh Harrier (Circus aeruginosus) M
- 33 Pale Harrier (Circus macrourus) M



PART - II

JOB NO.	M. L. SR. NO.	STATUS CONT. COMMIT. DELEV.	SCHD. REF.	DESCRIPTION	CLIENT	G.S.V. Rs.	INSP. BY	READY FOR DESP. BY	DESP. BY	REMARKS
5804	2726	SEP.81	OCT-44	Vertical Platform Hoist.	SARABHAI CHEMICALS	57,420	47	47	47	
5856	2909	OCT.81	OCT-45	Hanger Bearing Assembly.	SPIC	5,380	45	45	45	
5868	2890	OCT.81	OCT-46	Gravity Rollers.	GENERAL ENGG.	24,000	46	46	46	
5795	2662	AUG.81	OCT-47	Spares Annexure - A Sr.No. 1 to 7	GNFC	65,094	OVER	45	45	
				Annexure - B Sr.No. 1 to 6, 9 & 11.	"	26,582	OVER	45	45	
5848	2903	AUG.81	OCT-48	Gravity Rollers - 20 Nos.	ATUL PRODUCTS	1,900	OVER	45	45	
5854	2911	OCT.81	OCT-50	Spares for DCB-8 Chain Conv.	H & R JOHNSON	57,600	48	48	48	
5855	2912	OCT.81	OCT-51	Impact Rollers.	PAUSHAK	7,200	48	48	48	
5307			OCT-10	Rubberised Roller (Repairs) 16 Nos.	WESTER WORK	NIL	48	48	48	
5195	1628 1732	DEC.81	OCT-21	Decking Plate for Conv. BC-1 to BC-11.	SVG	83,800	OVER	45	45	
5267	1820/ 21	DEC.79	OCT-26	Spares for Weigh Feeders (Mech)	CCI(N)	6,250	46	46	46	



- 34 Shikra (*Accipiter badius*) R
- White-eyed Buzzard (*Buteo leisa*) R.
- 35 Tawny eagle (*Aquila rapax*) R.
- 36 Kestrel (*Falco tinnunculus*) M
- 37 Short-billed Eagle (*Circus gallicus*) R.
- 38 Crested Serpent Eagle (*Spilornis cheela*) R
- 39

Partridges, Quail, Peafowl

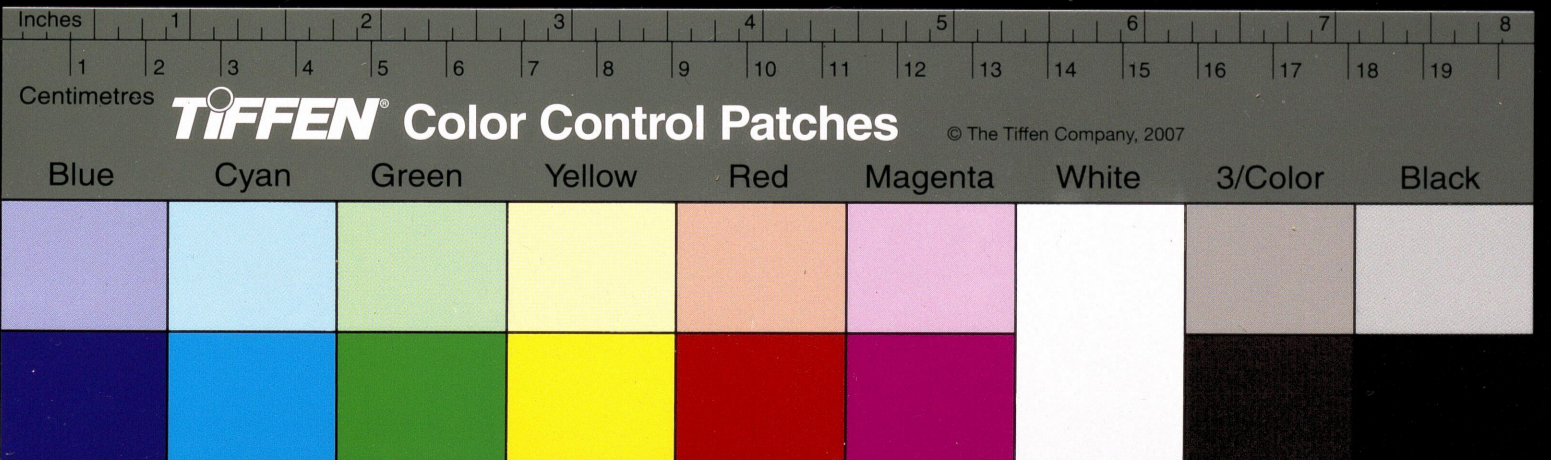
- 40 Grey Partridge (*Francolinus pondicerianus*) R
- Painted Partridge (*Francolinus pictus*) R.
- 41 Common Quail (*Coturnix coturnix*)
- 42 Common Peafowl (*Pavo cristatus*)
- 43

CRANES

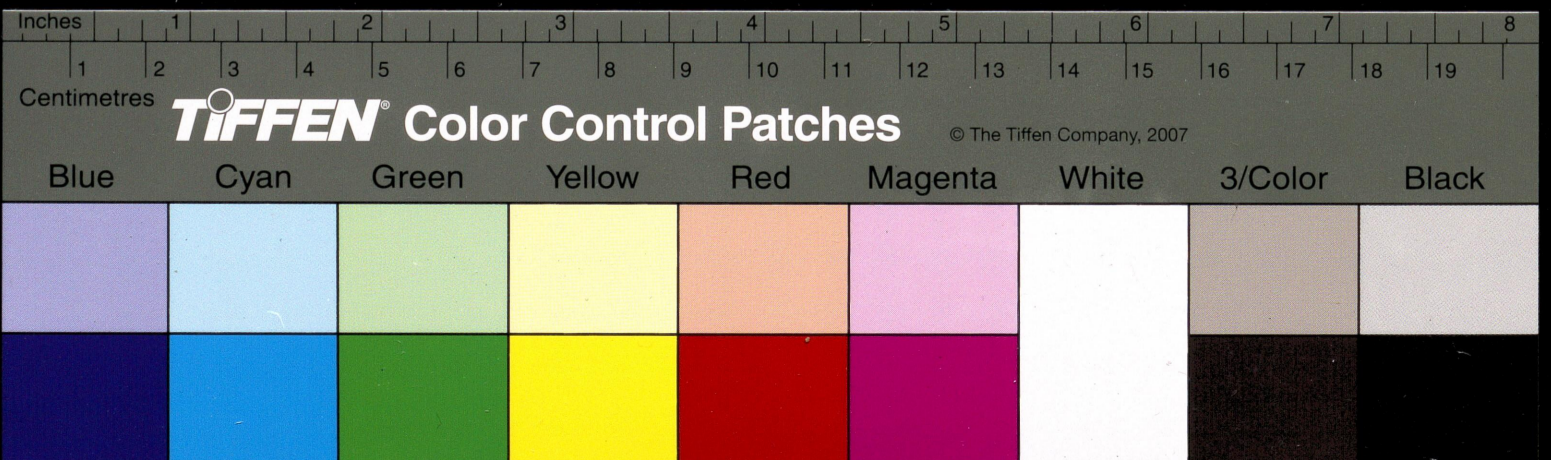
- 44 Sarus Crane (*Grus antigone*) R
- 45 Demoiselle Crane (*Anthropoides virgo*) M.

Rails and Coots

- 46 White-breasted Waterhen (*Amourornis phoeniceus*) R
- 47 Purple Moorhen (*Porphyrio porphyrio*) R
- 48 Coot (*Fulica bhā*)



JOB NO.	M. L. SR. NO.	START/CONT/COMMIT/DELIV	SCHD. REF.	DESCRIPTION	CLIENT	G.S.V. Rs.	INSP. BY	READY FOR DESP. BY	DESP. BY	REMARKS
5865	2879	OCT.81	OCT-52	Spring Flat.	KUDRES-MIXE	3,920	OVER	OVER	45	
5650	2610	DEC.80	OCT-53	Stright Boom Portable Pilers - 2 Nos.	SAURASH-TRA SALT	86,500	46	46	46	
5798	2637	JUN.81	OCT-54	Sack Pilers - DCA - 243 x 8 - 1 No.	FIBERTECH BNGG.	52,800	OVER	45	45	
5269	2668/53/2683/67	SEP.81	OCT-55	Flow Conv. & B. Elevator - 1 No. each.	DHARGAN-DRA CHEM.	2,46,000	47	47	47	
5680	2441	FEB.81	OCT-56	Platform Hoist - 1 No. <i>with Panel</i>	KHATAU MAKANJI	46,900	45	45	45	
5754	2763	MAY.81	SEP-11	Platform Hoist - 1 No. <i>with Panel</i>	MADURA COATS.	64,000	OVER	OVER	45	
5317	2471	DEC.80	AUG-14	Drive unit assy. for Conv. RB-9 - 1 No Conv. RB-12 - 1 No	IOC	12,000	OVER	45	45	
5781	2852	JUN.81	OCT-42	Spare Idlers.	TAMIL NADU	21,750	46	46	46	
5823	2888	AUG.81	OCT-43	Spare Idlers.	JYOTI LTD.	47,975	OVER	45	45	



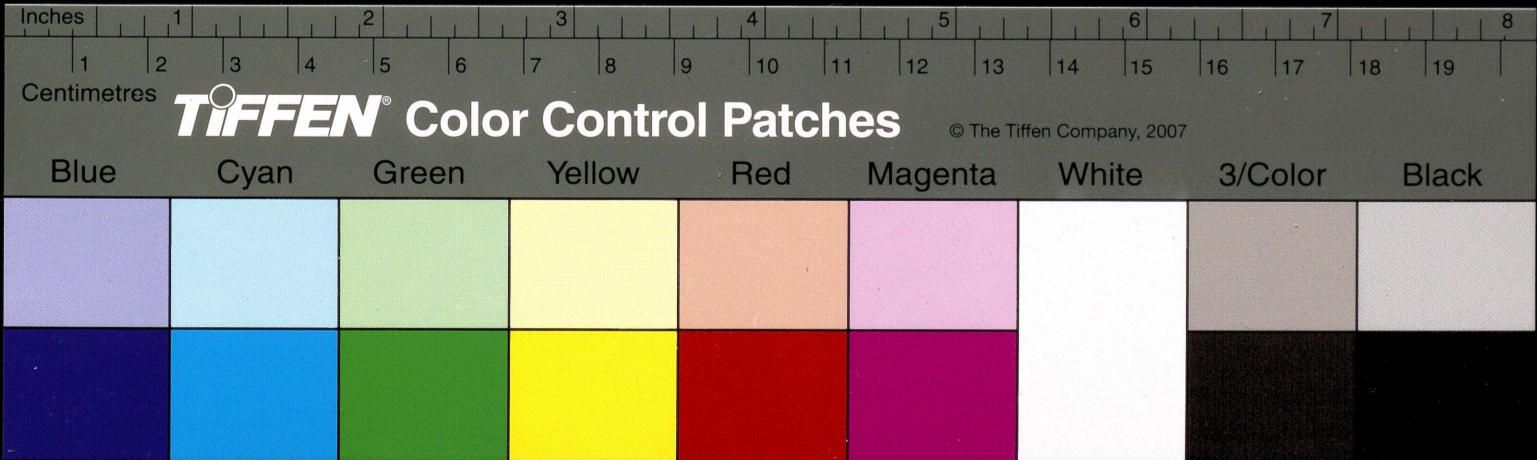
(5)

Jacanas

- 49 Pheasant-tailed Jacana (Hydrophasianus chirurgus) R
- 50 Bronzewinged Jacana (Metopidius indicus) R

PLOVERS and Sandpipers

- 51 Redwattled Lapwing Vanellus indicus R
- Yellowwattled Lapwing Vanellus molobaricus R
- 52 Little ringed Plover Charadrius dubius R
- 53 Common Sandpiper Tringa hypoleucos
- 54 Green Sandpiper Tringa ochropus
- 55 Wood Sandpiper Tringa glareola
- 56 Tunga totanus Redshank
- 57 Green shank Tunga nebulosa
- 58 Painted snipe Rostrotula bengalensis
- 59



PART - II

JOB NO.	M. L. SR. NO.	SUPV. CONT/COMMI/DELEV	SCHD. REF.	DESCRIPTION	CLIENT	G.S.V. Rs.	INSP. BY	READY FOR DESP. BY	DESP. BY	REMARKS
5743	2388	MAR. 81	AUG-04	Buckets for B.Elevator Sr.No.3 - 2 Sets.	WALLACE FLOUR-	16,000	OVER	OVER	45	
				Sr.No.5 - 2 Sets.	"	16,000	46	46	46	
5743	2500 2374 2542	MAR. 81	SEP-04	Drive unit assly.for B.Elevator Sr.No.1 - 2 Nos.	"	59,670	OVER	OVER	45	
				- 1 No.	"	29,835	OVER	45	45	
				Sr.No.2 - 1 No.	"	32,692	OVER	OVER	45	
				Sr.No.3 - 2 Nos.	"	58,296	46	46	46	G.Box by 81/11/07
				Sr.No.4 - 1 No.	"	13,626	OVER	OVER	45	
				- 1 No.	"	13,626	OVER	45	45	
				- 1 No.	"	NIL	OVER	45	45	without Fluid Coupling.
				Sr.No.5 - 6 Nos.	"	NIL	OVER	45	45	
				Fluid Coupling for B.Elevator Sr.No.4 - 1 No.	"	99,714	48	48	48	
				7 Nos.						
				Sr.No.5 - 6 Nos.						

