

**A BIBLIOGRAPHIC INDEX TO THE ORNITHOLOGY OF THE
INDIAN SUBCONTINENT**
(May 01)

Aasheesh Pittie

8-2-545 Road No 7, Banjara Hills, Hyderabad 500034, India. E-mail: aasheesh@hd1.vsnl.net.in

Dedication.

I dedicate this database to all those people whose lives have been changed by birds found in and around the Indian subcontinent, and who have taken the trouble to share their experiences, through various media, with others. I hope that this compilation contributes in facilitating the study of these wonderful co-habitators of planet Earth, and in the process, we learn a bit more on how to survive our own environmental follies.

Introduction.

When I began collecting and indexing references on the Ornithology of the Indian subcontinent way back in the late Seventies, I had not even dreamt that the database would evolve into its present form. Its mandate today is to record all that has been and will be written on the birds of the Indian subcontinent and the countries surrounding it. This database lists more than 18,000 works on the Ornithology of this area and is growing every day with the help of innumerable well-wishers. Some however stand out in their contribution and to these gentlemen I give special thanks. Suhel Quader introduced me to *Papyrus*¹ and its advantages and initially transferred my D-Base files into this software. Kumar Ghorpadé, Edward Dickinson, Tim Inskipp, Krys Kazmierczak and Siraj A. Taher, have been critics and friends and have over the years helped tune the database so much finer. To my wife Smriti and my children Prakriti and Prashast, who have always been puzzled by the amount of typing I do on the computer, thanks and gratitude, are trivial and insubstantial words that limit my feelings towards them. There are many things I'd like to say to these people and about them, but here let me just say, "Thank you for supporting this small project."

1. Acknowledgements.

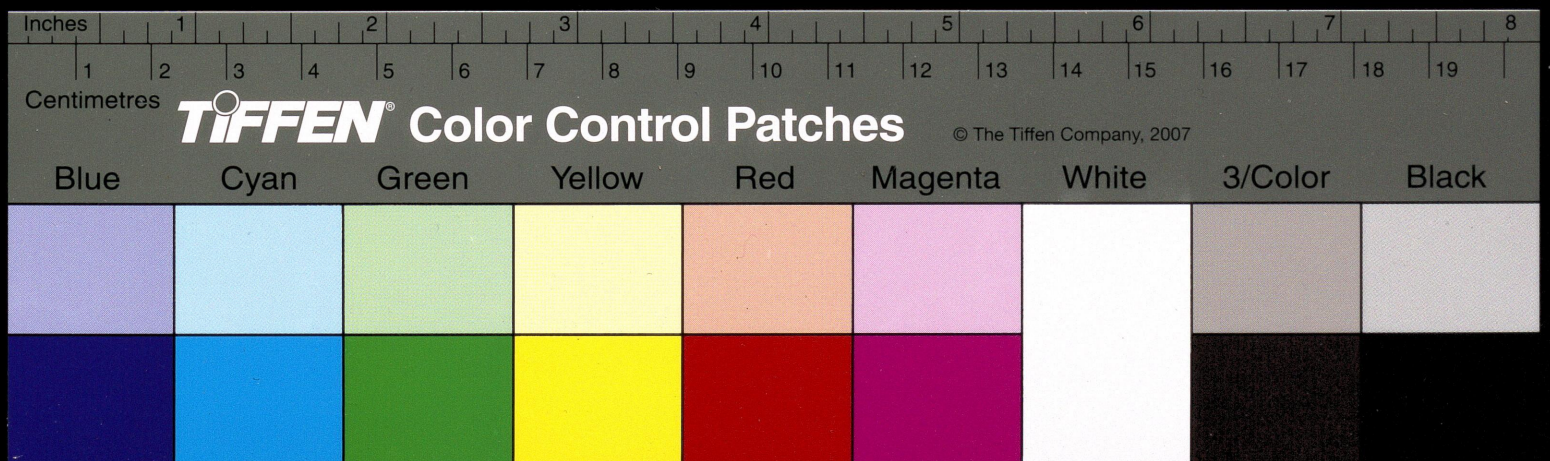
Some friends who helped with the database are:

Andrew Robertson
Bill Harvey
Bombay Natural History Society
library staff
Desmond Allen
Dhirendra Devarshi
Girish Kumar
Hashim Tyabji
Humayun Abdulali
Isaac Kehimkar
J.N. Prasad
Jafer Palot
Joe Tobias
Kamlesh Gandhi
Krishnadev Rao

Librarian and staff of the Osmania
University's Department of Zoology
library.
Paul Holt
Ragupathy Kannan
Rishad Naoroji
S. Sridhar
S. Subramanya
S.A. Hussain
S.G. Neginhal
V. Nagulu
V. Santharam
Vasudev Rao
Zafar Futehally

2. Installing and Running the Database.

- a. Your CD-Rom contains legal versions of *Papyrus Retriever*TM, "PAPR" and its documentation, "PAPRDOC", (as executable or application files), 8 files with the extension "BIB" and 4 MS Word document file with the extension "DOC".
- b. Create a new Folder called **INDIABIB** on your hard disc.



- c. Copy all files from the CD-Rom to this folder.
- d. Change the **PROPERTIES** of the files by removing their **READ ONLY** status. To do this, highlight all the files after they have been copied to the hard disc. Click the right button of your Mouse on any of the highlighted files. Left-click on **PROPERTIES** in the drop-down menu. In the resulting box, click on the tick-mark against **READ ONLY**. It will disappear. Click on **OK** to save.
- e. To run the programme, double click on the application **PAPR.EXE**.
- f. The programme will open and run in **DOS** mode.
- g. You should maximize the size of the screen for convenience by clicking the button on the top right hand corner of the Papyrus screen.
- h. For unresolved problems contact me at aasheesh@hdl.vsnl.net.in.

3. What does the index cover?

- a. This keyword-based bibliographic index covers the Indian Subcontinent, which for the purposes of this work consists of the areas within the political boundaries of the following countries: Afghanistan, Bangladesh, Bhutan, Burma, India, Maldiv Islands, Nepal, Pakistan and, Sri Lanka. In addition, Tibet is also covered.

4. How to use the programme—brief summary.

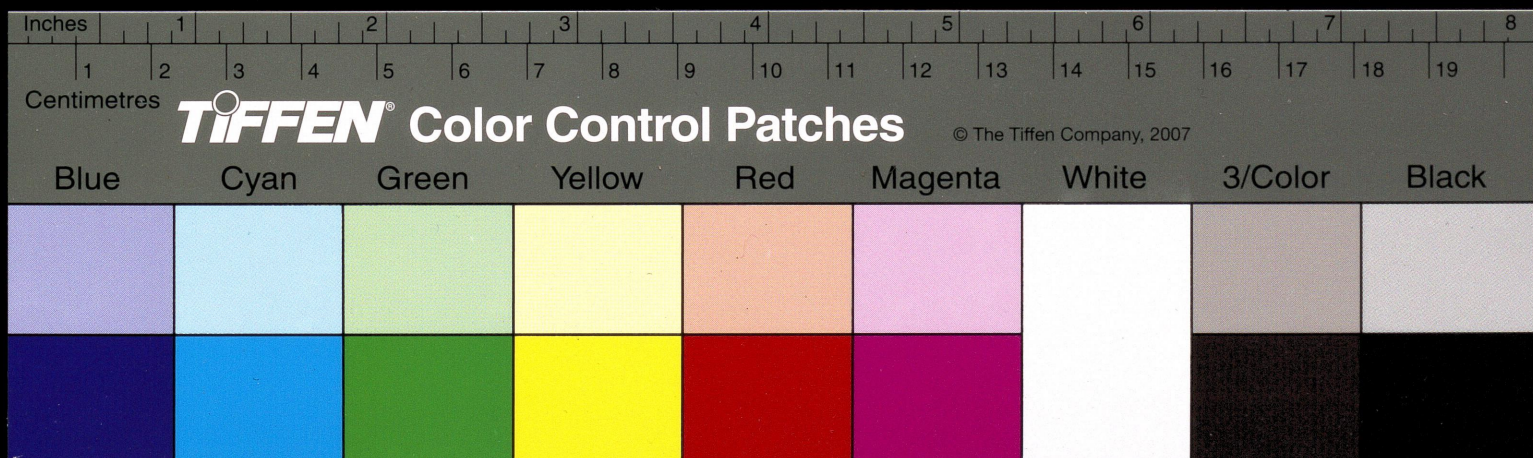
- a. It is advisable to read the MS Word document **PAPRDOC** before using the programme. However, if you wish to dive right in, go ahead! Papyrus is quite user-friendly and a breeze once you get the hang of it.
- b. The programme opens with **SEARCH** highlighted. Press **Enter** on your keyboard to select **SEARCH** and proceed. Simple guidelines are given on the **SEARCH** screen.
- c. If you are elsewhere on the Main Menu, press the **ESC** button to return to the opening screen and then search for references by typing '**S**' or clicking on **SEARCH**.
- d. Using the **LIST** key is another way of searching and outputting to printer, screen or file, if there is only one or part of one parameter to be searched. Try it. Its user friendly and leads you on.
- e. The **ESC** key gets you out of most sticky situations.
- f. You cannot add or deduct information to or from the database.

5. Keywords are based on:

- a. The name of a place (site) or area. This could well be a wetland, sanctuary, national park, city, district, state, country, *etc.*
- b. Extant (currently used) bi-nomial scientific name, Genus, Family, Order, Common or vulgar English name e.g., 'heron,' bird of prey,' 'raptor,' *etc.* However common names e.g., 'Little Egret,' 'Tawny Eagle,' *etc.*, are generally not indexed.
- c. Biological characteristics of birds e.g., breeding, feeding, display, behaviour, preening, *etc.* These words are prefixed with the word 'Biology' for convenience. Searching such keywords will require entering the following on the Search page: **K= "BIOLOGY : BREEDING"**, *etc.*
- d. Ornithological subjects resulting from the study of birds e.g., 'birdwatching,' 'checklist,' 'ring recoveries,' 'collection,' 'catalogues,' *etc.* These words are prefixed with the word 'Ornithology' for convenience. Searching such keywords will require entering the following on the Search page: **K= "ORNITHOLOGY : BIRD HITS"**, *etc.*
- e. Ornithologists. These words are prefixed with the word 'Ornithologist' for convenience. Searching such keywords will require entering the following on the Search page: **K= "ORNITHOLOGIST : ALI, SALIM"**, *etc.*

6. Shortcuts.

- a. When searching, type the first few letters of a word [e.g., **ACROC**] and press **F2** on your keyboard for a drop-down list of words beginning with the letters you typed (**ACROC**).



e. Every single *accurate* contribution will improve and enhance the database.

There is one final request I would like to make. This database is the work of nearly 20 years and is offered in its present, open format, in total faith and confidence of the user's integrity. Please do not fritter away my effort by making copies for friends. Urge them to buy one instead. Support all effort towards conservation. Thank you for your support.

¹ "PAPYRUS" and "Research Software Design" are trademarks of Research Software Design.

Research Software Design
2718 SW Kelly Street, Suite 181
Portland, OR 97201
(503) 796-1368
Fax 503-241-4260

Website: www.rsd.com
Technical Support: support@rsd.com
Other enquiries: info@rsd.com

