



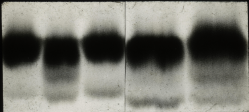
A photograph showing four dark, roughly circular spots arranged horizontally on a light, textured background. The spots are labeled from left to right as SG, BG, GP, and NG. A vertical line is visible between the GP and NG spots. The labels are printed in a bold, sans-serif font below each corresponding spot.

SG

BG

GP

NG



MOTHER

CHILD

FATHER

CHILD
2 WKS 1977

CHILD

33-4-42

C3

C8

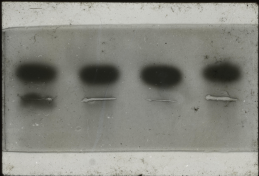
C9

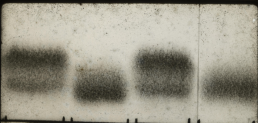


Father

Child

Mother



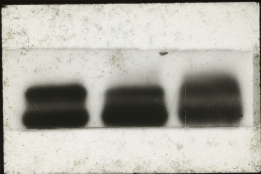


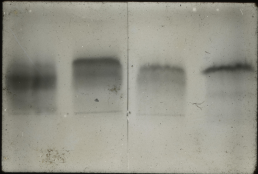
SG

BG

GP

NG



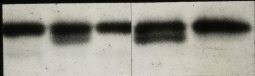




Father

Child

Mother



FATHER

CHILD

MOTHER

CHILD

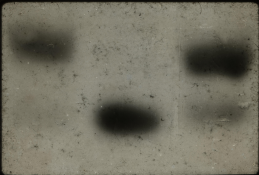


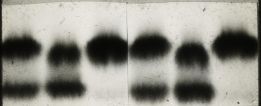
HP-42+

HP-42+

HP-42+







HRP

GRP

RTP

KRP

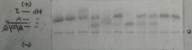
SRP

CRP

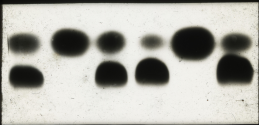
HPAD

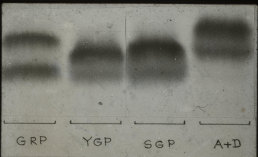
HPAD

Cellulose Acetate Electrophoresis at pH 8.6
Stained with Ponceau S







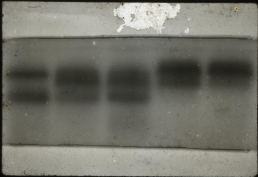


GRP

YGP

SGP

A+D

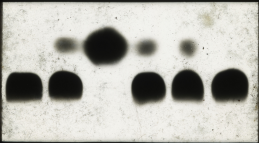


300

48-4-8
59x

280







BB

LB

BR

PH 8-9
08

PH 8-9
08

PH 8-9
08

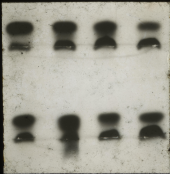
PH 8-9
08

PH 8-9
08

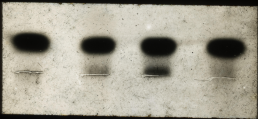
PH 8-9
08

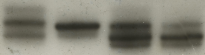


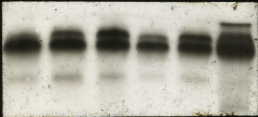












5040

5075

509

505

508

501



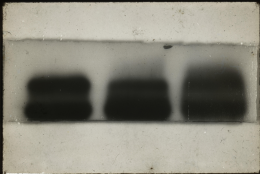


Th. Maj

HKL

KKL

A+S





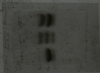
45

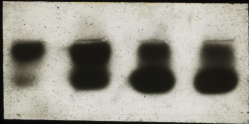
15-8-81

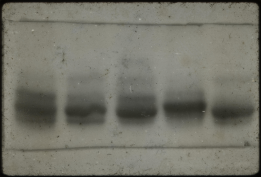
31

42

12



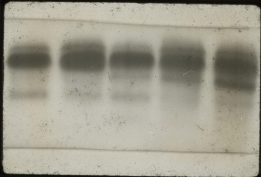






AA CJT JMT SS OJT PJT TJT AS TT AA







DA

EA

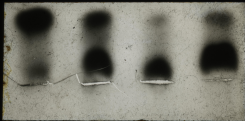
OA

SA

JA

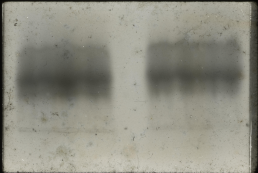
AA

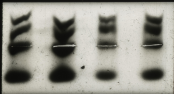
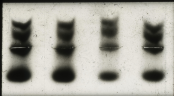
LA











Hb A₂ A Bart's



Card blood with 2% Bart's

Hb Bart's hydrops fetalis

Hb-H dis. with Hb-Constant Spring

Marshall's cord blood



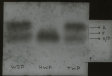
Hb A + F + Bart's dis. with Hb-Constant Spring

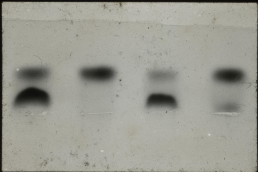
Card blood with 5% Bart's

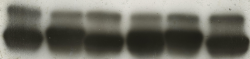
Oxygen | | | Anoxia
 Constant Spring F H

Starch-gel electrophoresis in Tris-Barbitol-EDTA buffer, pH 8.6, with dithionite









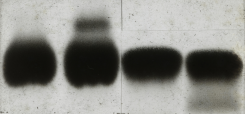


A+S

GCA

A+L

GCA

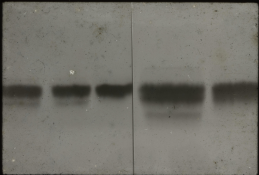


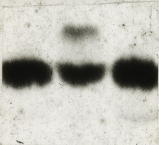
CB-91

CB-80
pH8.5

CB-91

CB-80
pH8.5

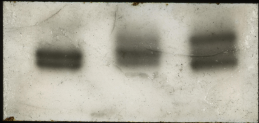




A₂ ↑ ↓

R.A.

A₂ ↑





RKL

2

HKL

3

KKL

1

KKL

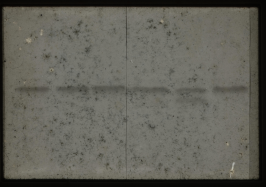
4

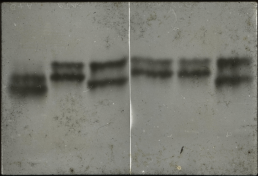
RKL

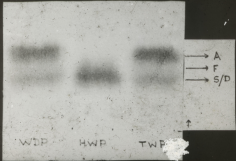
5

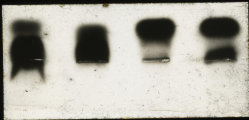
RKL

6









(-)

-F

-H/D

-S

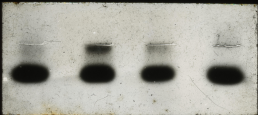
WDP

HWP

TWP

(+)

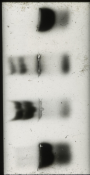
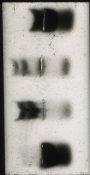


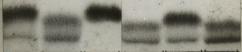


G. B. G.

J. G. G.

L. G. G.





ZAR

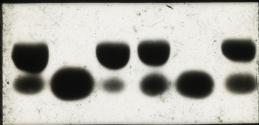
JAR

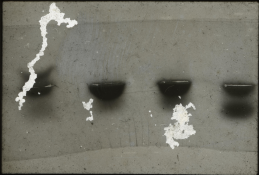
AR

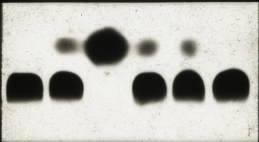
AAR

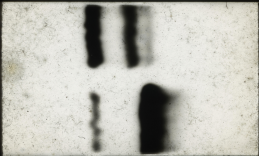
FAR

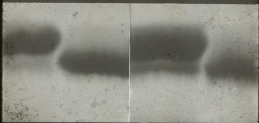
NAR

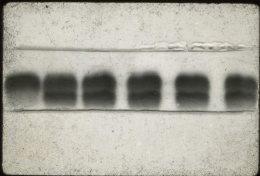






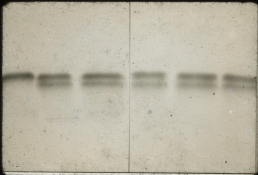






VEENA

Hb-A+S



NSA

MSA

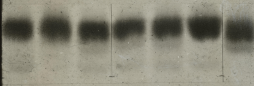
GCA

GCA

IGA

RGA

AGA





PHZ

SaPZ

NrPZ

SoPZ

A

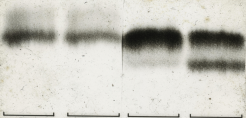




A+C

JAR

E-Th



Hb-AJ
(DRK)

Hb-AJ
(NRK)

Hb-AL
(VJS)

Hb-AD
(VVP)

