

4 copies (8)

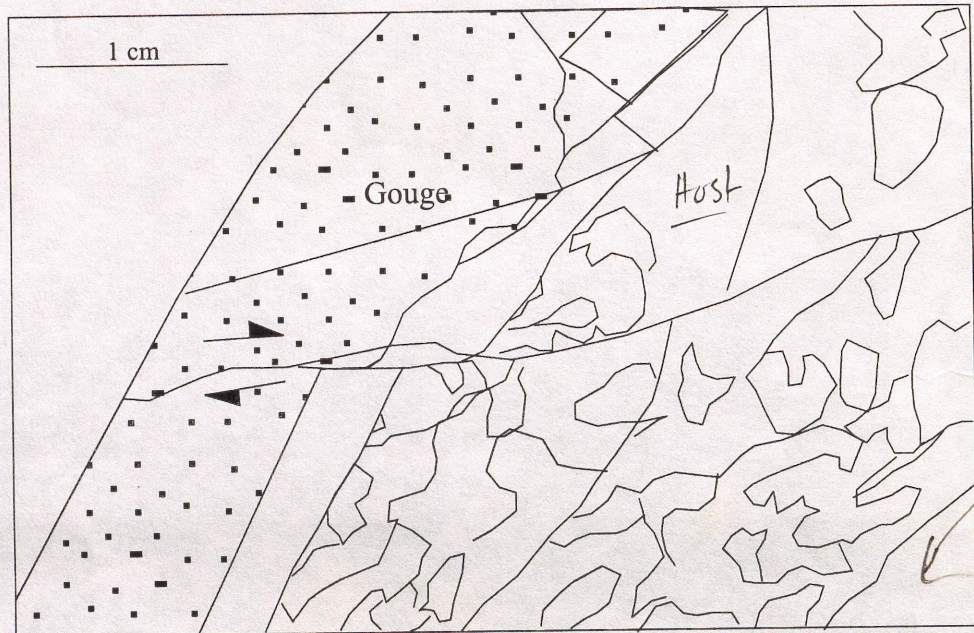
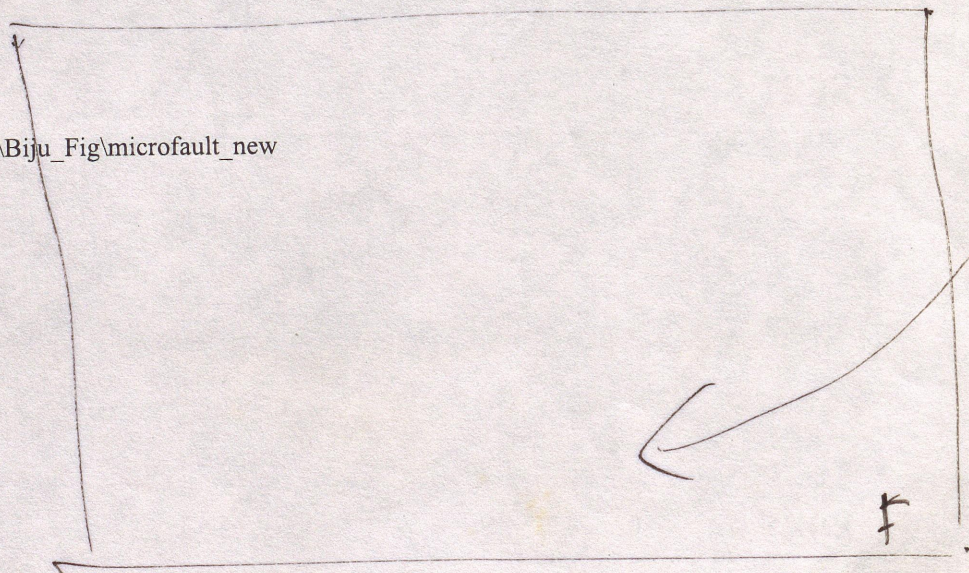


Figure 5f.

D:\mickey\Biju\Biju_Fig\microfault_new



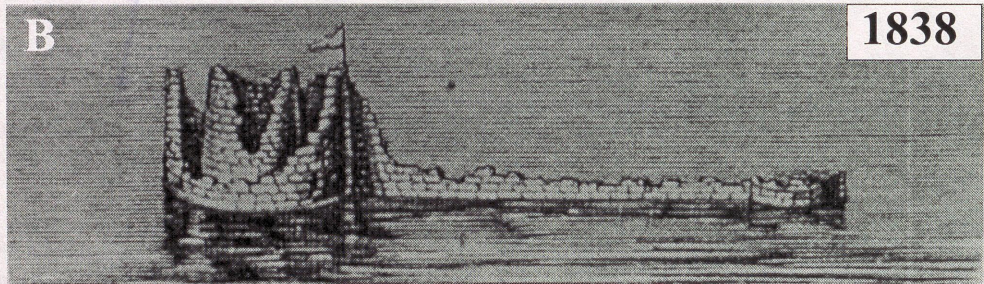
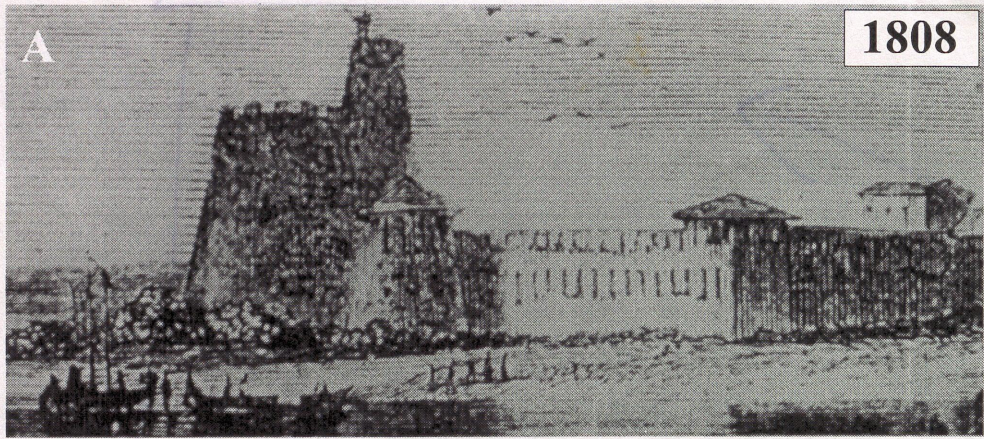
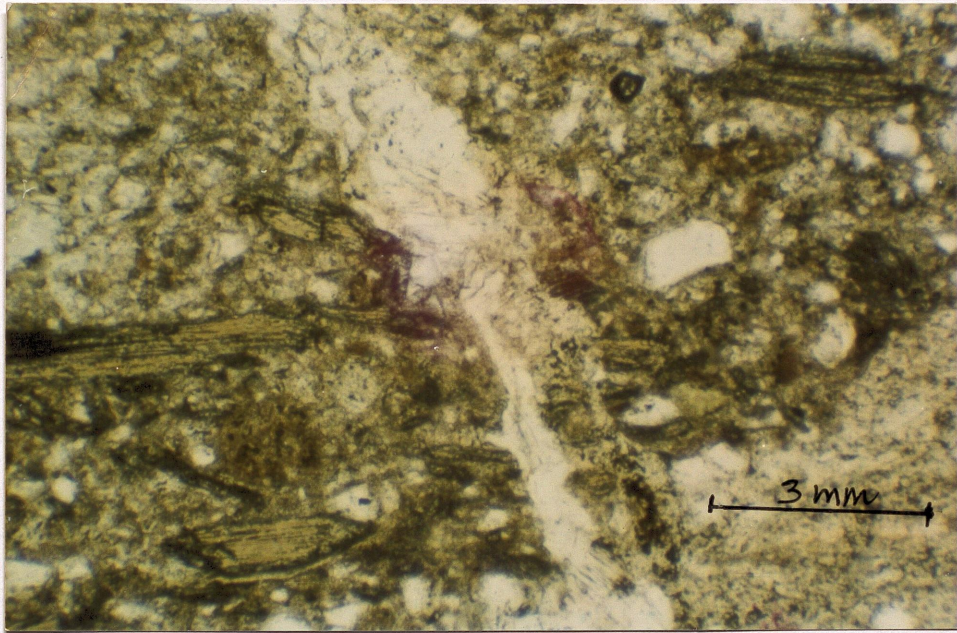
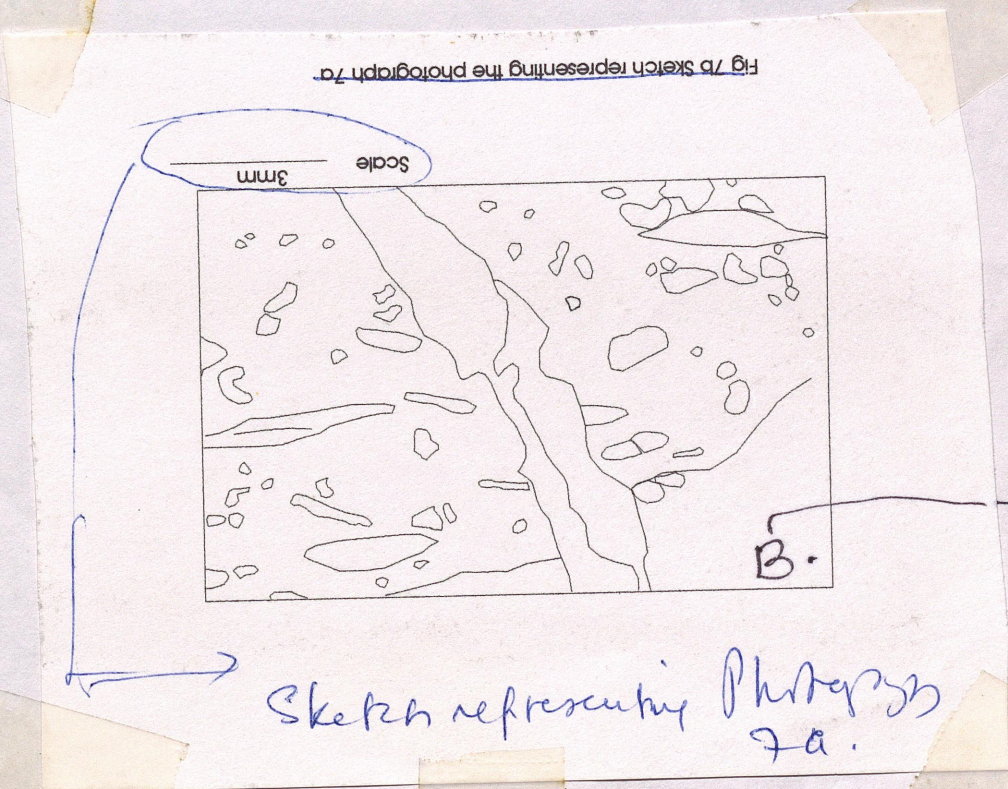


Fig. 11

4 Cupis



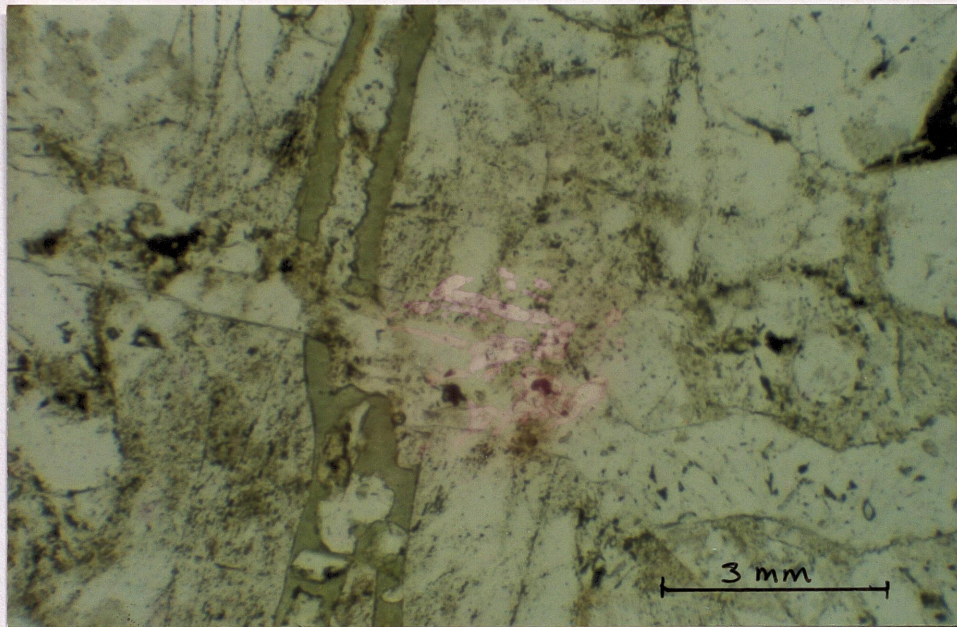
6
Fig. 7a
A



6
Fig. 7b

Sketch representing Photograph
7a.

6 copies



6
Fig. 7c

C



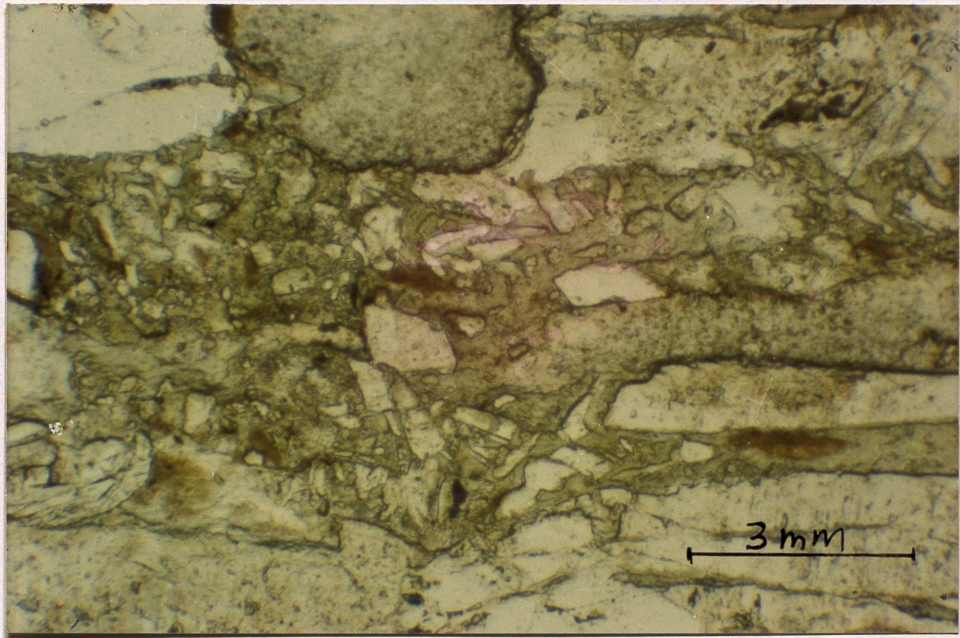
6
Fig. 7d

D

Scale 3mm

Fig 7d Sketch representing the photograph 7c

Le Coprus



7e
Fig. ~~7e~~

E

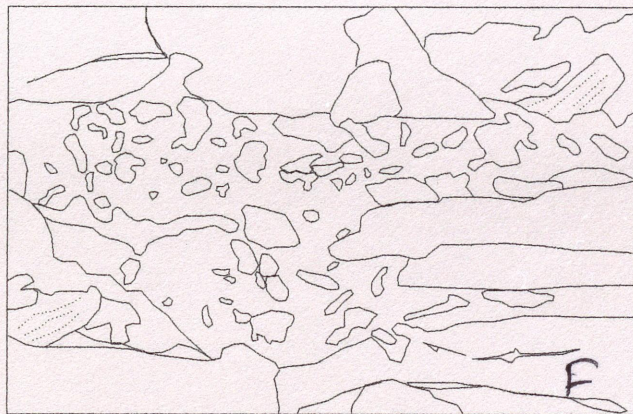


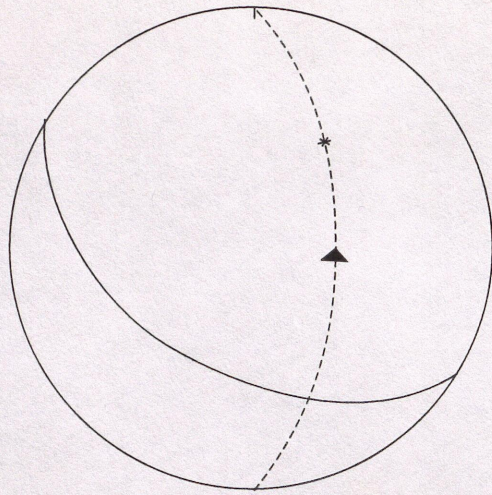
Fig. 7f

F

Scale 3mm

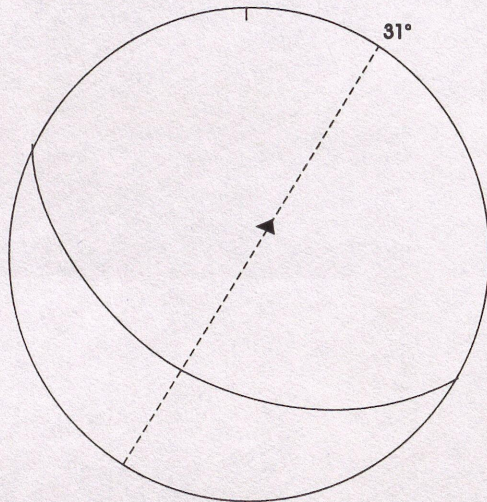
Fig 7f Sketch representing the photograph 7e

6 copies



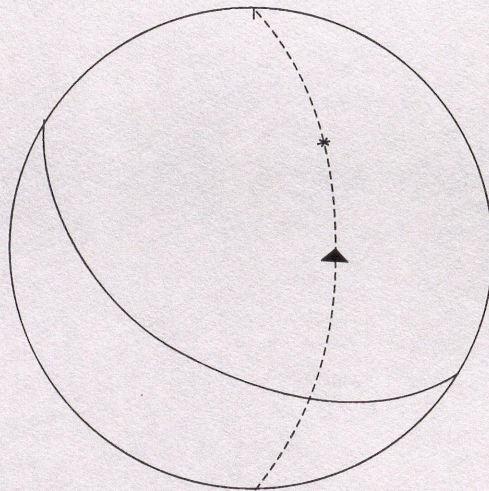
Fracture 2
Fault plane $300^{\circ} 43^{\circ}S$
Plunge of drag 50°

A



Fracture 2
Fault plane $300^{\circ}43^{\circ}S$
Plunge of striations 90°

B



Fracture 2
Fault plane $300^{\circ} 43^{\circ}S$
Plunge of striations 50°

C

(8)

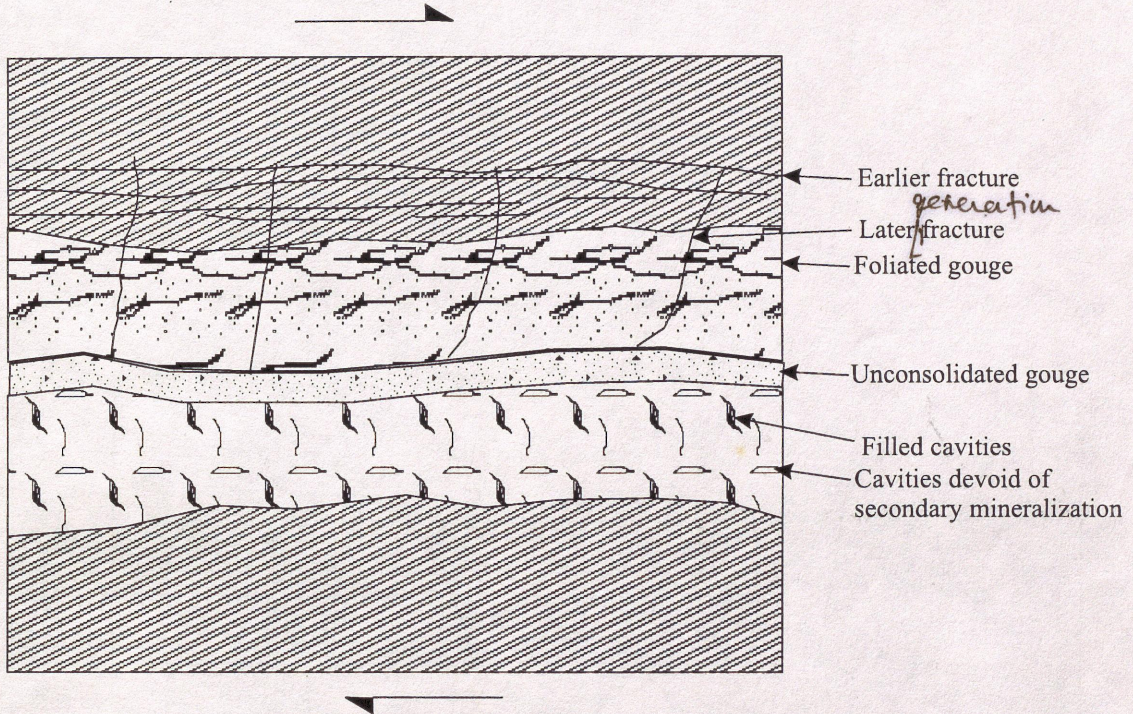
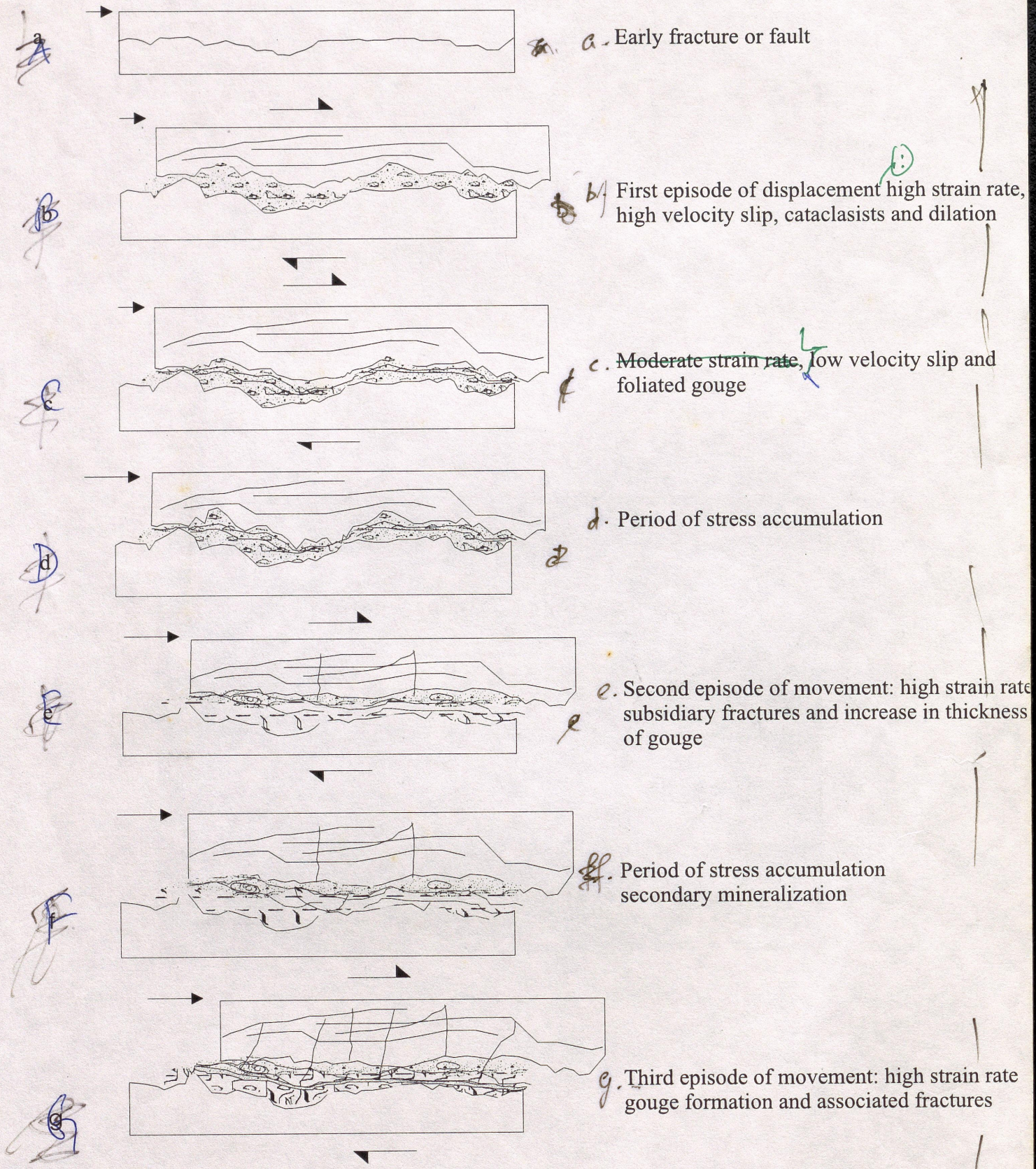


Fig 8.

⊗ 4 Copies



D:\mickey\Biju\Biju_Fig\model-fracta_new

Fig 9

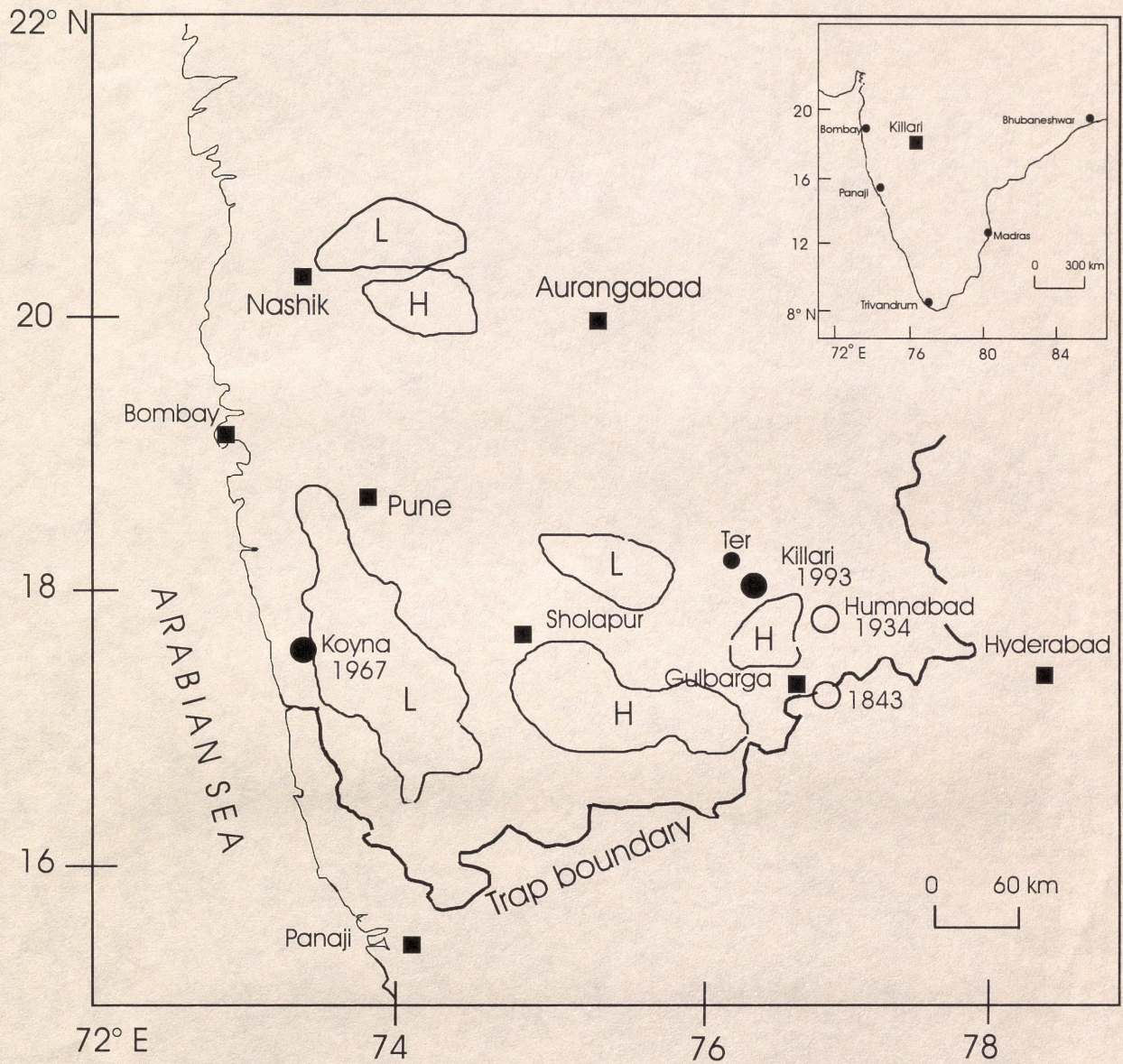


Fig -1
Rajendran & Rajendran

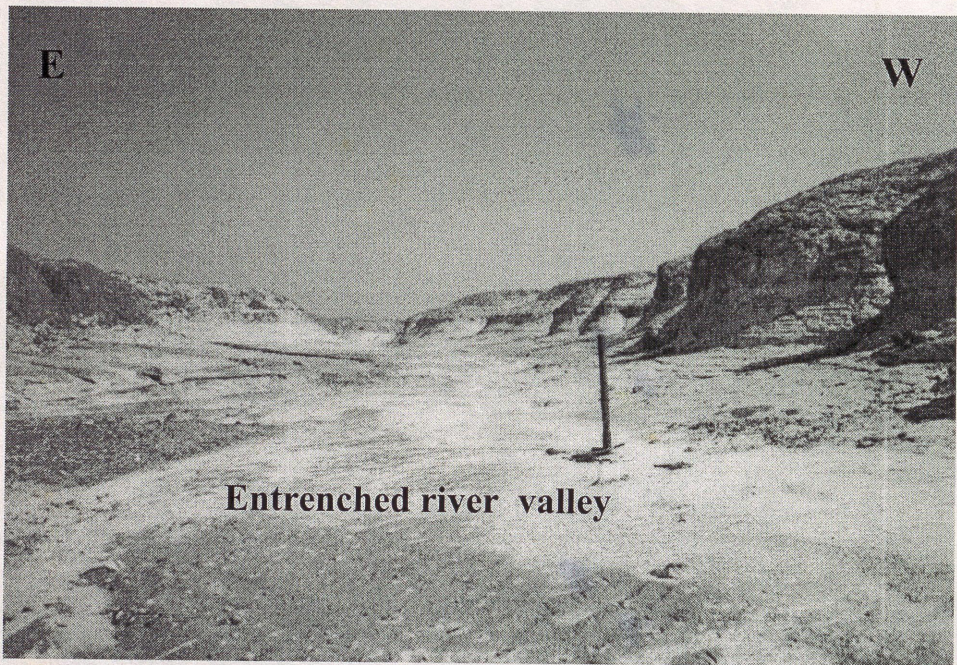


Fig. 6

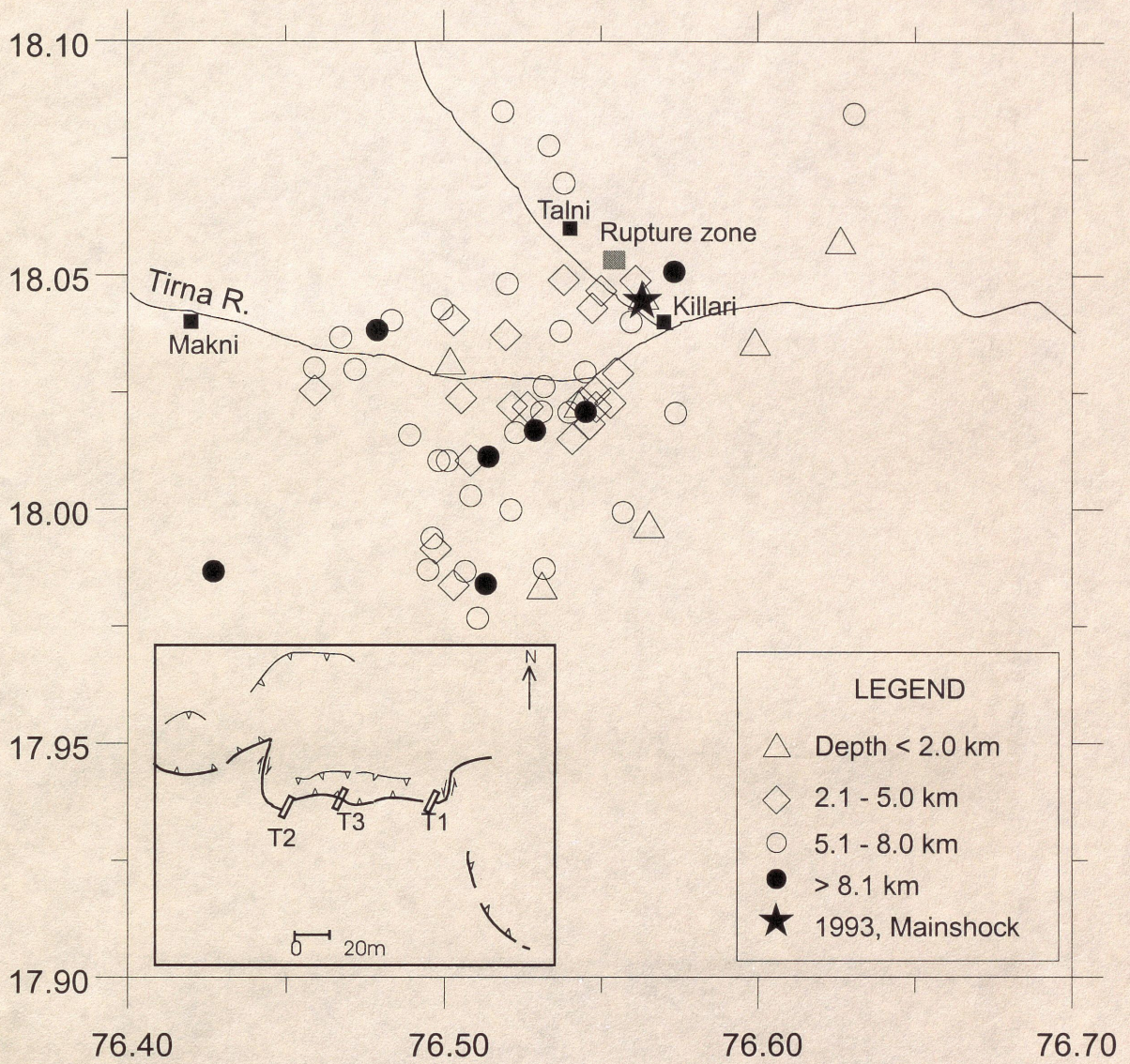


Fig. 2
Rajendran & Rajendran



not good

Figure 2a
Reijndraan



Figure 2b
Rajendran



overlay this with
a trace.
use me with a person(?)

Fig. 33
Rajendran & Rajendran



Fig. 4a



Fig. 4b



Fig. 4c

Rajendran
Rajendran

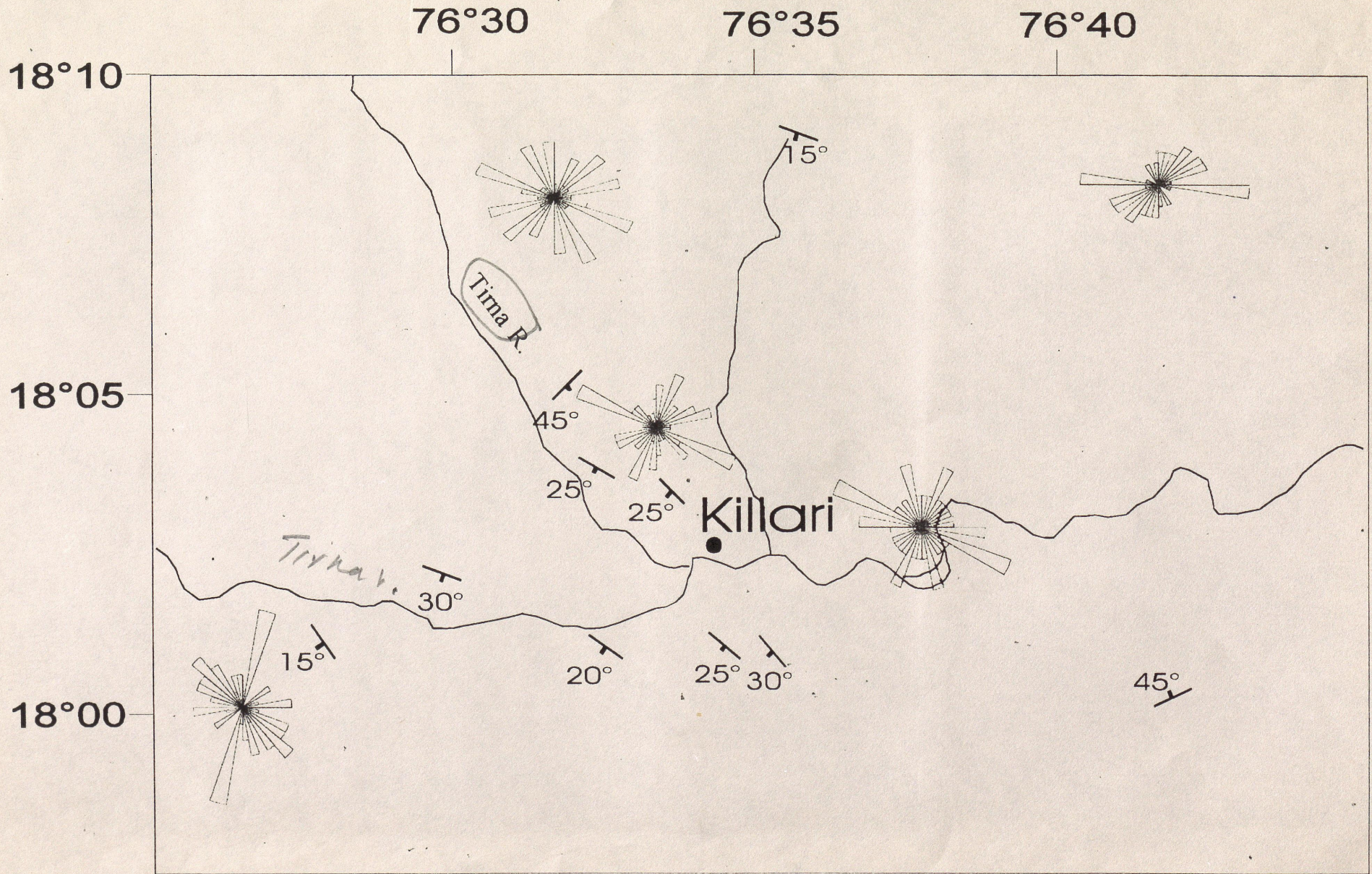


Fig 5

Figure 5. Rajendran and Rajendran.

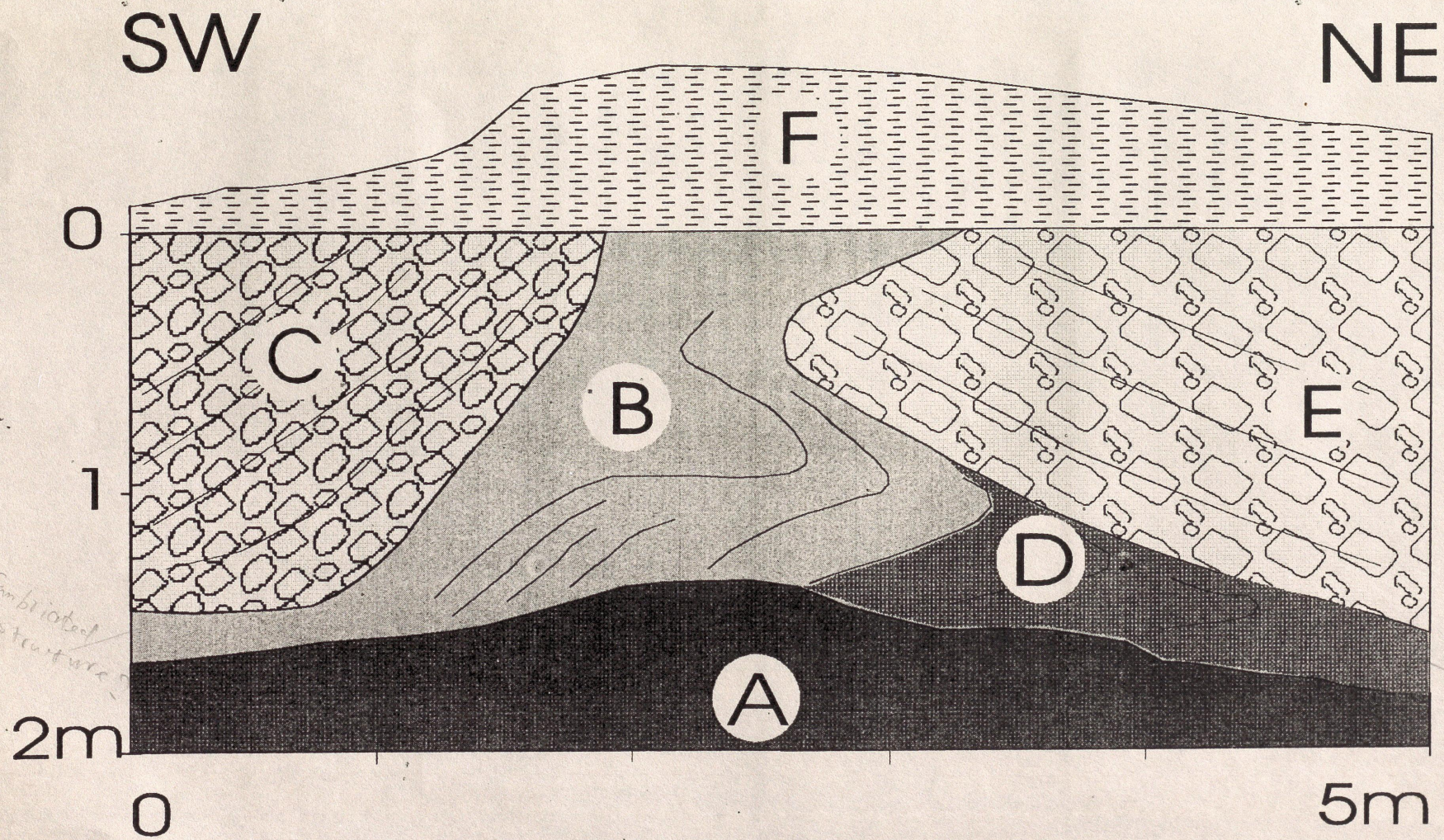


Fig. 6
Rajendran & Rajendran



Fig. 7
Rajendran & Rajendran



two event
of the basaltic
events ?

Figure 8
Rajendran & Rajendran

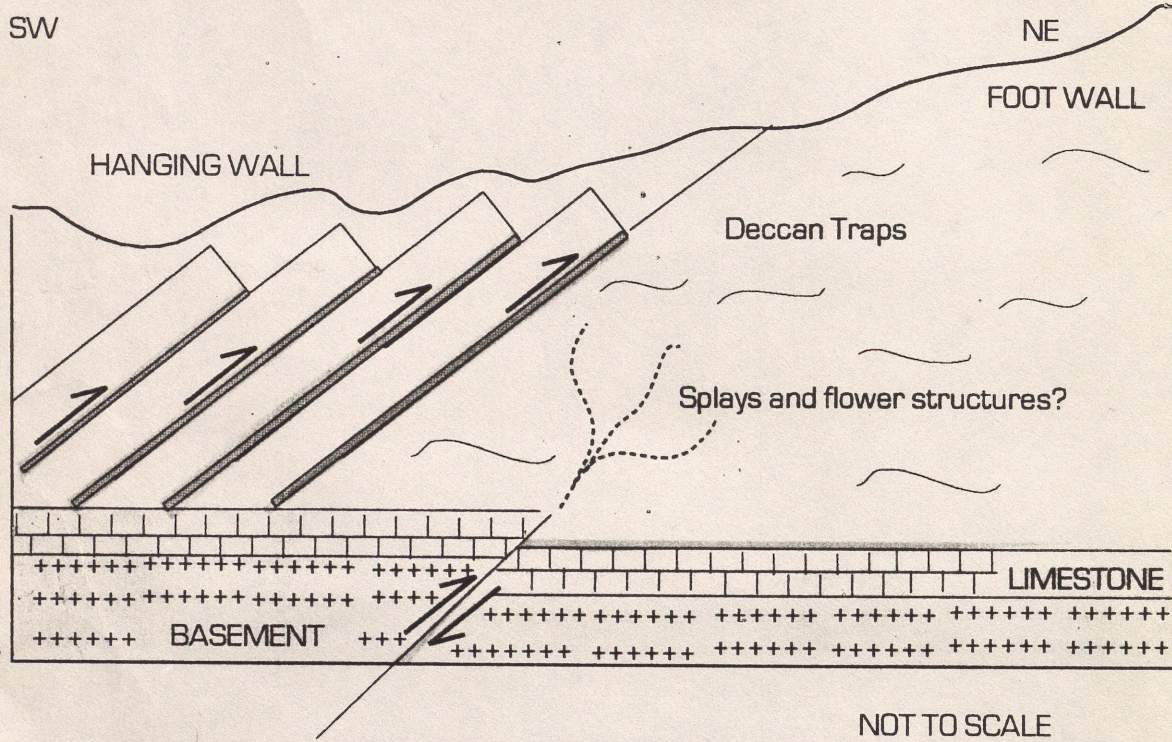


Fig. 9
 Rajendran &
 Rajendran

RP

RA



Fig 11 a



Fig 11 b.

Rajendran & Rajendran

Fig 11