





1988

MARCH

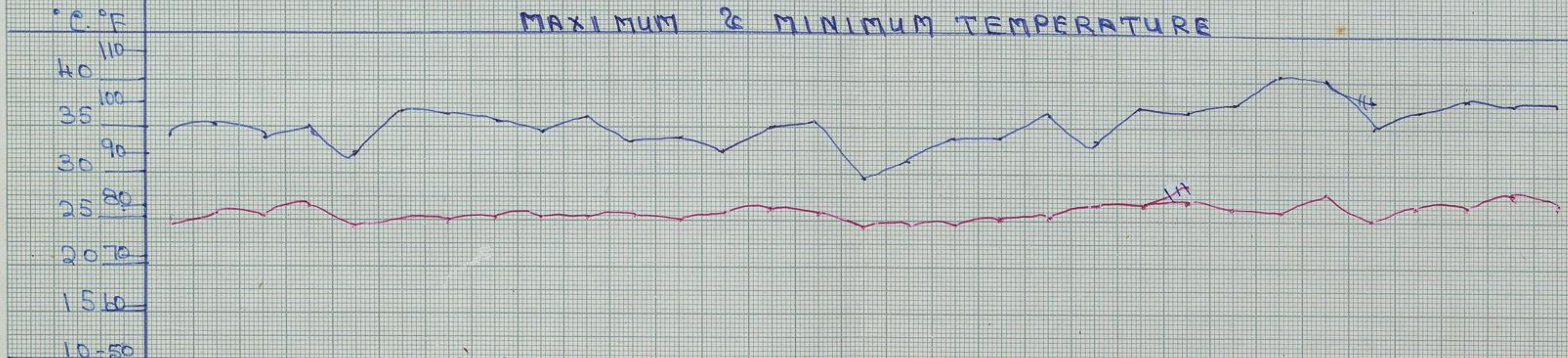
WEATHER REPORT

DOHNAVUR

7 A.M  
REPORT

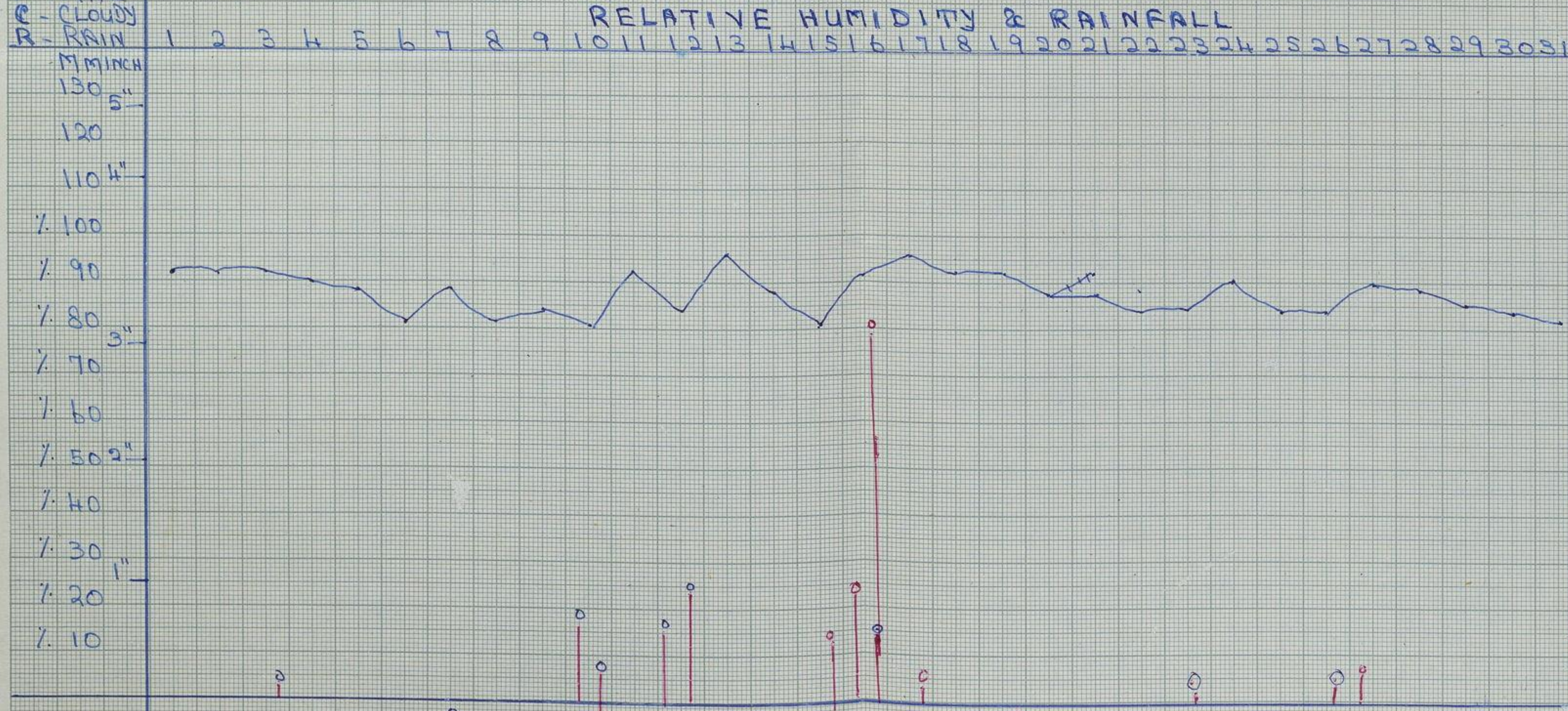
	1	2	3	4	5	6	7	8	9	10	11	12	13	14	15	16	17	18	19	20	21	22	23	24	25	26	27	28	29	30	31	
LIGHTNING	L	L	L	L	L	L	L	L	L	L	L	L	L	L	L	L	L	L	L	L	L	L	L	L	L	L	L	L	L	L	L	L
THUNDER			*	*	*	*					*	*	*	*	*																	
RAIN FALL DOHNAVUR			09"							025"	001"	08"			052"	289"	013"						006"				08"					
RAIN FALL NARAIKADU										075"	016"	090"			020"	210"	200"										025"					

MAXIMUM & MINIMUM TEMPERATURE



REMARKS	F	P	R	F	F	F	F	F	F	R	R	R	F	P	R	R	R	P	P	P	P	R	F	F	R	F	F	F	F	F
---------	---	---	---	---	---	---	---	---	---	---	---	---	---	---	---	---	---	---	---	---	---	---	---	---	---	---	---	---	---	---

RELATIVE HUMIDITY & RAINFALL



DOHNAVUR RAIN FALL      NARAIKADU RAIN FALL

1988

APRIL

# WEATHER REPORT

DOHNAVUR

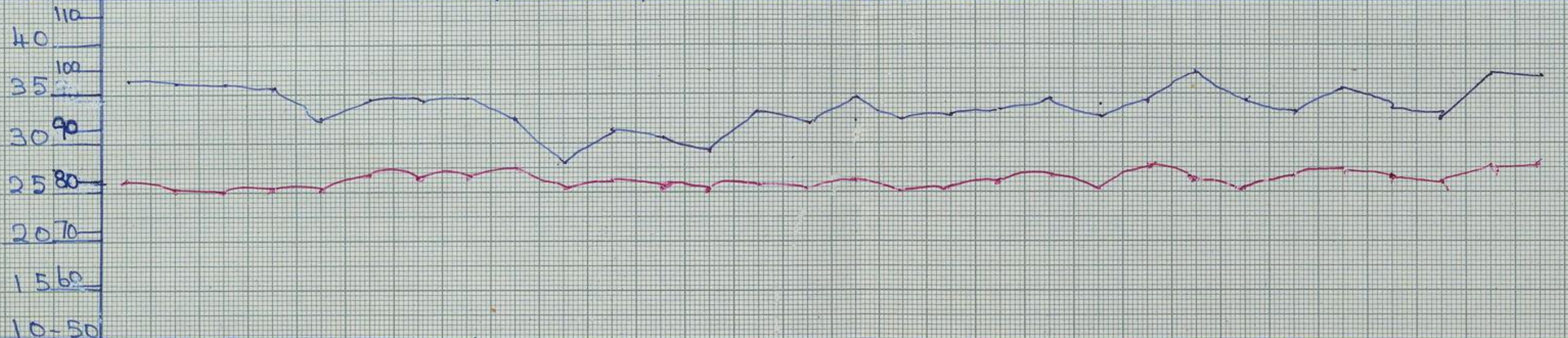
7.A.M  
REPORT

	1	2	3	4	5	6	7	8	9	10	11	12	13	14	15	16	17	18	19	20	21	22	23	24	25	26	27	28	29	30	
LIGHTNING					L	L	L	L	L	L	L	L	L	L	L	L	L	L	L	L	L	L	L	L	L	L	L	L	L	L	L
THUNDER							*	*	*	*	*	*	*	*	*	*	*	*	*	*	*	*	*	*	*	*	*	*	*	*	*
RAINFALL DOHNAVUR								0.22"		0.28"	0.20"		0.64"																		
RAINFALL NARAIKKADU								0.45"		0.75"	0.25"																				

## MAXIMUM & MINIMUM TEMPERATURE

°C °F

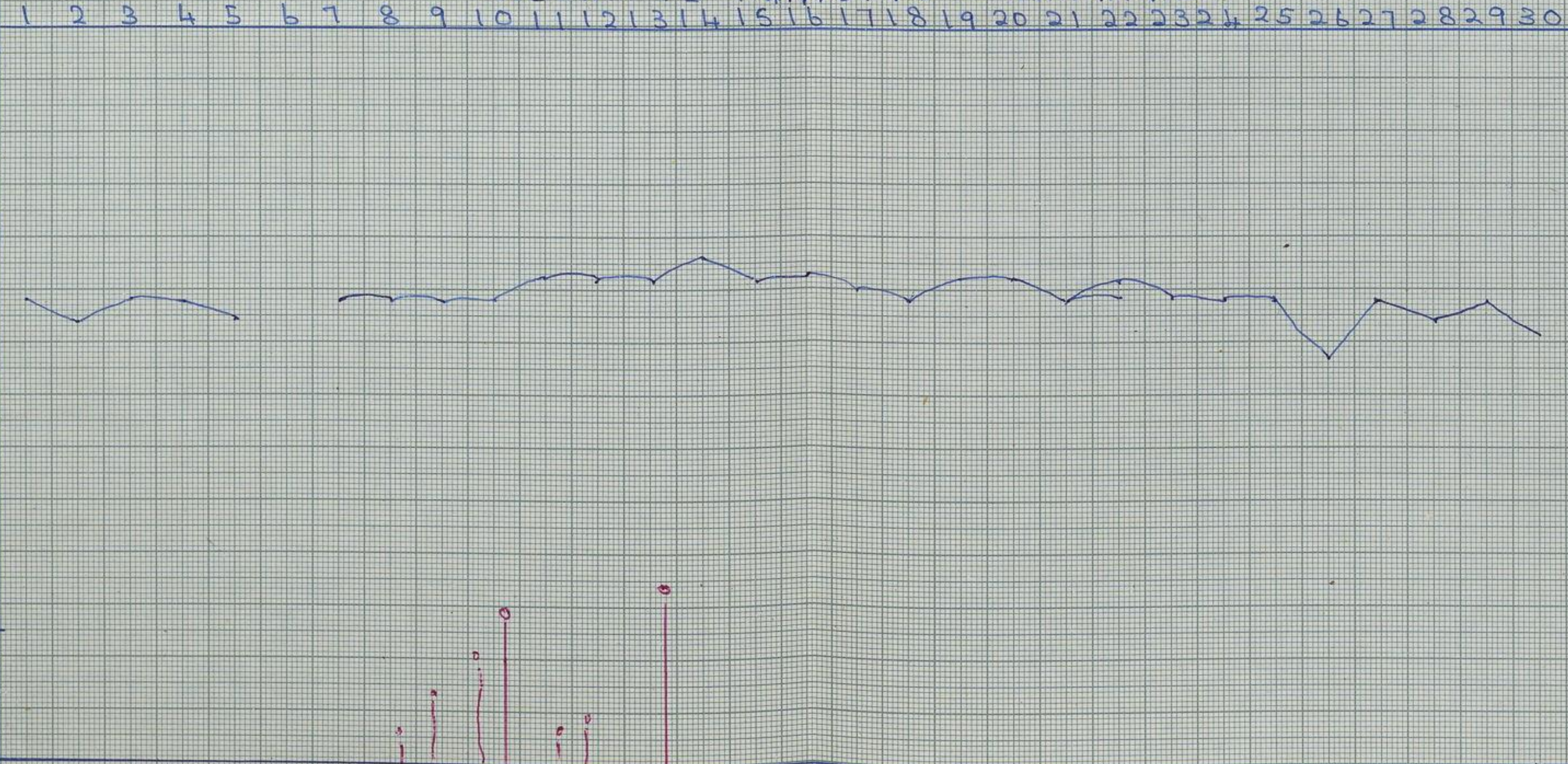
110  
40  
35 100  
30 90  
25 80  
20 70  
15 60  
10-50



REMARKS	1	2	3	4	5	6	7	8	9	10	11	12	13	14	15	16	17	18	19	20	21	22	23	24	25	26	27	28	29	30
	F	F	F	F	F	F	R	R	R	R	R	R	R	F	F	F	F	F	F	F	F	F	F	F	F	F	F	F	F	F

## RELATIVE HUMIDITY & RAINFALL

MM INCH  
130 5"  
120  
110  
% 100 4"  
% 90  
% 80 3"  
% 70  
% 60  
% 50 2"  
% 40  
% 30 1"  
% 20  
% 10



DOHNAVUR RAINFALL

NARAIKKADU RAINFALL

1988

MAY

WEATHER REPORT

DOHNAVUR

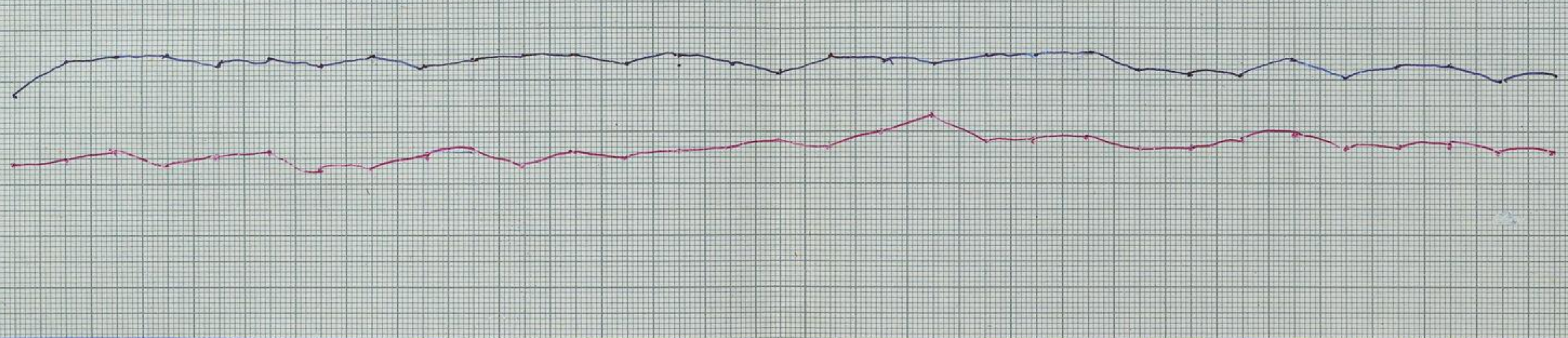
7 AM REPORT

	1	2	3	4	5	6	7	8	9	10	11	12	13	14	15	16	17	18	19	20	21	22	23	24	25	26	27	28	29	30	31	
LIGHTNING	L	L		L	L		L	L	L	L	L	L				L		L	L	L	L	L	L	L	L							
THUNDER		*		*	*											*																
RAINFALL																																
DOHNAVUR																																
RAINFALL																																
NARAIKADU																																

°C. °F

MAXIMUM & MINIMUM TEMPERATURE

40 110  
 35 100  
 30 90  
 25 80  
 20 70  
 15 60  
 10 50



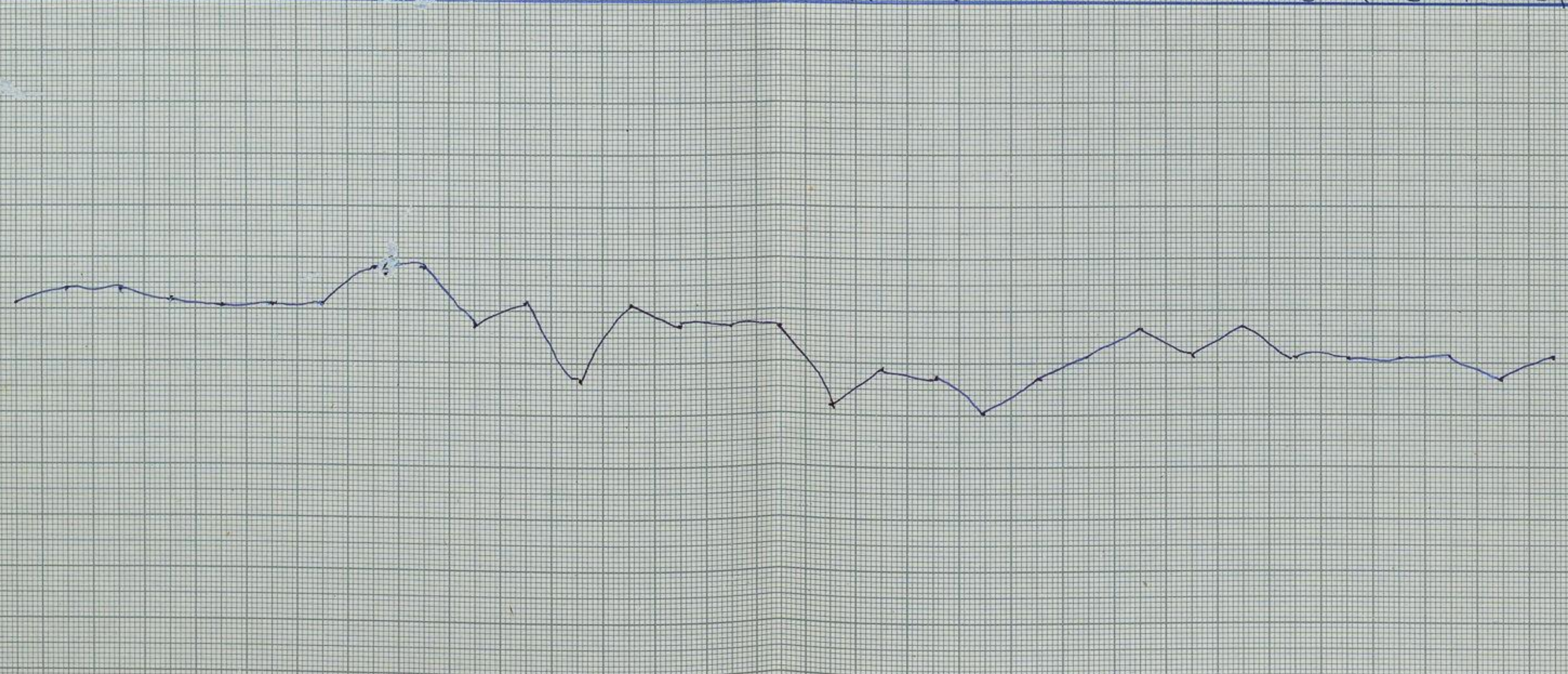
REMARKS	F	F	F	F	F	F	F	F	F	F	C	R	F	F	F	F	F	F	F	F	F	F	F	F	F	F	F	F	F	F
---------	---	---	---	---	---	---	---	---	---	---	---	---	---	---	---	---	---	---	---	---	---	---	---	---	---	---	---	---	---	---

F - FINE  
 C - CLOUDY  
 R - RAIN

RELATIVE HUMIDITY & RAINFALL

	1	2	3	4	5	6	7	8	9	10	11	12	13	14	15	16	17	18	19	20	21	22	23	24	25	26	27	28	29	30	31
--	---	---	---	---	---	---	---	---	---	----	----	----	----	----	----	----	----	----	----	----	----	----	----	----	----	----	----	----	----	----	----

MM INCH  
 1.5  
 1.2  
 1.0  
 .9  
 .8  
 .7  
 .6  
 .5  
 .4  
 .3  
 .2  
 .1



DOHNAVUR RAINFALL

NARAIKADU RAINFALL

1988 JUNE

# WEATHER REPORT

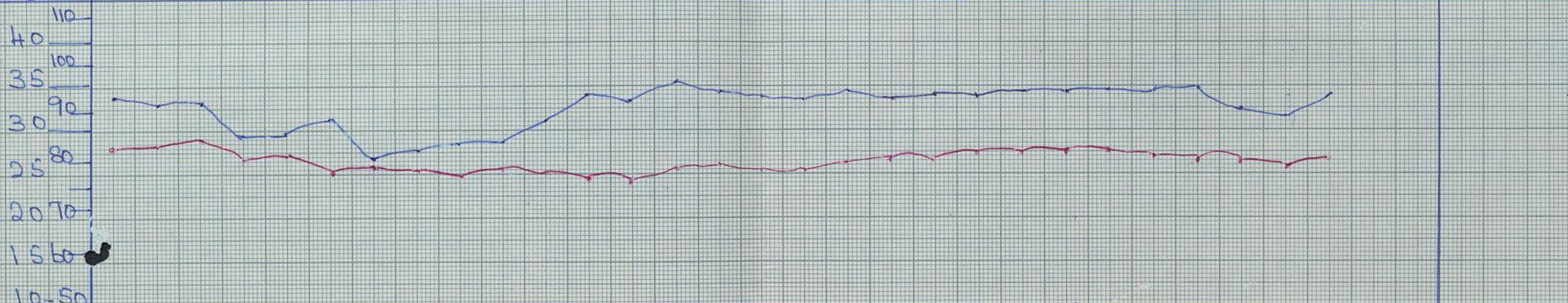
DOHNAVUR

7 A.M. REPORT

	1	2	3	4	5	6	7	8	9	10	11	12	13	14	15	16	17	18	19	20	21	22	23	24	25	26	27	28	29	30	
LIGHTNING	L					L				L																	L				
THUNDER	*					*																									
RAINFALL DOHNAVUR				06"	010"	026"	055"	130"	038"	033"																027"					
RAINFALL NARAIKKADU				270"	075"	220"	613"																								

°C. °F.  
110  
100  
90  
80  
70  
60  
50

## MAXIMUM & MINIMUM TEMPERATURE



REMARKS	F	F	F	C	R	R	R	R	R	R	F	F	F	F	F	F	F	F	F	F	F	F	F	F	F	P	R	R	F	F	
F - FINE																															
C - CLOUDY																															
R - RAIN																															

## RELATIVE HUMIDITY & RAINFALL



DOHNAVUR RAINFALL      NARAIKKADU RAINFALL

1988

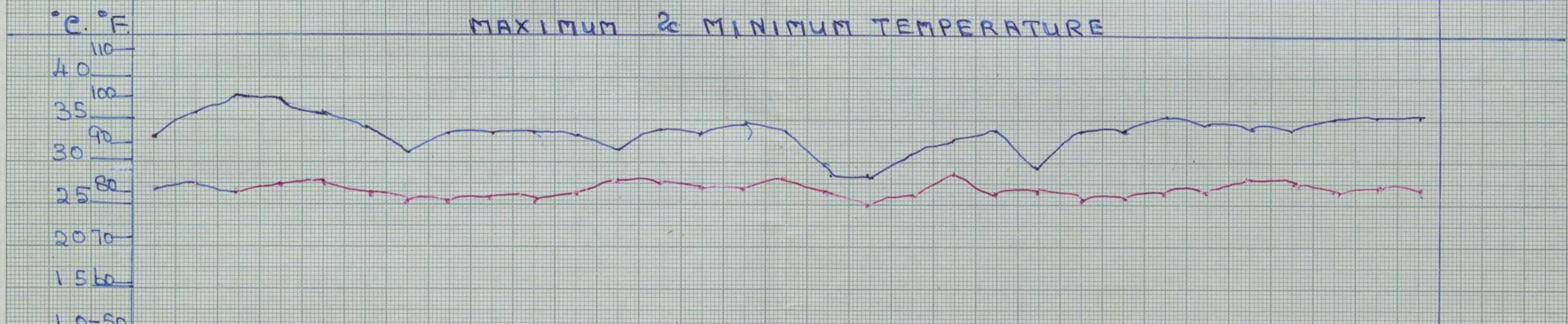
JULY

# WEATHER REPORT

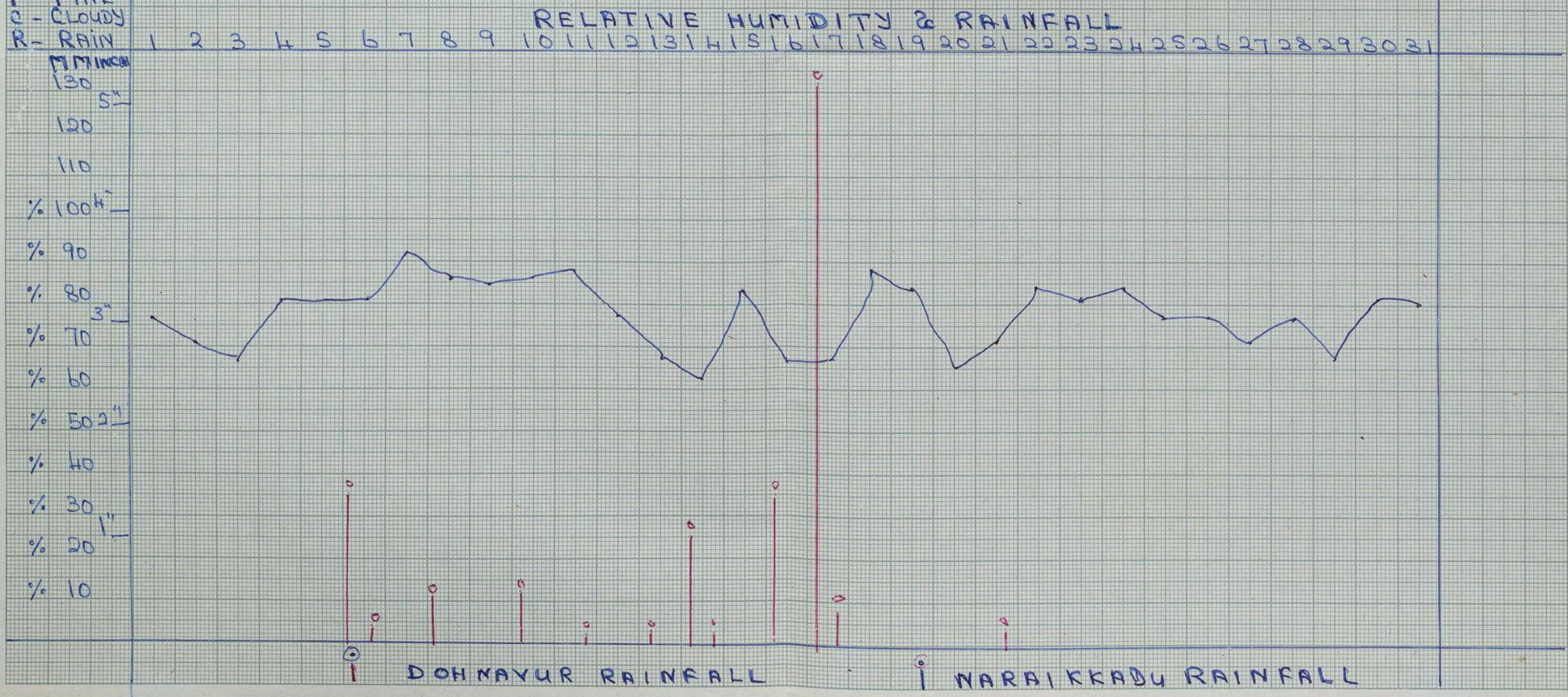
DOHNAVUR

7 A.M.  
REPORT

	1	2	3	4	5	6	7	8	9	10	11	12	13	14	15	16	17	18	19	20	21	22	23	24	25	26	27	28	29	30	31	
LIGHTNING				L	L	L	L	L	L	L	L			L				L														
THUNDER				*	*	*	*	*	*	*	*			*				*														
RAINFALL																																
DOHNAVUR						0.12				0.10					0.06			0.38	0.03			0.12										
RAINFALL																																
NARAIKADU				1.65			0.50		0.57			0.10	1.00		1.75	5.30																



REMARKS F F F F F R F F F F F F F F F F R R F F R F F F F F F F F F F F



DOHNAVUR RAINFALL

NARAIKADU RAINFALL

1988

AUGUST

# WEATHER REPORT

DOHNAVUR

T.A.M.  
REPORT

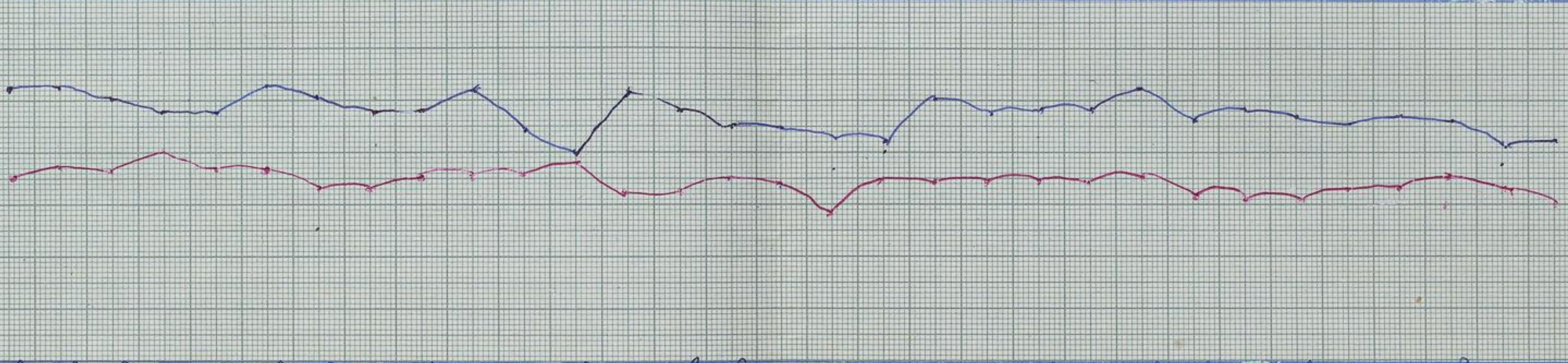
	1	2	3	4	5	6	7	8	9	10	11	12	13	14	15	16	17	18	19	20	21	22	23	24	25	26	27	28	29	30	31	
LIGHTNING						L	L	L																								
THUNDER						*	*	*																								
RAINFALL																																
DOHNAVUR																																
RAINFALL						0.52																				0.02						
NARAIKADU																																
RAINFALL																																

°C.°F.

## MAXIMUM & MINIMUM TEMPERATURE

110  
100  
90  
80  
70  
60  
50

35  
30  
25  
20  
15  
10



REMARKS

F F F F F F R F F F F F F F F F F F F F F F F F F F

F - FINE  
C - CLOUDY  
R - RAIN

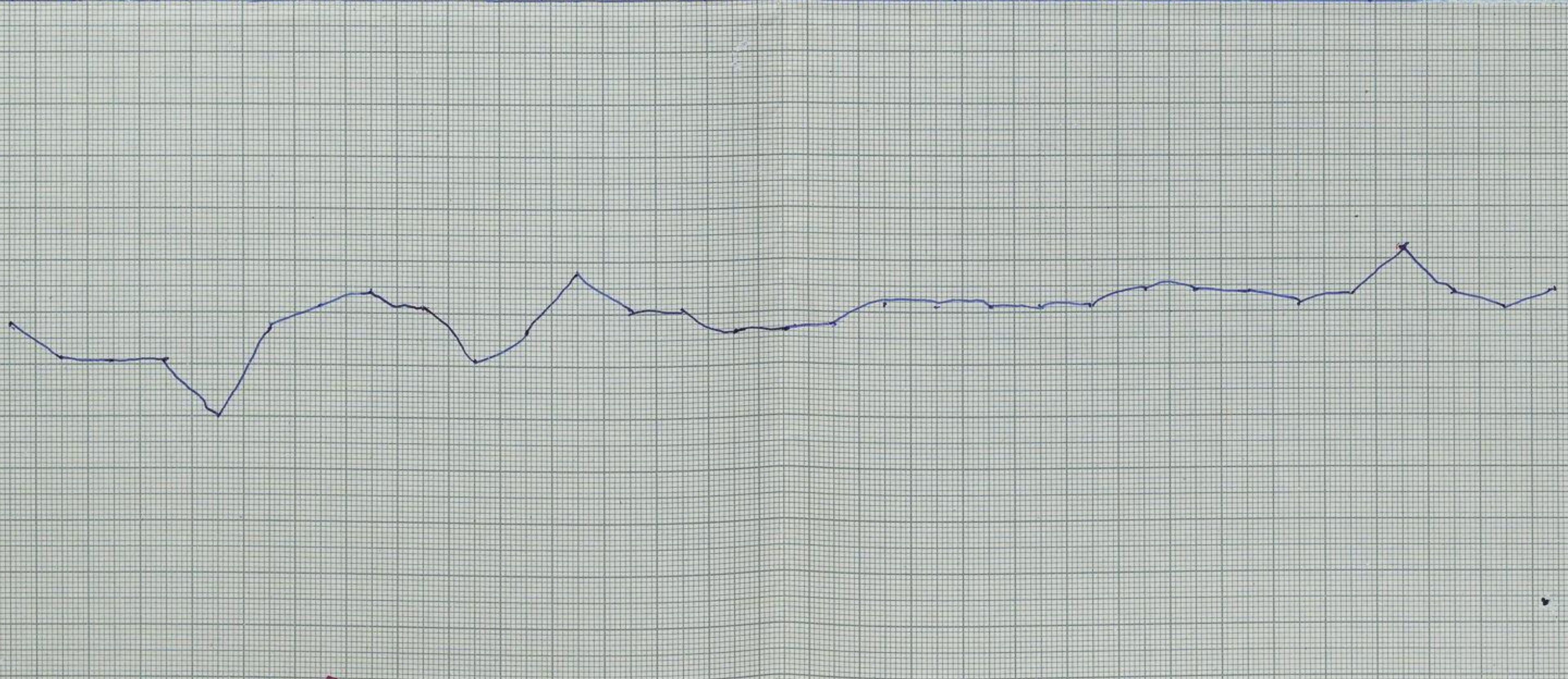
## RELATIVE HUMIDITY & RAINFALL

MM INCH

130  
120  
110  
100  
90  
80  
70  
60  
50  
40  
30  
20  
10

3"  
2"  
1"

% 100  
% 90  
% 80  
% 70  
% 60  
% 50  
% 40  
% 30  
% 20  
% 10

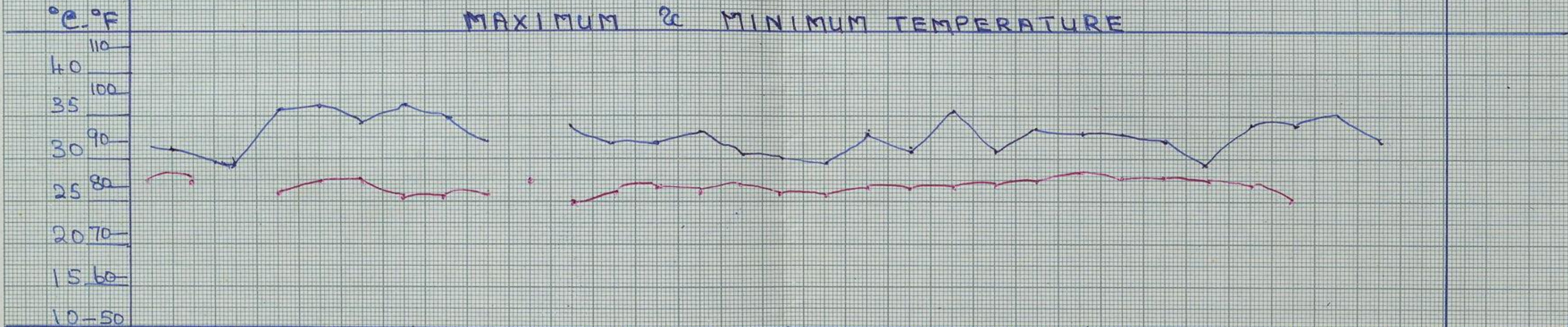


DOHNAVUR RAINFALL

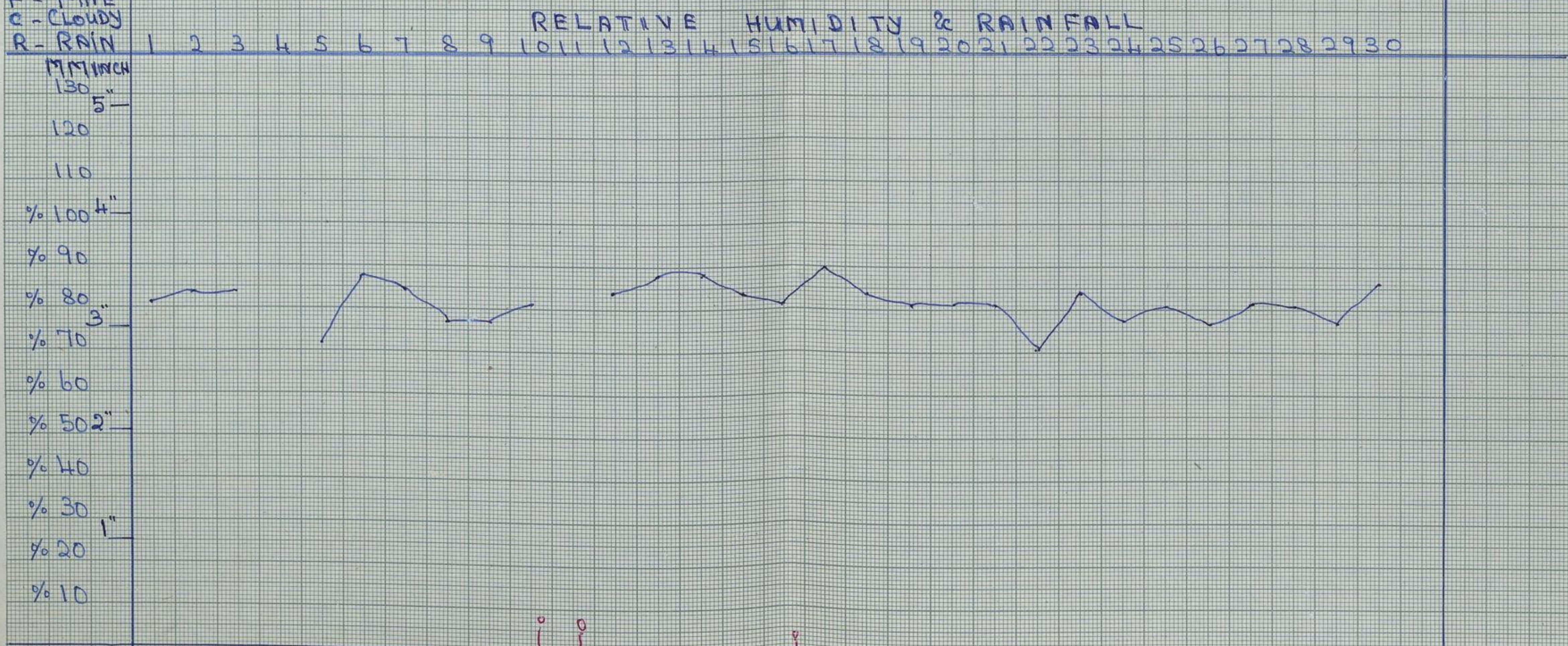
NARAIKADU RAINFALL

1988 SEPTEMBER WEATHER REPORT DOHNAVUR 7.A.M REPORT

	1	2	3	4	5	6	7	8	9	10	11	12	13	14	15	16	17	18	19	20	21	22	23	24	25	26	27	28	29	30				
LIGHTNING			L	L	L	L	L	L	L	L	L	L	L	L	L	L	L	L	L	L	L	L	L	L	L	L	L	L	L	L	L			
THUNDER			*	*	*	*	*	*	*	*	*	*	*	*	*	*	*	*	*	*	*	*	*	*	*	*	*	*	*	*	*	*		
RAINFALL																																		
DOHNAVUR			0.41"							0.25"	0.26"					0.05"						0.02"												
RAINFALL																																		
NARAIKKADU																																		



REMARKS F R C P F P F P F P R F F F F R P P R F P F F F F F F F F F



DOHNAVUR RAINFALL NARAIKKADU RAINFALL

1988

OCTOBER

WEATHER

REPORT

DOHNAVUR

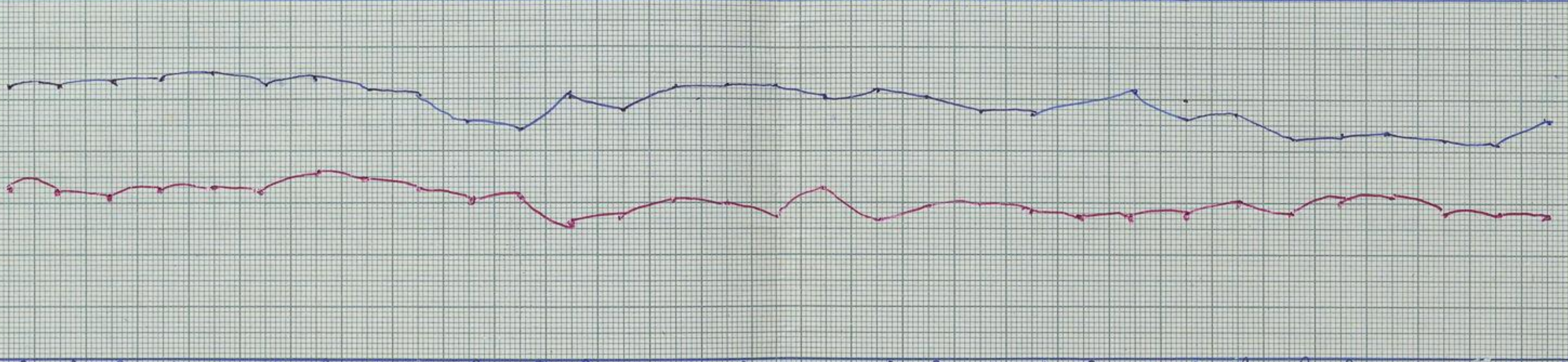
7.A.M.  
REPORT.

	1	2	3	4	5	6	7	8	9	10	11	12	13	14	15	16	17	18	19	20	21	22	23	24	25	26	27	28	29	30	31	
LIGHTNING																																
THUNDER							*			*								*	*								*					
RAINFALL																																
DOHNAVUR										0.01"	0.06"							0.14"						0.22"			0.37"					
RAINFALL																																
NARRIKKADU																																

°C.°F

MAXIMUM & MINIMUM TEMPERATURE

110  
100  
90  
80  
70  
60  
50



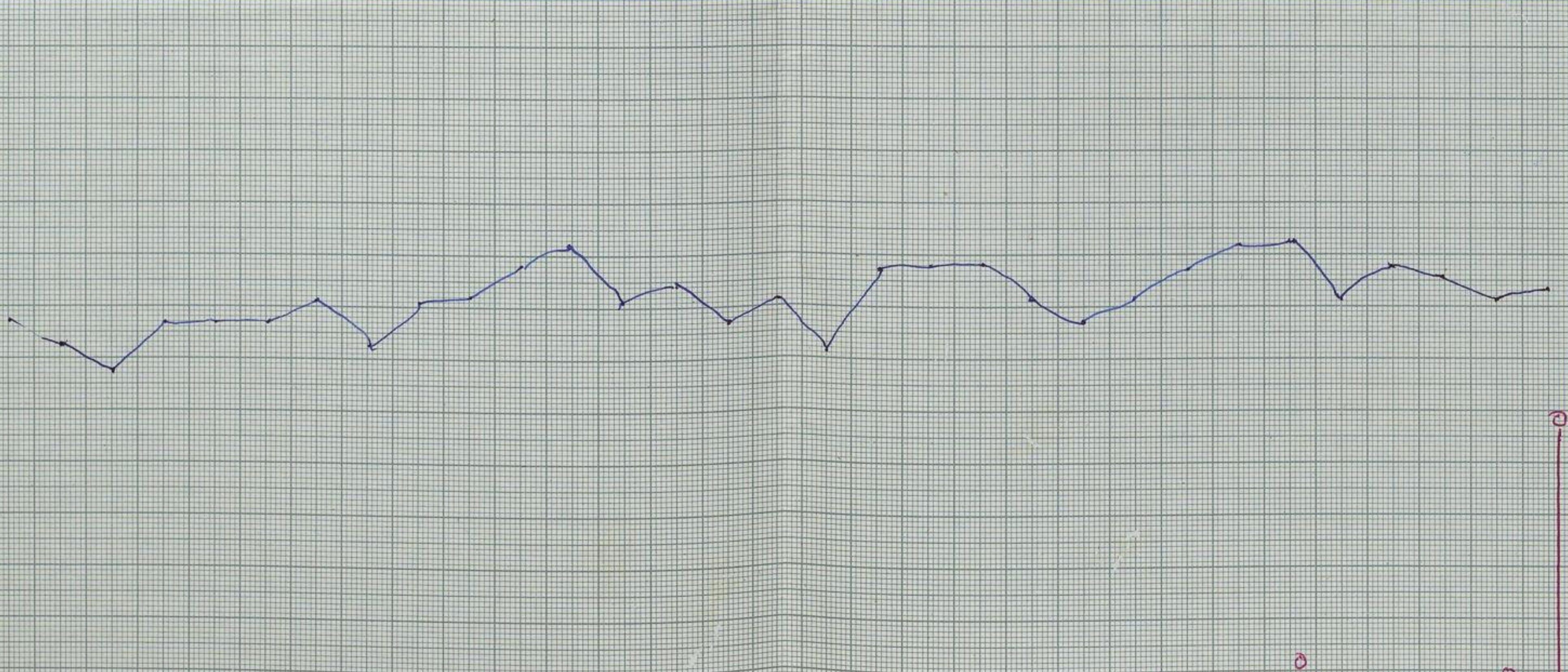
REMARKS

F F F F F F F F F F R R P F F F F R F F F F R R R R R R A P R R

F - FINE  
C - CLOUDY  
R - RAIN

RELATIVE HUMIDITY & RAINFALL

MM INCH  
30  
5"  
120  
110  
100  
90  
80  
70  
60  
50  
40  
30  
20  
10



DOHNAVUR RAINFALL

NARRIKKADU RAINFALL



