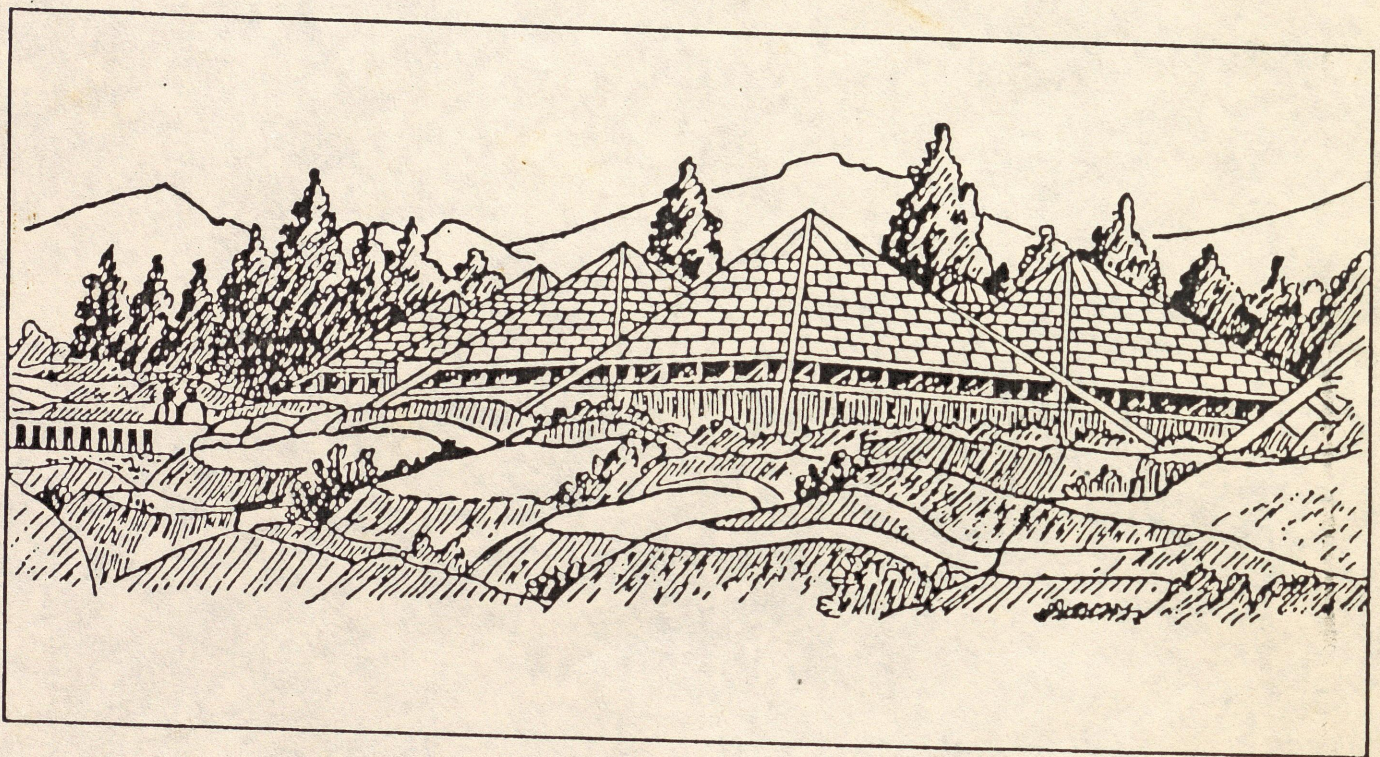


**FOUR WEEK TRAINING PROGRAMME
ON ZOO MANAGEMENT**

November 11, 1991 - December 6, 1991

COURSE CONTENT AND PROGRAMME



**WILDLIFE INSTITUTE OF INDIA
DEHRA DUN**

FOUR WEEK TRAINING PROGRAMME ON ZOO MANAGEMENT

NOVEMBER 11, 1991 - DECEMBER 6, 1991

AT

WILDLIFE INSTITUTE OF INDIA, DEHRA DUN

COURSE CONTENT AND PROGRAMME

11.11.91 (Monday)

| | | |
|--------------------|--|------------|
| 0830-1000 | Registration | |
| 1000 | Welcome address | J.H.Desai |
| | Keynote address | H.S.Panwar |
| 1130 to 1300 | Objectives and purpose of zoos. History of zoo movement in the world and in India. Types and categories of captive wildlife facilities in India | J.H.Desai |
| 1430 | Zoos of the world (A.V. Programme) (West Berlin, Frankfurt) | |

12.11.91 (Tuesday)

| | | |
|--------------------|--|--------------|
| 1000 | Zoo organisation, different supporting units and their function | Mohd Ahsan |
| 1100 | Sources and regulation for procurement of animals Settling in new arrivals and transfers including quarantine procedures and prophylactic medication Assessment and provision of the basic needs of animals | J.H.Desai |
| 1200 to 1300 | Wildlife (Protection) Act and its implications for zoos | V.B.Sawarkar |

Tea: 1045-1100hrs; Lunch: 1300-1430hrs; Tea: 1545-1600hrs. and Dinner: 2015hrs.
(valid for all working days except field trips and/or otherwise informed)

1430

World conservation strategy,
conventions and treaties

S.K.Mukherjee

1600

Zoos of the World (A.V. Programme)
(San Diego, Tuscon Arizona)

13.11.91 (Wednesday)

1000

Transportation of animals by road, rail, air, ship
formalities to be completed under the WP Act, CITES
design and fabrication of crates/cages for
different modes of transportation
cage design, size, material and
provisions to be made for different
group of mammals and birds

J.H.Desai

1100

Cage design, size, material and provisions to be
made for different groups of reptiles
Cage design, size, material and
provisions to be made for aquatic mammals
Crating, loading, care in transit
and release in enclosure

B.C.Choudhury

1200

to
1300

Safety and security of animals
precautions during cleaning of
enclosures, transfer and transport of animals
precautions against accidents,
natural and unnatural calamities
contingency plan in case of animal escape

Mohd Ahsan

1430

New concepts in zoo design - Bio Parks

S.M.Hasan

1600

Zoo keeper safety (A.V. Programme)

14.11.91 (Thursday)

1000

Animal restraint and capture techniques
manual/physical restraint methods
mechanical restraint methods

J.H.Desai

1100

Chemical restraint of animals
purpose of chemical restraint
equipment and delivery systems
physical and chemical properties of
various drugs

P.K.Malik

| | | |
|--------------------|---|--------------------------|
| 1200 to 1300 | Techniques of chemical restraint/ immobilisation of mammals, birds reptiles | |
| | Post capture care, life saving drugs & proccdures Procurement of equipment and drugs | S.Choudhury |
| 1430 | Practical demonstration of chemical restraint of animals | S.Choudhury P.K.Malik |

15.11.91 (Friday)

| | | |
|--------------------|---|------------------------|
| 1000 | Health care, types of diseases and treatment of zoo animals General health care (preventive measures and routine check up) Physical injuries Stress, trauma, poisons | C.J.Chandra |
| 1100 | Care and management of special collection Primates | J.H.Desai |
| 1200 to 1300 | Viral diseases Rinderpest Foot and mouth New castle/Ranikhet Arboviruses Feline enteritis | B.M.Arora P.K.Malik |
| 1430 | Presentation by participants | J.H.Desai |
| 1600 | Rhino reproduction Project (A.V. Programme) | |

18.11.91 (Monday)

| | | |
|--------------------|---|--------------|
| 1000 | Mycotic diseases Aspergillosis Coccidiomycosis Ringworm Dermatophytosis | P.K.Malik |
| 1100 | Parasitic infections Endoparasites Ectoparasites Deworming schedules | Vinod Sharma |
| 1200 to 1300 | Care and management of special collection Pachyderms, herbivores | J.H.Desai |

1430

Bacterial diseases
Tuberculosis
Anthrax
Tetanus
Pasteurellosis
Brucellosis
Leptospirosis
Paratyphoid
Fowl cholera
Gastroenteritis
Salmonellosis

L.N.Acharjyo

19.11.91 (Tuesday)

1000

Zoonotic diseases
Rabies
Scabies
Toxoplasmosis
Filariasis
Streptococcosis
Common cold
Hepatitis

Vinod Sharma

1100

Model veterinary unit
infrastructure facilities
staff requirement
record keeping
equipment

L.N.Acharjyo

1200
to
1300

Sanitation of enclosures/aviaries/
zoo hospital/commissary
Cleaning agents (mechanical, chemical)
Pest control
Upkeep and maintenance of public facilities

Vinod Sharma

1430

Diet and nutritional requirements of animals
Dietary requirement of different species/groups
Role of vitamins, mineral supplements
Quality and quantity of diet articles
Special diets (requirement & preparation)
Food preparation and distribution

L.N.Acharjyo

1600

Zoo keepers introduction to feeds
and feeding (A.V. Programme)

20.11.91 (Wednesday)

1000

Animal identification/marketing techniques
purpose and methods (ear notch,
ear tags, collars, tattoo, dyes,
bands, clips)

Sally Walker

- 1100 Maintenance of records
 records of daily observations
 animal inventory
 individual history cards
 index card system
 utilisation of records for
 documentation and research
 J.H.Desai
- 1200 Care and management of carnivores
 S.K.Patnaik
- 1430 Maintenance of studbooks of endangered species
 use of computers
 cooperation with national agencies
 database at WII, Central Authority
 for zoos cooperation with
 International agencies I.U.C.N.,
 I.S.I.S., S.S.P., I.U.D.Z.G., A.A.Z.P.A.
 Sally Walker
- 1600 Zoo resource room assignment
 Hands on computer

21.11.91 (Thursday)

- 1000 Reproductive physiology of different species
 reprod. cycle
 gestation periods
 age of sexual maturity
 N.P.S.Chauhan
- 1100 Breeding endangered species in captivity
 selection of species
 assessment and provision for the
 basic needs of species (space, diet,
 health care)
 establishing proper group size
 and composition
 B.C.Choudhury
- 1200 Artificial rearing, milk substitutes
 J.H.Desai
 to
 1300
- 1430 Rhino rehabilitation Project at the
 Dudhwa National Park (A.V.Programme)
- 1600 Presentation by participants

22.11.91 (Friday)

- 1000 Planning captive breeding programmes
 B.C.Choudhury

| | | |
|------|--|----------------------------|
| 1100 | Small population management captive population genetics population viability analysis | Sally Walker |
| 1200 | Techniques of selective breeding artificial insemination embryo transfer frozen gametes controlled breeding of common species | N.P.S.Chauhan |
| 1430 | Presentation of some selective captive breeding programmes within and outside the county | J.H.Desai B.C.Choudhury |
| 1600 | Closer to closer (A.V. Programme) | |

23.11.91 to 29.11.91 (Saturday - Friday)

Study tour to Allen Forest Zoological Park, Kanpur,
Kukrail and Prince of Wales Zoological Garden, Lucknow

2.12.91 (Monday)

| | | |
|--------------------|--|--------------|
| 1000 | Education and interpretation role of interpretation and conservation education basic communication skills and methods | R.N.Acharya |
| 1100 | Strategies for developing educational activities and programmes Interaction with educational institutions, NGOs | Sally Walker |
| 1200 to 1300 | Developing A.V. Programmes, outdoor nature activities and special activities | |
| 1430 | Interpretive techniques signage publications information/visitor center training zoo guides and interpretive personnel case studies Delhi and Hyderabad | A.K.Malhotra |
| 1600 | Zoo resource room assignment survey of brochures, guide book, from different zoos of the world. Each participant to prepare a brochure/guide map of his/her own zoo. | |

3.12.91 (Tuesday)

- 1000 Model interpretive/education unit
staff, equipment,
infrastructure requirement J.H.Desai
- 1100 Mass communication
press, electronics media,
preparation of publicity
material, public relations Sally Walker
- 1200 Exhibit presentation
selection of theme for display
display requirements
enclosure space
requirement of different species graphics
use of props/plants/inanimate objects Pushp Kumar
- 1430 Visit to Malsi Deer Park
to (open forum on Deer Parks as
1700 extension of zoological parks) Pushp Kumar

4.12.91 (Wednesday)

- 1000 Care and management of parrot and
parrot like birds J.H.Desai
- 1100 Care and management of reptiles
and aquatic mammals B.C.Choudhury
- 1200 Care and management of pheasants S.Pandey
to
- 1300
- 1430 Visit to U.P. Hatcheries, Manduwala

5.12.91 (Thursday)

- 1000 Research in zoos
aims and objectives
nature of research (need based,
pure, applied)
fields of research (animal
health, nutrition, reprod.
biology, genetics, husbandry,
physiology, behaviour,
conservation education J.H.Desai

1100 Research Planning and scientific report writing
 Objectives
 Review of literature
 Formulation of research project
 Data collection
 Analysis of data
 Presentation of data
 Discussion of results
 Developing a hypothesis
 Dissemination of scientific information Ajith Kumar

1200 Exhibit presentation
to signage and labelling of exhibits
1300 special exhibits maintenance J.H.Desai

1430 Research methods of studying
 animal behaviour (A.V.Programme)

1600 Zoo resource room assignment
 each participant will develop/
 design a signage for a zoo
 animal of their choice

6.12.91 (Friday)

1000 Training programme assessment
 and evaluation by the participants

1130 Presentation of certificates
to Conclusion of training programme.
1300