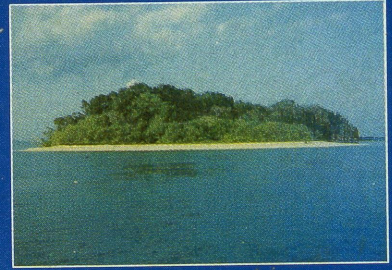


MARINE NATIONAL PARK, WANDOOR

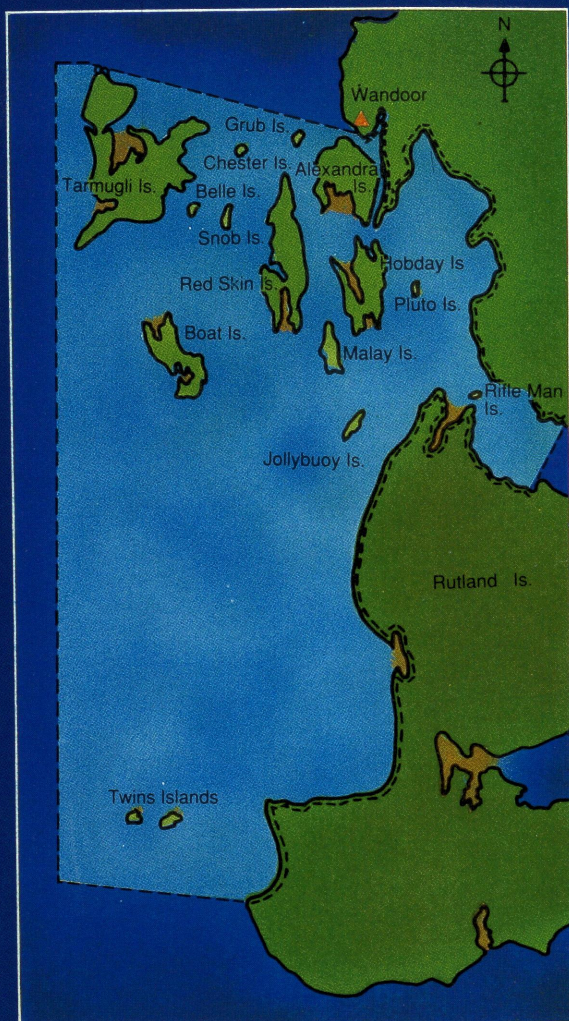


(Andaman & Nicobar Islands)



General Information

- * Area of the Park - 281.5 sq km
- * Distance by road from Port Blair - 29 km
- * Islands open for tourists - Redskin & Jollybuoy
- * Best season for visiting - October to May



Marine National Park, Wandoor

Mangrove Swamp

Islands in the Park



Location

The Marine National Park, Wandoor, is situated in the Bay of Bengal, on the south-south west coast of the main South Andaman Island, about 29 km from Port Blair, the capital city of Andaman & Nicobar Islands.

This Marine National Park is made up of open sea, creeks and fifteen small and large islands.

How to get there

The Park is accessible by road from Port Blair. State transport/private buses ply regularly from Port Blair to Wandoor, the Park's headquarter.

The tourism department of the A & N administration provides transport facilities to reach the Park.

Private travel agencies offer conducted tours to the park from Port Blair.

Where to stay

A forest rest house having four suits is available at Wandoor.

It is advisable to stay at Port Blair, where various categories of hotels and government guest-houses are available.

Excursions

Obtain entry permit at Wandoor and then take the boats of the Marine Department or private tourist agencies. Corals and underwater marine life can be seen by using glass-bottom boats (the main boats have glass-bottom 'boats') or by snorkelling.

■ Entry Fee

	Indian	Non-Indian
Adult	- Rs. 1-00	Rs. 2-00
Child	- Rs. 0.50	Rs. 1-00

■ Boat Fare

For trip from Wandoor to Jollybuoy/Redskin Island:

	Indian	Non-Indian
Adult	- Rs. 35-00	Rs. 100-00
Child	- Rs. 15-00	Rs. 50-00

The boat fare includes the facility of a glass-bottom boat.



Jollybuoy Island

What to see

- Mangrove forest along the creeks and magnificent tropical forest on the islands.
- Coral reefs, exotic varieties of beautifully coloured coral fishes and other marine life through the glass-bottom boat.



Underwater world

Important Marine Fauna

This National Park provides an opportunity to experience the fascinating world of tropical forest and coral reefs. The sandy beaches and crystal clear water offer excellent recreational facilities.

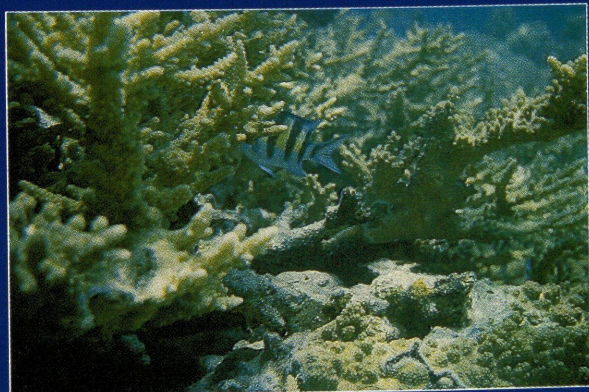
The Park provides a rich and varied habitat for marine animals. These range from the smallest, the zoo-planktons, to the large sea mammals like dolphins. Some important marine animals are:

Corals

The fringing type of coral reefs growing around the islands attract not only tourists but also scientists and researchers. More than 50 types of corals are found here. The coral reefs look like a forest growing in the sea.

Some important coral varieties are:

Acropora, *Pocillopora*, *Montipora*, *Leptoseris*, *Fungia*, *Porites*, *Tubipora* and *Gorgonians*.



Acropora (Staghorn coral)



Tropical Forest

Land Fauna

- Mammals : Andaman Wild Pig, Spotted Deer, Civet, Fruit Bat
- Birds : Andaman Teal, Whistling Teal, White Bellied Sea Eagle, Andaman Serpent Eagle, Kingfishers, Terns, Waders, Reef Heron, Swifts, Parakeets, Lorikeet, Pigeons, Doves.
- Reptiles : Krait, Cobra, King Cobra, Vine Snake.

Flora of the Park

The important plant species are *Dipterocarpus* Spp., Andaman Padauk, Andaman Bullet-Wood, *Terminalia* Spp., Silk Cotton Tree, *Thespesia*, *Pandanas*, *Cycas*. Bamboos, Canes, Orchids and Ferns.

Main mangrove species are *Rhizophora*, *Bruguiera*, *Avicennia*, and *Heritiera*.



Tourists at Redskin Island

Do's

- Treat the Park with respect as it is a sanctum sanctorum of our precious natural heritage.
- Make use of the services of tourist guides.
- Learn more about coral reefs, other marine life and tropical forests. This will make your visit more enjoyable.
- Help us to keep the Park clean. Always bring back litter.
- Take care of the Reef, not just for yourself, but for all who follow.
- Give your valuable comments and observations for ensuring better Park management.

Don'ts

- Do not enter the Park without permit.
- Do not collect, destroy or remove any living or dead animal/plant.
- Do not collect dead coral or break live coral. Please do not stand on the coral reef while snorkelling.
- Do not take video or film without permit.

For more Information

Write or contact:

- (i) D.C.F. (Wild Life), Haddo, (Mini Zoo), Port Blair - 744 102. Phone: 20816.
- (ii) Chief Wildlife Warden, A. & N. Islands, Haddo/Port Blair - 744102. Phone: 21549.

Design and Illustrations: Mukesh Acharya
Photos: Shri Ram Het, Ajai Saxena, Romulus Whitaker
Published by the Wildlife Wing, A. & N. Forest Dept.
Produced by the Centre for Environment Education,
Ahmedabad, Gujarat

GALATHEA NATIONAL PARK



This National Park comprises the core area of the southern part of Biosphere Reserve in Great Nicobar Island and consists of lowland forests which has the greatest abundance of endemic avifauna. It is the prime nesting habitat of the Nicobar Megapode and possibly the area of other endemic species too.

Basic information :

Area of the National Park -	110 Sq. Km.
Distance from Port Blair -	432 Km.
Best season for visiting -	November to April

How to reach :

The National Park is accessible by ship which plies regularly every 7-10 days from Port Blair to Campbell Bay in Great Nicobar Island.

Accommodation :

There is a PWD Guest House with adequate accommodation and one is advised to do advance booking at Port Blair/Campbell Bay for the same.

Excursions :

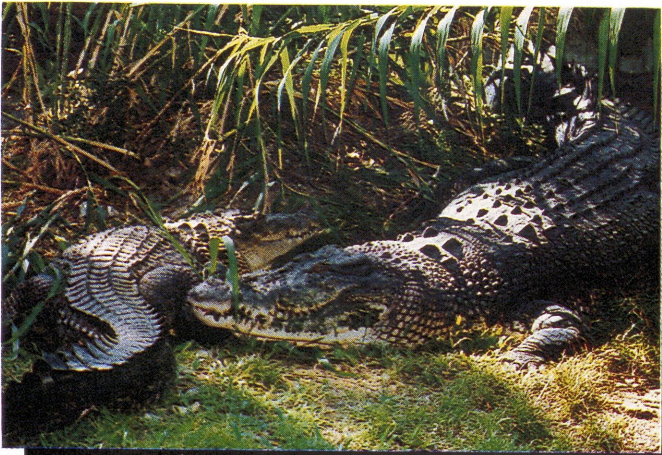
Entry permit is required and is available at Campbell Bay from where one can visit South Bay (Giant Leather Back Turtle nesting ground) and to Indira Point - the southern most point in India.

Important flora :

It is endowed with the largest uninhabited low lying forests containing some of the rare and endangered plants with rich species content, and is also a rich resource of genetic germplasm.



Giant Leatherback Turtle Nesting



Salt Water Crocodile

Important fauna :
Crab Eating Macaque :

This Macaque (*Macaca fascicularis*) is an inhabitant of tropical rain forests and is arboreal in habit. It is said to take/eat crabs as its food.

Salt Water Crocodile :

The Salt Water Crocodile (*Crocodylus porosus*) is the largest of all nesting crocodiles. It is well adapted to semi-aquatic mode of life and is typically associated with brackish waters, coastal mangrove swamps etc. The mouth of the Galathea river has an abundance of this sluggish and lethargic creature.

Leather Back Turtle :

This turtle (*Dermochelys coriacea*) is the largest of all the living turtles in the world. It nests in large numbers during the month of December to February at South Bay.

Other important fauna :

- | | | |
|----------|---|--|
| Mammals | - | Andaman Wild Pig, Palm Civet, Fruit Bat. |
| Birds | - | Nicobar Pigeon, White Bellied Sea Eagle, Nicobar Serpent Eagle, Parakeets, Nicobar Megapode. |
| Reptiles | - | Water Monitor Lizard, Reticulated Python. |



Pandanus Tree

For more information : Write or contact :

1. The Chief Wildlife Warden,
Andaman & Nicobar Islands,
Van Sadan, Haddo P. O.,
Port Blair - 744 102 (INDIA),
(Phone : 03192-21549)
2. The Asstt. Conservator of Forests,
Wildlife Division,
Campbell Bay P.O.
Great Nicobar, Andaman & Nicobar Islands (INDIA)

Design and Illustration : Richard D'Souza

Photo by : Biswajit Dutta

Published by : Wildlife Circle, A & N Forests Department

Shompens :

The forest of Great Nicobar are home to a semi-nomadic monogamic aboriginal tribe with mongoloid features-called the Shompens. They are now believed to number about 300 and live in groups moving from place to place in the forest of the Central uplands. Their home, their food, their medicine etc. are all from within the forests

Do's :

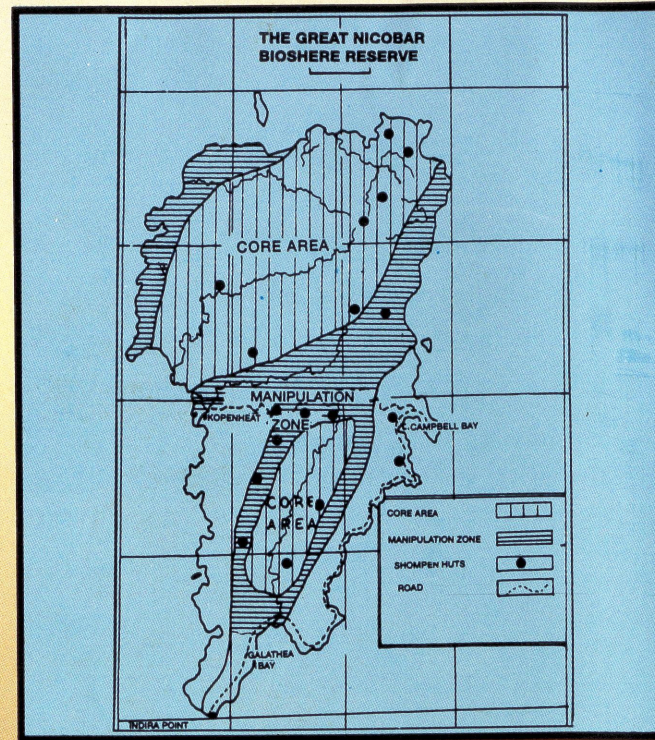
- Help to keep the Biosphere Reserve clean.
- To make your visit move enjoyable, learn more about tropical forests and the flora and fauna.
- Your valuable comments and observations will ensure better management.
- Leave nothing but your foot prints.

Don'ts :

- Do not enter the Biosphere Reserve without permit.
- Do not collect/destroy or remove any living or dead animal/plant.
- Do not take video or film without permit.
- Shompen areas are out of bounds.



A Shompen Hut



For more details : Write or contact :

The Chief Wildlife Warden,
Andaman & Nicobar Islands,
Van Sadan, Haddo P. O.,
Port Blair - 744 102 (INDIA),
(Phone : 03192-21549)

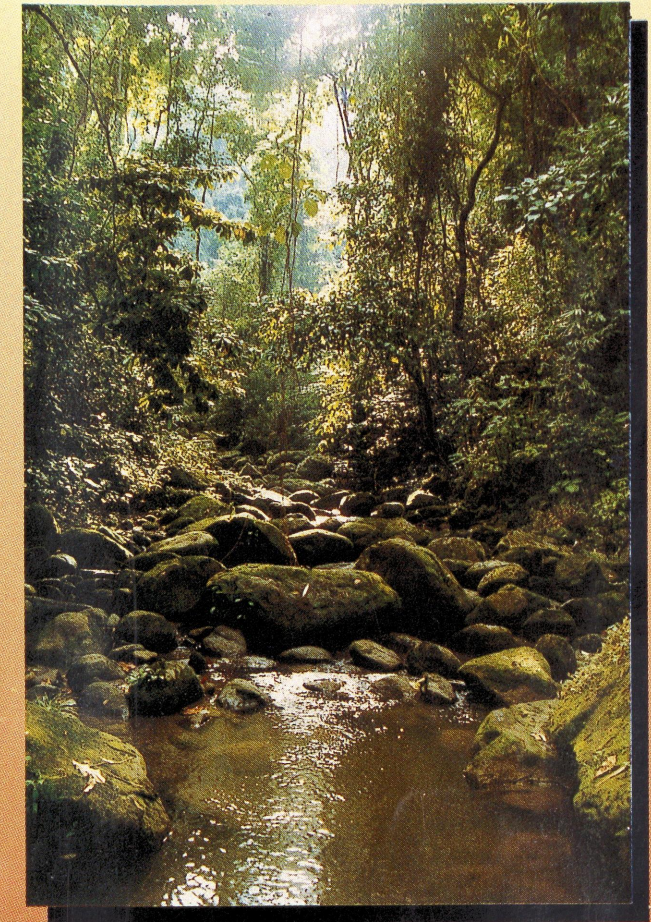
The Asstt. Conservator of Forests,
Wildlife Division,
Campbell Bay P.O.
Great Nicobar, Andaman & Nicobar Islands (INDIA)

Design and Illustration : Richard D'Souza

Photos : Biswajit Dutta

Published by : The Wildlife Circle, A & N Forest Department.

GREAT NICOBAR BIOSPHERE RESERVE



This Biosphere Reserve is situated in Great Nicobar Island which is the southernmost landmass of India and is covered by contiguous undisturbed primary forests which are still virgin and rich in species content.

General information :

Area of the Biosphere Reserve - 885 Sq. Km.
Distance from Port Blair - 482 Km.
Best season for visiting - November to April

How to reach :

The Biosphere Reserve is accessible by ship which plys every 7-10 days from port Blair to Campbell Bay (Great Nicobar).

Accommodation :

There is a PWD Guest House with adequate accommodation and one is advised to do advance booking at Port Blair or Campbell Bay for the same.

Excursions :

Entry permit is available at Campbell Bay from where one can visit Laful in the North, Kopenheat in the East and Indira Point (The southernmost point in India) in the South.



The Galathea River



An Endemic Orchid

Important flora :

Endowed with immense genetic resources of wild plant species, fruit trees, medicinal plants etc, the Biosphere Reserve harbours rich genetic germplasm resources. About 14% of the vascular flora is rare and endemic. 30 species of plants are rare among the known flora which are endangered and confined to a few pockets on this island.

The characteristic tree fern *Cyathea albosetacea* and the beautiful ornamental orchid *Phalaenopsis speciosa* are found only in this Island.

Important fauna :

The Biosphere Reserve provides a unique opportunity to experience the fascinating world of tropical forests, endemic birds and coral reefs.

Some of the animals are :

Megapode :

The Nicobar Megapode (*Megapodius freycinet nicobariensis*) one of the rare, endemic and endangered bird is found only on this island. It is a mound building bird and the young ones hatch on its own with the heat generated due to humus. It is also known as the thermometer bird.

Swiftlets :

The edible nest Swiftlets (*Colocalia fuciphaga*) that builds nest entirely out of saliva and ranks among the worlds most expensive animal product is a critically threatened species. These nests, besides being an important item in the Chinese cuisine and pharmacy, are believed to have both aphrodisiac and medicinal property.

Nicobar Python :

The Reticulated Python (*Python reticulatus*) is an endangered species and is found only in this Island. It is threatened because of the great demand for its skin. It is the longest known Python, measuring up to 10 mtrs. and can swallow animals like deer & wild pig.

OTHER IMPORTANT FAUNA :

- Mammals : CRAB EATING MACAQUE, ANDAMAN WILD PIG, PALM CIVET, FRUIT BATS.
Birds : WHITE BELLIED SEA EAGLE, PARAKEETS, NICOBAR SERPENT EAGLE, NICOBAR PIGEON.
Reptiles : SALT WATER CROCODILE, MALAYAN BOX TURTLE, WATER MONITOR LIZARD.
Other : GIANT ROBBER CRAB.



Megapode Building