



BPR - 9/3/93

55 79 01 M H H-1 2



Sasha putting "bugle" in

BPR 9/3/93

55 79 01 N H H-1.2



Nea Seawater 3/93

SS 79 01 M H M H 2



near SUNDARI

3/93

55 83 01 M H M H 2



Captain Cherkara at
Mehayark

Large
office

3/95



Vultures at a big carcass
near Shava - Doh East House, Rollin
3/93



Poached tree

en route Shontkya - Nesirobad

8/3/93

SS 79 01 H 44 1 2



Omara Goshij
Jodhpur 200

3/93

ES 83 01 MH H 3 2



Jain Temple Instrument

3/93

SS 80 01 H H N-1.2

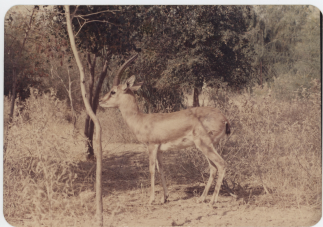


Disused

India Mines - Shankhaya

3/93

SS 79 01 M H H 12



Captain Clark of
Moberg's Large Office

3/93

55 83 01 M H H N 2



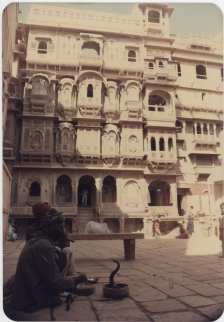
Indri Jadhav Carol
from Maharashtra F.R.A. Swidge.

SS 83.01 NH+1-2



Chintan up "Jagan" - Baran

2/93



MAIN HAVEN
JASERVA

2/93

SS 82 01 N N 1 N 2



Savari - 2/93

SS 80 01 MH 1 N 2



DANNI - 2/93

SS 81 01 NN 1-1-2



Velavada

2/93

SS 81 01 MH 1-1.2



SAN DIEGO

3/93

55 83 01 N H N 1 2



Keen Say la - Sawashka

2/93

55 81 01 MM 1-1 2



Old Tubal wells Banni

2/2

SS 90 01 M N 1-1-2



Banni 2/93

55 80 01 M H 1-1-2



New Natija 2/93

55 81 01 M H H H 2



NASIRABAD - FLAYING AREA

8/3/92

55 79 01 N H N-1 2



Down a side street
Jarebur. 2/93

SS 82'01 N H 1 N 2



Setween Blawan & Shorkhitaja

Rajartha

3/93



SUDSKI CHASKI

3/93



NASIRABAD (Asmer Dist)

Playj area

8/3/93



Nea Natya

7-2/93

55 81 01 NH 1-1-2



Canal Indus. NIMBAA VILAGE
3km (approx) SUDASRI -

28 / 2/93



Raven

near Shava Dow - Podlyna

3/92



Calf pen - bet near
Kotekawa & Nabuya 2/83



Weeds in the Moha Faralli
Canal
Moha Faralli -

3/93

2 14111 10 28 55



Bara

2/93

55 80 01 NH 1-1-2