



**GREAT SPIRAL NEBULA IN ANDROM-  
EDA** • Known also as Messier 31, this  
galaxy of billions of stars is  $1\frac{1}{2}$  million  
light years away.

Original photograph courtesy of Lick Observatory,  
University of California.

Reproduction furnished by Morrison Planetarium,  
California Academy of Sciences, San Francisco.



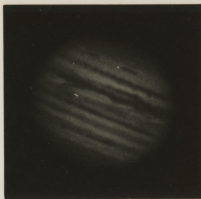
**MOUNTAINS ON THE MOON · Enlarge-  
ment showing the Apennine Range and  
craters.**

Original photograph courtesy of Lick Observatory,  
University of California.

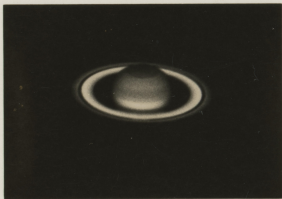
Reproduction furnished by Morrison Planetarium,  
California Academy of Sciences, San Francisco.



MARS



JUPITER

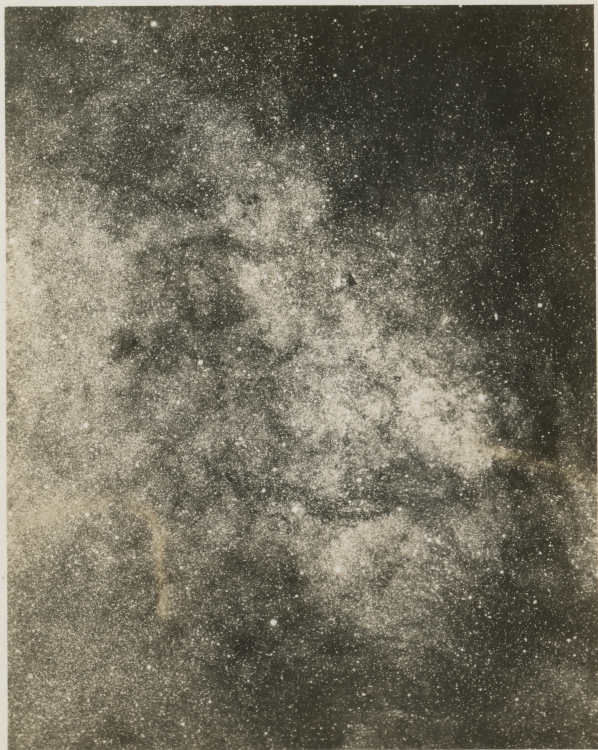


SATURN

**PHOTOGRAPHS OF PLANETS · Enlarge-  
ments from negatives taken with the  
36 inch refractor.**

Original photograph courtesy of Lick Observatory,  
University of California.

Reproduction furnished by Morrison Planetarium,  
California Academy of Sciences, San Francisco.



**STAR CLOUDS IN THE MILKY WAY**  
Photograph of the Sagittarius region  
taken with the 20 inch astrograph.

Original photograph courtesy of Lick Observatory,  
University of California.

Reproduction furnished by Morrison Planetarium,  
California Academy of Sciences, San Francisco.



**HALLEY'S COMET · Photographs**  
taken on May 6 & 7, 1910. The tail was  
then about 75 million miles long.

Original photograph courtesy of Lick Observatory,  
University of California.

Reproduction furnished by Morrison Planetarium,  
California Academy of Sciences, San Francisco.



**GLOBULAR STAR CLUSTER · Messier 13,**  
in Hercules; this group of stars is 34,000  
light years away.

Original photograph courtesy of Lick Observatory,  
University of California.

Reproduction furnished by Morrison Planetarium,  
California Academy of Sciences, San Francisco.



**THE SUN'S CORONA · Photographed  
during the total eclipse of September 22,  
1922, from Wallal, Australia, by the Wm.  
H. Crocker Expedition.**

Original photograph courtesy of Lick Observatory,  
University of California.

Reproduction furnished by Morrison Planetarium,  
California Academy of Sciences, San Francisco.



**RING NEBULA IN LYRA** · This expanding shell of rarified gas around a very hot star is thousands of times larger than the solar system.

Original photograph courtesy of Lick Observatory,  
University of California.

Reproduction furnished by Morrison Planetarium,  
California Academy of Sciences, San Francisco.



**GREAT NEBULA IN ORION** · This can be seen faintly with the unaided eye as a fuzzy spot of light in the sword of Orion.

Original photograph courtesy of Lick Observatory,  
University of California.

Reproduction furnished by Morrison Planetarium,  
California Academy of Sciences, San Francisco.