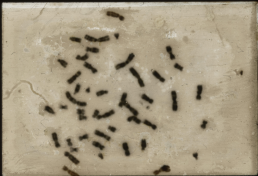
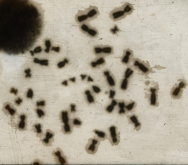
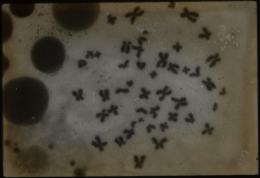


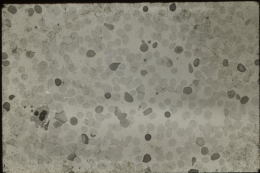
Handwritten text in a cursive script, likely a letter or document. The text is written in dark ink on a light-colored background. The handwriting is dense and fills most of the page. The text is written in a cursive script, likely a letter or document. The text is written in dark ink on a light-colored background. The handwriting is dense and fills most of the page. The text is written in a cursive script, likely a letter or document. The text is written in dark ink on a light-colored background. The handwriting is dense and fills most of the page.

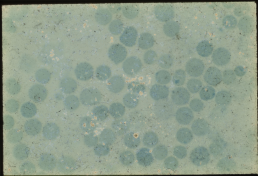


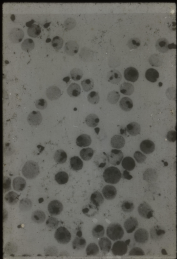


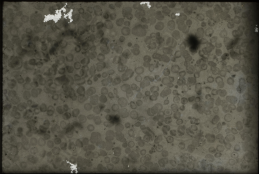
Handwritten text in a cursive script, possibly a form or document, with several lines of text. The text is written in dark ink on a light-colored, aged paper. The characters are somewhat stylized and difficult to decipher due to the cursive nature and the image quality. The text appears to be organized into several lines, with some characters that might be recognizable as 'L' or 'I' in a Western script, but the overall meaning is illegible.

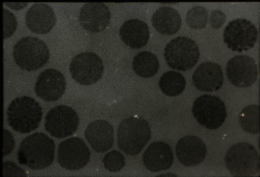




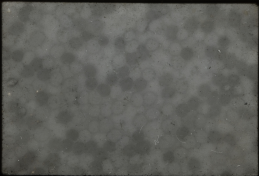


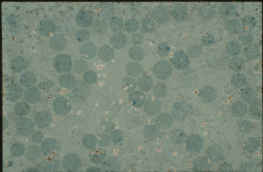


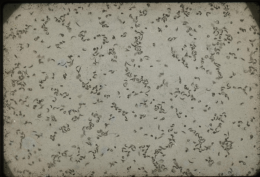


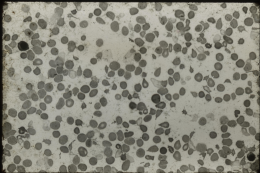


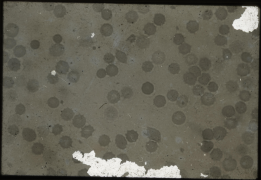


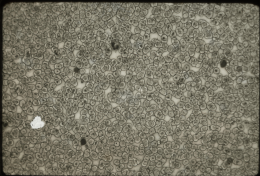


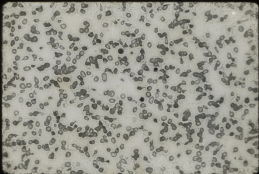


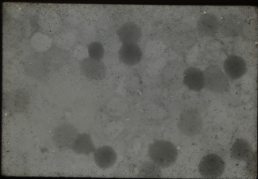










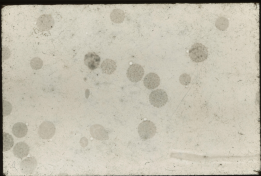


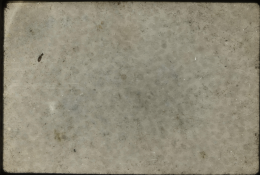
志

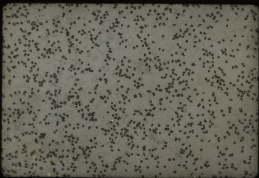


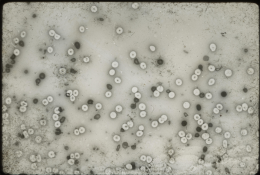
Hb. O from India
(KKL)

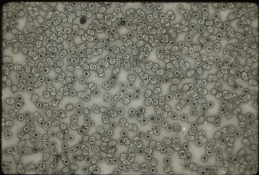
$\alpha^O Tp IX$
Trace of $\alpha^A Tp IX$
 $\alpha^O Tp VII-IX$
superimposed
on $\alpha^A Tp I-II$
 $\alpha^A Tp VII-IX$

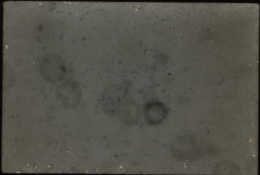


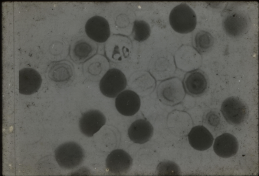


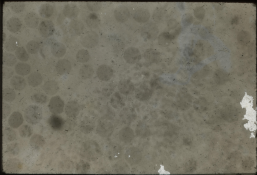


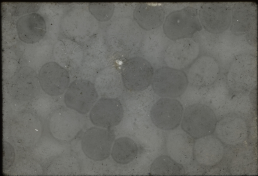


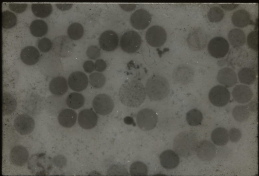


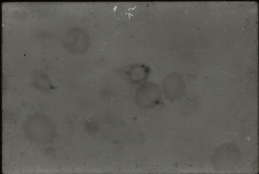


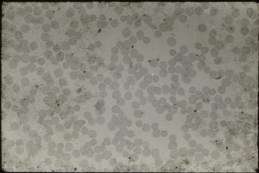


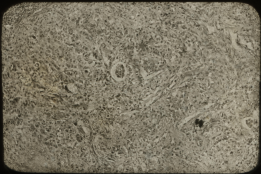


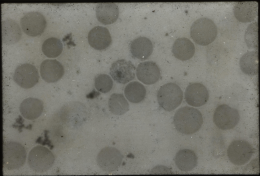


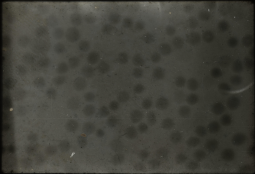












Hb. Hofu

β 126 (H4) Val. - Glu.

β Tr XIII
missing

H₂ β Tr XIII

α Tr IV

— ← pH 6.4 → —

